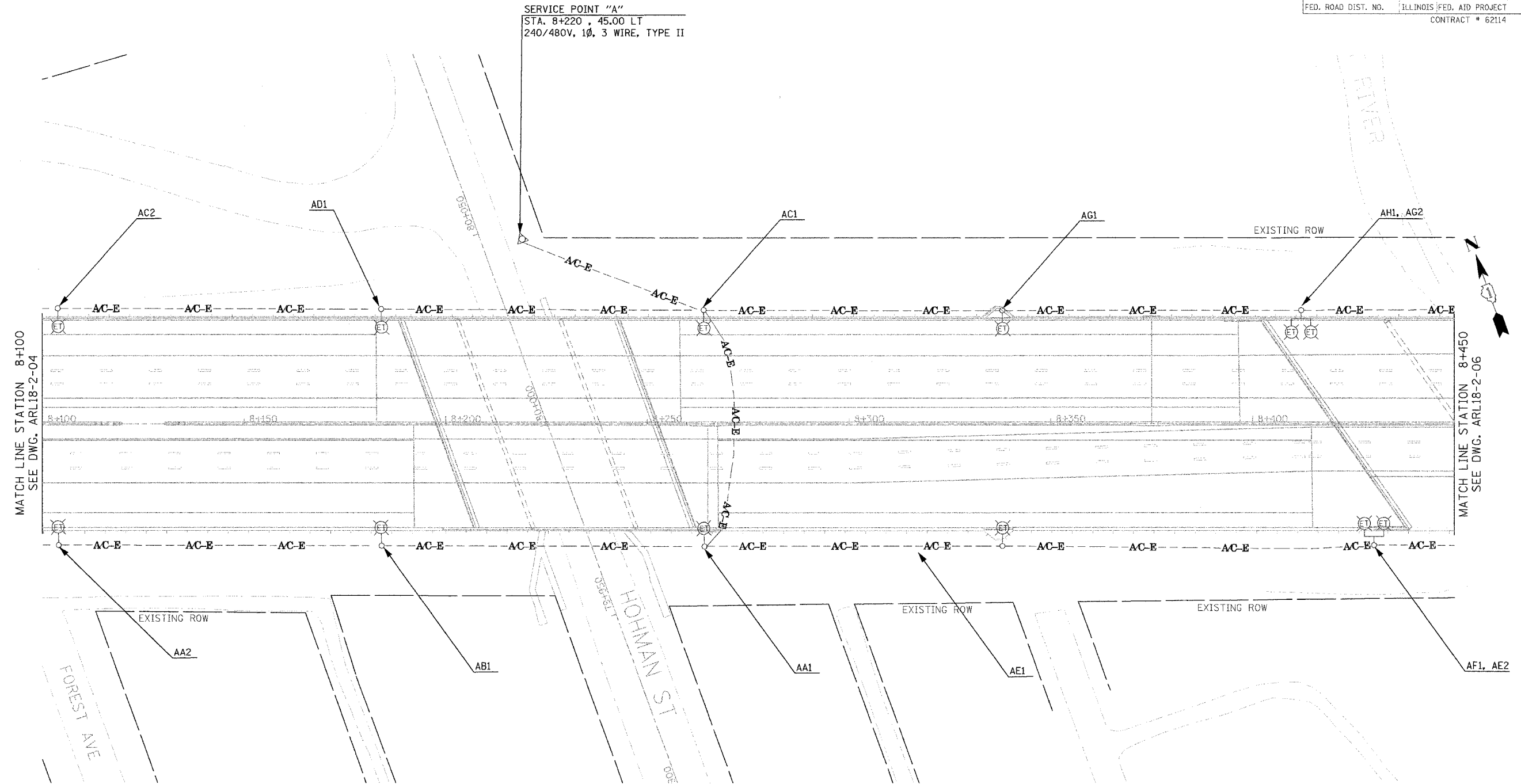


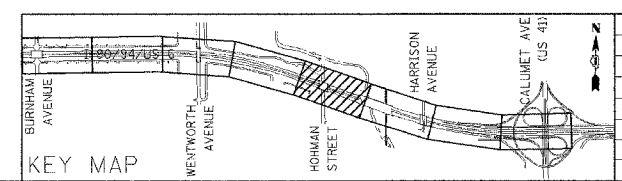
F.A.I. RTE.	SECTION	COUNTY	TOTAL SHEETS	SHEET NO.
60/94	2003-0891	COOK	1207	456
STA.	TO STA.			
FED. ROAD DIST. NO.	ILLINOIS	FED. AID PROJECT	CONTRACT # 62114	



MATCH LINE STATION 8+100
SEE DWG. ARL18-2-04

MATCH LINE STATION 8+450
SEE DWG. ARL18-2-06

NOTE:
INSTALLATION OF TEMPORARY LIGHT POLE UNITS,
AND AERIAL CABLE ON NORTHSIDE IN INDIANA
SHALL BE COORDINATED WITH CONTRACT 62664.



REVISIONS	
NAME	DATE

ARL18-2-05

ILLINOIS DEPARTMENT OF TRANSPORTATION
I-80/94/US 6
KINGERY-BORMAN EXPRESSWAY
BURNHAM ROAD TO US 41
EXISTING LIGHTING PLAN
I-80 /94 /US-6
STA. 8 + 100 TO STA. 8 + 450

SCALE 1:500
DATE 07/18/05

DRAWN BY EA0/BC
CHECKED BY PKG/BC

GO
GANDHI AND ASSOCIATES, INC.
ENGINEERS AND PLANNERS
800 N. WESTFIELD ROAD
SUITE 200
CHICAGO, ILLINOIS 60653 TEL: 312/774-5980

4/24/04
6/24/04
7/24/04