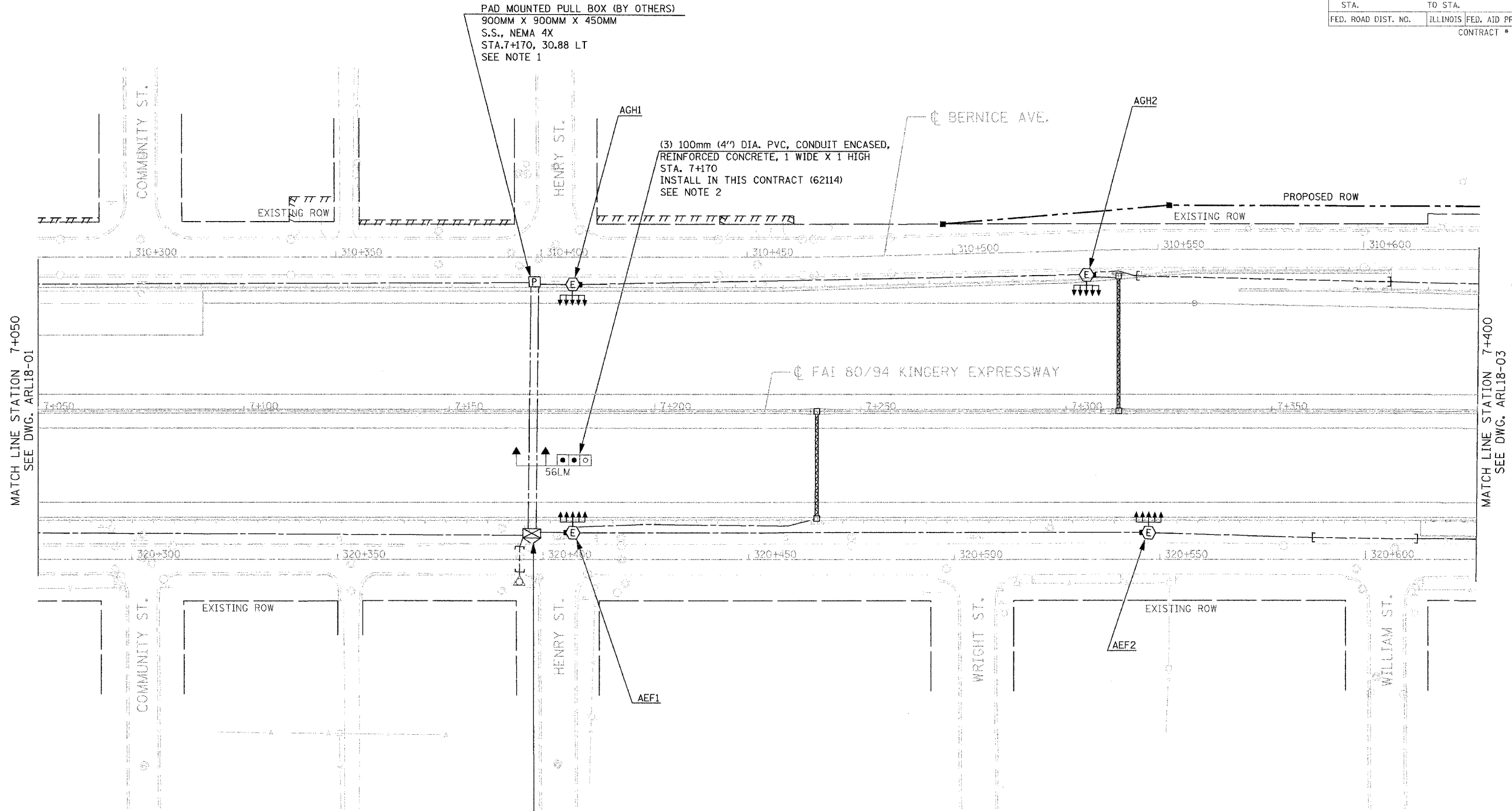


F.A.I. RTE.	SECTION	COUNTY	TOTAL SHEETS	SHEET NO.
80/94	2003-0891	COOK	1207	463
STA.		TO STA.		
FED. ROAD DIST. NO.		ILLINOIS FED. AID PROJECT		
CONTRACT # 62114				



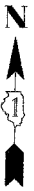
PAD MOUNTED PULL BOX (BY OTHERS)  
 900MM X 900MM X 450MM  
 S.S., NEMA 4X  
 STA. 7+170, 30.88 LT  
 SEE NOTE 1

(3) 100mm (4") DIA. PVC, CONDUIT ENCASED,  
 REINFORCED CONCRETE, 1 WIDE X 1 HIGH  
 STA. 7+170  
 INSTALL IN THIS CONTRACT (62114)  
 SEE NOTE 2

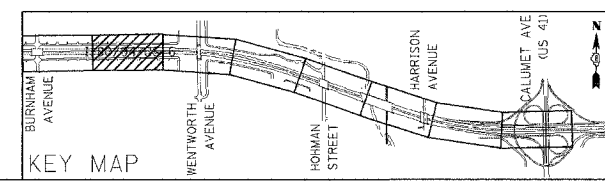
LIGHTING CONTROLLER "A" (BY OTHERS)  
 STA. 7+170, 29.5 RT  
 RADIO CONTROL WITH SCADA  
 240/480V, 1Ø, 3 WIRE

MATCH LINE STATION 7+050  
SEE DWG. ARL18-01

MATCH LINE STATION 7+400  
SEE DWG. ARL18-03



- NOTES:
- FOR PAD MOUNTED PULL BOX DETAIL, SEE DRAWING MED18-2.
  - REVIEW M.O.T. PLANS FOR STAGING TO INSTALL CONDUITS.
  - ALL LIGHTING WORK SHOWN HERE UNLESS NOTED OTHERWISE IS DONE BY OTHERS AND FOR COORDINATION BETWEEN THE CONTRACTORS.



REVISIONS	
NAME	DATE

**ARL18-02**

**ILLINOIS DEPARTMENT OF TRANSPORTATION**  
 I-80/94/US 6  
 KINGERY-BORMAN EXPRESSWAY  
 BURNHAM ROAD TO US 41  
**PROPOSED ROADWAY LIGHTING**  
 I-80 /94 /US-6  
**STA. 7+050 TO STA. 7+400**

SCALE 1:500      DRAWN BY EAO/BC  
 DATE 07/18/05      CHECKED BY PKG/BC

GANDHI AND ASSOCIATES, INC.  
 ENGINEERS AND PLANNERS  
 8335 N. WESTWIND HIGHWAY  
 SUITE 206  
 CHICAGO, ILLINOIS 60648-1111 (773)714-5900

#12:ES  
 #40:TE:4  
 #13:ME:4