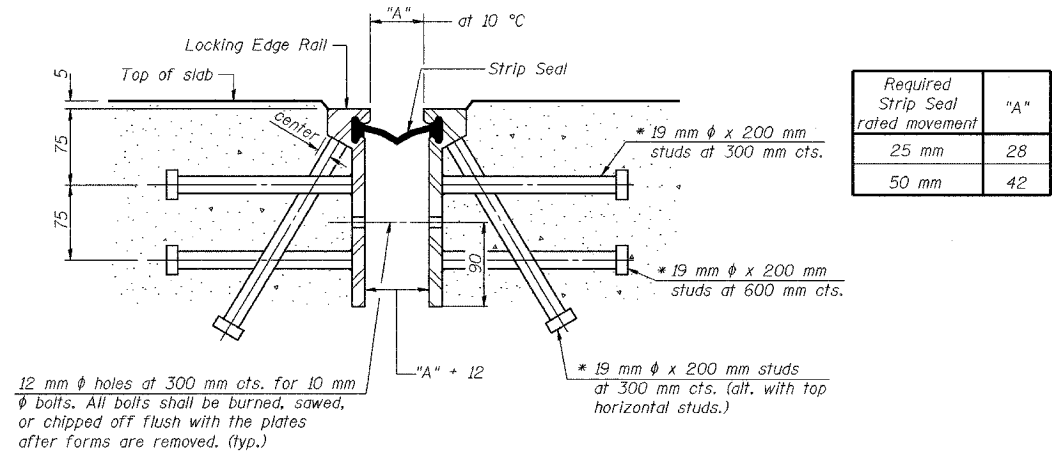
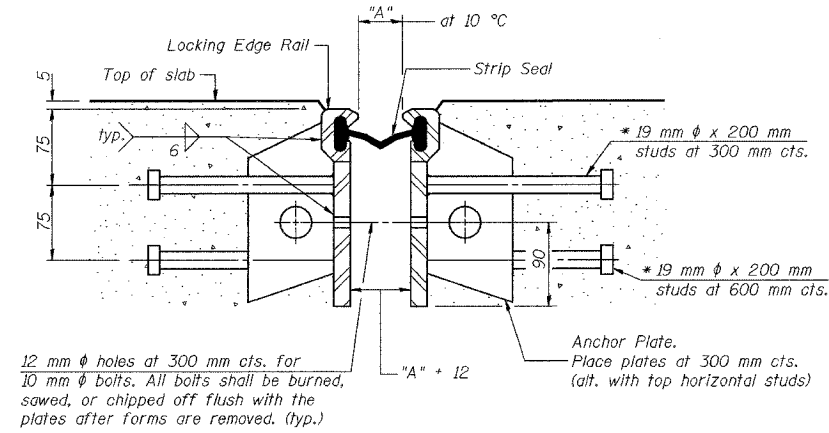


ROUTE NO.	SECTION	COUNTY	SHEET	SHEET	SHEET NO. S-13 35 SHEETS
F.A.I. 88/74	ENGLIS	COOK	1207	557	
DRAWN BY: [blank] PROJ. NO. PROJECT: C-10-88-01					CONTRACT No. 62114

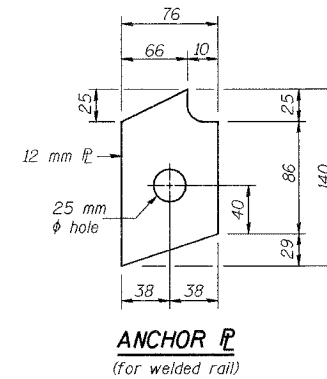
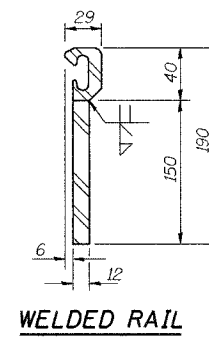
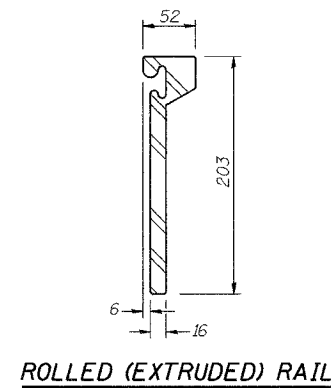


**SECTION THRU ROLLED RAIL EXP. JOINT**  
(852 Studs Required)

\* Granular or solid flux filled headed studs conforming to Article 1006.32 of the Std. Specs., automatically end welded.



**SECTION THRU WELDED RAIL EXP. JOINT**  
(516 Studs Required)  
(332 Anchor Plates Required)



**LOCKING EDGE RAILS**

**GENERAL NOTES**

The strip seal shall be made continuous and shall have a minimum thickness of 6 mm. The configuration of the strip seal shall match the configuration of the Locking Edge Rails.

The height and thickness of the Locking Edge Rails shown are minimum dimensions. The actual configuration of the Locking Edge Rails and matching strip seal may vary from manufacturer to manufacturer. Flanged edge rails will not be allowed.

Locking Edge Rails may be spliced at slope discontinuities and stage construction joints.

The manufacturer's recommended installation methods shall be followed.

The joint opening and deck dimensions detailed on the superstructure are based on a preformed joint seal. If the contractor elects to use the alternate strip seal joint, the opening and deck dimensions shall be modified according to the dimensions detailed on this sheet. Required modifications shall be made at no additional cost to the State.

All dimensions are in millimeters (mm) except as noted.

DESIGNED	BPS
CHECKED	JDG
DRAWN	MJB
CHECKED	JDG

ILLINOIS DEPARTMENT OF TRANSPORTATION  
 F.A.I. ROUTE 80/94 (KINGERY EXPRESSWAY)  
 UNDER WENTWORTH AVE  
**BRIDGE JOINT SYSTEM - EXPANSION**  
 (ALTERNATE STRIP SEAL)  
 SECTION 2626.1B  
 COOK COUNTY  
 STATION 7 + 579.488  
 STRUCTURE NO. 016-2790  
 DATE 07/05 (Sheet 2 of 2)

**AMERICAN**  
CONSULTING ENGINEERS

FOR INFORMATION ONLY