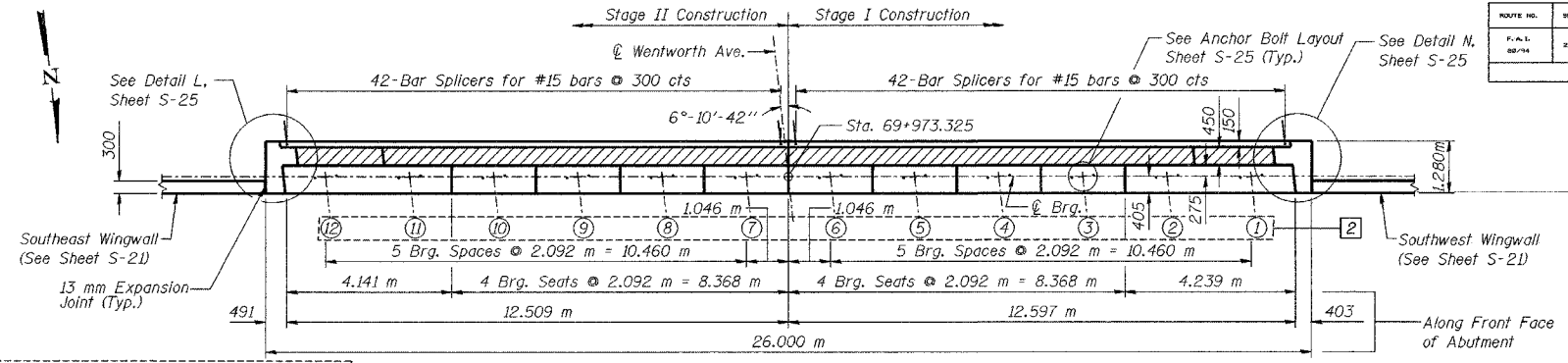
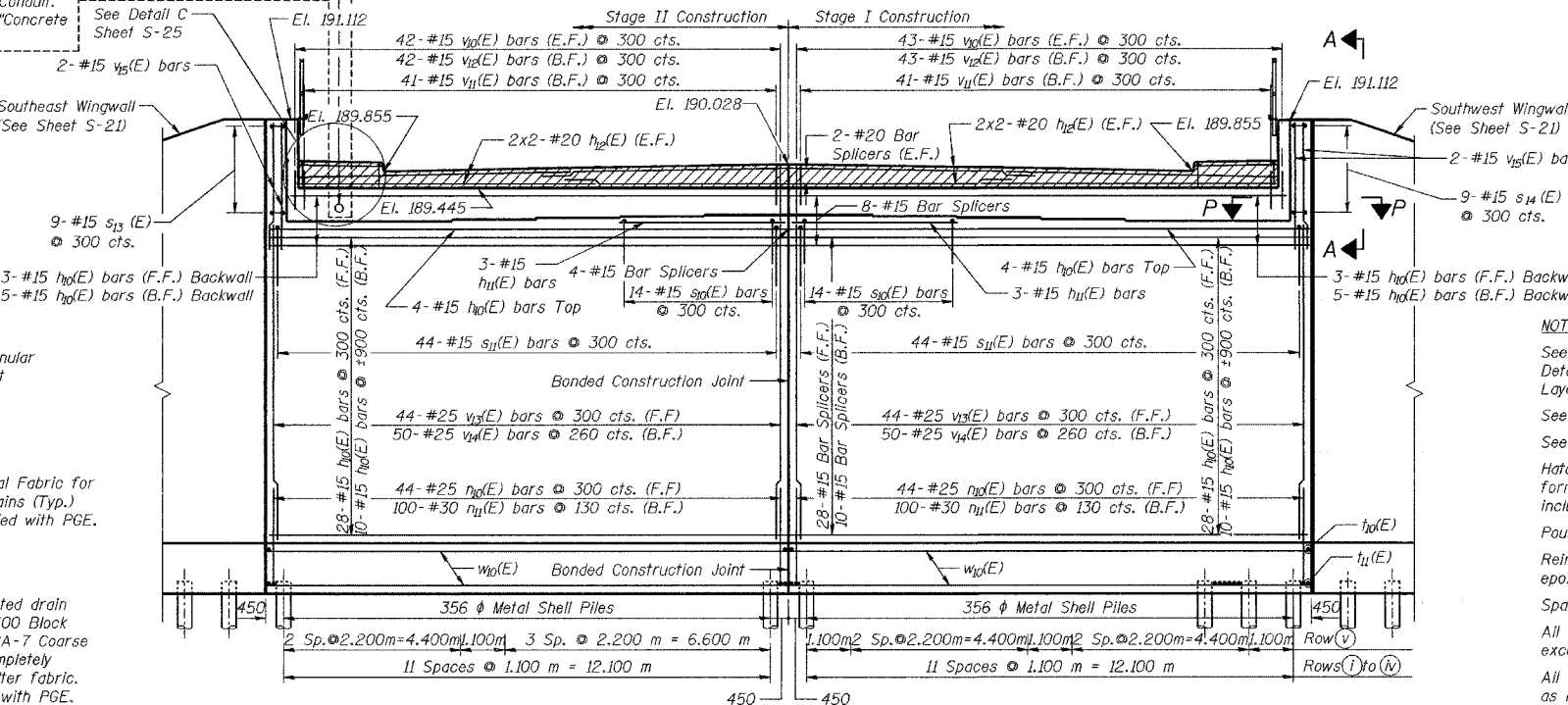


ELEVATIONS AT BACK OF BACKWALL

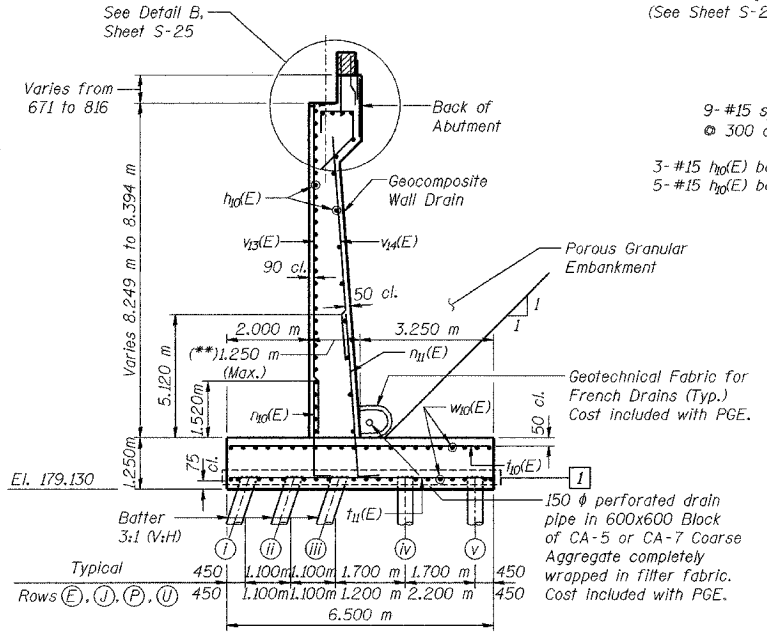
Beam	T/Hatch Block Elev.	Bearing Seat Elev.
1	189.868	188.629
2	189.868	188.629
3	189.910	188.670
4	189.950	188.711
5	189.982	188.742
6	190.013	188.774
7	190.013	188.774
8	189.982	188.743
9	189.950	188.711
10	189.910	188.671
11	189.868	188.629
12	189.868	188.629



75 mm Sleeve for 65mm PVC Coated Rigid Steel Conduit. Cost included with "Concrete Structures".



NOTES:
 See Sheet S-25 for View A-A, Detail B, Detail C, Detail L, Detail N, Section P-P, and Anchor Bolt Layout.
 See Sheet S-26 for Expansion Joint Detail.
 See Sheet S-28 for Rustication details.
 Hatched area to be poured after superstructure forms have been removed. Quantity of concrete included with "Concrete Superstructure."
 Four steps monolithically with cap.
 Reinforcement bars designated (E) shall be epoxy coated.
 Space reinforcement in cap to miss anchor bolts.
 All edges shall have standard 20 mm chamfers except as noted.
 All dimensions are in millimeters (mm) except as noted.
 See Electrical Drawings for location of 65 mm PVC Coated Rigid Steel Conduit.



SECTION THRU SOUTH ABUTMENT
 (**NOTE: Wall thickness includes 40 mm Rustication.)

PILE DATA

Type - 356 ϕ Metal Shell
 Capacity - 400 kN
 Est. Length - 12.0 m
 No. Req'd. - 254
 Test Piles - 1

LEGEND

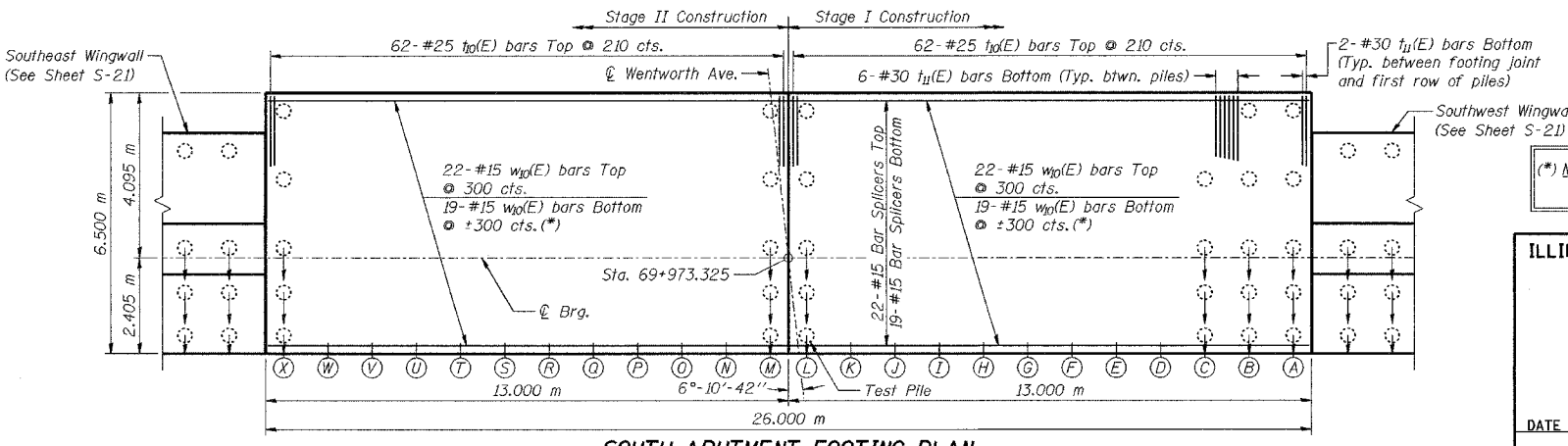
B.F. = Back Face
 F.F. = Front Face
 E.F. = Each Face

MINIMUM BAR LAPS

#15 bars = 640
 #20 bars = 790
 #25 bars = 1320
 #30 bars = 1850

DESIGNED	BHS
CHECKED	GSP
DRAWN	BHS
CHECKED	GSP

2 REVISED 03-29-04 BHS
 1 REVISED 09-10-03 KFA



(*) NOTE: Bars must be cut in the field to avoid the offset piles (E), (J), (P), and (U) in Row (iv).

ILLINOIS DEPARTMENT OF TRANSPORTATION
 F.A.I. ROUTE 80/94 (KINGERY EXPRESSWAY)
 UNDER WENTWORTH AVE
SOUTH ABUTMENT PLAN
SECTION 2626.1B
COOK COUNTY
STATION 7+579.488
STRUCTURE NO. 016-2790
 DATE 07/05
AMERICAN
 CONSULTING ENGINEERS

FOR INFORMATION ONLY