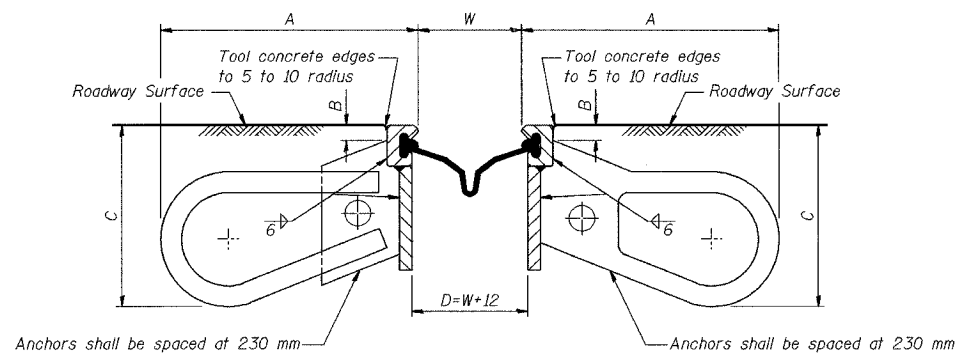


ROUTE NO.	SECTION	COUNTY	SHEET NO.	TOTAL SHEETS	SHEET NO. S-31
F.A.L. 80/94	2626.2-R-1	LAKE COUNTY, INDIANA	1207	650	72 SHEETS
SILENCE		FED. AID PROJECT			

CONTRACT NO. 62114 INDOT DES. NO. 0100987



**INSTALLATION DETAIL**

Ambient Temperature °C	DIMENSION W		
	Expansion Length		
	30 m-60 m	60 m-90 m	90 m-120 m
50°	54	33	13
40°	62	44	29
25°	68	55	43
15°	76	67	57
5°	84	78	71
-5°	90	89	86
-15°	98	100	102

DIMENSIONS			
ALTERNATES	A	B	C
A-1	248	25	185
A-2	248	25	185
B-1	248	25	185
B-2	248	25	185
C-1	248	30	185
C-2	248	30	185

**GENERAL NOTES**

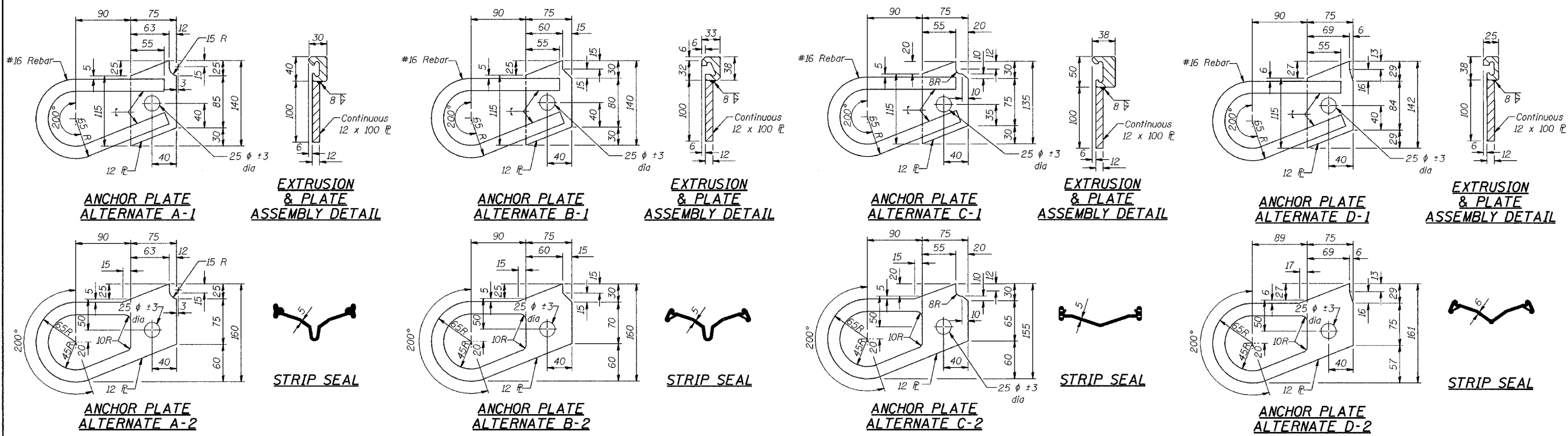
The strip seal shall be made continuous and shall have a minimum thickness of 5 mm. The configuration of the strip seal shall match the configuration of the Locking Edge Rails.

The height and thickness of the Locking Edge Rails shown are minimum dimensions. The actual configuration of the Locking Edge Rails and matching strip seal may vary from manufacturer to manufacturer. Flanged edge rails will not be allowed.

Locking Edge Rails may be spliced at slope discontinuities and stage construction joints.

The manufacturer's recommended installation methods shall be followed.

All dimensions are in millimeters (mm) except as noted. Details are in accordance with INDOT Standard Drawing No. 724-BSSJ-01, 724-BSSJ-02, 724-BSSJ-03, 724-BSSJ-04, 724-BSSJ-04A, 724-BSSJ-08 and 724-BSSJ-09.



**ANCHOR PLATE ALTERNATE A-1**

**EXTRUSION & PLATE ASSEMBLY DETAIL**

**ANCHOR PLATE ALTERNATE B-1**

**EXTRUSION & PLATE ASSEMBLY DETAIL**

**ANCHOR PLATE ALTERNATE C-1**

**EXTRUSION & PLATE ASSEMBLY DETAIL**

**ANCHOR PLATE ALTERNATE D-1**

**EXTRUSION & PLATE ASSEMBLY DETAIL**

**ANCHOR PLATE ALTERNATE A-2**

**STRIP SEAL**

**ANCHOR PLATE ALTERNATE B-2**

**STRIP SEAL**

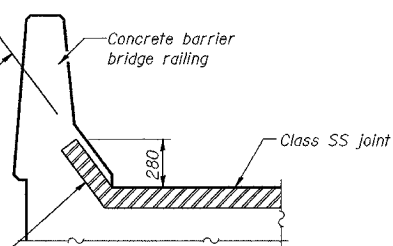
**ANCHOR PLATE ALTERNATE C-2**

**STRIP SEAL**

**ANCHOR PLATE ALTERNATE D-2**

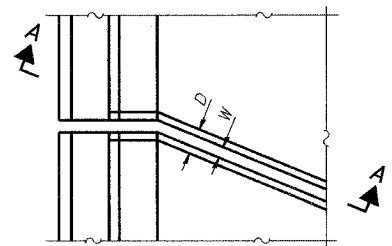
**STRIP SEAL**

The joint shall be placed parallel to the lower sloped face of the rail with a maximum 75 depth to the top of the extrusion.



**SECTION A-A**

**CONCRETE BARRIER BRIDGE RAILING**



**PLAN**

**PLAN DIMENSIONS AT 10° C**

Location	W	D
W Abut	73	85
Pier 3	73	85
E Abut	80	92

**PHASE 2 FOR INFORMATION ONLY**

**BILL OF MATERIAL**

Item	Unit	Phase 2	Phase 3
Structural Expansion Joint, SS	m	43.7	131.1

DESIGNED	BHS
CHECKED	KFA
DRAWN	MJB
CHECKED	GSP

The extrusion and plate assemblies with anchors shall be miter cut and shop spliced at this location. A miter cut, vulcanized shop splice will be required in the strip seal at this location.

ILLINOIS DEPARTMENT OF TRANSPORTATION  
 F.A.L. ROUTE 80/94 (BORMAN EXPRESSWAY)  
 OVER LITTLE CALUMET RIVER & N.I.C.T.D. R.O.W.

**EXPANSION JOINT DETAILS**  
**SECTION 2626.2-R-1**  
**LAKE COUNTY, INDIANA**  
**STATION 8+470.000**  
**STRUCTURE NO. I-80-1-8460 (EB & WB)**  
 DATE 07/05 (016-1003 & 016-1004)

**AMERICAN**  
 CONSULTING ENGINEERS