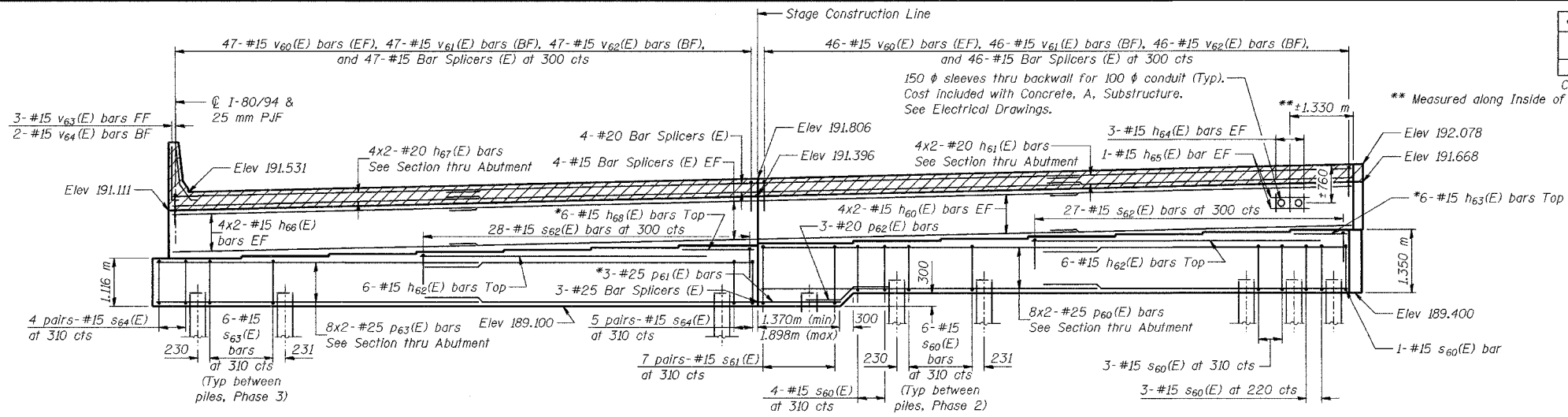


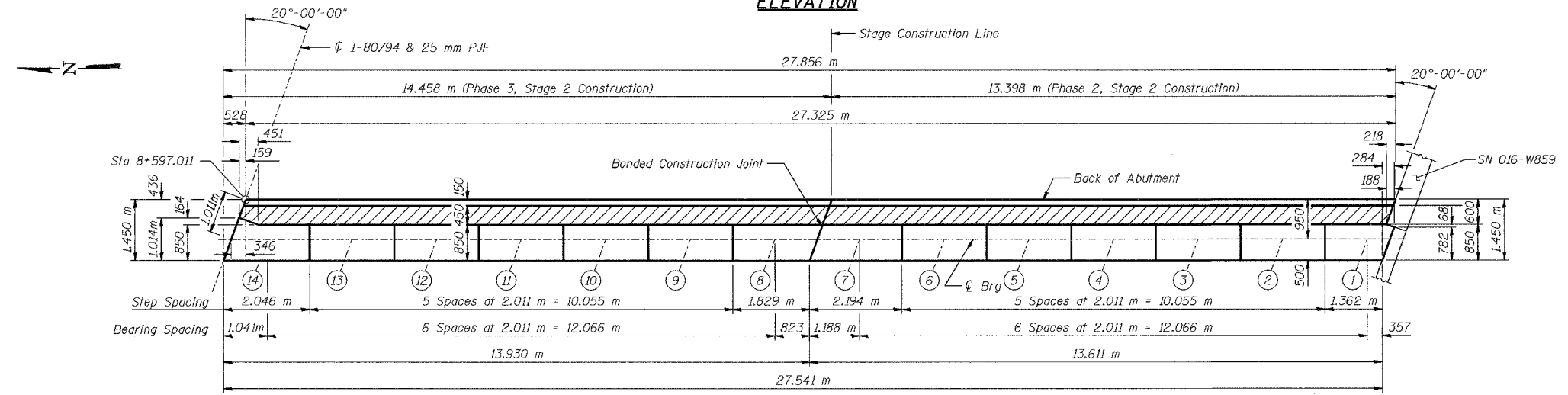
ROUTE NO.	SECTION	COUNTY	SHEET	SHEET NO. S-51
80/94	2626.2-R-1	LAKE COUNTY, INDIANA	1207	72 SHEETS
ILLINOIS		INDOT DES. NO. 0100987		
CONTRACT NO. 62114		** Measured along Inside of Backwall.		



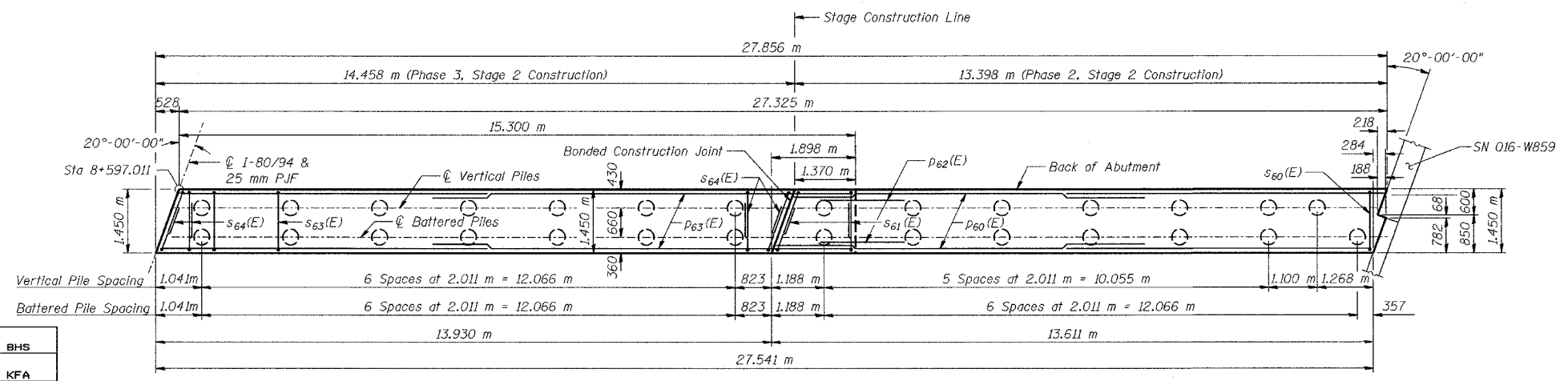
**BEARING SEAT ELEVATIONS**

Beam	Seat Elevation
14	190.216
13	190.257
12	190.299
11	190.340
10	190.381
9	190.422
8	190.463
7	190.505
6	190.546
5	190.587
4	190.628
3	190.668
2	190.709
1	190.750

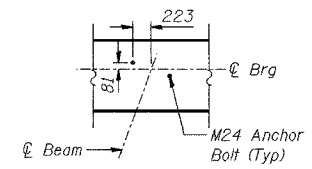
**ELEVATION**



**TOP VIEW**



**PLAN-PILE CAP**



**ANCHOR BOLT LAYOUT**

**LEGEND**

EF - Each Face  
FF - Front Face  
BF - Back Face

**MINIMUM BAR LAPS**

#15 bars = 640  
#20 bars = 790  
#25 bars = 1320

**NOTES:**

See Sheet No S-53 for abutment details, Expansion Joint Detail, and Bill of Material.  
Space reinforcement in cap to miss anchor bolts.  
Pour steps monolithically with cap.  
Hatched area to be poured after superstructure forms have been removed. Quantity of concrete included with Concrete, C, Superstructure.  
Reinforcement bars designated (E) shall be epoxy coated.  
Bars indicated thus 20 x 3-#15 etc. indicates 20 lines of bars with 3 lengths per line.  
All dimensions are in millimeters (mm) except as noted.  
All edges shall have standard 20 mm chamfers except as noted.  
\* Cut bars to fit in field.  
Apply Surface Seal to top surface of abutment seat and vertical faces of steps.

DESIGNED	BHS
CHECKED	KFA
DRAWN	MJB
CHECKED	GSP

**PHASE 2 FOR INFORMATION ONLY**

ILLINOIS DEPARTMENT OF TRANSPORTATION  
F.A.I. ROUTE 80/94 (BORMAN EXPRESSWAY)  
OVER LITTLE CALUMET RIVER & N.I.C.T.D. R.O.W.  
**EAST ABUTMENT - EASTBOUND**  
SECTION 2626.2-R-1  
LAKE COUNTY, INDIANA  
STATION 8+470.000  
STRUCTURE NO. I-80-1-8460 (EB & WB)  
DATE 07/05 (016-1003 & 016-1004)  
**AMERICAN**  
CONSULTING ENGINEERS