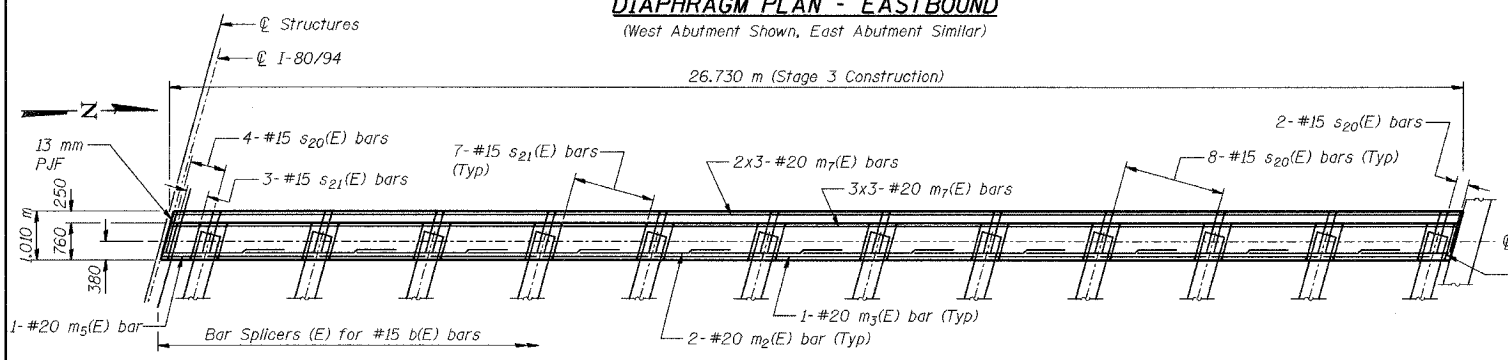
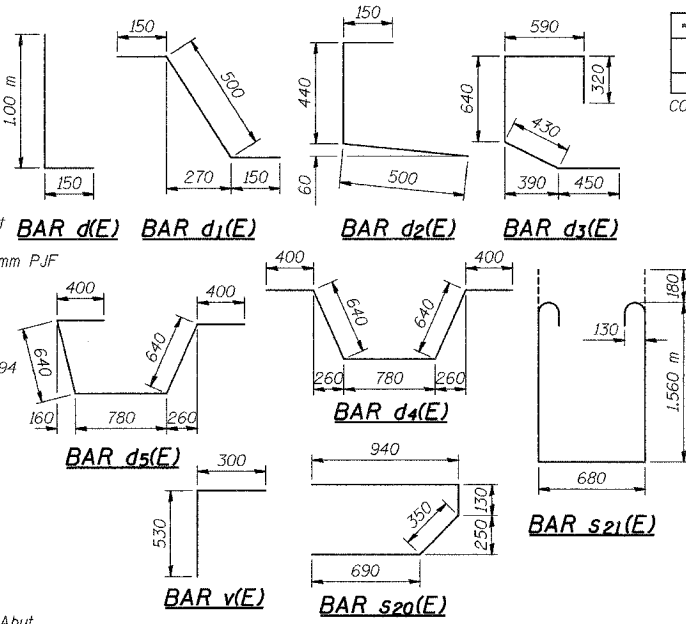


DIAPHRAGM PLAN - EASTBOUND
(West Abutment Shown, East Abutment Similar)



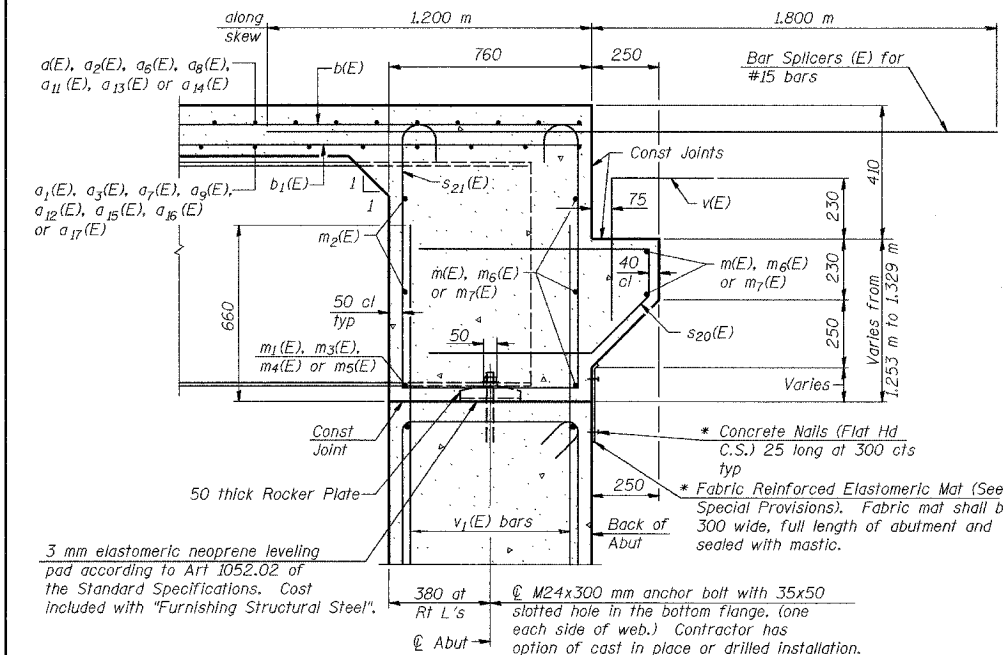
DIAPHRAGM PLAN - WESTBOUND
(West Abutment Shown, East Abutment Similar)



NOTES:
Reinforcement bars designated (E) shall be epoxy coated.
All concrete edges shall have a 20 mm chamfer.
Concrete in diaphragm is included with Concrete, C, Superstructure.
See Sheet No S-17 for anchor bolt details.
Bar Splicers paid for as "Threaded Tie Bar Assembly, Epoxy Coated."
Cost of 13 mm PJF included with Concrete, C, Superstructure.
All dimensions are in millimeters (mm) except as noted.

BILL OF MATERIAL

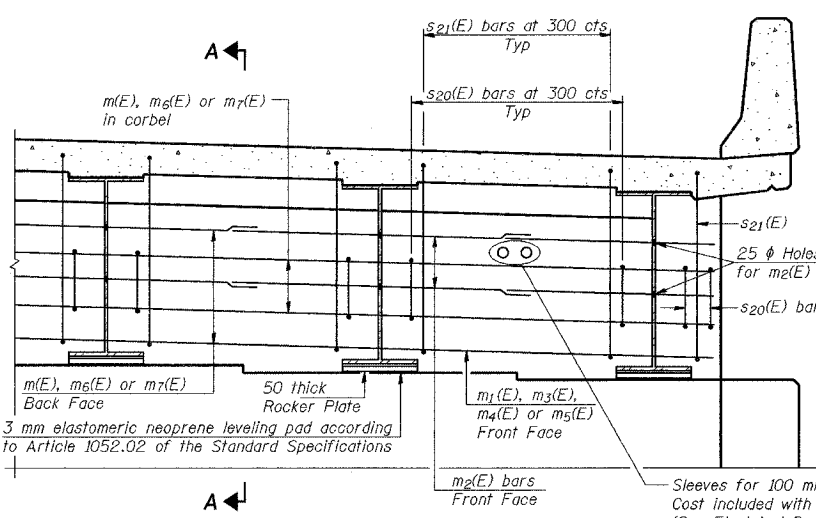
| Bar | No. | Size | Length (m) | Shape |
|--|------|----------------|------------|-------|
| a(E) | 182 | #15 | 14.80 | — |
| a1(E) | 131 | #15 | 14.70 | — |
| a2(E) | 22 | #15 | 14.74 | — |
| a3(E) | 15 | #15 | 14.97 | — |
| a4(E) | 8 | #15 | 7.86 | — |
| a5(E) | 408 | #20 | 1.37 | — |
| a6(E) | 187 | #15 | 11.15 | — |
| a7(E) | 135 | #15 | 11.05 | — |
| a8(E) | 16 | #15 | 11.28 | — |
| a9(E) | 12 | #15 | 10.70 | — |
| a10(E) | 4 | #15 | 11.32 | — |
| a11(E) | 368 | #15 | 13.35 | — |
| a12(E) | 411 | #15 | 9.08 | — |
| a13(E) | 20 | #15 | 13.78 | — |
| a14(E) | 19 | #15 | 13.84 | — |
| a15(E) | 9 | #15 | 9.36 | — |
| a16(E) | 9 | #15 | 9.98 | — |
| a17(E) | 10 | #15 | 9.67 | — |
| a18(E) | 12 | #15 | 9.26 | — |
| b(E) | 732 | #15 | 9.66 | — |
| b1(E) | 725 | #15 | 7.85 | — |
| d(E) | 1080 | #15 | 1.15 | └ |
| d1(E) | 540 | #15 | 0.80 | └ |
| d2(E) | 540 | #15 | 1.09 | └ |
| d3(E) | 168 | #20 | 2.43 | └ |
| d4(E) | 96 | #20 | 2.86 | └ |
| d5(E) | 16 | #20 | 2.86 | └ |
| e(E) | 160 | #15 | 5.90 | — |
| e1(E) | 40 | #25 | 8.40 | — |
| e2(E) | 32 | #15 | 9.66 | — |
| e3(E) | 64 | #15 | 3.29 | — |
| e4(E) | 28 | #15 | 2.11 | — |
| m(E) | 20 | #20 | 7.84 | — |
| m1(E) | 2 | #20 | 0.64 | — |
| m2(E) | 96 | #20 | 3.11 | — |
| m3(E) | 42 | #20 | 2.20 | — |
| m4(E) | 2 | #20 | 1.48 | — |
| m5(E) | 4 | #20 | 0.79 | — |
| m6(E) | 10 | #20 | 11.64 | — |
| m7(E) | 30 | #20 | 9.40 | — |
| s20(E) | 376 | #15 | 2.11 | └ |
| s21(E) | 324 | #15 | 4.16 | └ |
| v(E) | 342 | #15 | 0.83 | └ |
| Concrete, C, Superstructure | | m ³ | 601.6 | |
| Surface Seal (Estimated) | | m ² | 2,086 | |
| Reinforcing Bars, Epoxy Coated | | kg | 65,790 | |
| Threaded Tie Bar Assembly, Epoxy Coated | | Each | 695 | |
| Noise Abatement Wall Anchor Rod Assembly | | Each | 28 | |



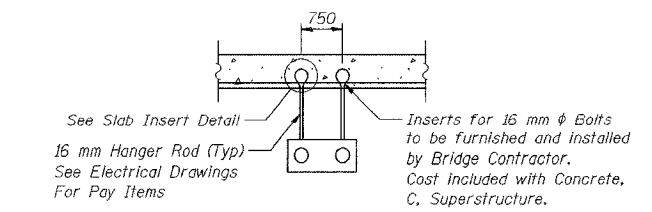
SECTION A-A

Dimensions at right angles to abutment, except as shown.
* Cost included with "Concrete, C, Superstructure".

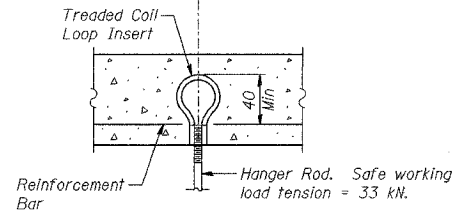
| | |
|----------|-----|
| DESIGNED | BHS |
| CHECKED | KFA |
| DRAWN | MJB |
| CHECKED | GSP |



DIAPHRAGM ELEVATION AT ABUTMENT



2 CONDUITS SUPPORT DETAIL
Max Spacing = 1.05 m



SLAB INSERT DETAIL

ILLINOIS DEPARTMENT OF TRANSPORTATION
F.A.I. ROUTE 80/94 (BORMAN EXPRESSWAY)
OVER HARRISON AVENUE

SUPERSTRUCTURE DETAILS
SECTION 2626.2-R-2
LAKE COUNTY, INDIANA
STATION 8+754.874
STRUCTURE NO. I-80-1-8461 (EB & WB)
DATE 09/05 (016-1005 & 016-1006)

AMERICAN
CONSULTING ENGINEERS