

F.A.I. RTE.	SECTION	COUNTY	TOTAL SHEETS	SHEET NO.
80/94	2626.2-R-2	COOK	1207	733
STA.	TO STA.			
FED. ROAD DIST. NO.	ILLINOIS	FED. AID PROJECT		

CONTRACT NO. 62114

BAR LIST

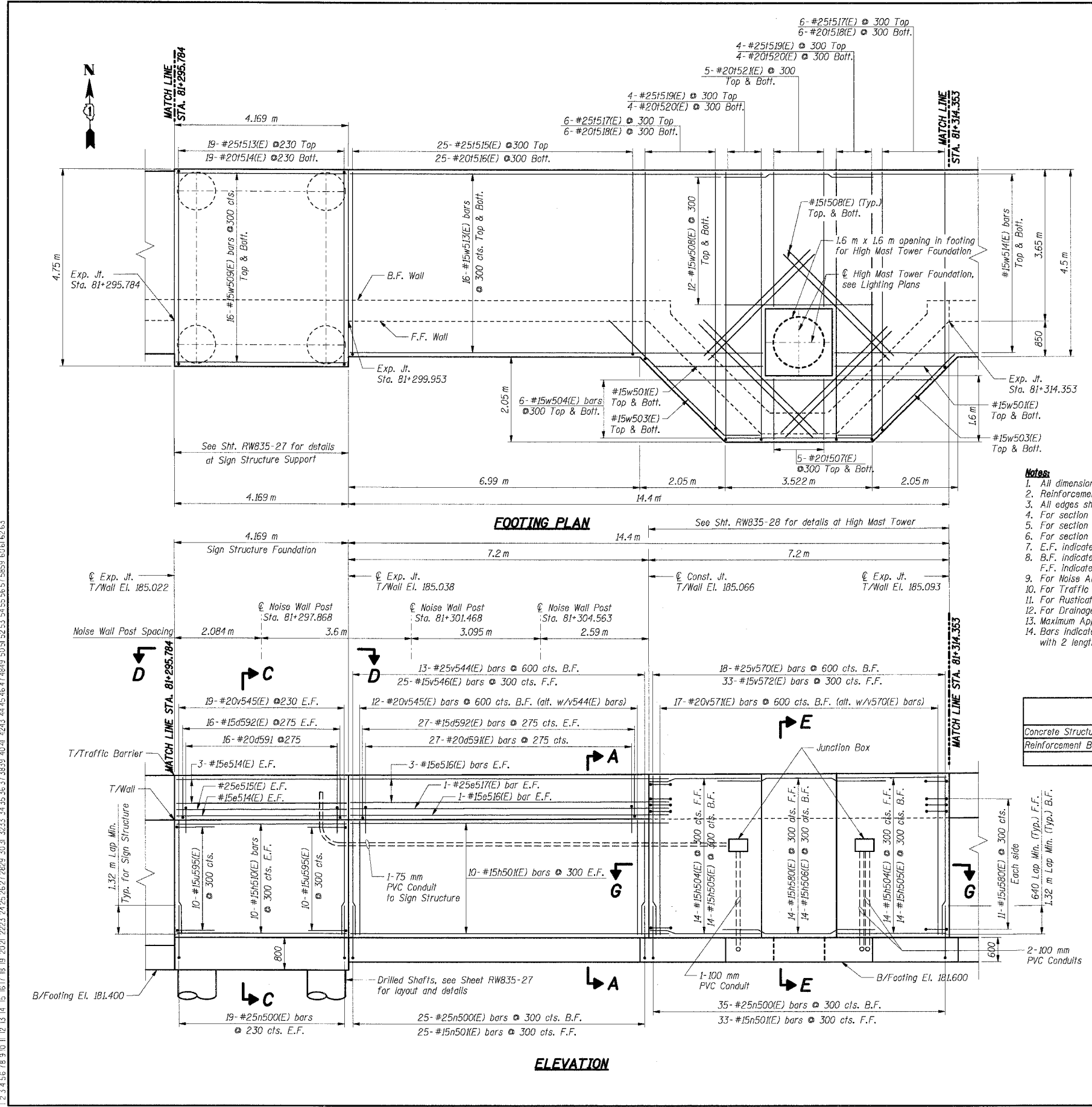
Bar	No.	Size	Length (m)	Shape
d580(E)	6	#20	1.15	
d591(E)	43	#20	2.59	
d592(E)	86	#15	1.22	
e514(E)	8	#15	4.05	
e515(E)	2	#25	4.05	
e516(E)	8	#15	7.65	
e517(E)	2	#25	7.65	
h501(E)	20	#15	7.65	
h504(E)	28	#15	3.80	
h505(E)	28	#15	4.40	
h506(E)	14	#15	2.55	
h510(E)	20	#15	4.05	
h516(E)	4	#15	0.50	
h580(E)	14	#15	2.85	
h581(E)	2	#15	0.75	
h582(E)	4	#15	2.50	
h583(E)	2	#15	0.42	
n500(E)	98	#25	2.30	
n501(E)	58	#15	1.50	
f507(E)	10	#20	1.50	
f508(E)	16	#15	3.50	
f513(E)	19	#25	5.85	
f514(E)	19	#20	5.85	
f515(E)	25	#25	4.90	
f516(E)	25	#20	4.40	
f517(E)	6	#25	11.85	
f518(E)	6	#20	10.85	
f519(E)	8	#25	6.95	
f520(E)	8	#20	6.45	
f521(E)	10	#20	3.25	
u580(E)	22	#15	2.16	
u581(E)	2	#15	1.91	
u582(E)	2	#15	1.96	
u583(E)	2	#15	1.81	
u584(E)	28	#10	0.81	
u595(E)	20	#15	3.30	
u596(E)	12	#15	1.50	
v544(E)	13	#25	2.80	
v545(E)	58	#20	2.80	
v546(E)	25	#15	2.80	
v570(E)	18	#25	3.70	
v571(E)	17	#20	3.70	
v572(E)	33	#15	3.70	
w501(E)	4	#15	2.70	
w503(E)	4	#15	4.90	
w504(E)	6	#15	10.00	
w509(E)	32	#15	4.05	
w508(E)	24	#15	3.50	
w513(E)	32	#15	9.90	

- Notes:**
- All dimensions are in millimeters (mm) except as noted.
 - Reinforcement bars designated (E) shall be epoxy coated.
 - All edges shall have a 20 mm chamfer unless noted otherwise.
 - For section A-A see Sheet RW835-26.
 - For section C-C and D-D see Sheet RW835-28.
 - For section E-E and section G-G see Sheet RW835-28.
 - E.F. indicates each face.
 - B.F. indicates back face.
 - F.F. indicates front face.
 - For Noise Abatement Wall pilaster details see sheet RW835-30.
 - For Traffic Barrier details see Sht. RW835-30.
 - For Rustication Finish & Joint details see Sht. RW835-32.
 - For Drainage and Reinforcement details see Sht. RW835-31.
 - Maximum Applied Soil Bearing Pressure, $Q_{max} = 100$ kPa.
 - Bars indicated thus 4x2-#15 etc. indicates 4 lines of bars with 2 lengths per line.

BILL OF MATERIAL

Item	Unit	Total
Concrete Structures	Cu m	113.0
Reinforcement Bars, Epoxy Coated	Kg	7,440

THIS SHEET FOR INFORMATION ONLY



7-F-2005, 1032557
 12 3 4 56 78 9 10 11 12 13 14 15 16 17 18 19 20 21 2223 24 25 26 27 28 29 30 31 32 33 34 35 36 37 38 39 40 41 42 43 44 45 46 47 48 49 50 51 52 53 54 55 56 57 58 59 60 61 62 63
 BALZEEKJ
 T:\DOCUMENTS\951750A\STRUCT\CONV\RSR26262ADON
 13-2005, 1032557

SHT. RW835-15 OF 34

REVISIONS	
NAME	DATE

ILLINOIS DEPARTMENT OF TRANSPORTATION
 F.A.I. ROUTE 80/94 (KINGERY EXPRESSWAY)
 IL ROUTE 83 RECONSTRUCTION
 RETAINING WALL - STRUCTURE NO. 016-W835
 SECTION 2425 R-3 & 2425-711B
 COOK COUNTY

FOOTING PLAN & WALL ELEVATION 11

DATE: 02/20/2004

DRAWN BY: DG
 CHECKED BY: SC

TENG
 TENG & ASSOCIATES, INC.
 ENGINEERS/ARCHITECTS/PLANNERS
 CHICAGO, ILLINOIS