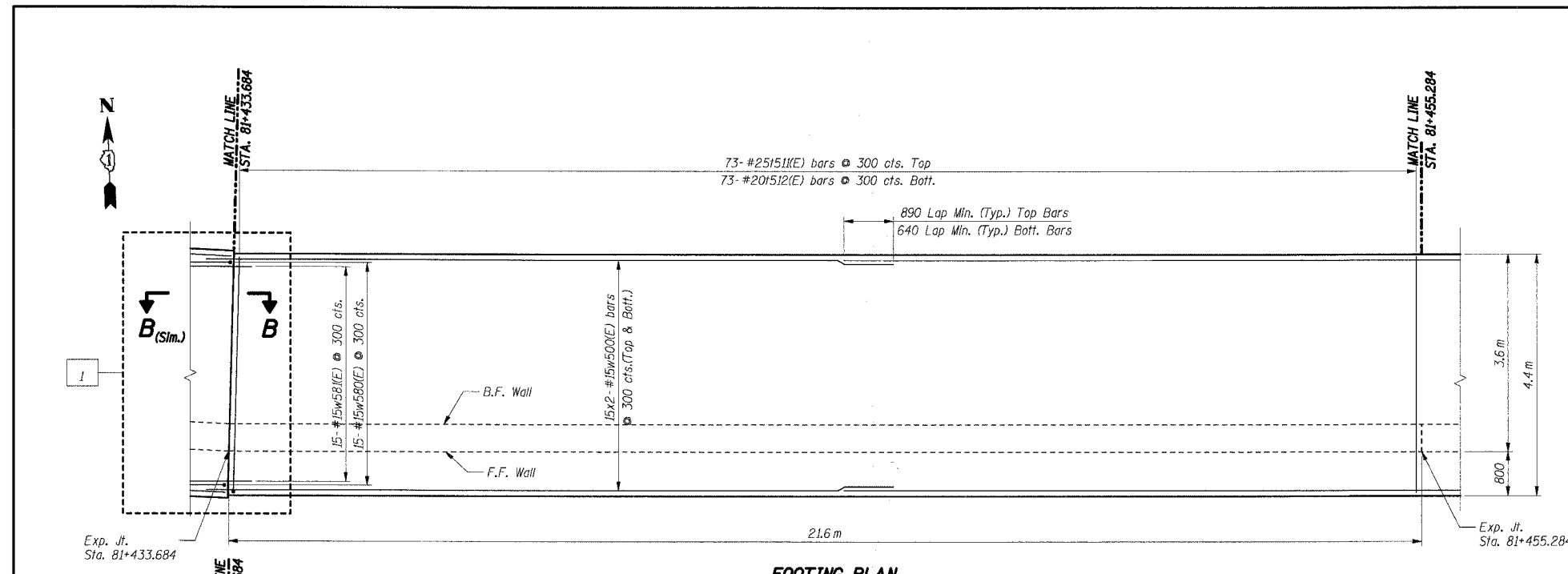
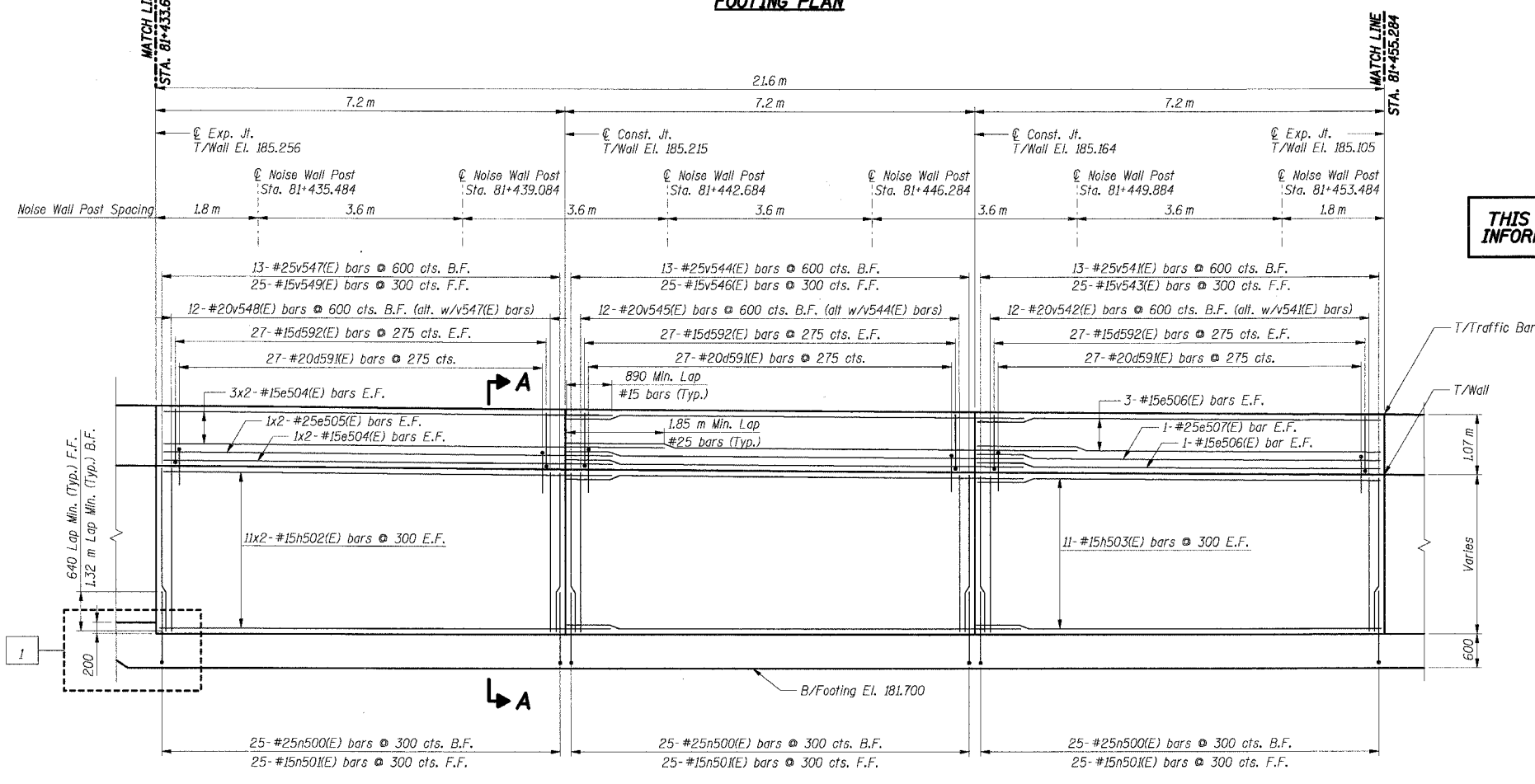


F.A.I. RTE.	SECTION	COUNTY	TOTAL SHEETS	SHEET NO.
80/94	2626.2-R-2	COOK	1207	740
STA.	TO STA.			
FED. ROAD DIST. NO.	ILLINOIS	FED. AID PROJECT		
CONTRACT NO. 62114				



**FOOTING PLAN**



**ELEVATION**

**BAR LIST**

Bar	No.	Size	Length (m)	Shape
d59(E)	81	#20	2.59	┌
d592(E)	162	#15	1.22	┌
e504(E)	16	#15	8.05	—
e505(E)	4	#25	9.05	—
e506(E)	8	#15	7.15	—
e507(E)	2	#25	7.15	—
h502(E)	44	#15	8.05	—
h503(E)	22	#15	7.15	—
n500(E)	75	#25	2.30	┌
n501(E)	75	#15	1.50	┌
f511(E)	73	#25	4.80	┌
f512(E)	73	#20	4.30	┌
v541(E)	13	#25	2.75	—
v542(E)	12	#20	2.75	—
v543(E)	25	#15	2.75	—
v544(E)	13	#25	2.80	—
v545(E)	12	#20	2.80	—
v546(E)	25	#15	2.80	—
v547(E)	13	#25	2.85	—
v548(E)	12	#20	2.85	—
v549(E)	25	#15	2.85	—
w500(E)	60	#15	12.00	—
w580(E)	15	#15	1.50	┌
w581(E)	15	#15	2.20	┌

**THIS SHEET FOR INFORMATION ONLY**

**BILL OF MATERIAL**

Item	Unit	Total
Concrete Structures	Cu m	97.0
Reinforcement Bars, Epoxy Coated	kg	7,280

- Notes:**
- All dimensions are in millimeters (mm) except as noted.
  - Reinforcement bars designated (E) shall be epoxy coated.
  - All edges shall have a 20 mm chamfer unless noted otherwise.
  - For section A-A and section B-B see Sheet RW835-26.
  - E.F. indicates each face.
  - B.F. indicates back face.
  - F.F. indicates front face.
  - For Noise Abatement Wall plaster details see sheet RW835-30.
  - For Traffic Barrier details see Sht. RW835-30.
  - For Rustication Finish & Joint details see Sht. RW835-32.
  - For Drainage and Reinforcement details see Sht. RW835-31.
  - Maximum Applied Soil Bearing Pressure,  $Q_{max} = 98$  kPa.
  - Bars indicated thus 4x2-#15 etc. indicates 4 lines of bars with 2 lengths per line.

**SHT. RW835-22 OF 34**

REVISIONS	
NAME	DATE
PA	8/3/04

ILLINOIS DEPARTMENT OF TRANSPORTATION  
 F.A.I. ROUTE 80/94 (KINGERY EXPRESSWAY)  
 IL ROUTE 83 RECONSTRUCTION  
 RETAINING WALL - STRUCTURE NO. 016-W835  
 SECTION 2425 R-3 & 2425-711B  
 COOK COUNTY

**FOOTING PLAN & WALL ELEVATION 18**

DATE: 02/20/2004  
 DRAWN BY: DG  
 CHECKED BY: SC

**TENG**  
 TENG & ASSOCIATES, INC.  
 ENGINEERS/ARCHITECTS/PLANNERS  
 CHICAGO, ILLINOIS

7-11-2005, 13:33:36  
 T:\DOCUMENT\83750\STRUCT\CON\RS82\32A.DGN  
 1 2 3 4 5 6 7 8 9 10 11 12 13 14 15 16 17 18 19 20 21 22 23 24 25 26 27 28 29 30 31 32 33 34 35 36 37 38 39 40 41 42 43 44 45 46 47 48 49 50 51 52 53 54 55 56 57 58 59 60 61 62 63