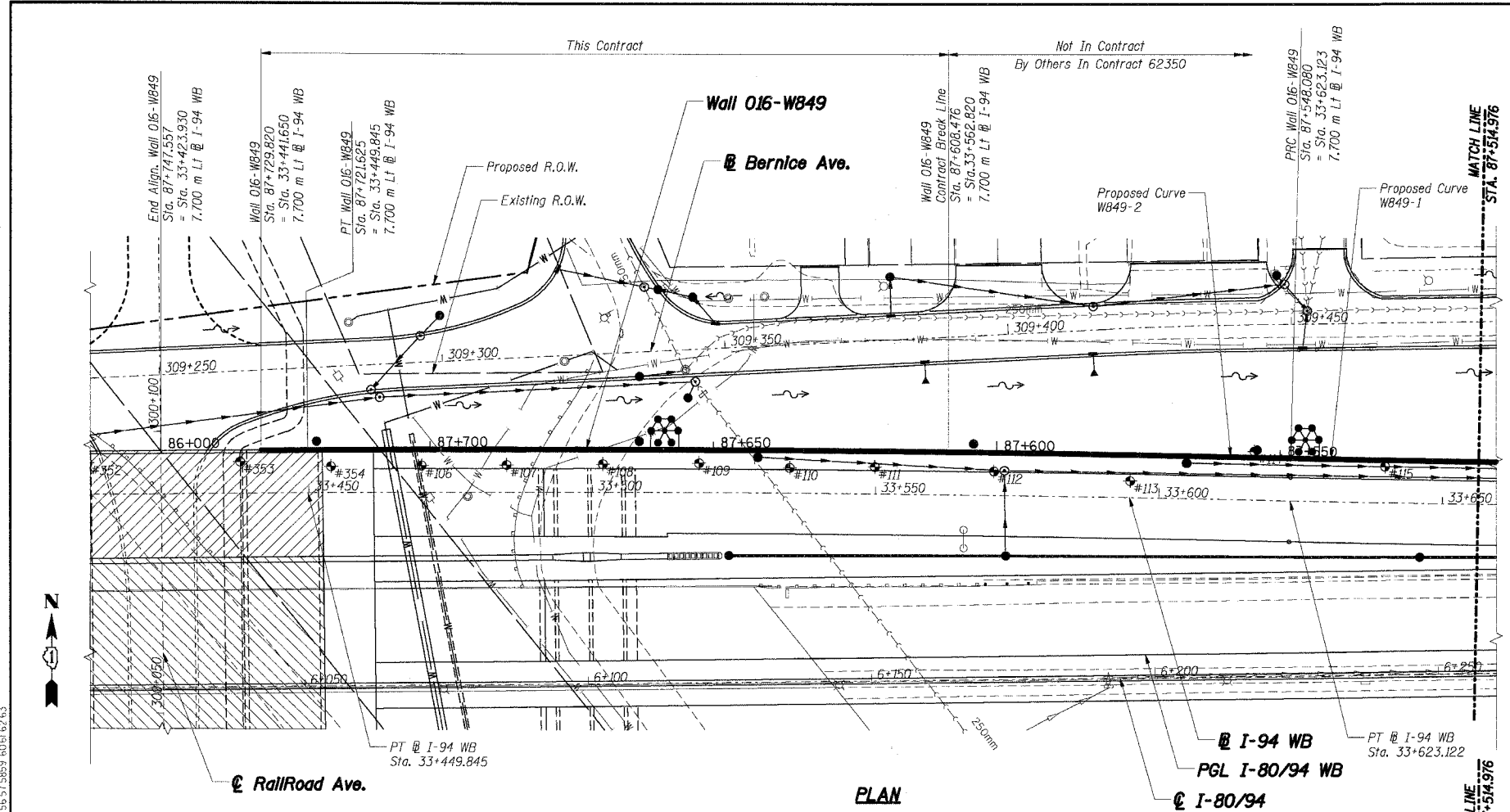
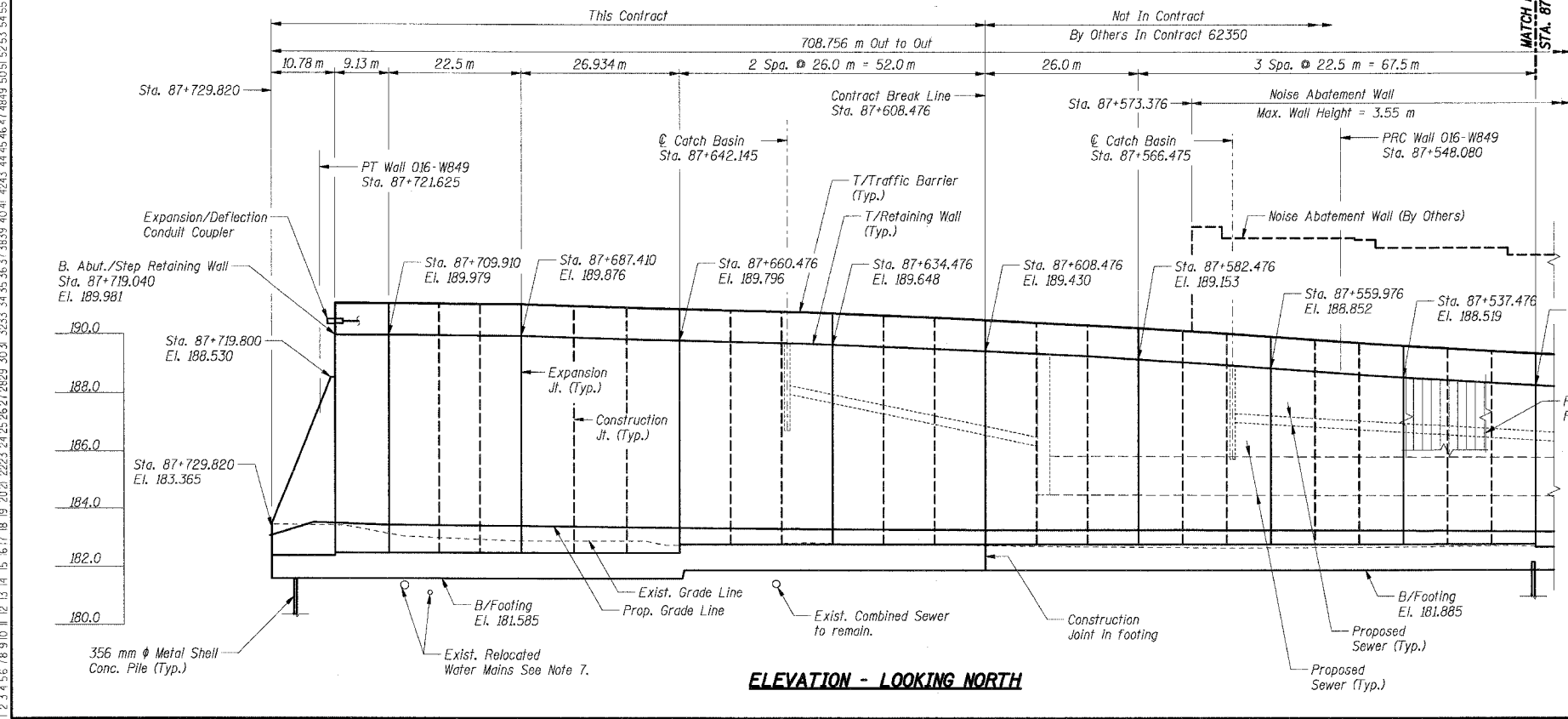


|                     |            |                  |              |           |
|---------------------|------------|------------------|--------------|-----------|
| F.A.I. RTE.         | SECTION    | COUNTY           | TOTAL SHEETS | SHEET NO. |
| 80/94               | 2626.2-R-2 | COOK             | 1207         | 756       |
| STA.                | TO STA.    |                  |              |           |
| FED. ROAD DIST. NO. | ILLINOIS   | FED. AID PROJECT |              |           |

CONTRACT NO. 62114



PLAN



ELEVATION - LOOKING NORTH

**DESIGN SPECIFICATIONS:**

1996 AASHTO Standard Specifications for Highway Bridges, with 1997 thru 2000 & 2002 Interims.

1989 AASHTO Guide Specifications for Structural Design of Sound Barriers with 1992 Interims.

**DESIGN STRESSES:**

Concrete,  $f'_c = 24 \text{ MPa}$   
Reinforcement,  $f_y = 400 \text{ MPa}$

**DESIGN LOADING:**

Noise Abatement Wall:  
Wind Load: 1.7 kPa  
Limits: Sta. 87+032.974 to Sta. 87+235.276  
Design Height: 4.23 m measured from Top of Retaining Wall  
Limits: Sta. 87+235.276 to Sta. 87+573.376  
Design Height: 3.55 m measured from Top of Retaining Wall

**BENCHMARK:**

BM "5E" Square cut in southeast corner of the southwest crashwall of existing I-80 Bridge over Railroad. El. 192.219

**EXISTING STRUCTURE:**

None

**LEGEND**

- High Mast Light Tower (By Others, Contract No. 62664)
- Existing Storm Sewer
- Proposed Storm Sewer
- Existing Combined Sewer, Note 7
- #5 Soil Boring
- Proposed Manhole
- Proposed Catch Basin
- Proposed Inlet
- Rip Rap
- Proposed Retaining Wall
- Proposed Pavement
- Existing Water Main, Note 7
- Existing Electric, Note 7
- Proposed R.O.W.
- Existing R.O.W.
- Proposed Bridge Structure S.N. 016-2792 Constructed in this Contract.
- Proposed Bridge Structure S.N. 016-2792 Constructed in Future Contract.

**Notes:**

1. All dimensions are measured along front face of retaining wall.
2. Wall alignment offsets are referenced to front face of wall.
3. Work this sheet with RW849-2 and RW849-3.
4. See Sht. RW849-4 for Index of Sheets.
5. See Sht. RW849-2 for Location Map.
6. See Sht. RW849-2 for Curve Data.
7. See Drainage Plans. See Sht. RW849-36 for relocated Water Mains.

**THIS SHEET FOR INFORMATION ONLY**

SHT. RW849-1 OF 61

| REVISIONS |      |
|-----------|------|
| NAME      | DATE |
|           |      |
|           |      |
|           |      |
|           |      |

ILLINOIS DEPARTMENT OF TRANSPORTATION  
F.A.I. ROUTE 80/94 (KINGERY EXPRESSWAY)  
EB & WB OUTSIDE LANES (MAINLINE) CONSTRUCTION  
RETAINING WALL - STRUCTURE NO. 016-W849  
SECTIONS 2001-167R AND (2425 & 2626) R-1  
COOK COUNTY

**GENERAL PLAN & ELEVATION I**

DATE: 8/18/2004

DRAWN BY: MJK  
CHECKED BY: MJK

**TENG**

TENG & ASSOCIATES, INC.  
ENGINEERS/ARCHITECTS/PLANNERS  
CHICAGO, ILLINOIS

7/1/2005, 16:35:58 T:\DOCUMENTS\93750N\_STRUCTURE\00A\PSI\902A\DWG 2/3 4 56 78 9 10 11 12 13 14 15 16 17 18 19 20 21 22 23 24 25 26 27 28 29 30 31 32 33 34 35 36 37 38 39 40 41 42 43 44 45 46 47 48 49 50 51 52 53 54 55 56 57 58 59 60 61 62 63