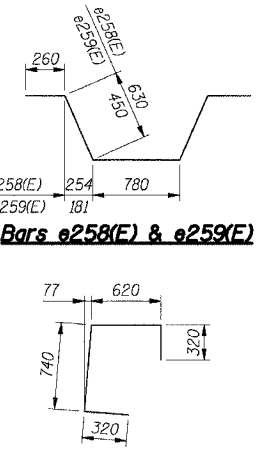
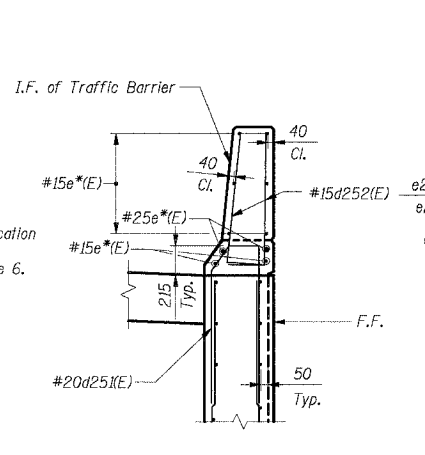
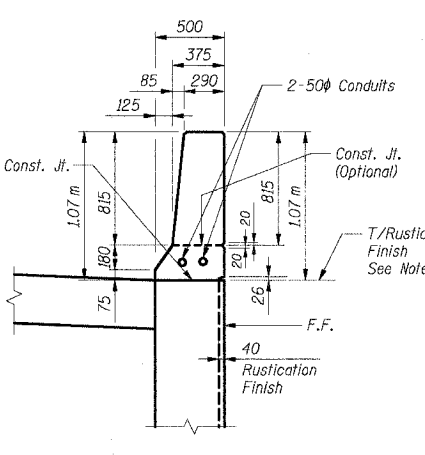
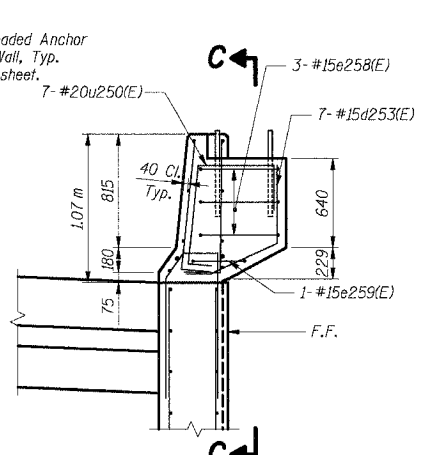
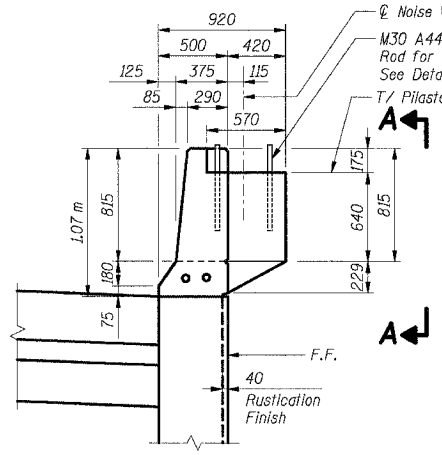


F.A.I. RTE.	SECTION	COUNTY	TOTAL SHEETS	SHEET NO.
80/94	2626.2-R-2	COOK	1207	779
STA.	TO STA.			
FED. ROAD DIST. NO.	ILLINOIS	FED. AID PROJECT		
CONTRACT NO. 62114				

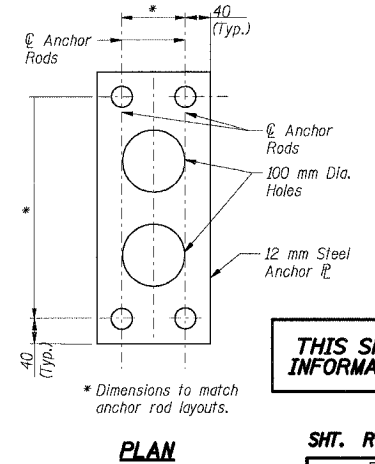
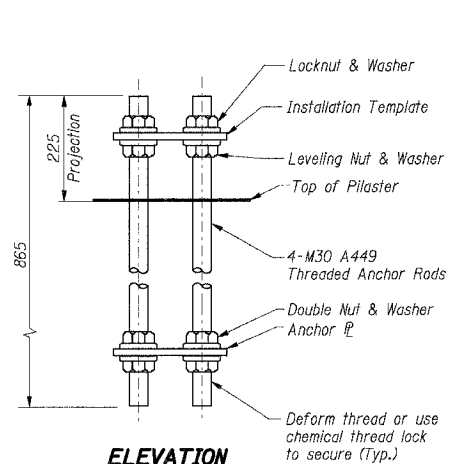
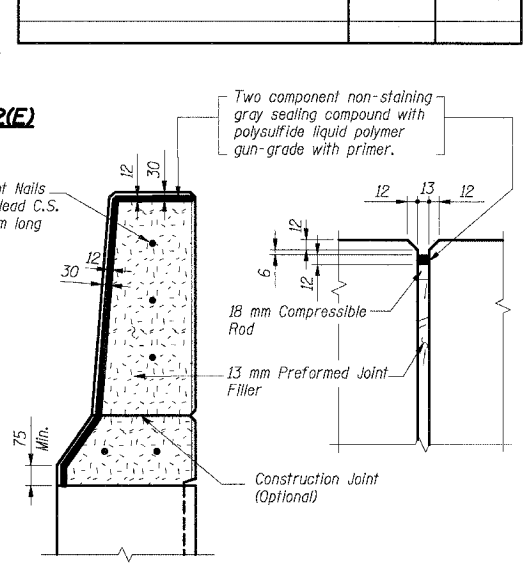
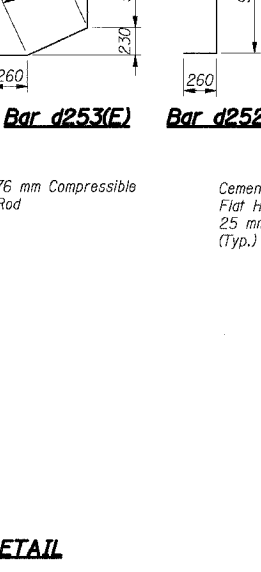
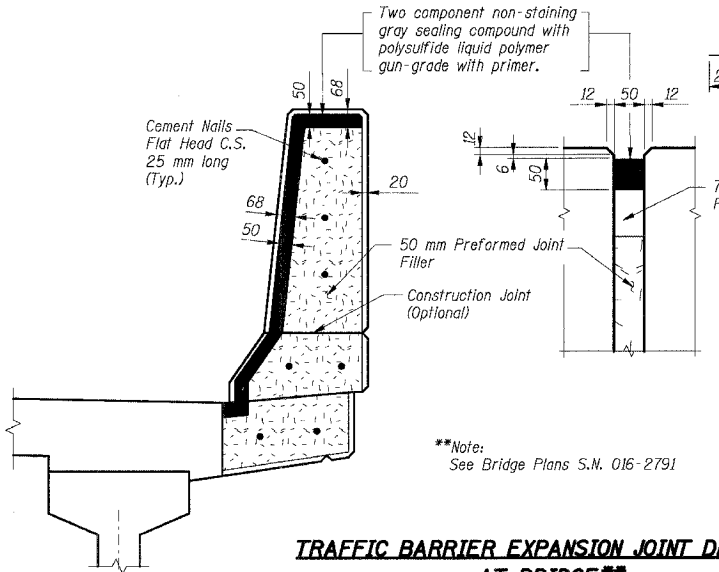
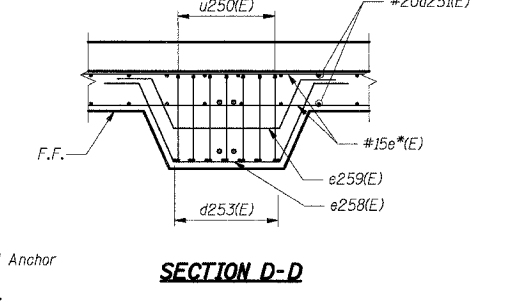
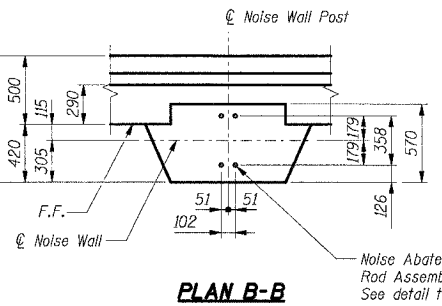
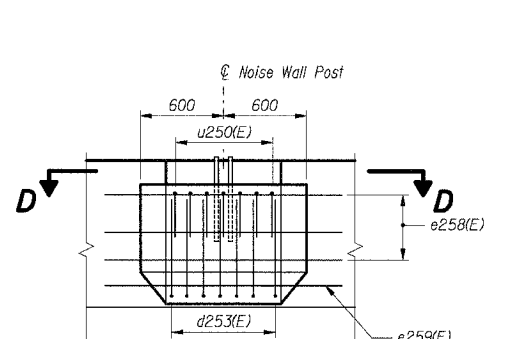
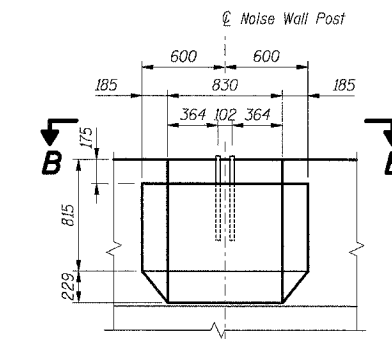


BAR LIST FOR EACH PILASTER (FOR INFORMATION ONLY)

Bar	No.	Size	Length (m)	Shape
d253(E)	7	#15	1.30	U
e258(E)	3	#15	2.56	W
e259(E)	1	#15	2.20	W
u250(E)	7	#20	2.00	C

BILL OF MATERIAL

Item	Unit	Total
Noise Abatement Wall Anchor Rod Assembly	Ea	13



NOISE ABATEMENT WALL ANCHOR ROD ASSEMBLY

Note: Entire anchor rod assembly shall be hot dip galvanized.

(13 Required)

THIS SHEET FOR INFORMATION ONLY

SHT. RW851-10 OF 14

REVISIONS	
NAME	DATE

- Notes:
- All dimensions are in millimeters (mm) except as noted.
 - Reinforcement bars designated (E) shall be epoxy coated.
 - All edges shall have a 20 mm chamfer unless noted otherwise.
 - E.F. indicates each face.
 - B.F. indicates back face.
 - F.F. indicates front face.
 - *Indicates for location of bars, identification and quantity, see Footing Plans & Wall Elevations.
 - For Rustication Finish details, see Shf. #rs40U.

ILLINOIS DEPARTMENT OF TRANSPORTATION
 F.A.I. ROUTE 80/94 (KINGERY EXPRESSWAY)
 EB & WB INSIDE LANES (MAINLINE) CONSTRUCTION
 RETAINING WALL - STRUCTURE NO. 016-W851
 SECTION (2425 & 2626) R-2
 COOK COUNTY

TRAFFIC BARRIER SECTIONS & DETAILS

DATE: 7/18/2005

DRAWN BY: MJK
 CHECKED BY: MJK

TENG

TENG & ASSOCIATES, INC.
 ENGINEERS/ARCHITECTS/PLANNERS
 CHICAGO, ILLINOIS

Shah Engineering, Inc.
 ONE TIM FLAKA SUITE 300
 CHICAGO, IL 60611
 TEL: 312.425.2900
 Consulting Engineers

I:\DOCUMENTS\BRIDGE\STRUCT\DOWN\RS8402A.DGN
 7-18-2005, 10:35:13
 2, 3, 4, 5, 6, 7, 8, 9, 10, 11, 12, 13, 14, 15, 16, 17, 18, 19, 20, 21, 22, 23, 24, 25, 26, 27, 28, 29, 30, 31, 32, 33, 34, 35, 36, 37, 38, 39, 40, 41, 42, 43, 44, 45, 46, 47, 48, 49, 50, 51, 52, 53, 54, 55, 56, 57, 58, 59, 60, 61, 62, 63
 BAIZEKJ