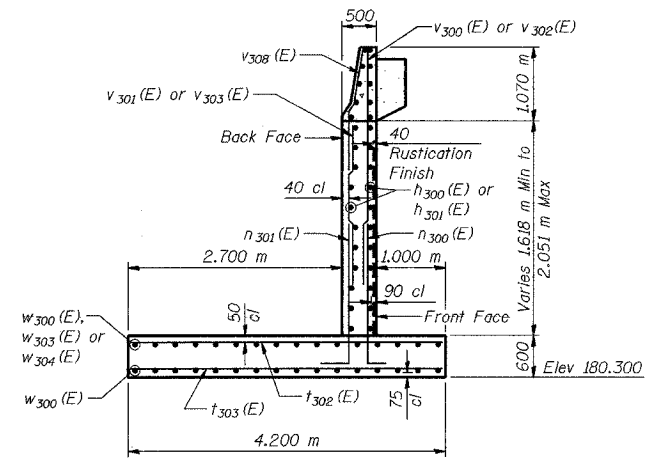
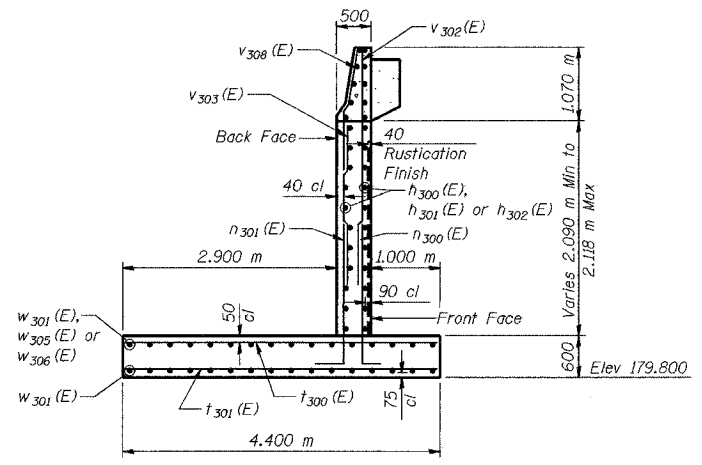


CONTRACT No. 62114
BILL OF MATERIAL

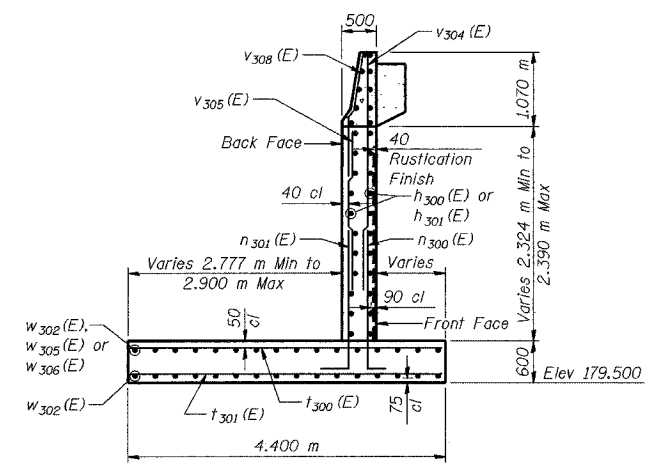
Bar No.	Size	Length (m)	Shape
h ₃₀₀ (E)	#15	7.84	—
h ₃₀₁ (E)	#15	7.10	—
h ₃₀₂ (E)	#15	3.67	—
h ₃₀₃ (E)	#11	2.30	—
h ₃₀₄ (E)	#11	1.10	—
h ₃₀₅ (E)	#8	1.50	—
h ₃₀₆ (E)	#12	2.86	—
h ₃₀₇ (E)	#12	2.34	—
h ₃₀₈ (E)	#15	0.60	—
n ₃₀₀ (E)	#15	1.84	L
n ₃₀₁ (E)	#15	1.90	L
t ₃₀₀ (E)	#30	4.30	—
t ₃₀₁ (E)	#30	4.30	—
t ₃₀₂ (E)	#260	4.10	—
t ₃₀₃ (E)	#218	4.10	—
v ₃₀₀ (E)	#150	2.36	—
v ₃₀₁ (E)	#150	1.29	—
v ₃₀₂ (E)	#239	2.73	—
v ₃₀₃ (E)	#239	1.66	—
v ₃₀₄ (E)	#75	3.00	—
v ₃₀₅ (E)	#75	1.93	—
v ₃₀₆ (E)	#75	3.24	—
v ₃₀₇ (E)	#75	2.17	—
v ₃₀₈ (E)	#539	1.76	—
v ₃₀₉ (E)	#276	2.39	—
v ₃₁₀ (E)	#9	3.78	—
w ₃₀₀ (E)	#210	9.80	—
w ₃₀₁ (E)	#128	8.49	—
w ₃₀₂ (E)	#64	7.89	—
w ₃₀₃ (E)	#15	2.66	—
w ₃₀₄ (E)	#15	1.96	—
w ₃₀₅ (E)	#32	2.38	—
w ₃₀₆ (E)	#32	1.56	—
w ₃₀₇ (E)	#64	6.97	—
w ₃₀₈ (E)	#64	3.50	—
Structure Excavation	m ³	1,831	1
Concrete Structures	m ³	631.4	
Protective Coat	m ²	784	
Reinforcement Bars, Epoxy Coated	kg	47,470	
Geocomposite Wall Drain	m ²	320	
Pipe Underdrains for Structures 150 mm	m	162.0	
Noise Abatement Wall Anchor Rod Assembly	Each	46	



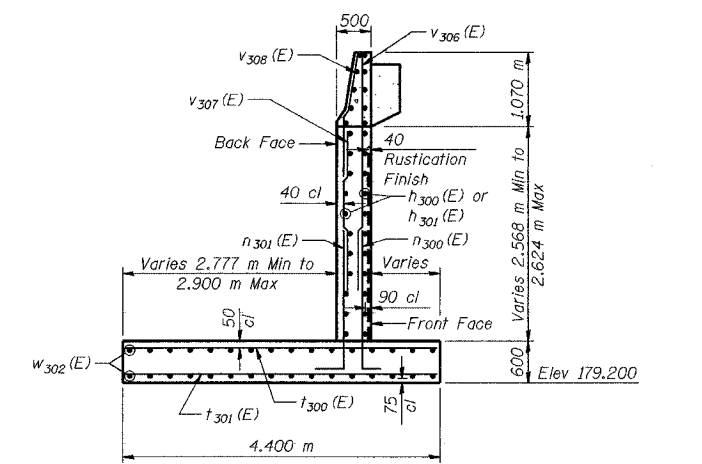
SECTION A-A



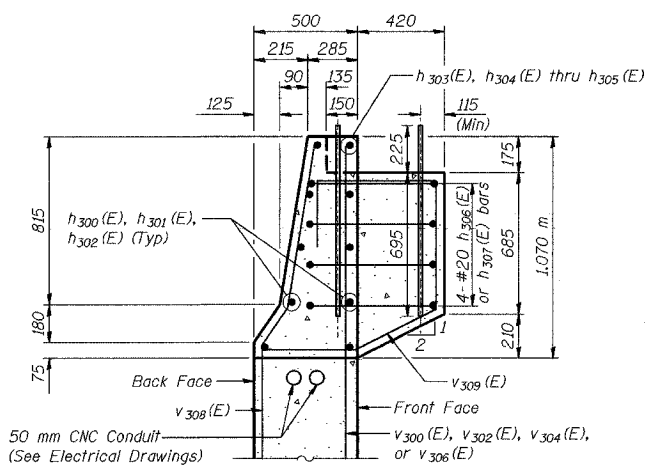
SECTION B-B



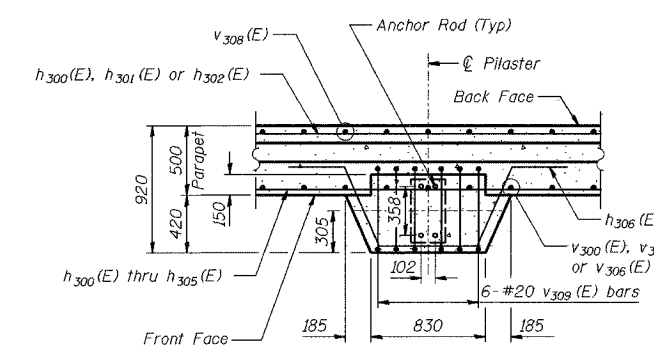
SECTION C-C



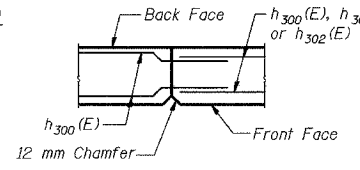
SECTION D-D



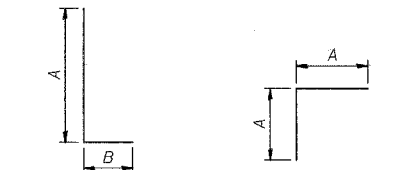
SECTION THRU PARAPET



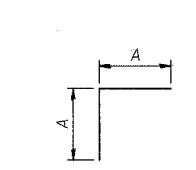
TYPICAL PILASTER SUPPORT - PLAN VIEW
(46 Locations)



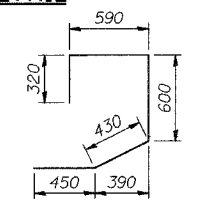
CONSTRUCTION JOINT DETAIL



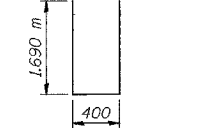
BARS n₃₀₀(E) and n₃₀₁(E)



BARS w₃₀₄(E) and w₃₀₆(E)

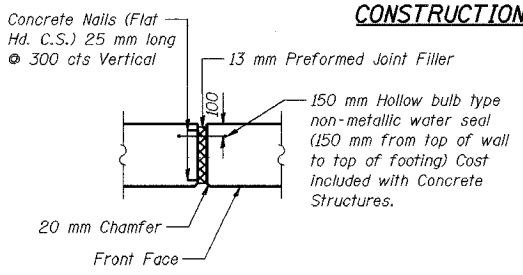


BAR v₃₀₉(E)

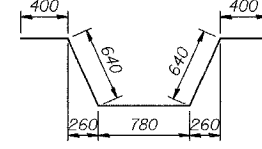


BAR v₃₁₀(E)

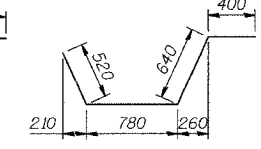
MINIMUM BAR LAPS
#15 bars = 640
#20 bars = 790



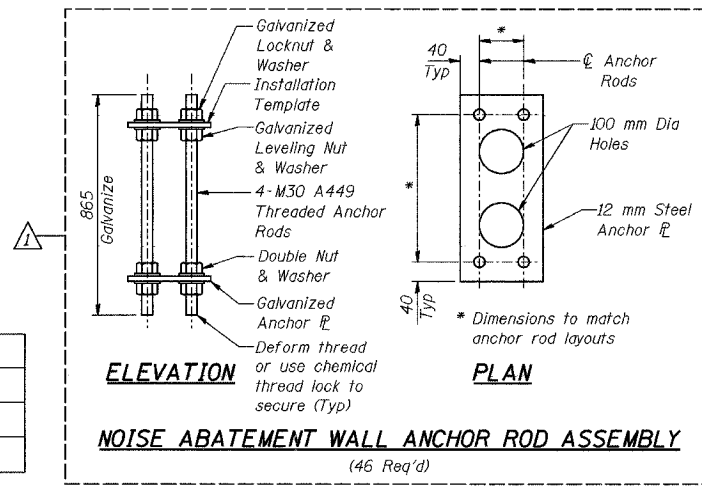
13 MM EXPANSION JOINT DETAIL



BAR h₃₀₆(E)



BAR h₃₀₇(E)



ELEVATION PLAN
NOISE ABATEMENT WALL ANCHOR ROD ASSEMBLY
(46 Req'd)

DESIGNED	KFA
CHECKED	MJW
DRAWN	MJW
CHECKED	GSP

REVISD 05-25-04 KFA [1] REVISD KFA 10-22-04

BAR DIMENSIONS

Bar	A	B
n ₃₀₀ (E)	1,58m	260
n ₃₀₁ (E)	1,58m	320
w ₃₀₃ (E)	980	1,38m
w ₃₀₄ (E)	980	---
w ₃₀₅ (E)	780	1,10m
w ₃₀₆ (E)	780	---

ILLINOIS DEPARTMENT OF TRANSPORTATION
F.A.L. ROUTE 80/94 AND U.S. ROUTE 6
LOCAL ROAD RECONSTRUCTION

WALL SECTIONS AND DETAILS
SECTION 2001-167R
COOK COUNTY
STATION 7+386.260 to STATION 7+543.382
STRUCTURE NO. 016-W853

DATE 07/05
AMERICAN CONSULTING ENGINEERS

FOR INFORMATION ONLY