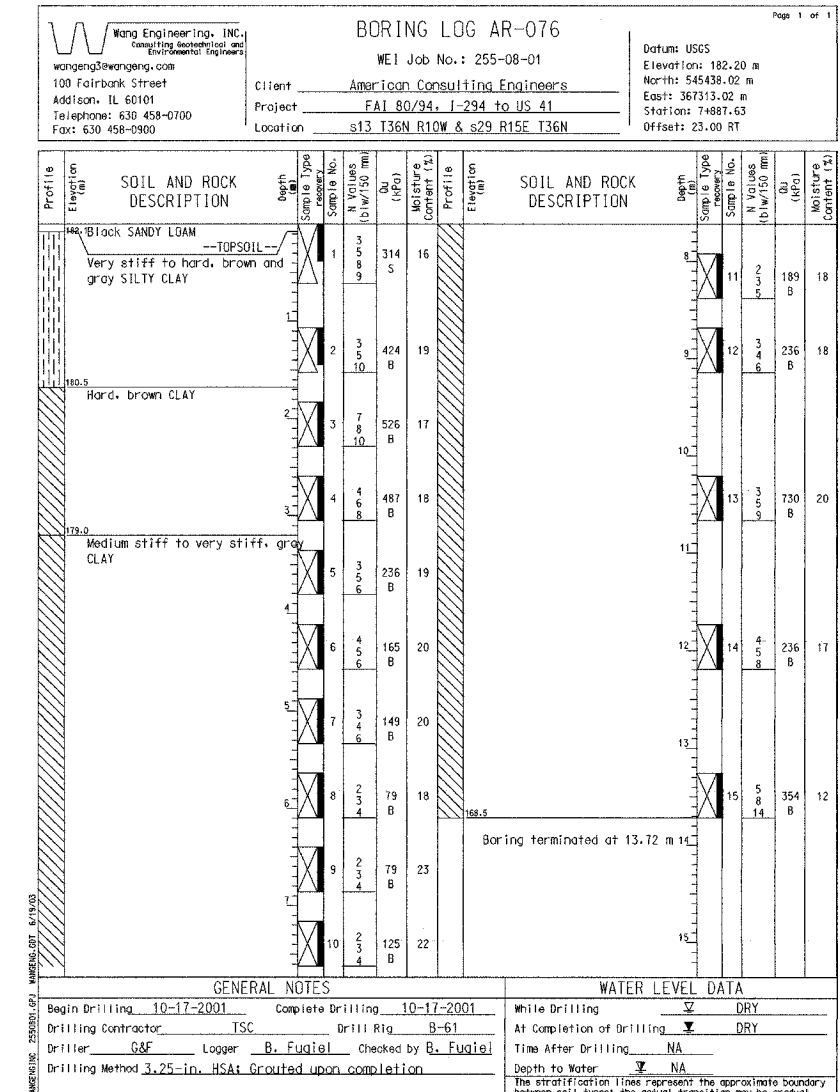
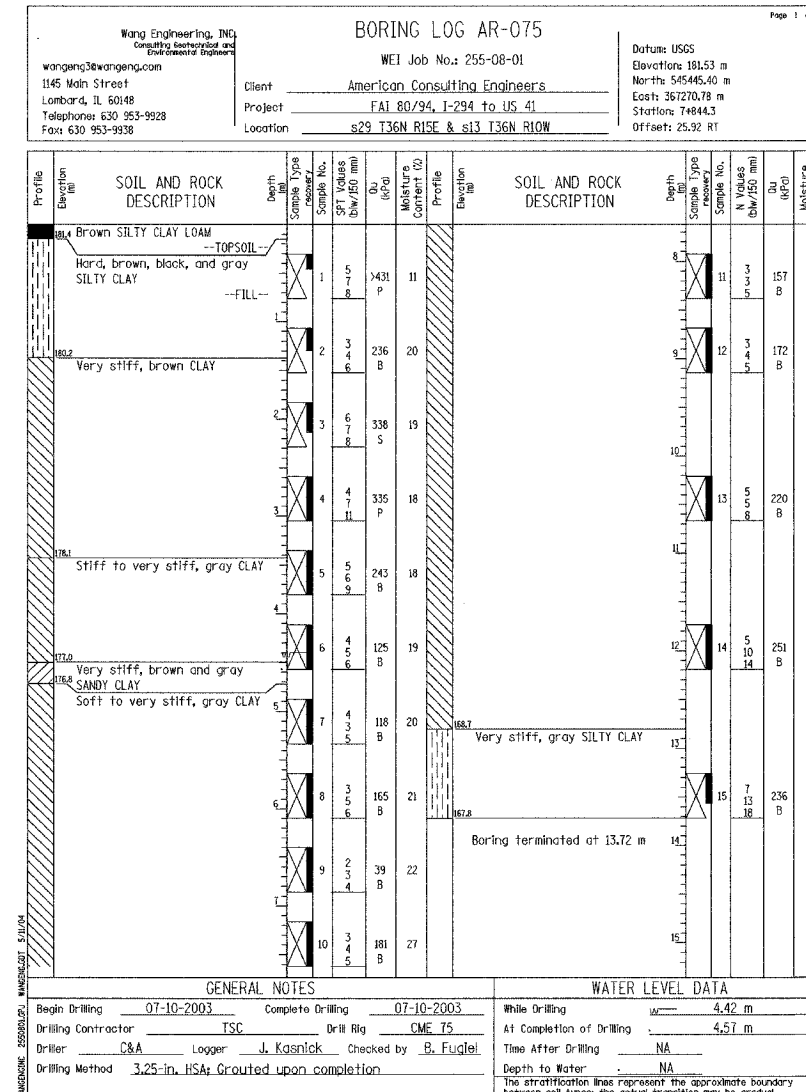
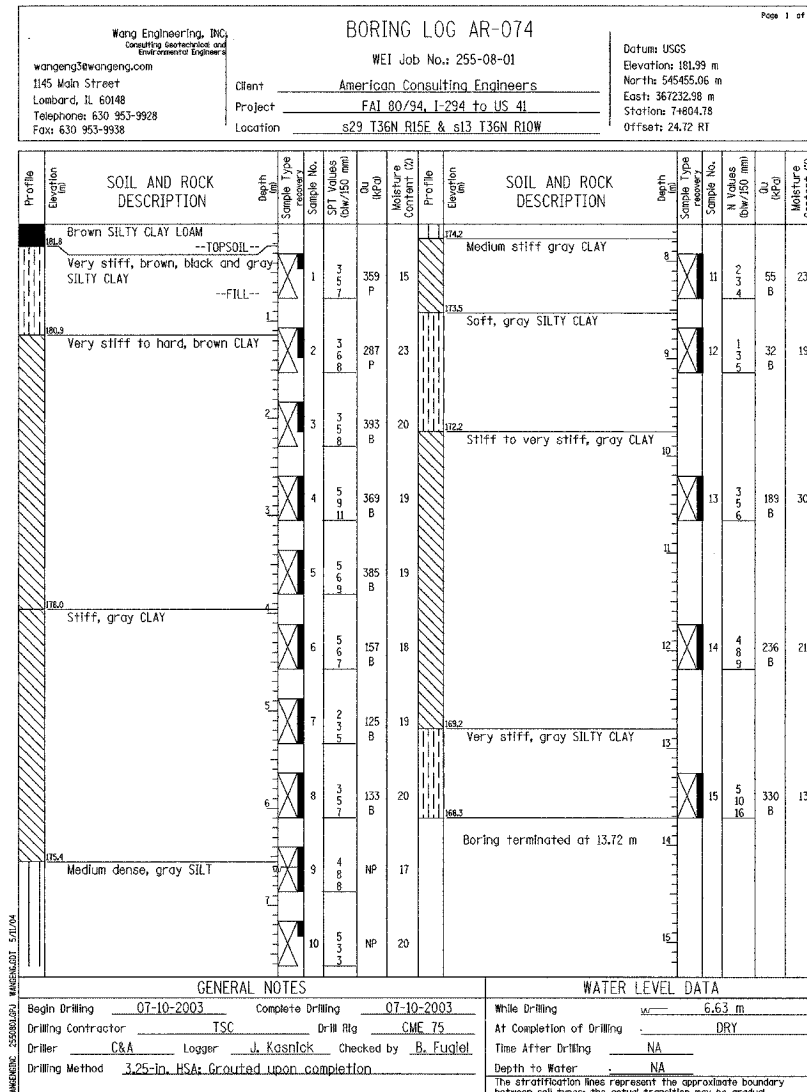


**BORING NO. AR-074 (1 OF 1)**

**BORING NO. AR-075 (1 OF 1)**

**BORING NO. AR-076 (1 OF 1)**



DESIGNED	MJW
CHECKED	KFA
DRAWN	MJB
CHECKED	GSP

ILLINOIS DEPARTMENT OF TRANSPORTATION  
I-80/94/US 6  
KINGERY-BORMANN EXPRESSWAY  
BURNHAM ROAD TO US 41

**BORING LOGS (1 OF 2)**  
SECTION 2626.2-R-1  
COOK COUNTY  
STATION 7+821.737 TO STATION 7+960.424  
STRUCTURE NO. 016-W855

DATE 07/05

**AMERICAN**  
CONSULTING ENGINEERS

FOR INFORMATION ONLY