

ROUTE NO.	SECTION	COUNTY	SHEET	SHEET	SHEET NO. S-2
P.A.L. 88/94	2626.2-R-1	LAKE COUNTY, INDIANA	1207	882	17 SHEETS
SHEET		SHEET		SHEET	
SHEET		SHEET		SHEET	

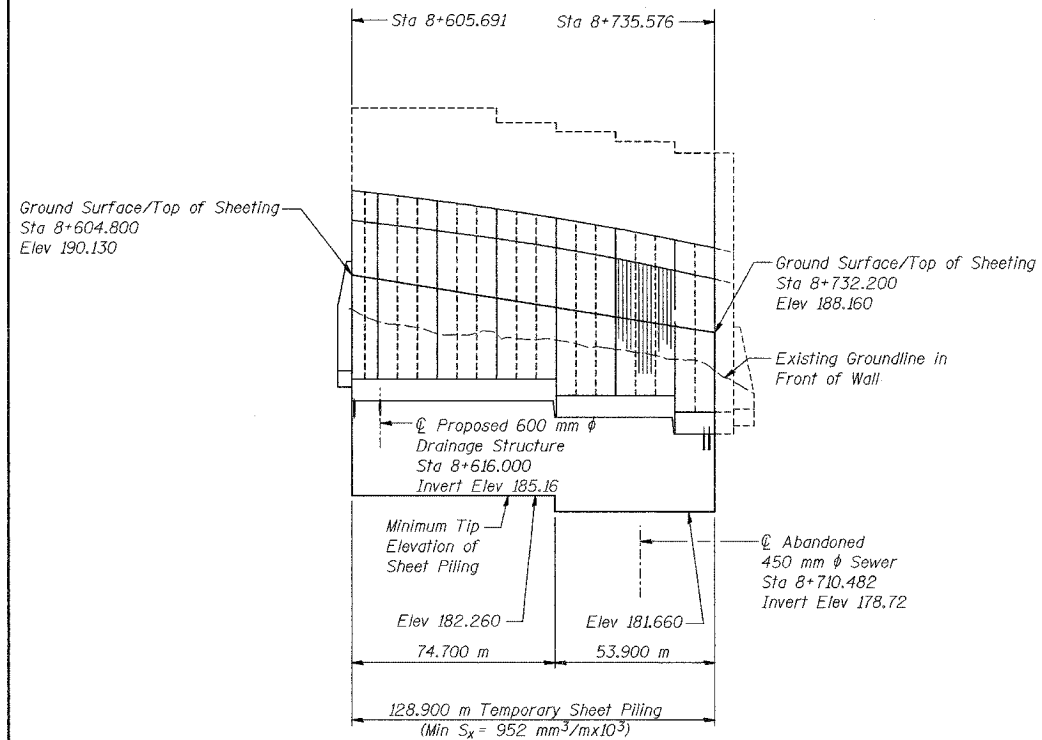
CONTRACT NO. 62114 INDOT DES. NO. 0100987

GENERAL NOTES

- Reinforcement bars shall conform to the requirements of AASHTO M 31M or M322M Grade 400.
- The Contractor shall drive 3 test piles in permanent locations spaced approximately 60 m apart, as directed by the Engineer before ordering the remainder of the piles.
- All dimensions are in millimeters (mm) except as noted.
- If the Contractor chooses to alter the temporary cantilevered sheet piling design requirements shown on the plans, a design submittal including plan details and calculations will be required for review and acceptance by the Engineer.
- All construction joints shall be bonded.
- Construction for Retaining Wall SN016-W859 will be let in separate contracts (Phase 2 and Phase 3), with each contract responsible for construction to the limits shown.
- Masonry Coating should be applied from Sta 8+605.691 to Sta 8+743.712.

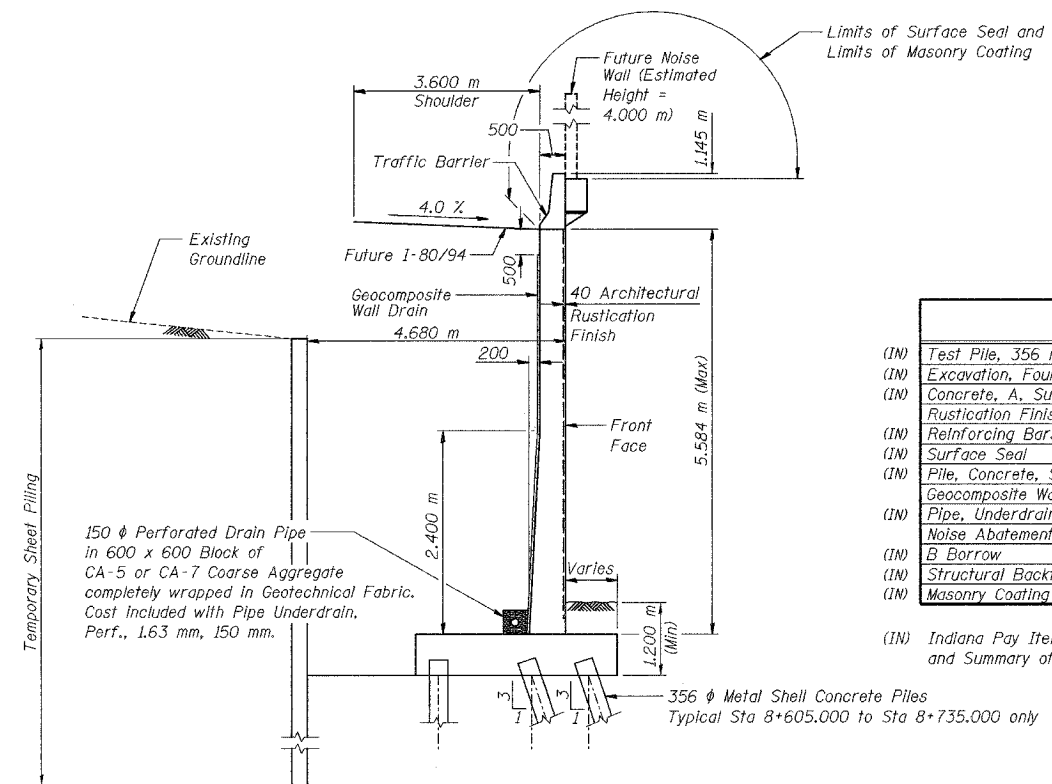
INDEX OF SHEETS

SHEET NO.	TITLE
S-1	General Plan
S-2	Index of Sheets, General Notes and Total Bill of Material
* S-3	Plan and Elevation (1 of 6)
* S-4	Plan and Elevation (2 of 6)
* S-5	Plan and Elevation (3 of 6)
* S-6	Plan and Elevation (4 of 6)
* S-7	Plan and Elevation (5 of 6)
S-8	Plan and Elevation (6 of 6)
S-9	Wall Sections and Details
S-10	Rustication Finish Details
S-11	Concrete Pile Details
S-12	Boring Logs (1 of 6)
S-13	Boring Logs (2 of 6)
S-14	Boring Logs (3 of 6)
S-15	Boring Logs (4 of 6)
S-16	Boring Logs (5 of 6)
S-17	Boring Logs (6 of 6)



* TEMPORARY SHEET PILING - ELEVATION

Estimated Area = 941 m²
The cost of Temporary Sheet Piling is included with Excavation, Foundation, Unclassified.



TYPICAL SECTION

TOTAL BILL OF MATERIAL

ITEM	UNIT	PHASE 2 QUANTITY	PHASE 3 QUANTITY
(IN) Test Pile, 356 mm	Each	3	-
(IN) Excavation, Foundation, Unclassified	m ³	1,801	213.7
(IN) Concrete, A, Substructure	m ³	849.1	64.8
Rustication Finish	m ²	647	50
(IN) Reinforcing Bars, Epoxy Coated	kg	59,570	3,980
(IN) Surface Seal	L Sum	0.06	0.01
(IN) Pile, Concrete, Steel Shell Encased, 6.35 mm, 356 mm	m	2,834.0	156.0
Geocomposite Wall Drain	m ²	620	47
(IN) Pipe, Underdrain, Perf., 1.63 mm, 150 mm	m	145.0	14.0
Noise Abatement Wall Anchor Rod Assembly	Each	37	3
(IN) B Borrow	m ³	-	24.2
(IN) Structural Backfill	m ³	-	203.7
(IN) Masonry Coating	L Sum	-	0.03

(IN) Indiana Pay Items, denoted by "(Indiana)" in Special Provisions and Summary of Quantities.

DESIGNED	KFA
CHECKED	BPS
DRAWN	MJB
CHECKED	GSP

ILLINOIS DEPARTMENT OF TRANSPORTATION
I-80/94/US 6
KINGERY-BORMAN EXPRESSWAY
BURNHAM ROAD TO US 41
**INDEX OF SHEETS, GENERAL NOTES
AND TOTAL BILL OF MATERIAL**
SECTION 2626.2-R-1
LAKE COUNTY, INDIANA
STATION 8+735.576 TO STATION 8+748.936
STRUCTURE NO. 016-W859
DATE 09/05

AMERICAN
CONSULTING ENGINEERS

* FOR INFORMATION ONLY