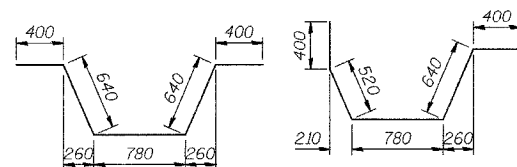
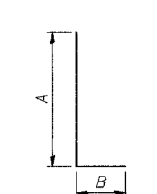


CONTRACT NO. 62114 INDOT DES. NO. 0100987

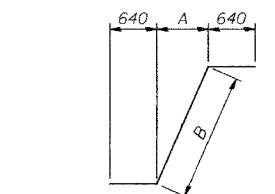


BAR h 313 (E)

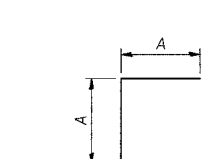
BAR h 314 (E)



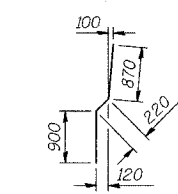
BARS n 300 (E) thru n 302 (E)



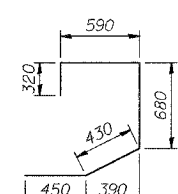
BARS w 303 (E), w 305 (E) or w 307 (E)



BARS w 304 (E), w 306 (E) or w 308 (E)



BARS v 302 (E)



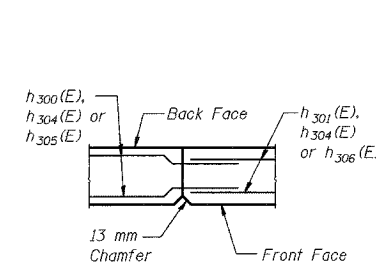
BAR v 307 (E)

BAR DIMENSIONS

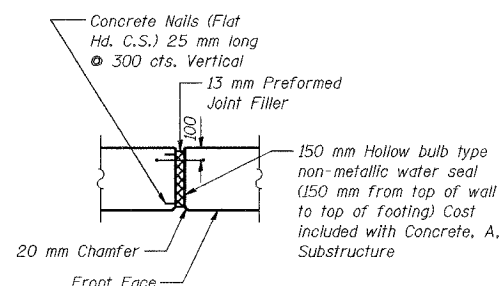
| Bar       | A      | B      |
|-----------|--------|--------|
| n 300 (E) | 2.46 m | 260    |
| n 301 (E) | 3.42 m | 320    |
| n 302 (E) | 1.22 m | 260    |
| w 303 (E) | 1.27 m | 1.80 m |
| w 304 (E) | 1.27 m | -      |
| w 305 (E) | 970    | 1.37 m |
| w 306 (E) | 970    | -      |
| w 307 (E) | 870    | 1.23 m |
| w 308 (E) | 870    | -      |

BILL OF MATERIAL

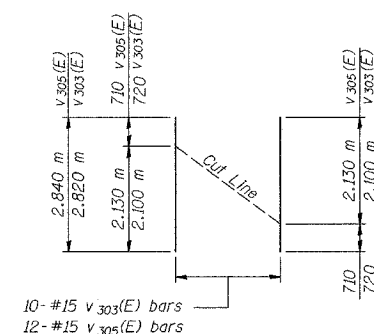
| Bar  | No.            | Size | Length (m) | Shape |
|--|----------------|------|------------|-------|
| h 300 (E)  | 37             | #15  | 9.15       | —     |
| h 301 (E)  | 240            | #15  | 7.10       | —     |
| h 302 (E)  | 27             | #15  | 2.30       | —     |
| h 303 (E)  | 12             | #15  | 1.10       | —     |
| h 304 (E)  | 445            | #15  | 7.84       | —     |
| h 305 (E)  | 39             | #15  | 5.29       | —     |
| h 306 (E)  | 39             | #15  | 4.55       | —     |
| h 307 (E)  | 3              | #15  | 1.94       | —     |
| h 308 (E)  | 3              | #15  | 2.20       | —     |
| h 309 (E)  | 16             | #15  | 4.80       | —     |
| h 310 (E)  | 2              | #15  | 3.39       | —     |
| h 311 (E)  | 18             | #15  | 5.60       | —     |
| h 312 (E)  | 2              | #15  | 3.94       | —     |
| h 313 (E)  | 152            | #20  | 2.86       | —     |
| h 314 (E)  | 8              | #20  | 2.74       | —     |
| h 319 (E)  | 16             | #15  | 0.60       | —     |
| h 320 (E)  | 40             | #15  | 2.11       | —     |
| n 300 (E)  | 486            | #15  | 2.72       | —     |
| n 301 (E)  | 952            | #20  | 3.74       | —     |
| n 302 (E)  | 74             | #15  | 1.48       | —     |
| t 300 (E)  | 491            | #25  | 3.80       | —     |
| t 301 (E)  | 704            | #20  | 3.80       | —     |
| t 302 (E)  | 74             | #15  | 1.70       | —     |
| v 300 (E)  | 486            | #15  | 4.65       | —     |
| v 301 (E)  | 486            | #20  | 2.70       | —     |
| v 302 (E)  | 486            | #20  | 1.99       | —     |
| v 303 (E)  | 10             | #15  | 2.82       | —     |
| v 304 (E)  | 12             | #15  | 2.12       | —     |
| v 305 (E)  | 12             | #15  | 2.84       | —     |
| v 306 (E)  | 14             | #15  | 2.15       | —     |
| v 307 (E)  | 240            | #20  | 2.47       | —     |
| w 300 (E)  | 196            | #15  | 8.48       | —     |
| w 301 (E)  | 252            | #15  | 7.82       | —     |
| w 302 (E)  | 56             | #15  | 8.52       | —     |
| w 303 (E)  | 14             | #15  | 3.08       | —     |
| w 304 (E)  | 14             | #15  | 2.54       | —     |
| w 305 (E)  | 28             | #15  | 2.65       | —     |
| w 306 (E)  | 28             | #15  | 1.94       | —     |
| w 307 (E)  | 14             | #15  | 2.51       | —     |
| w 308 (E)  | 14             | #15  | 1.74       | —     |
| w 309 (E)  | 14             | #15  | 4.80       | —     |
| w 310 (E)  | 14             | #15  | 5.60       | —     |
| Test Pile, 356 mm                                    | Each           |      | 4          |       |
| Excavation, Foundation, Unclassified                 | m <sup>3</sup> |      | 2,475.5    |       |
| Concrete, A, Substructure                            | m <sup>3</sup> |      | 791.6      |       |
| Reinforcing Bars, Epoxy Coated                       | kg             |      | 53,100     |       |
| Surface Seal   | L Sum          |      | 0.02       |       |
| Pile, Concrete, Steel Shell Encased, 6.35 mm, 356 mm | m              |      | 2,670.0    |       |
| Geocomposite Wall Drain                              | m <sup>2</sup> |      | 529        |       |
| Pipe, Underdrain, Perf., 1.63 mm, 150 mm             | m              |      | 151.0      |       |
| Noise Abatement Wall Anchor Rod Assembly             | Each           |      | 40         |       |
| B Borrow   | m <sup>3</sup> |      | 276.3      |       |
| Structural Backfill                                  | m <sup>3</sup> |      | 1762.3     |       |
| Masonry Coating                                      | L Sum          |      | 0.04       |       |



CONSTRUCTION JOINT DETAIL



13 MM EXPANSION JOINT DETAIL



FIELD CUTTING DIAGRAM

Order v 303 (E) or v 305 (E) bars full length. Cut as shown and use remainder of bars in opposite face.

|          |     |
|----------|-----|
| DESIGNED | KFA |
| CHECKED  | BPS |
| DRAWN    | MJB |
| CHECKED  | GSP |

NOTES:

See Sheet S-10 for Wall and Parapet Sections and Anchor Rod Assembly Details  
See Sheet S-12 for Rustication details.  
Reinforcement bars designated (E) shall be epoxy coated.  
All dimensions are in millimeters (mm) except as noted.  
See Typical Section on Sheet S-2 for Drainage Details and Surface Seal Limits.

ILLINOIS DEPARTMENT OF TRANSPORTATION  
I-80/94/US 6  
KINGERY-BORMAN EXPRESSWAY  
BURNHAM ROAD TO US 41  
WALL SECTIONS AND DETAILS (2 OF 2)  
SECTION 2626.2-R-2  
LAKE COUNTY, INDIANA  
STATION 8+581.326 TO STATION 8+733.961  
STRUCTURE NO. 016-W860  
DATE 09/05  
**AMERICAN**  
CONSULTING ENGINEERS