

ROUTE NO.	SECTION	COUNTY	SHEETS	SHEET	SHEET NO. S-2
P.A.L. 88/74	2626.2-R-2	LAKE COUNTY, INDIANA	1207	918	29 SHEETS
BILLINGS		FED. AID PROJECT-			

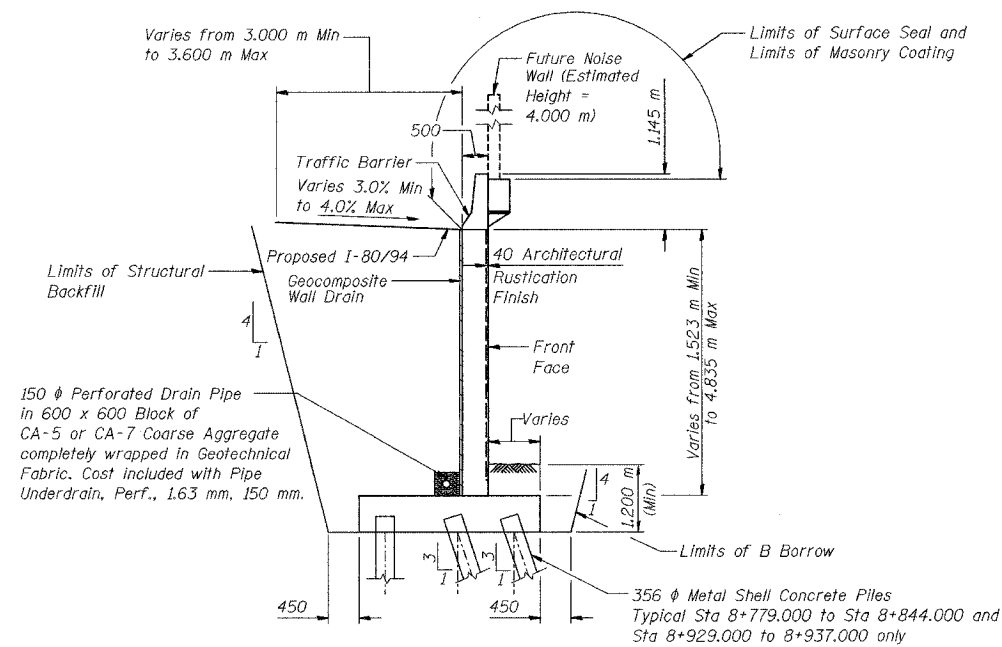
CONTRACT NO. 62114 INDOT DES. NO. 0100987

INDEX OF SHEETS

SHEET NO.	TITLE
S-1	General Plan
S-2	Index of Sheets, General Notes and Total Bill of Material
S-3	Plan and Elevation (1 of 13)
S-4	Plan and Elevation (2 of 13)
S-5	Plan and Elevation (3 of 13)
S-6	Plan and Elevation (4 of 13)
S-7	Plan and Elevation (5 of 13)
S-8	Plan and Elevation (6 of 13)
S-9	Plan and Elevation (7 of 13)
S-10	Plan and Elevation (8 of 13)
S-11	Plan and Elevation (9 of 13)
S-12	Plan and Elevation (10 of 13)
S-13	Plan and Elevation (11 of 13)
S-14	Plan and Elevation (12 of 13)
S-15	Plan and Elevation (13 of 13)
S-16	Parapet and Anchorage Slab (1 of 3)
S-17	Parapet and Anchorage Slab (2 of 3)
S-18	Parapet and Anchorage Slab (3 of 3)
S-19	Wall Sections and Details (1 of 2)
S-20	Wall Sections and Details (2 of 2)
S-21	Rustication Finish Details
S-22	Concrete Pile Details
S-23	Boring Logs (1 of 7)
S-24	Boring Logs (2 of 7)
S-25	Boring Logs (3 of 7)
S-26	Boring Logs (4 of 7)
S-27	Boring Logs (5 of 7)
S-28	Boring Logs (6 of 7)
S-29	Boring Logs (7 of 7)

GENERAL NOTES

1. Reinforcement bars shall conform to the requirements of AASHTO M 31M or M322M Grade 400.
2. The Contractor shall drive 3 test piles in permanent locations spaced approximately 60 m apart, as directed by the Engineer before ordering the remainder of the piles.
3. All dimensions are in millimeters (mm) except as noted.
4. All construction joints shall be bonded.
5. Removal of Existing Mechanically Stabilized Earth Wall required from Sta 9+052.680 to Sta 9+169.310. See Roadway Cross Sections.



TYPICAL SECTION

TOTAL BILL OF MATERIAL

ITEM	UNIT	QUANTITY
(IN) Test Pile, 356 mm	Each	3
(IN) Excavation, Foundation, Unclassified	m ³	1,879.3
(IN) Concrete, A, Substructure	m ³	1,635.6
Rustication Finish	m ²	758
(IN) Reinforcing Bars, Epoxy Coated	kg	127,720
(IN) Surface Seal	L	0.08
(IN) Pile, Concrete, Steel Shell Encased, 6.35 mm, 356 mm	m	1,421.5
Geocomposite Wall Drain	m ²	700
(IN) Pipe, Underdrain, Perf., 1.63 mm, 150 mm	m	282.7
Noise Abatement Wall Anchor Rod Assembly	Each	43
(IN) Overhead Sign Structure Span Anchor Rod Assembly	Each	2
(IN) B Borrow	m ³	620.3
(IN) Structural Backfill	m ³	1,997.7
Remove Mechanically Stabilized Earthwall	m ²	161
(IN) Masonry Coating	L	0.20

(IN) Indiana Pay Items, denoted by "Indiana" in Special Provisions and Summary of Quantities.

DESIGNED	KFA
CHECKED	BPS
DRAWN	MJB
CHECKED	GSP

ILLINOIS DEPARTMENT OF TRANSPORTATION
I-80/94/US 6
KINGERY-BORMAN EXPRESSWAY
BURNHAM ROAD TO US 41
INDEX OF SHEETS, GENERAL NOTES
AND TOTAL BILL OF MATERIAL
SECTION 2626.2-R-2
LAKE COUNTY, INDIANA
STATION 8+774.073 TO STATION 9+227.203
STRUCTURE NO. 016-W861
DATE 09/05

AMERICAN
CONSULTING ENGINEERS