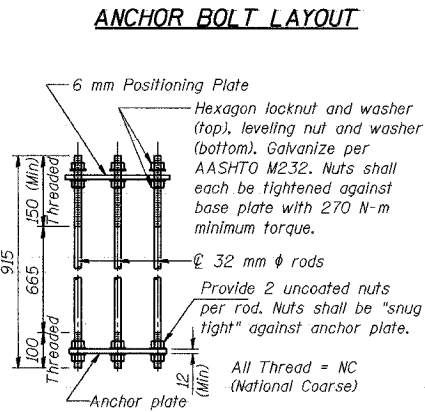
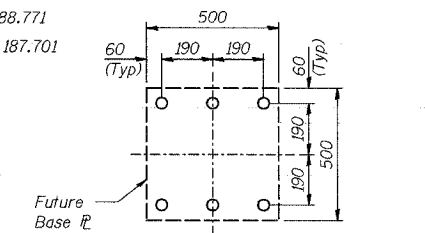
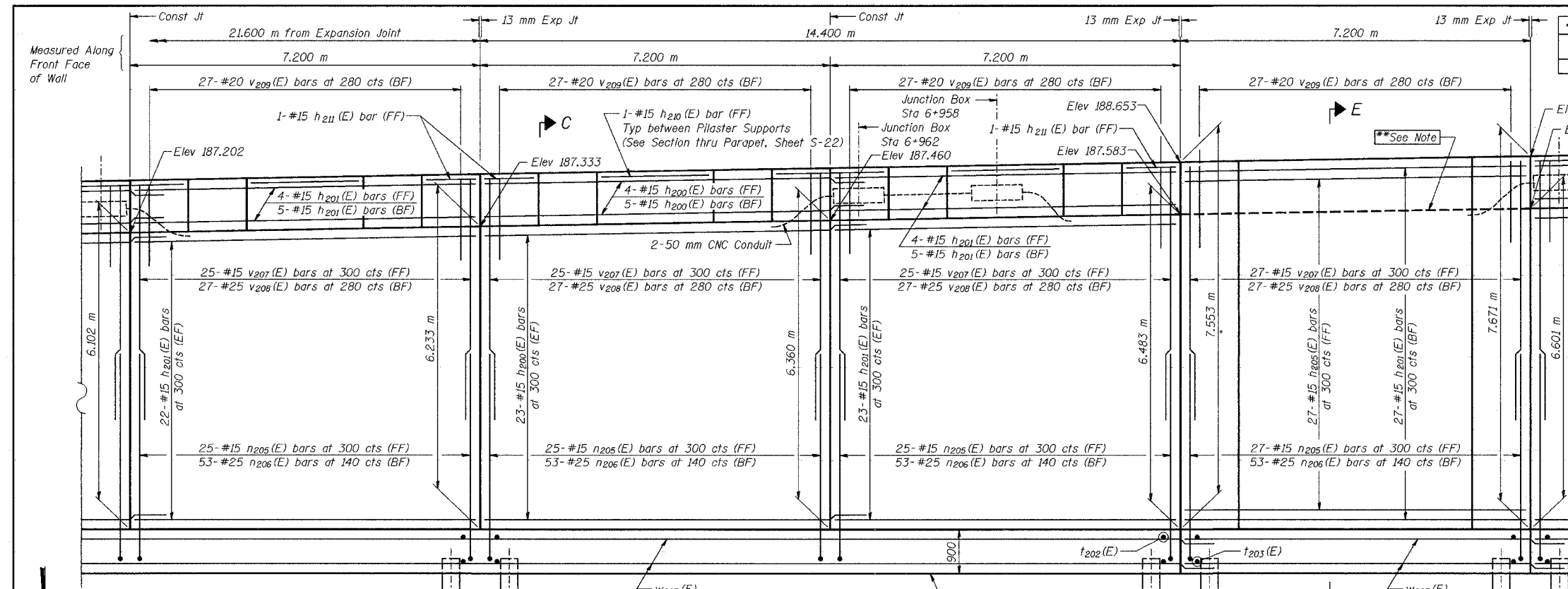


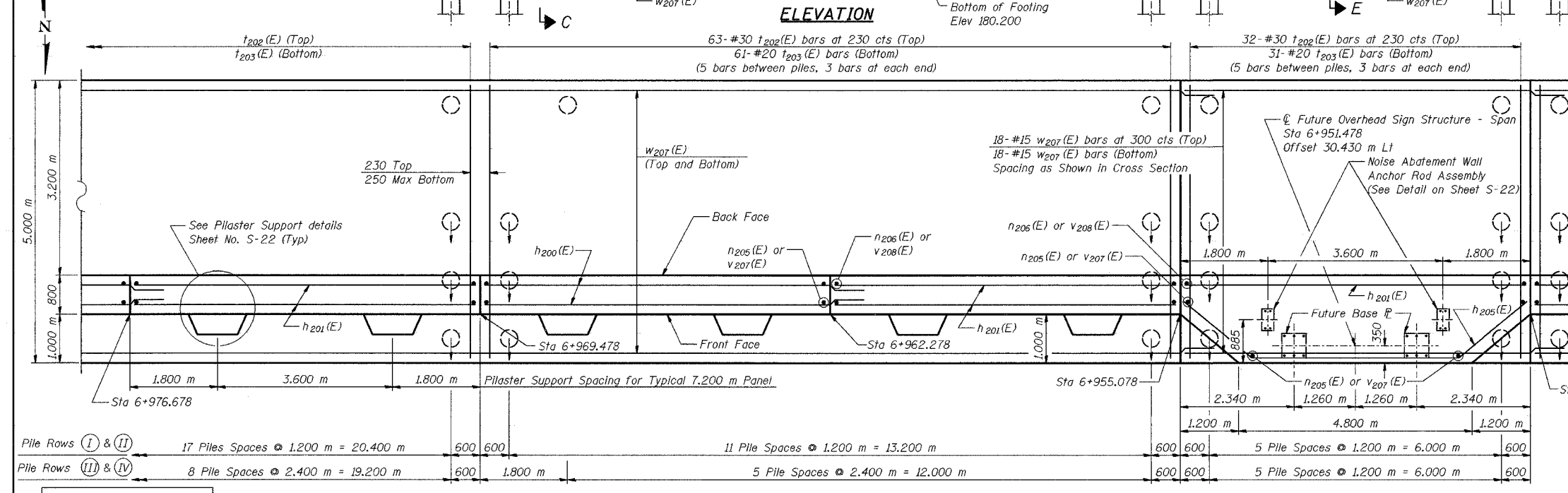
ROUTE NO.	SHEET	COUNTY	DATE	SHEET NO.
F.A.I.	1207	COOK	1207	999
REV.				
CONTRACT No. 62114				



**ANCHOR ROD DETAIL**  
(Overhead Sign Structure - Span, Anchor Rod Assembly, 2 Req'd)

**ANCHOR ROD NOTE:**  
Anchor rods shall conform to AASHTO M314M Grade 250 or 380 (36 or 55) and meet Charpy V-Notch (CVN) energy of 20 J at 5°C. Galvanize per AASHTO M232. No welding shall be permitted on rods.

**NOTES:**  
See Sheet S-22 for Section C-C, Section E-E, Pilaster Support details, and Bill of Material.  
See Sheet S-23 for Rustication details and Expansion Joint Detail.  
Stations are referenced to § I-80/94.  
Reinforcement bars designated (E) shall be epoxy coated.  
All dimensions are in millimeters (mm) except as noted.  
See Electrical Drawings for Junction Box and Conduit Details.



DESIGNED	BHS
CHECKED	KFA
DRAWN	MJB
CHECKED	GSP

**\*\*NOTE:**  
Construction Joint 1.070 m below top of parapet shall not be continued thru section of wall supporting the cantilever sign. Finished appearance of front face of wall in this section shall be the same as that in the adjacent sections of wall.

**FOOTING PLAN**

**MINIMUM BAR LAPS**  
#15 bars = 640  
#20 bars = 790  
#25 bars = 1320

**LEGEND**  
BF = Back Face  
FF = Front Face  
EF = Each Face

ILLINOIS DEPARTMENT OF TRANSPORTATION  
F.A.I. ROUTE 80/94 AND U.S. ROUTE 6  
LOCAL ROAD RECONSTRUCTION

**PLAN AND ELEVATION (15 OF 19)**  
**SECTION 2001-167R**  
**COOK COUNTY**  
**STATION 6+850.000 TO STATION 7+379.000**  
**STRUCTURE NO. 016-W874**  
DATE 07/05

**AMERICAN**  
CONSULTING ENGINEERS

FOR INFORMATION ONLY