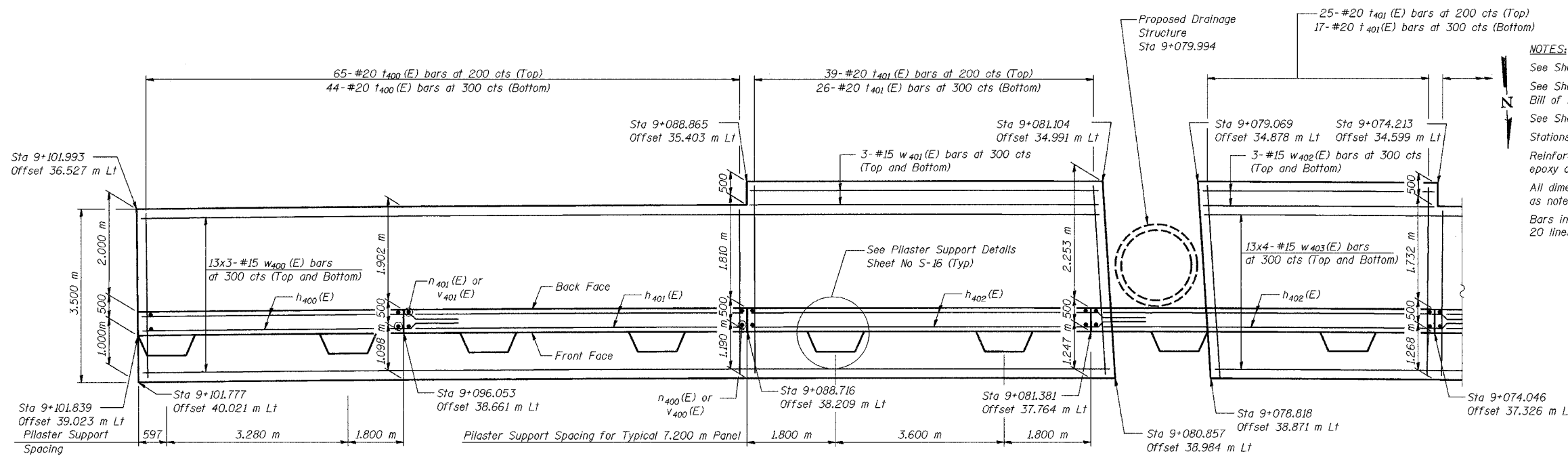


ELEVATION



FOOTING PLAN

NOTES:

See Sheet S-16 for Section A-A and Section B-B.
See Sheet S-17 for Expansion Joint Detail and Bill of Material.
See Sheet S-18 for Rustication details.
Stations are referenced to \odot I-80/94.
Reinforcement bars designated (E) shall be epoxy coated.
All dimensions are in millimeters (mm) except as noted.
Bars indicated thus 20 x 3-#15 etc. indicates 20 lines of bars with 3 lengths per line.

MINIMUM BAR LAPS

- #15 bars = 640
- #20 bars = 790

LEGEND

- BF = Back Face
- FF = Front Face
- EF = Each Face

DESIGNED	KFA
CHECKED	BPS
DRAWN	MJB
CHECKED	GSP

ILLINOIS DEPARTMENT OF TRANSPORTATION
I-80/94/US 6
KINGERY-BORMAN EXPRESSWAY
BURNHAM ROAD TO US 41

PLAN AND ELEVATION (1 OF 13)
SECTION 2626.2-R-2
LAKE COUNTY, INDIANA
STATION 8+762.750 TO STATION 9+101.839
STRUCTURE NO. 016-W915
DATE 09/05

AMERICAN
CONSULTING ENGINEERS