

*** TEMPORARY SHEET PILING - ELEVATION**

Estimated Area = 1,985 m²
 The cost of Temporary Sheet Piling is included with Excavation, Foundation, Unclassified.

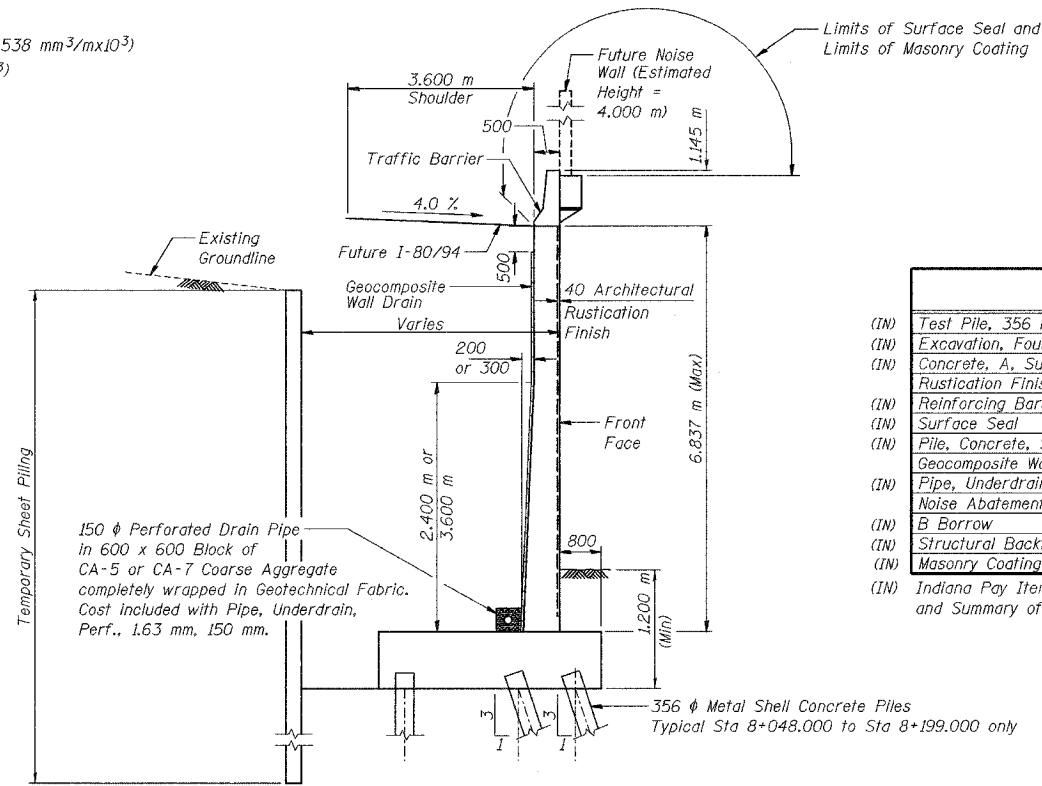
DESIGNED	KFA
CHECKED	BPS
DRAWN	MJB
CHECKED	GSP

GENERAL NOTES

- Reinforcement bars shall conform to the requirements of AASHTO M 31M or M322M Grade 400.
- The Contractor shall drive 4 test piles in permanent locations spaced approximately 60 m apart, as directed by the Engineer before ordering the remainder of the piles.
- All dimensions are in millimeters (mm) except as noted.
- If the Contractor chooses to alter the temporary cantilevered sheet piling design requirements shown on the plans, a design submittal including plan details and calculations will be required for review and acceptance by the Engineer.
- All construction joints shall be bonded.
- Construction for Retaining Wall SNO16-W922 will be let in separate contracts (Phase 2 and Phase 3), with each contract responsible for construction to the limits shown.
- Masonry Coating should be applied from Sta 7+960.424 to Sta 8+207.563

INDEX OF SHEETS

SHEET NO.	TITLE
S-1	General Plan
S-2	Index of Sheets, General Notes and Total Bill of Material
* S-3	Plan and Elevation (1 of 11)
* S-4	Plan and Elevation (2 of 11)
* S-5	Plan and Elevation (3 of 11)
* S-6	Plan and Elevation (4 of 11)
* S-7	Plan and Elevation (5 of 11)
* S-8	Plan and Elevation (6 of 11)
* S-9	Plan and Elevation (7 of 11)
* S-10	Plan and Elevation (8 of 11)
* S-11	Plan and Elevation (9 of 11)
* S-12	Plan and Elevation (10 of 11)
S-13	Plan and Elevation (11 of 11)
S-14	Wall Sections and Details
S-15	Rustication Finish Details
S-16	Concrete Pile Details
S-17	Boring Logs (1 of 3)
S-18	Boring Logs (2 of 3)
S-19	Boring Logs (3 of 3)



TYPICAL SECTION

TOTAL BILL OF MATERIAL

ITEM	UNIT	PHASE 2 QUANTITY	PHASE 3 QUANTITY
(IN) Test Pile, 356 mm	Each	4	-
(IN) Excavation, Foundation, Unclassified	m ³	4,173	491.4
(IN) Concrete, A, Substructure	m ³	1,550.7	99.8
(IN) Rustication Finish	m ²	1,061	76
(IN) Reinforcing Bars, Epoxy Coated	kg	101,320	6,190
(IN) Surface Seal	L Sum	0.11	0.01
(IN) Pile, Concrete, Steel Shell Encased, 6.35 mm, 356 mm	m	4,014.0	244.0
(IN) Geocomposite Wall Drain	m ²	1,013	73
(IN) Pipe, Underdrain, Perf., 1.63 mm, 150 mm	m	246.0	17.7
(IN) Noise Abatement Wall Anchor Rod Assembly	Each	66	3
(IN) B Borrow	m	-	76.7
(IN) Structural Backfill	m ³	-	479.3
(IN) Masonry Coating	L Sum	-	0.06

(IN) Indiana Pay Items, denoted by "(Indiana)" in Special Provisions and Summary of Quantities.

ILLINOIS DEPARTMENT OF TRANSPORTATION
 I-80/94/US 6
 KINGERY-BORMAN EXPRESSWAY
 BURNHAM ROAD TO US 41
**INDEX OF SHEETS, GENERAL NOTES
 AND TOTAL BILL OF MATERIAL**
 SECTION 2626.2-R-1
 LAKE COUNTY, INDIANA
 STATION 8+199.354 TO STATION 8+215.315
 STRUCTURE NO. 016-W922

DATE 09/05



* FOR INFORMATION ONLY