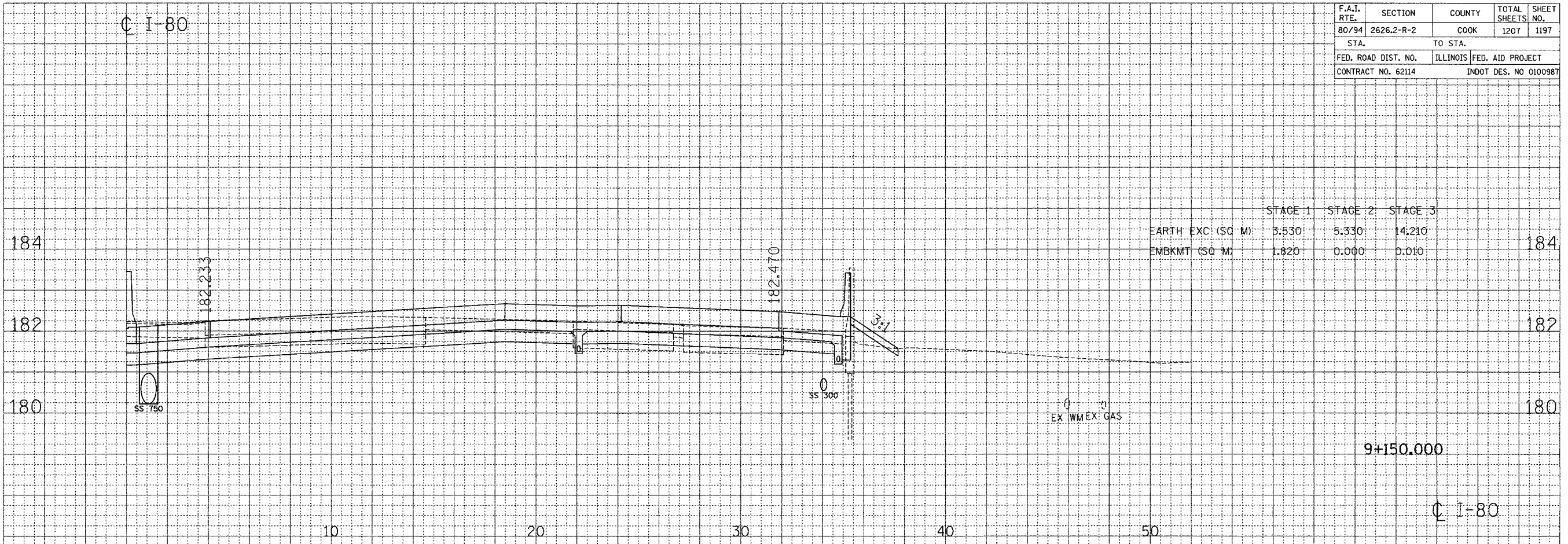


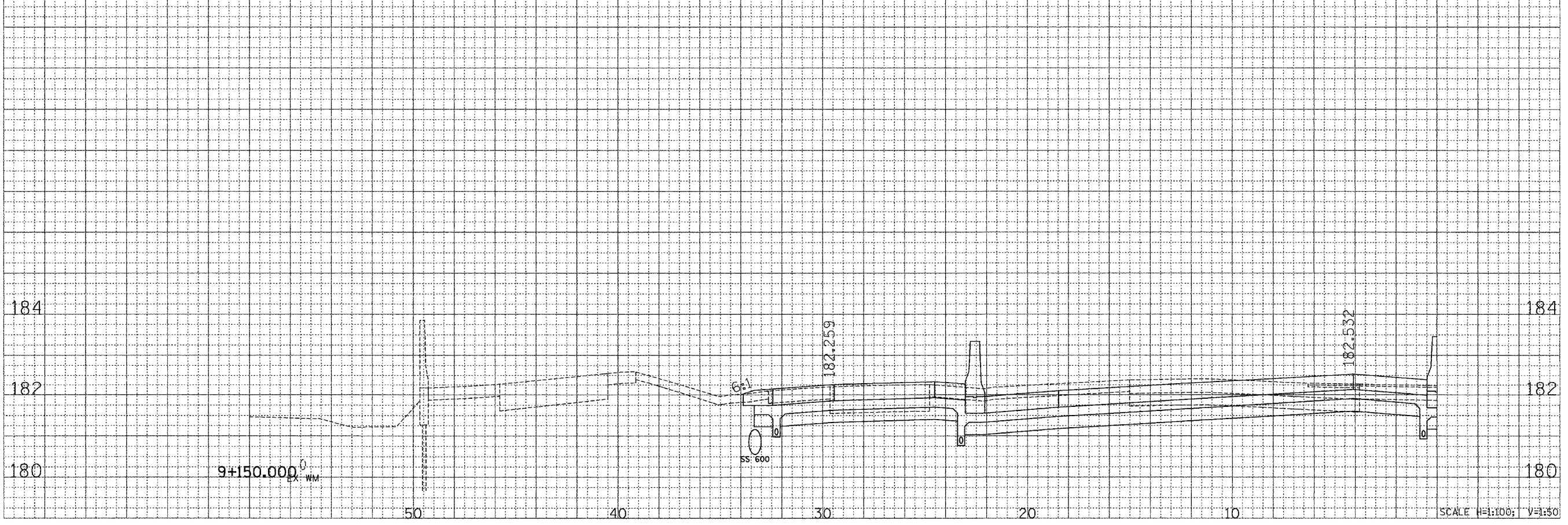
F.A.I. RTE.	SECTION	COUNTY	TOTAL SHEETS	SHEET NO.
80/94	2626.2-R-2	COOK	1207	1197
STA.		TO STA.		
FED. ROAD DIST. NO.		ILLINOIS	FED. AID PROJECT	
CONTRACT NO. 62114		INDOT DES. NO 0100987		

FINAL SURVEY	BY	DATE
NOTED BOOK		
NO.		



	STAGE 1	STAGE 2	STAGE 3	
EARTH EXC (SQ M)	3.530	5.330	14.210	184
EMBKMT (SQ M)	1.820	0.000	0.010	182

ORIGINAL SURVEY	BY	DATE
NOTED BOOK		
NO.		



CROSS SECTION - I-80/94/US 6

Small vertical text at the bottom right corner, likely a file path or version number.