

QMP Package  
Import Template Instructions

The instructions on pages 2 & 3 will help you Import and Update All Templates from previous QMP Packages. Page 4 outlines how to import your Agg History Database. Pages 5-11 provide instructions on how to individually import Templates for the various Programs listed below.

Page 2 ..... Import All Templates from older Package

Page 3 ..... Update All Templates

Page 4 ..... Import 2024 Agg History Database

*The next pages are for individually importing previous Package Templates and do not need to be done if Importing All instructions from above where followed.*

Page 5 ..... Import HMA Daily Plant Package Templates

Page 7 ..... Import Aggregate Templates

Page 9 ..... Import Density Templates

Page 11 ..... Import Concrete Field & Strength Reports

# QMP Package Import Template Instructions

## Instructions for IMPORTING All (Previous QMP/QCQA Package) Templates (This is used only when the Newer 2016 QCQA Package is installed)

After installing the new QMP Package 2025 or QMP Package 2025 updates you will want to get all the previous Templates for the various Programs imported into the new version of the QMP Package.

The first thing you want to do is open the 2025 QMP Package Menu and navigate to a worksheet tab called “Tools Menu” There you will find the necessary steps to import your older Templates into the new 2025 Package.

Step 1: You must choose the location of your older Templates by clicking the Browse... button. Be sure to select a “Templates” folder in any of the various AGG, HMA or PCC programs. *In this step you are telling the Program where your older Templates are to be copied from.*

Step 2: Select the Product AGG, HMA or PCC and choose the proper Template (i.e. Density, Field Strengths, and Stockpiles) *in this step you are telling the Program where to copy the old Templates to.*

Step 3: Click Import! (Read note below)

**Import Older Templates to New QCQA Package**

**STEP 1: Choose Location of Templates by clicking Browse**  
(Only select Templates from older versions of the QCQA Package for Step 1)  
Location:

**STEP 2: Select Product and Template Location**  
(This is for the Newly Installed QCQA Package for Template import)  
(A) Select Product   
(B) Choose Template

**STEP 3: Import and Update Templates**

**Install Add-ins**  
Click the box to Install TeamViewerQS.exe

**QCQA Package Documents**  
QCQA Package Import Templates Instructions 2014.doc  
QCQA Package Installation Instructions 2014.doc  
QCQA Package Update Documentation.xlsx

**Import Agg History Database from previous version.**  
Choose Location of HISTORY folder by clicking Browse  
(Select the HISTORY folder from the previous year's QCQA Package)  
Location:

Note \*\* You will be prompted to update the newly imported Templates. You may choose No but you *must* update your Templates at some point to ensure that you are using the latest version. If you chose No then proceed to page 3 titled “Update All Templates” when you are ready to update.

# QMP Package Import Template Instructions

## Instructions for Updating All Templates (This is used only when there is an Update to the Package)

When the QMP Package is updated (or you imported previous Templates without updating i.e. Page 2) all Templates must be updated to reflect any changes made to the Master File during the Update process. All Programs that have Templates saved will have an Update Templates on the Main QMP Package Menu as seen below. Simply click the Update Templates for the Programs used.

**QCQA DAILY TESTING AND SAMPLING MENU FOR HMA** ⓘ

March 31, 2015 6:10 PM      Menu Ver. 11.00-03.20.15

- LAB MIXTURE DESIGNS**
  - Create Mix Design
  - Open Mix Design
- HAMBURG WHEEL SAMPLING**
  - Create WT Report
  - Open WT Report
  - Hamburg Lab ID Sheet
  - Set Up WT Computer
- NUC CORE CORRELATION**
  - Create Correlation
  - Open Correlation
- QCQA CONTROL CHARTS**
  - Create Control Chart
  - Open Control Chart
- HMA PANT WORKSHEETS**
  - Create Plant Template
  - Open Plant Template
  - Open Plant Report
  - Open Mix Tracking
  - Update Templates
  - Mix Change Log
- PLANT CALIBRATIONS**
  - Create Drum Calibration
  - Create Batch Calibration
  - Open Calibarion
- QCQA Tables**
  - Contract Table
- DENSITY WORKSHEETS**
  - Create Density Template
  - Open Density Template
  - Open Core Density
  - Open Nuc Density
  - Update Templates
- PAY FOR PERFORMANCE**
  - Create Random Density
  - Create Random Mix
  - Create PWL Report
  - Open Random Density
  - Open Random Mix
  - Open PWL Report
- AGGREGATE STOCKPILES**
  - Create Agg Template
  - Open Agg Template
  - Open Agg Stockpile
  - Open Agg History
  - Update Templates
- QUALITY CONTROL PERFORMANCE**
  - Create Random Density
  - Create Random Mix
  - Create QCP Report
  - Open Random Density
  - Open Random Mix
  - Open QCP Report
- EXIT**

# QMP Package Import Template Instructions

## Instructions for IMPORTING AGG History Database (AggHDB)

(This is used only when the Newer 2016 QCQA Package is installed)

Open the 2025 QMP Package Menu and navigate to a worksheet tab called "Tools Menu" There you will find the necessary steps to import the AggHDB from last previous version of the QMP Package.

Step 1: You must choose the location of the previous year's AggHDB by clicking the Browse... button. (You are looking for the "HISTORY" folder within the previous year's QMP Package folder).

Step 2: Click Import!

**Import Older Templates to New QCQA Package**

**STEP 1: Choose Location of Templates by clicking Browse**  
(Only select Templates from older versions of the QCQA Package for Step 1)

Location:  **Browse...**

**STEP 2: Select Product and Template Location**  
(This is for the Newly Installed QCQA Package for Template import)

(A) Select Product

(B) Choose Template

**STEP 3: Import and Update Templates**

**Import**

**Import Agg History Database from previous version.**

Choose Location of HISTORY folder by clicking Browse  
(Select the HISTORY folder from the previous year's QCQA Package)

Location:  **Browse...** **Import**

**Install Add-ins**

Click the box to Install  
TeamViewerQS.exe

**QCQA Package Documents**

QCQA Package Import  
Templates Instructions 2014.doc

QCQA Package Installation  
Instructions 2014.doc

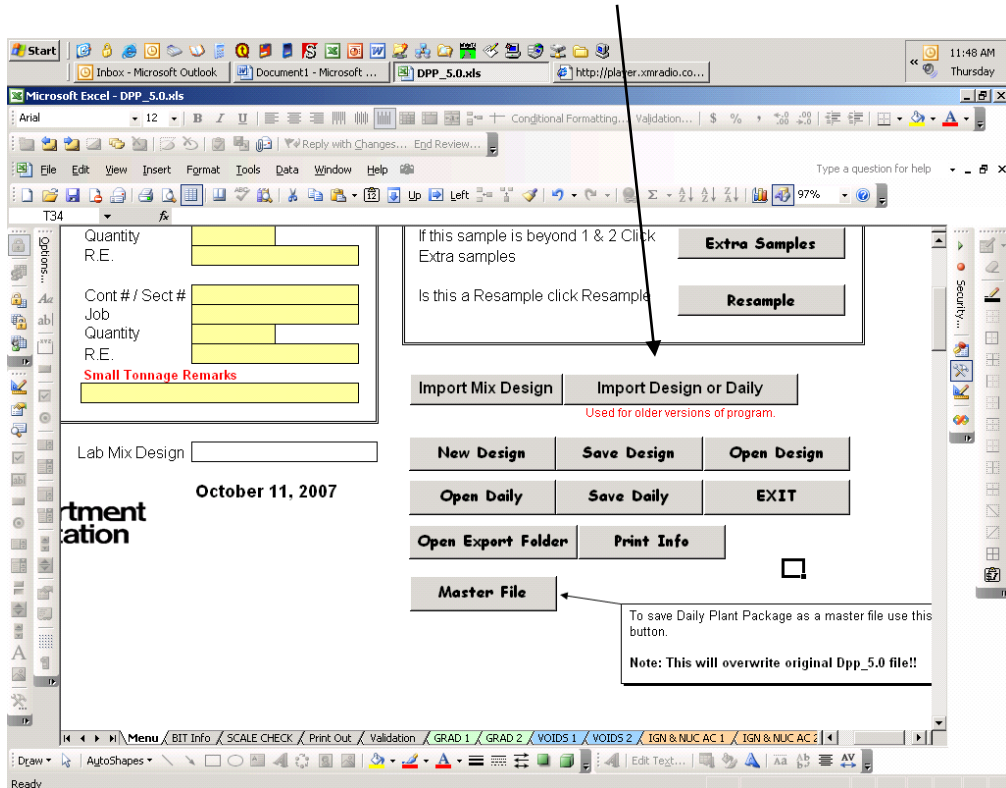
QCQA Package Update  
Documentation.xlsx

# QMP Package Import Template Instructions

## Instructions for Importing HMA Daily Plant Report Templates Information

### Step 1

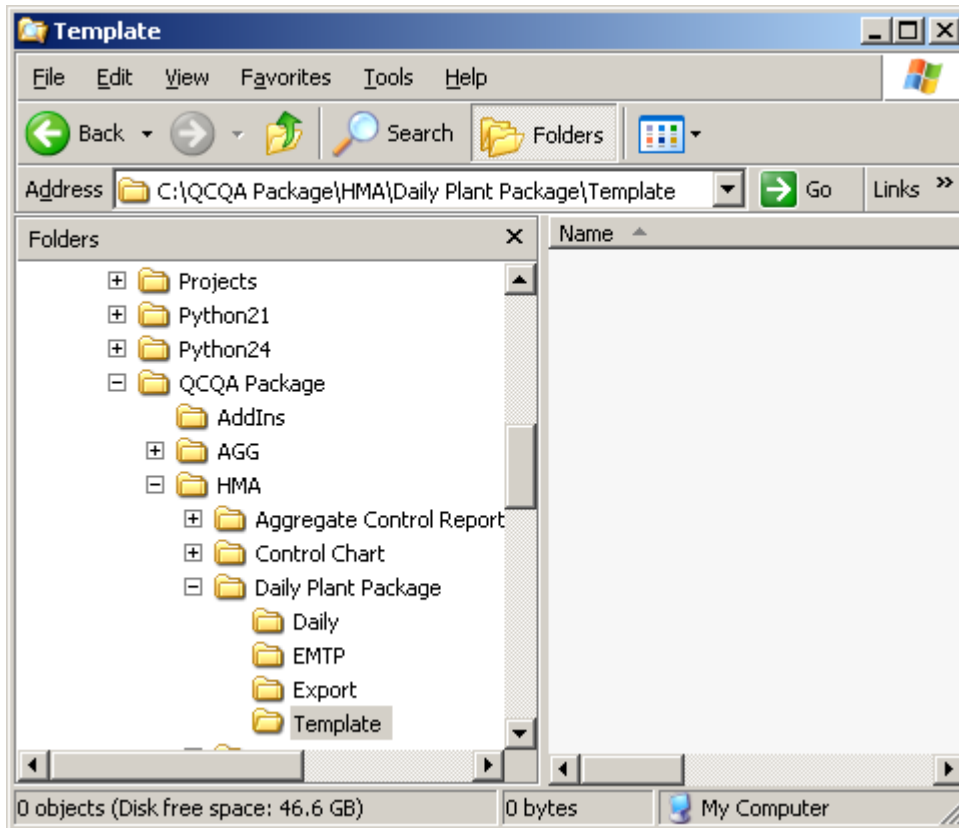
Open the Daily Plant Report Program and click the “Import Template or Daily” button.



## QMP Package Import Template Instructions

### Step 2

Go to file location where your Design Template or Daily is saved (This will most likely be where all 2024 Templates are located. This should be under the QMP Package Folder on the Drive that you chose to install 2025 version.) Click and open the Template or Daily that you want to import into the Daily Plant Report Program.



### Step 3

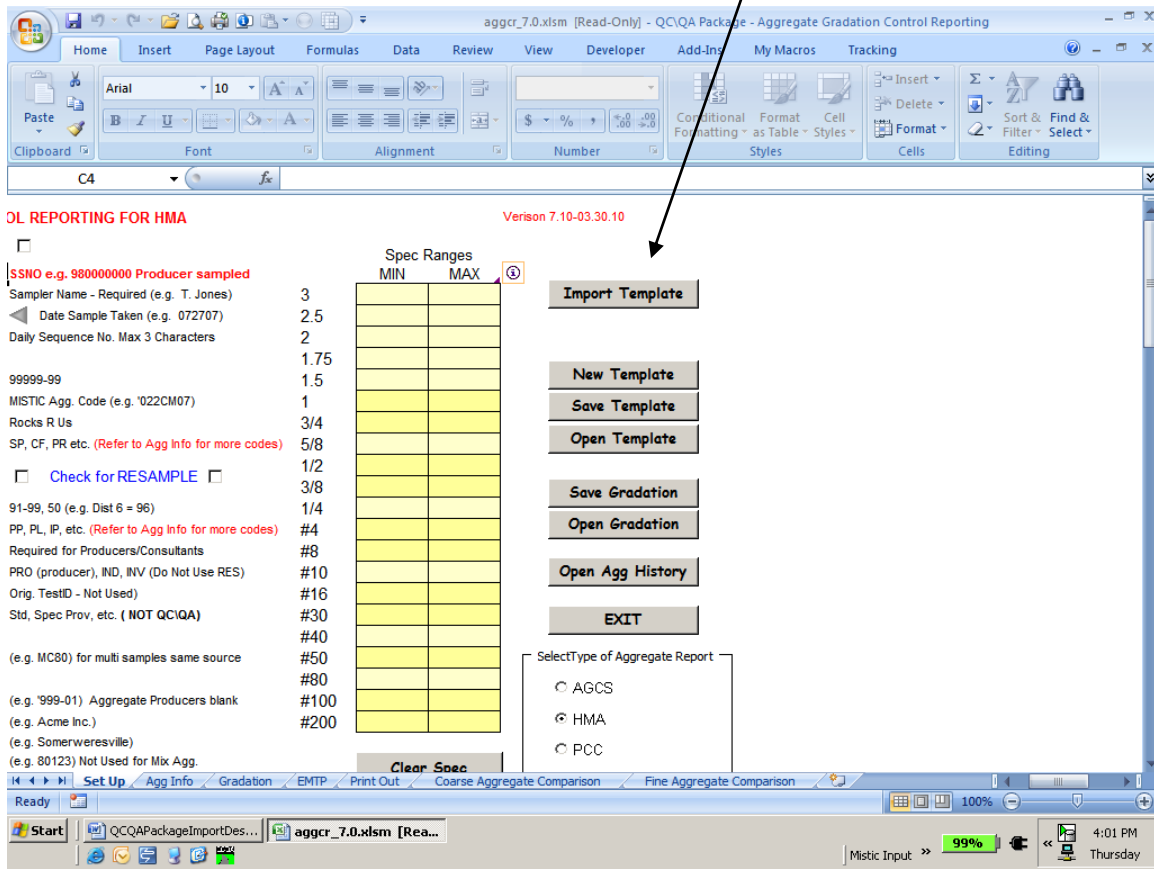
Check and make sure that all data has been imported correctly and **re-save** the Template using the Save Template button.

# QMP Package Import Template Instructions

## Instructions for Importing Aggregate Template Information

### Step 1

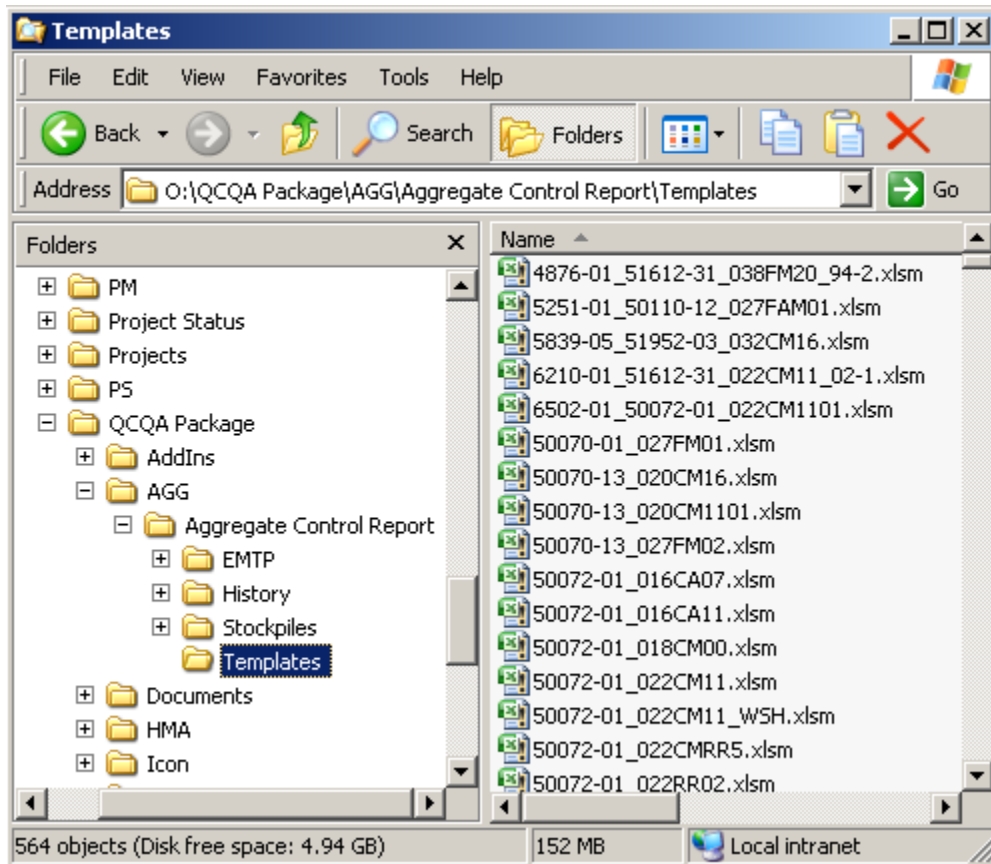
Open the AGCS Program and click the “Import Template” button.



## QMP Package Import Template Instructions

### Step 2

Go to file location where your Aggregate Template is saved (This will most likely be where all 2024 Templates are located. This should be under the QMP Package Folder on the Drive that you chose to install 2025 version.) Click and open the Template that you want to import into the AGCS Program.



### Step 3

Check and make sure that all data has been imported correctly and **re-save** the Template using the Save Template button.

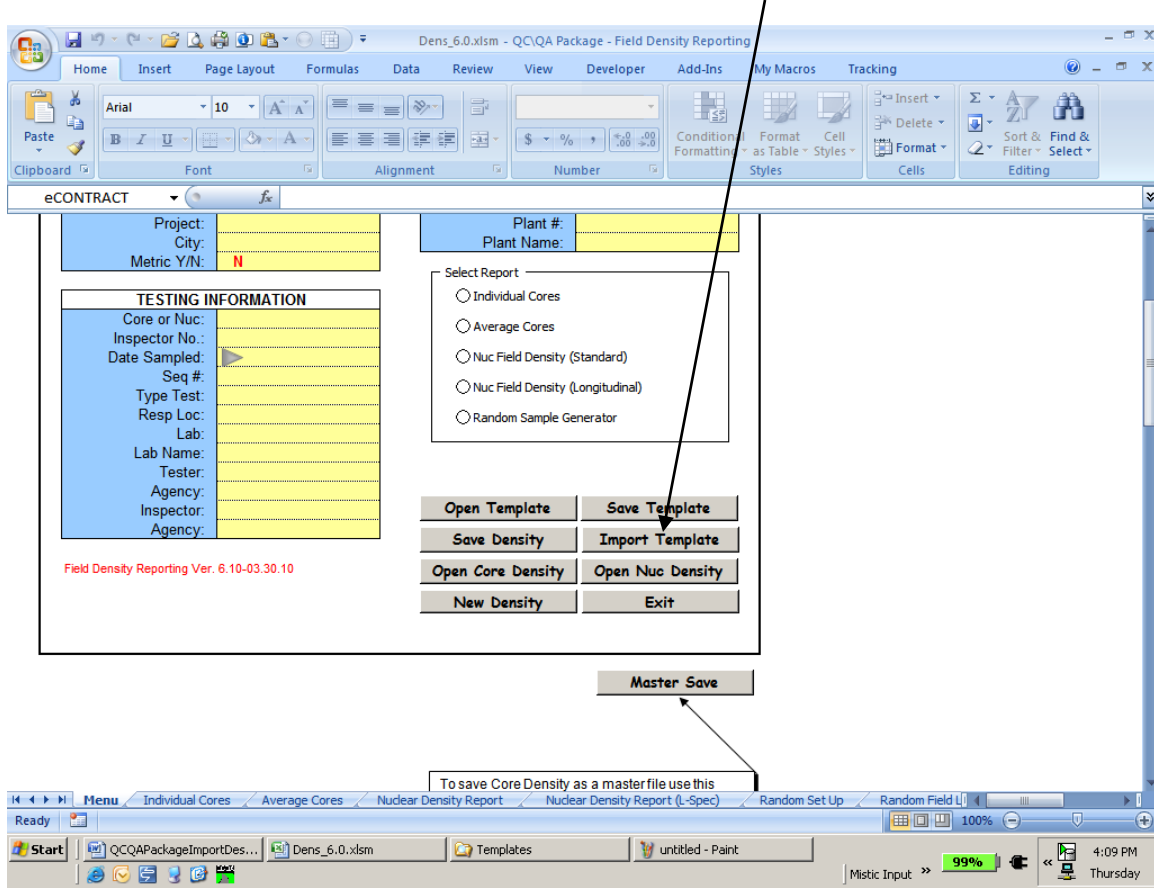


# QMP Package Import Template Instructions

## Instructions for Importing Density Template Information

### Step 1

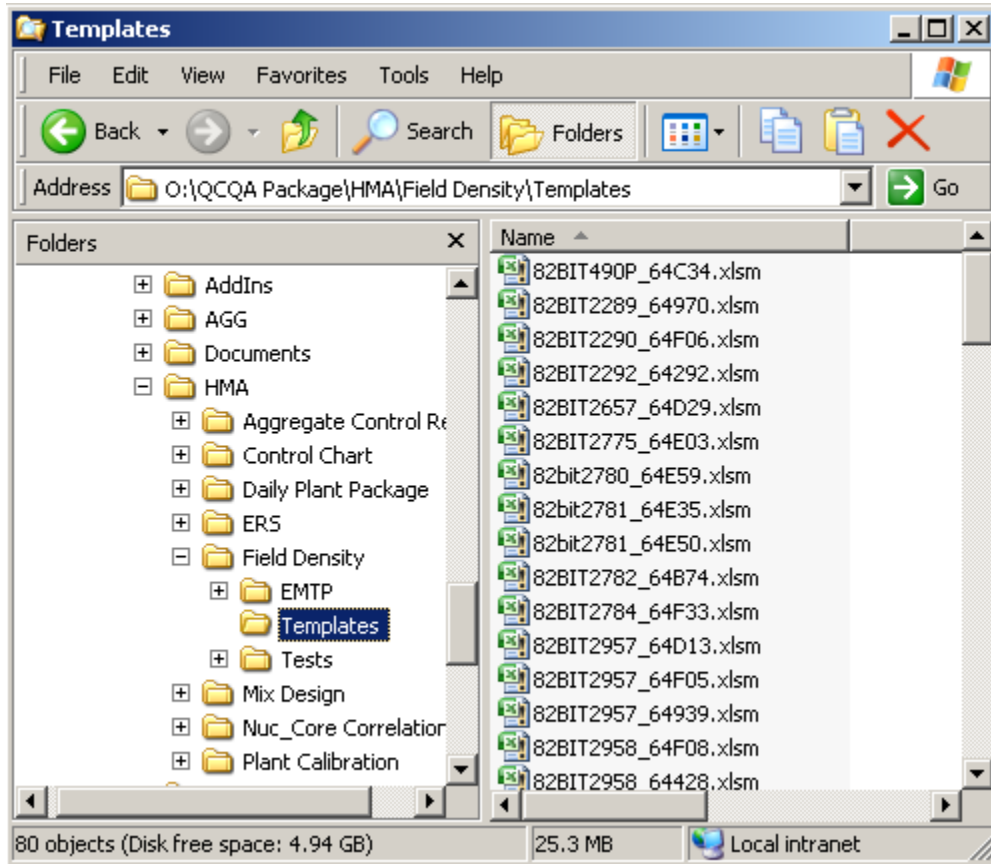
Open the Density Program and click the “Import Template” button.



# QMP Package Import Template Instructions

## Step 2

Go to file location where your Density Template is saved (This will most likely be where all 2024 Templates are located. This should be under the QMP Package Folder on the Drive that you chose to install 2025 version.) Click and open the Template that you want to import into the Density Program.



## Step 3

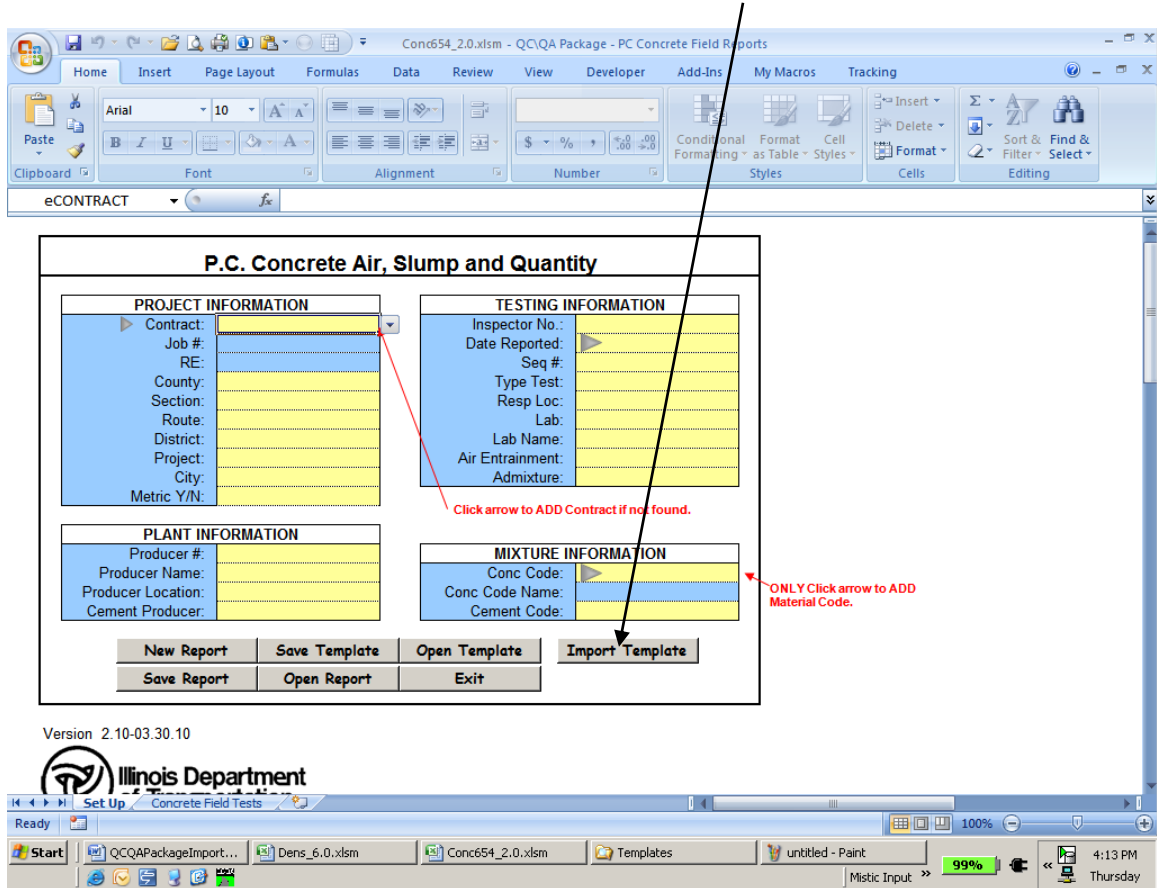
Check and make sure that all data has been imported correctly and **re-save** the Template using the Save Template button.

# QMP Package Import Template Instructions

## Instructions for Importing Concrete Template Information

### Step 1

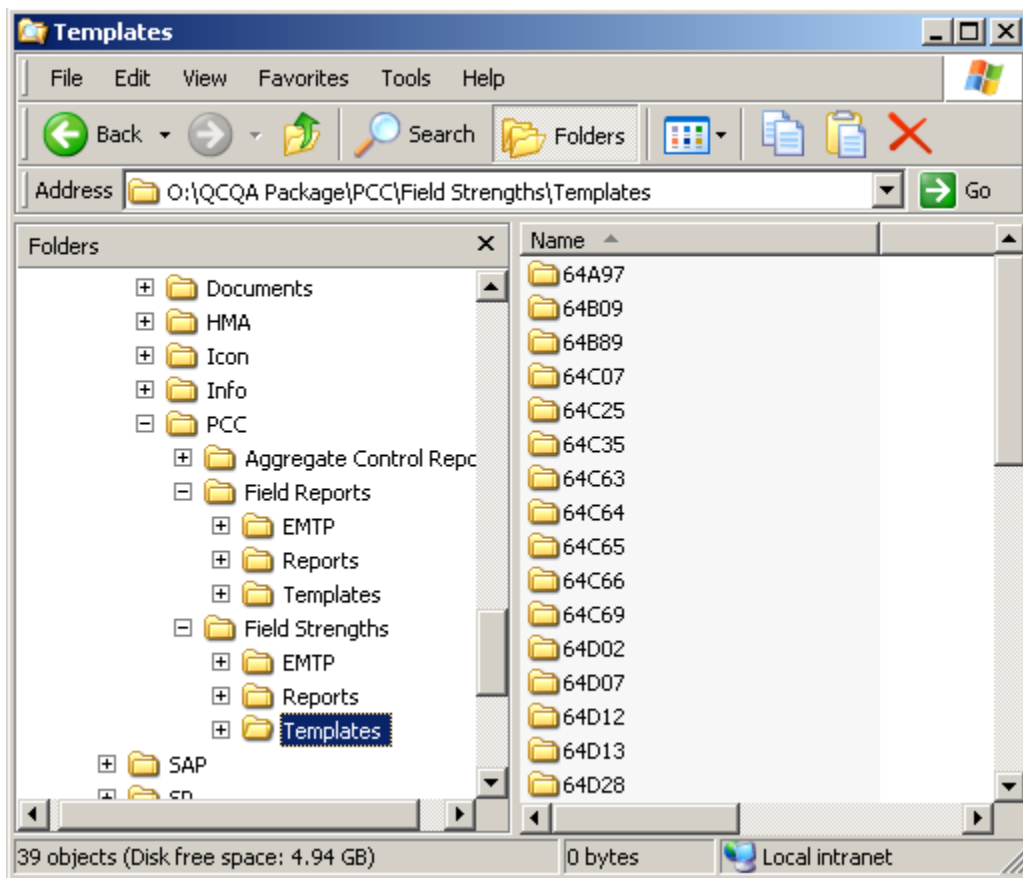
Open either the Concrete Field Program or Concrete Strength Program and click the "Import Template" button.



## QMP Package Import Template Instructions

### Step 2

Go to file location where your Concrete Template is saved (This will most likely be where all 2024 Templates are located. This should be under the QMP/QCQA Package Folder on the Drive that you chose to install 2025 version.) Click and open the Template that you want to import into the Concrete Field Program or Concrete Strength Program.



### Step 3

Check and make sure that all data has been imported correctly and **re-save** the Template using the Save Template button.