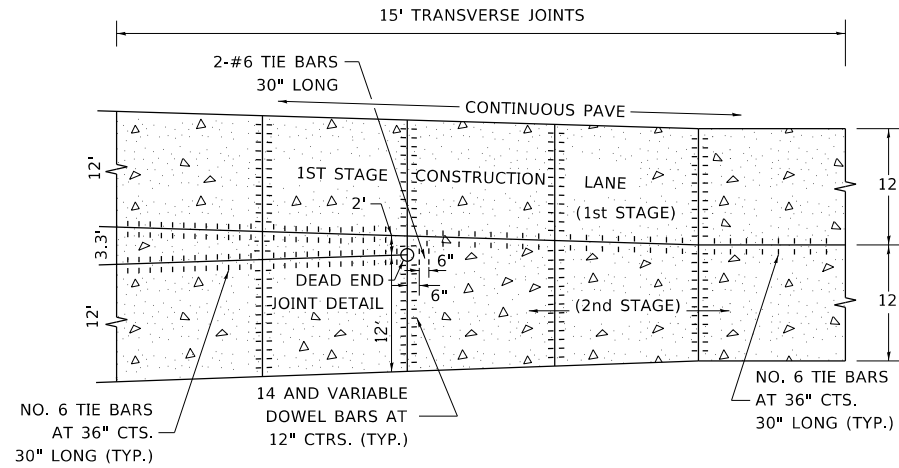
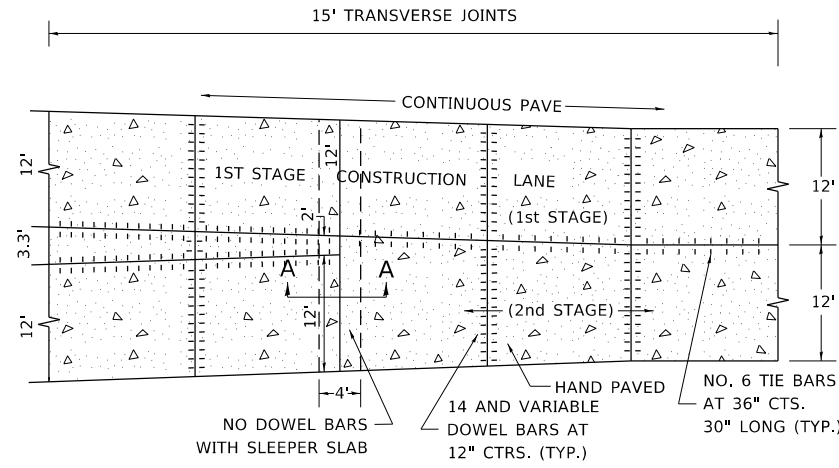


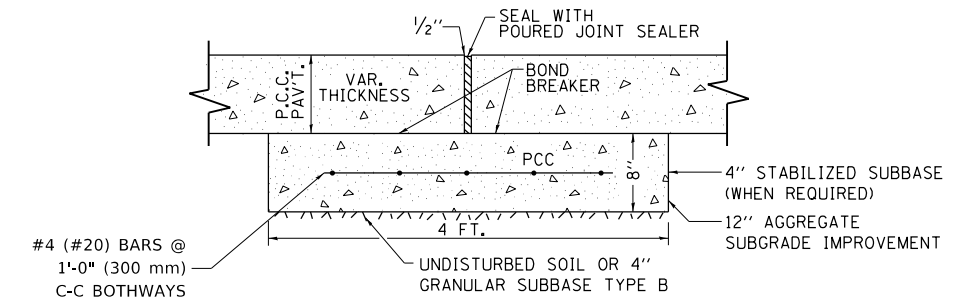
LANE REDUCTION WITH A CONTINUOUS PAVEMENT FOR 1ST STAGE WITH DEAD END JOINT OR SLEEPER SLAB



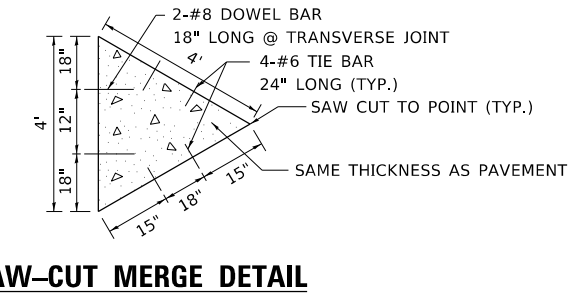
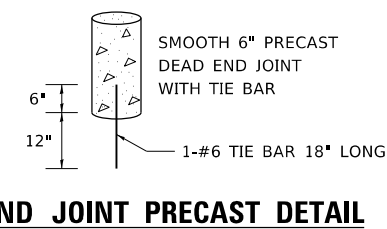
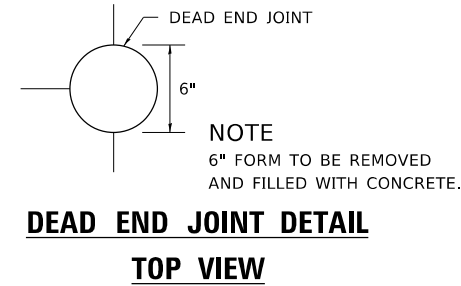
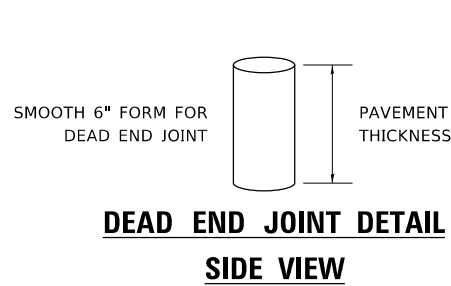
PLAN



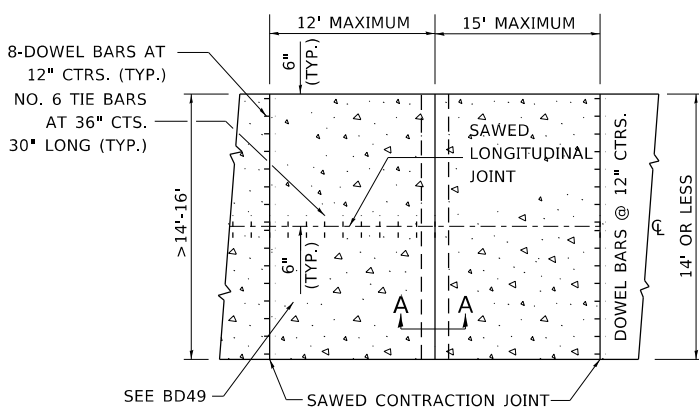
PLAN



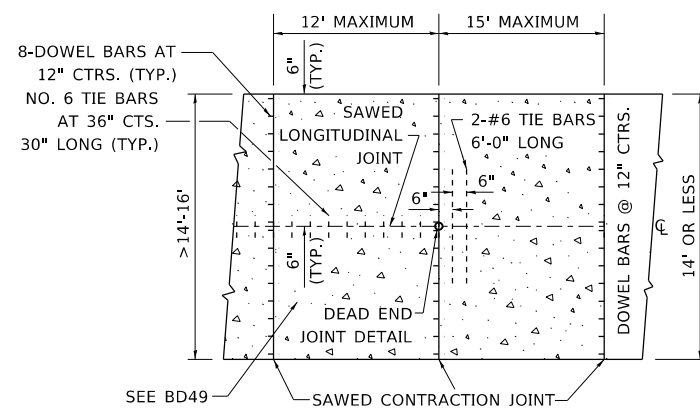
PROPOSED SECTION A-A OF SLEEPER SLAB



TRANSITION DETAILS FOR CENTERLINE SAW CUT FOR DEAD END JOINT OR SLEEPER SLAB FOR VARIABLE JOINTED PCC PAVEMENT FOR LANES OVER 14'

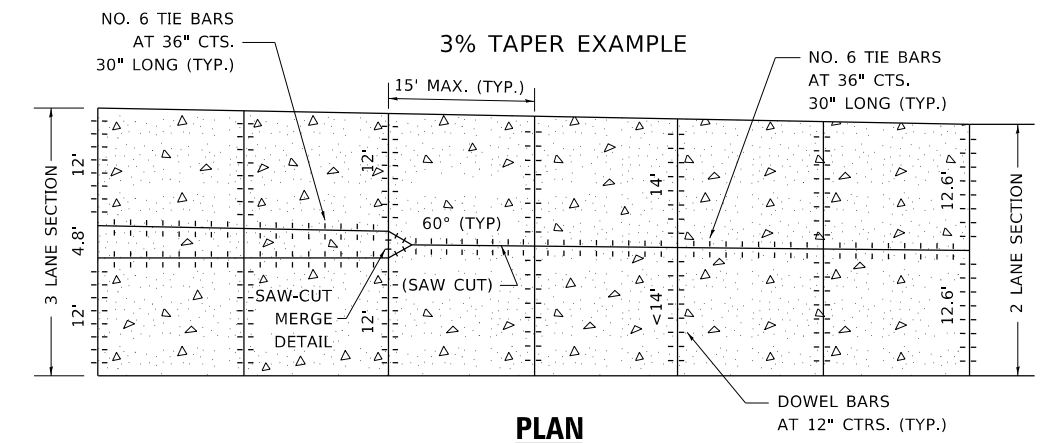


PLAN USING SLEEPER SLAB



PLAN USING DEAD END JOINT

INTERIOR LANE REDUCTION FOR THREE LANE SECTION IN PCC PAVEMENT



PLAN

- NOTES:**
- SAW-CUT MERGE DETAIL: THE 4' TRIANGLE SECTION COULD BE PRECAST OR CAST INPLACE AND PROPERLY PLACED WITH TIE BARS AND PROPERLY ALIGNED DOWEL BARS.
 - TRANSVERSE JOINT SPACING MAY DECREASE DEPENDING ON PAVEMENT THICKNESS BELOW 9.5". USE FORMULA JOINT SPACING IN (FT) = 2 X PAVEMENT THICKNESS IN (IN)-4.
 - USE SAW-CUT MERGE DETAIL IN SITUATIONS WHERE THERE IS NO STAGING.
 - PRECAST DEAD END JOINT SET IN PLACE WITH DRILLED HOLE INTO SUBBASE/SUBGRADE FOR #6 TIE BAR.
 - DEAD END JOINTS WILL NOT BE PAID SEPARATELY, BUT SHALL BE INCLUDED IN THE CONTRACT UNIT PRICE FOR PCC PAVEMENT.
 - SLEEPER SLAB WILL BE PAID FOR AT THE CONTRACT UNIT PRICE PER FOOT FOR SLEEPER SLAB.

MODEL: Default FILE: \\saw-behndev.com\PIVDDOT\Documents\DOT Office\Bridget: I:\Projects\DR15422\3-ACAD\Drawings\CAD\Print\B353.dgn

USER NAME = Lawrence,DeManche	DESIGNED - TGM, EAJ	REVISED - CADD 05-02-12
PLOT SCALE = 100.0000' / in.	DRAWN - AM	REVISED - CADD 11-02-15
PLOT DATE = 11/18/2022	CHECKED - JD	REVISED - K. SMITH 11-18-22
	DATE - 03/07/12	REVISED -

**STATE OF ILLINOIS
DEPARTMENT OF TRANSPORTATION**

**DETAIL OF VARIOUS TYPES OF LANE REDUCTION
FOR PCC PAVEMENT**

SCALE: NONE SHEET 1 OF 1 SHEETS STA. TO STA.

F.A. RTE.	SECTION	COUNTY	TOTAL SHEETS	SHEET NO.
	BD-53			
ILLINOIS			CONTRACT NO.	
FED. AID PROJECT				