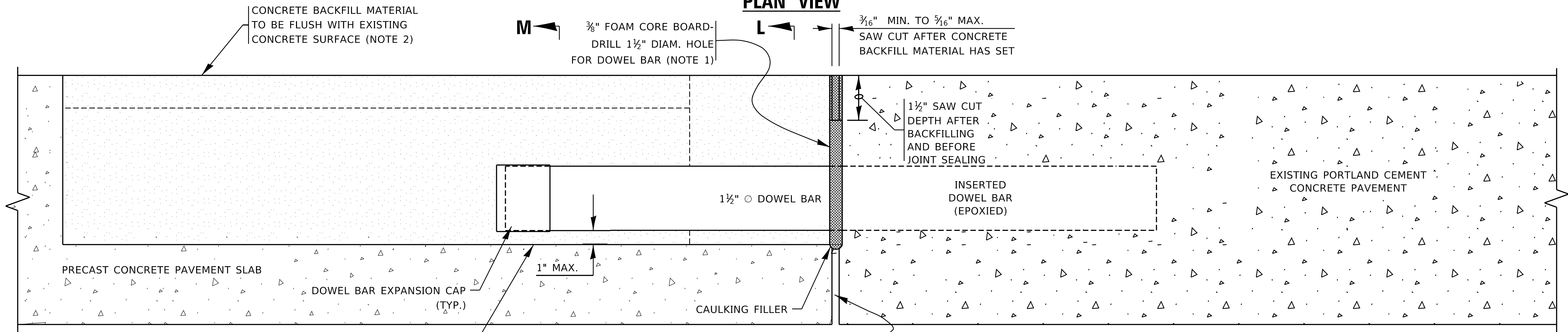
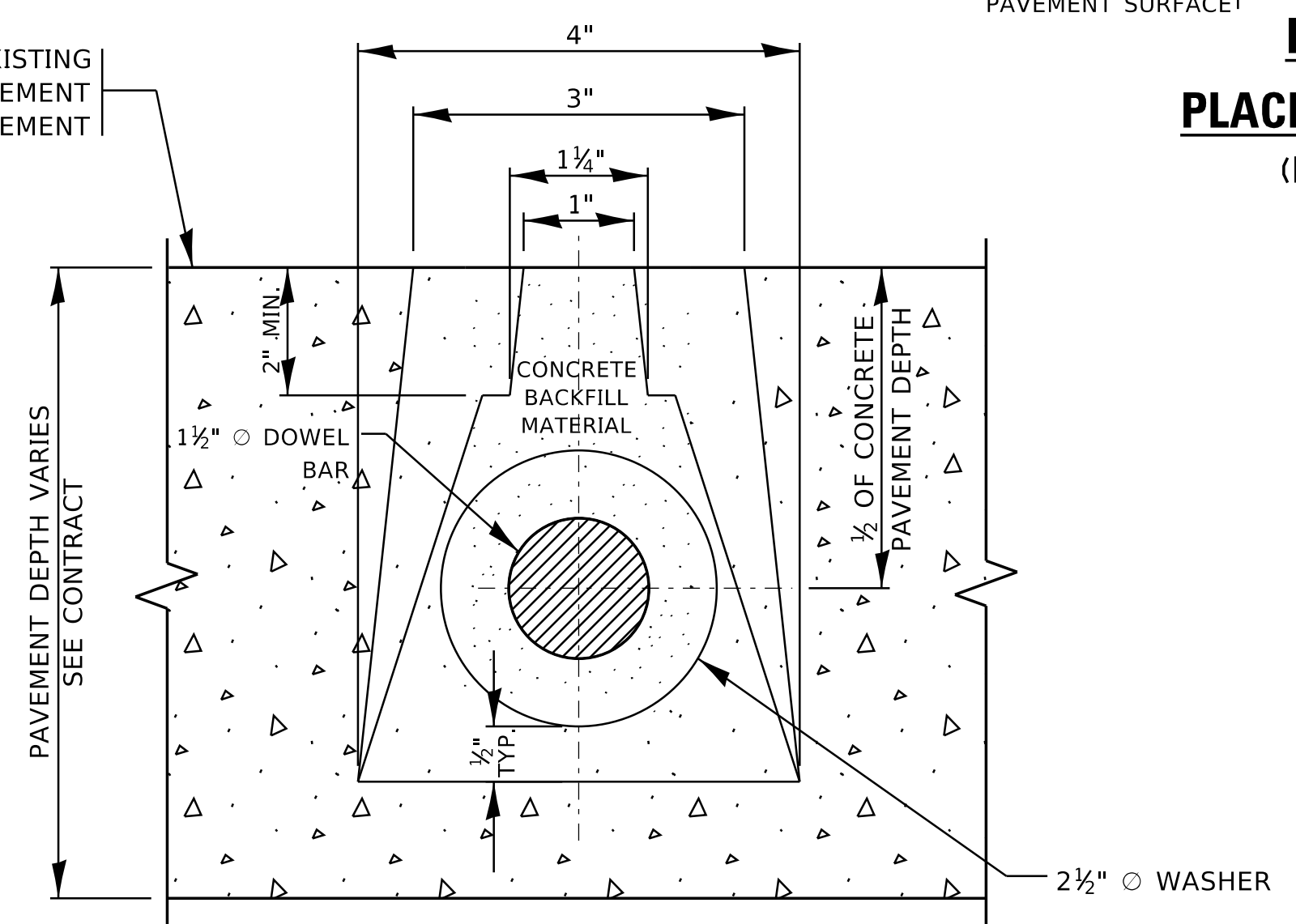


**PLAN VIEW**



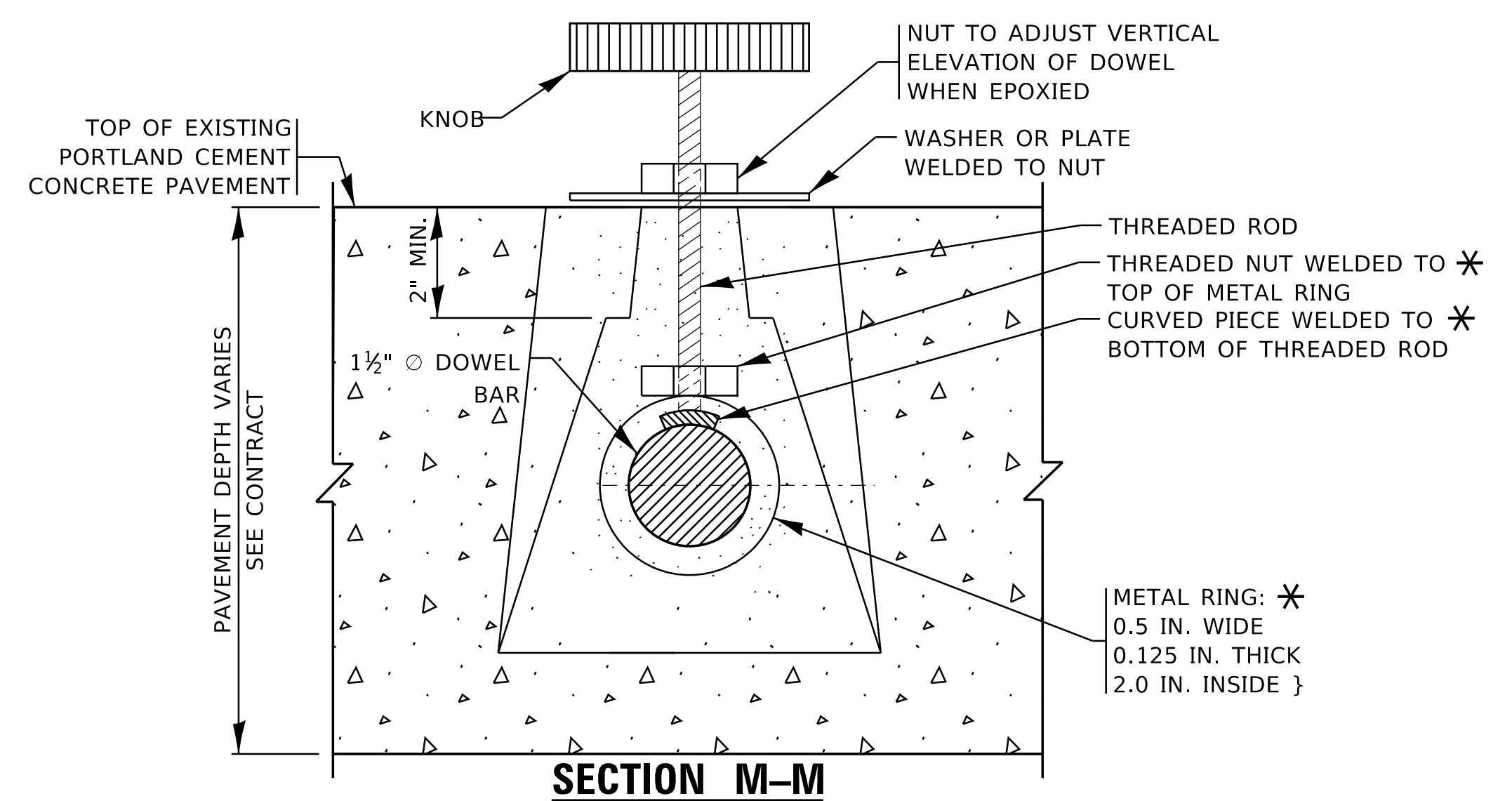
**SECTION G-G**

**DETAIL G - NARROW MOUTH DOWEL BAR  
PLACEMENT DETAIL FOR ISOLATED PRECAST PANELS**  
(FOR OPTIONAL APPLICATION WITH ALL ISOLATED  
SLABS IN PLACE OF FULL RETROFITS)



**SECTION L-L**

- NOTES:**
1. PLACE FOAM CORE BOARDS TO THE TOP OF PATCH.
  2. UPON COMPLETION, THE FINISHED SURFACE OF THE CONCRETE BACKFILL MATERIAL SHALL NOT BE BELOW EXISTING CONCRETE SURFACE.



**SECTION M-M**

**CLAMP DETAIL FOR SLIDING DOWEL BAR SLOTS**

\* METAL RING MAY BE REPLACED WITH A STRONG MAGNET WELDED TO THE THREADED ROD. AT LEAST ONE CLAMP WILL BE NEEDED FOR EACH INSERTED DOWEL BAR TO MAINTAIN ALIGNMENT.

MODEL: Default  
FILE NAME: p:\pub\planroom.dwg  
PROJECTS\DOT\Documents\DOT - Offices\District 1\Projects\DHHS\0223\1A\CADD\Draw\CAD\sheet\0517.dwg

|                             |                     |                     |
|-----------------------------|---------------------|---------------------|
| USER NAME = footemj         | DESIGNED - O. PATEL | REVISED - D.G. 6-14 |
|                             | DRAWN -             | REVISED - D.G. 9-16 |
| PLOT SCALE = 50.0000' / in. | CHECKED -           | REVISED -           |
| PLOT DATE = 3/27/2019       | DATE - 10-25-2013   | REVISED -           |

**STATE OF ILLINOIS  
DEPARTMENT OF TRANSPORTATION**

**PRECAST CONCRETE PAVEMENT SLABS**

SCALE: NONE SHEET 17 OF 19 SHEETS STA. TO STA.

|                           |              |        |              |           |
|---------------------------|--------------|--------|--------------|-----------|
| F.A. RTE.                 | SECTION      | COUNTY | TOTAL SHEETS | SHEET NO. |
|                           | <b>BD 57</b> |        |              |           |
| ILLINOIS FED. AID PROJECT |              |        | CONTRACT NO. |           |