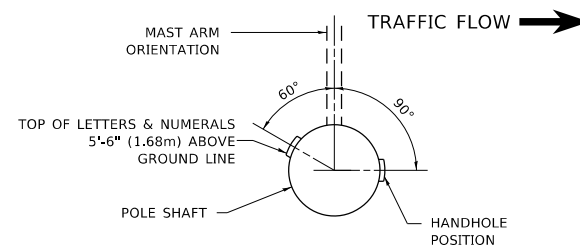
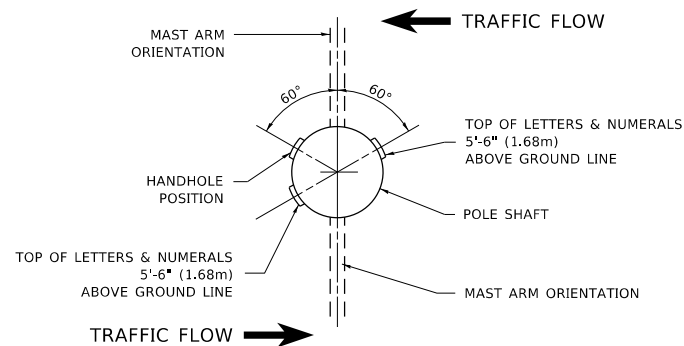


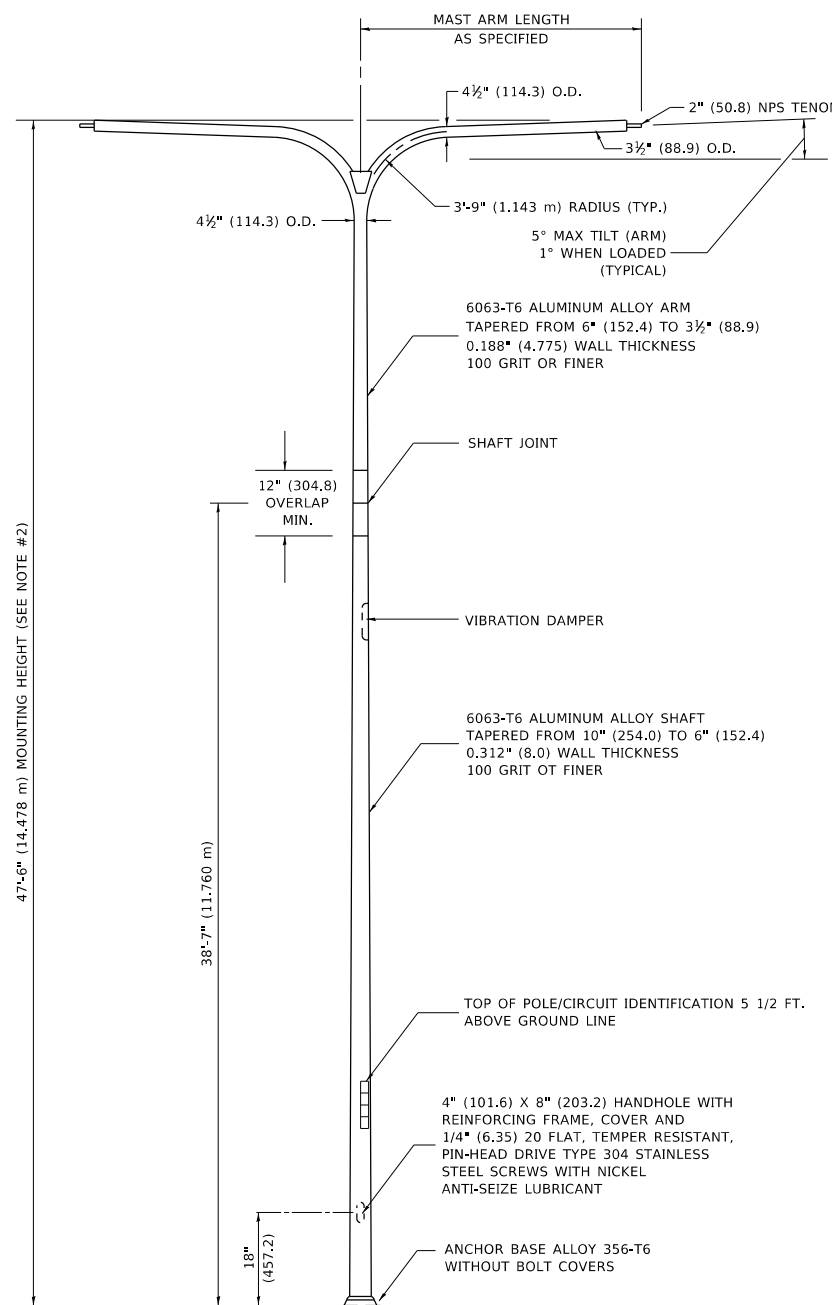
POSITION OF HANDHOLE AND POLE NUMBER FOR SINGLE MAST ARM POLES MOUNTED ON BRIDGE PARAPET OR BARRIER WALL



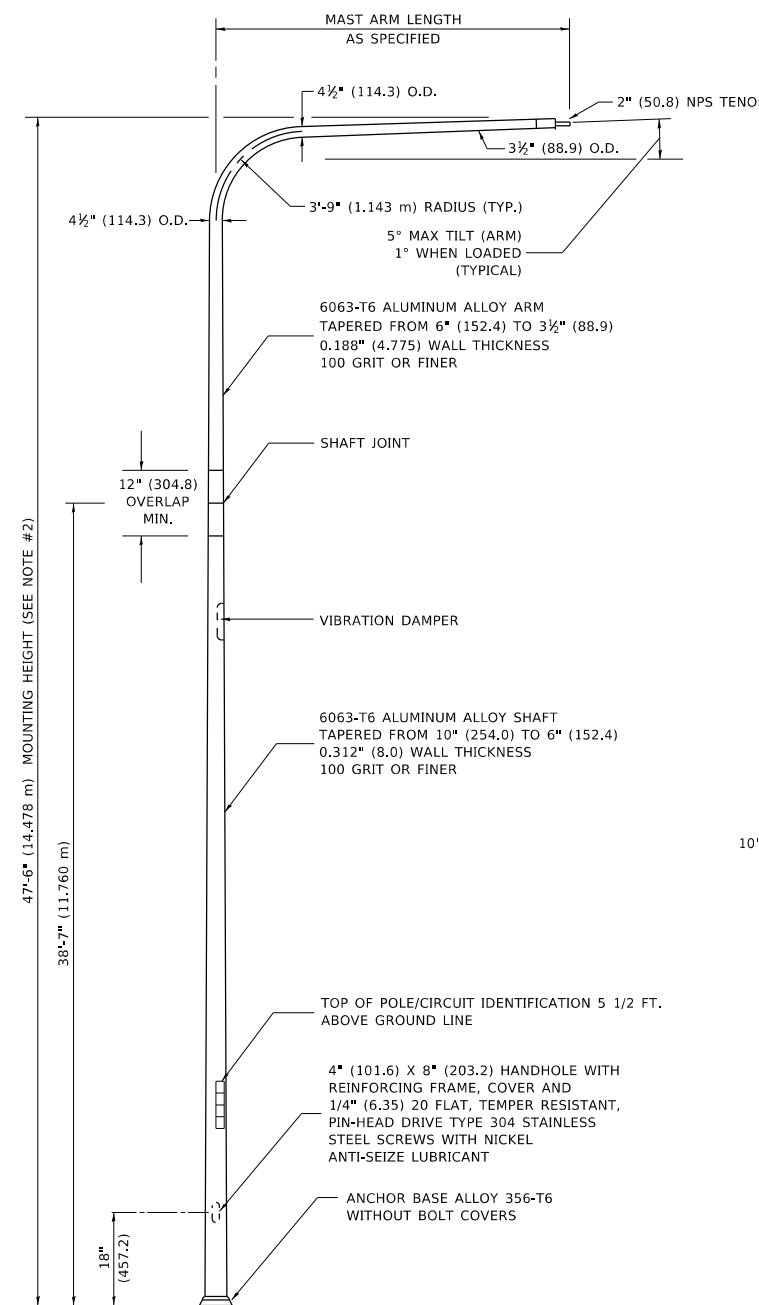
POSITION OF HANDHOLE AND POLE NUMBER FOR SINGLE MAST ARM POLES



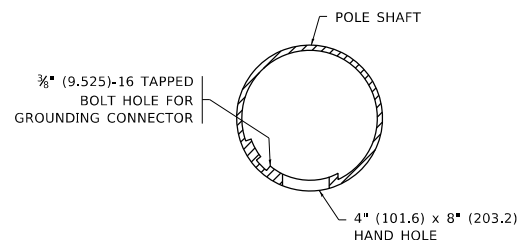
POSITION OF HANDHOLE AND POLE NUMBER FOR TWIN MAST ARM POLES



TWIN ARM POLE

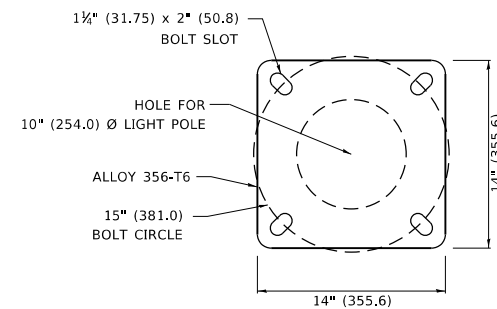


SINGLE ARM POLE



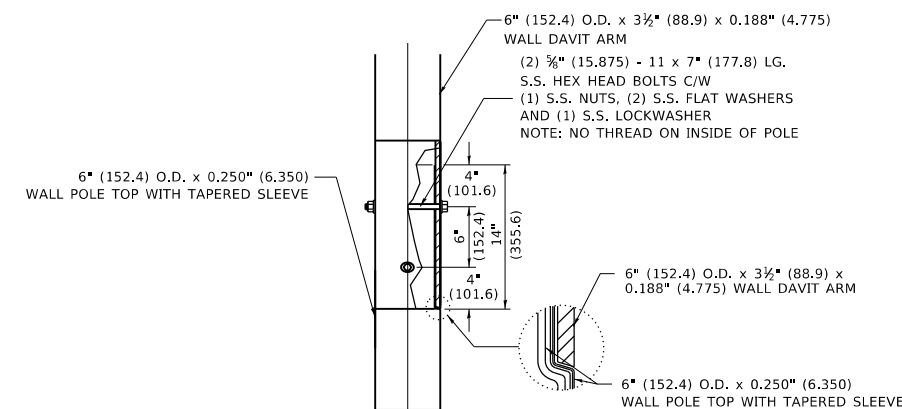
HANDHOLE DETAIL

(N.T.S.)



LIGHT POLE BASE PLATE DETAIL

(FOR POLE MOUNTED ON 15 INCH (381.0) BOLT CIRCLE FOUNDATION)



DAVITT ARM CONNECTION

[14" (355.6) OVERLAP SHOWN]

NOTES

1. ALL DIMENSIONS ARE IN INCHES (MILLIMETERS) UNLESS OTHERWISE SHOWN.
2. MOUNTING HEIGHT IS DEFINED AS THE DISTANCE FROM THE CENTERLINE OF THE TENON TO THE BOTTOM OF THE ANCHOR BASE.
3. TWO PIECE SHAFT WILL BE MATCHED MARKED AND INTERCHANGEABLE BETWEEN DIFFERENT UNITS. FIELD DRILLING OF THE HOLES WILL NOT BE ALLOWED.
4. THE LIGHT POLE WILL MEET AASHTO DESIGN CRITERIA AS SPECIFIED.
5. THE INSTALLING CONTRACTOR WILL PROVIDE A UL LISTED GROUNDING CONNECTOR. BURNDY K2C23, T&B SP4DL OR APPROVED EQUAL.
6. LIGHT POLES WILL NOT BE INSTALLED WITHOUT MAST ARMS AND LUMINAIRES.
7. LIGHT POLES WILL BE SET PLUMB ON THE FOUNDATION WITHOUT THE USE OF LEVELING NUTS, WASHERS OR SHIMS.
8. LIGHTING UNIT IDENTIFICATION NUMBERS SHALL BE INSTALLED BEFORE THE LIGHTING UNIT IS ENERGIZED.

MODEL: Default
FILE: 441123-raw_bentley.com\FWIDOT\Documents\DOT_Offices\Bhrtet_1\Projects\DH5422\3-21-CADD\Drawings\CAD\Printsets\1410.dgn

USER NAME = Lawrence,DeManche	DESIGNED -	REVISED - R. TOMSONS 09-02-03
	DRAWN -	REVISED - R. TOMSONS 01-18-13
PLOT SCALE = 100.0000' / in.	CHECKED -	REVISED - T. GODINHO 06-13-22
PLOT DATE = 8/9/2024	DATE -	REVISED - A. CUBIC 08-09-24

**STATE OF ILLINOIS
DEPARTMENT OF TRANSPORTATION**

DAVITT LIGHT POLE			
47'-6" (14.478 m) MOUNTING HEIGHT			
SCALE: NONE	SHEET 1 OF 1 SHEETS	STA.	TO STA.

F.A. RTE.	SECTION	COUNTY	TOTAL SHEETS	SHEET NO.
BE-410		CONTRACT NO.		
ILLINOIS		FED. AID PROJECT		