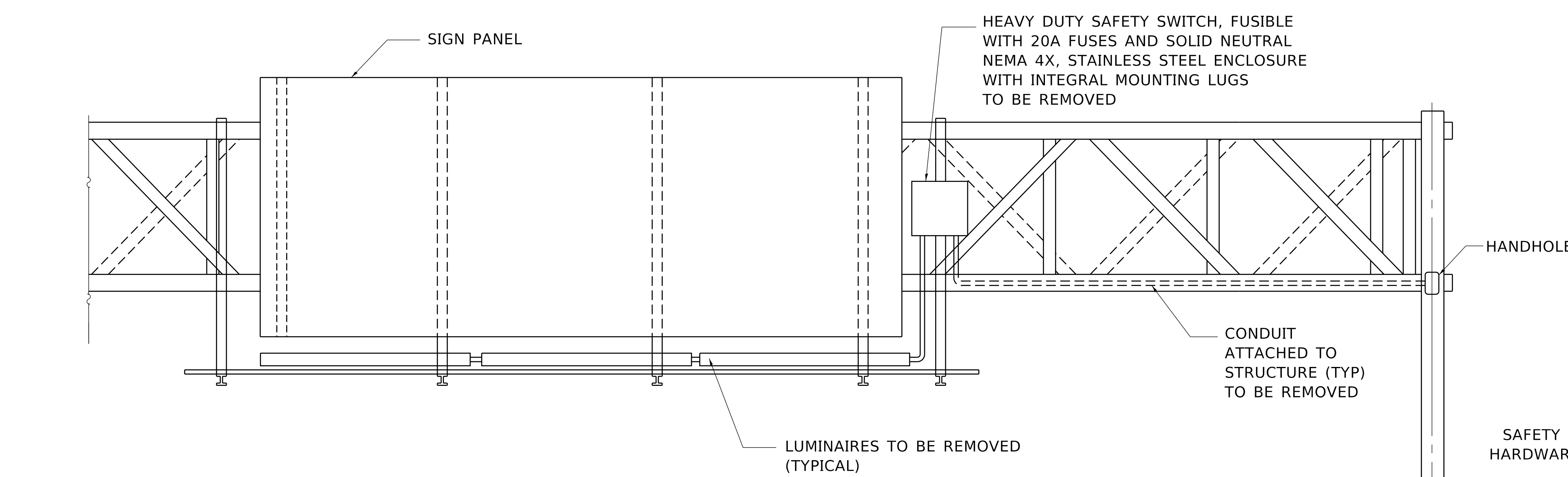
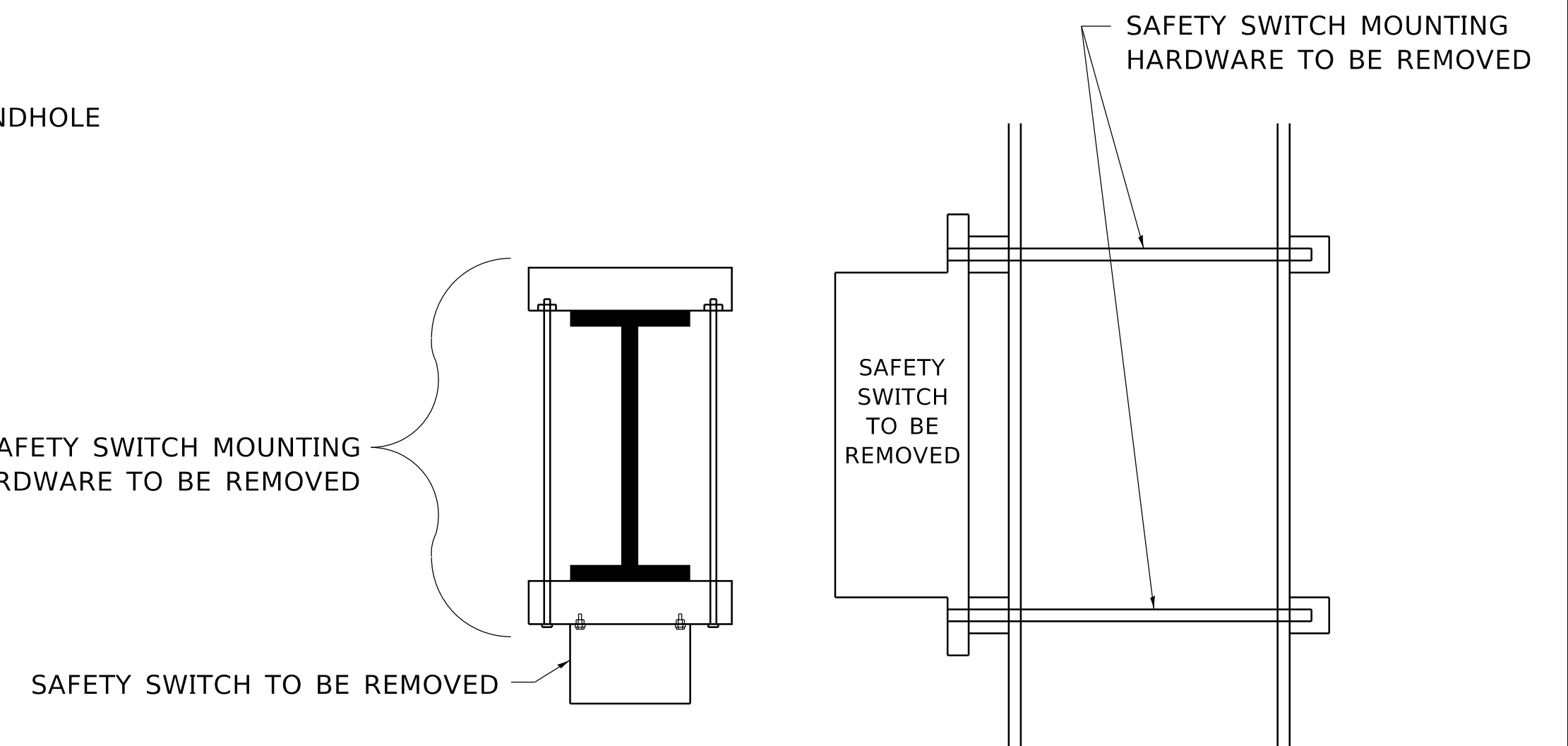
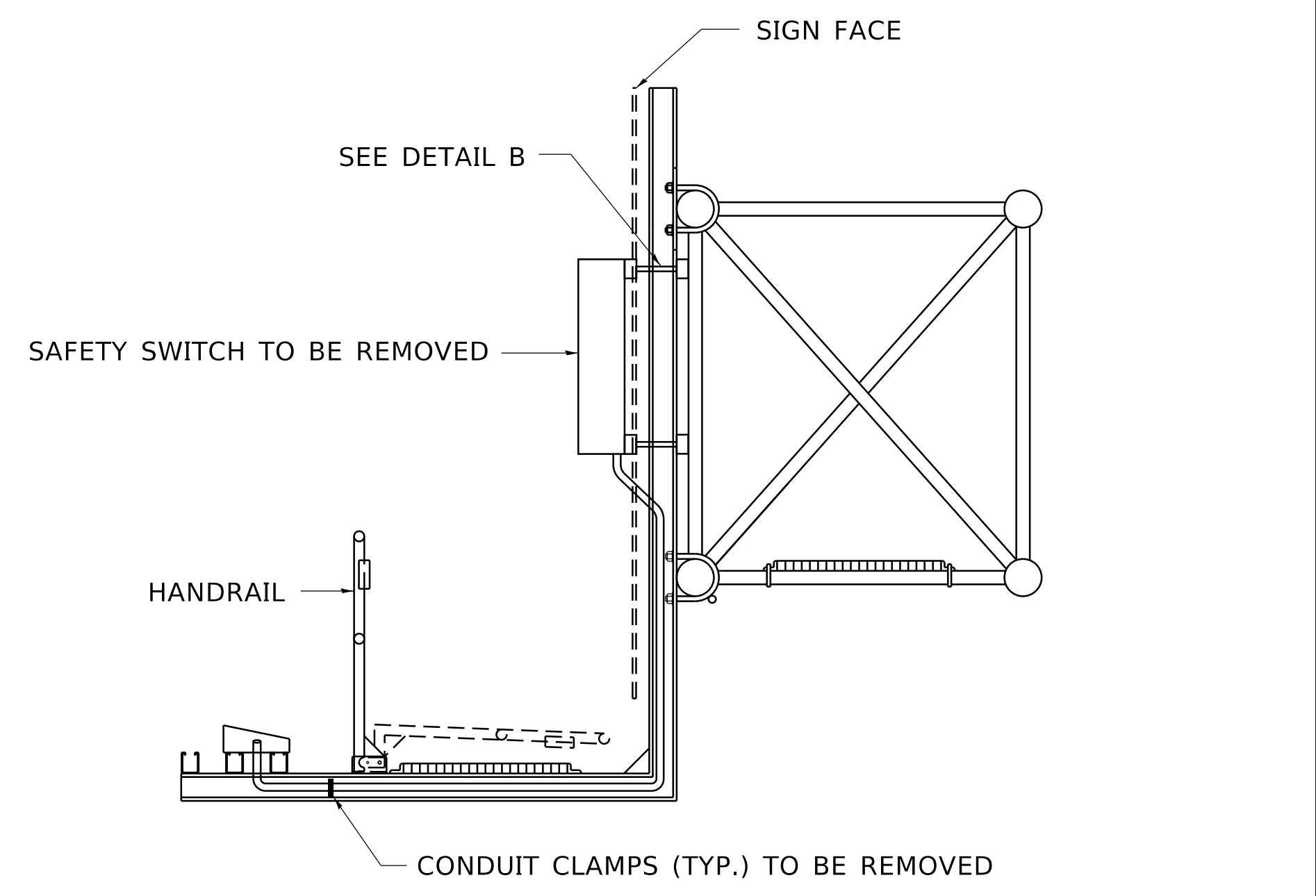


TOP VIEW



ELEVATION VIEW

- WIRING MODIFICATIONS:**
- A) IF SIGN IS NOT A FED THRU;
 - 1) REMOVE ALL WIRING FROM LOWER HANDHOLE OR JUNCTION BOX TO LUMINAIRES. (LOAD SIDE)
 - 2) CAP LINE SIDE OF WIRES.
 - B) IF SIGN IS USED AS A MID CIRCUIT TAP;
 - 1) REMOVE ALL WIRING FROM LOWER HANDHOLE OR JUNCTION BOX TO LUMINAIRES. (LOAD SIDE)
 - 2) RESPLICE LINE SIDE CABLES TO MAINTAIN CIRCUIT CONTINUITY.



TOP VIEW

SIDE VIEW

DETAIL B

MODEL: Default
 FILE: M:\MTE_PlanRoom\dot.illinois.gov\PIWIDOT\Documents\DOT_Offices\District_1\Projects\Dist5\22311CAD\Drawn\CAD\sheet\be610.dgn
 8/10/2019 4:19:20 PM User:dotnet

USER NAME = footemj	DESIGNED -	REVISED -
PLOT SCALE = 50.0000 "/in.	DRAWN -	REVISED -
PLOT DATE = 4/19/2019	CHECKED -	REVISED -
	DATE - 10-16-14	REVISED -

**STATE OF ILLINOIS
DEPARTMENT OF TRANSPORTATION**

REMOVAL OF ELECTRICAL LIGHTING FROM SIGN STRUCTURE			
SHEET 2 OF 2 SPAN TYPE			
SCALE: NONE	SHEET 2	OF 2 SHEETS	STA. TO STA.

F.A. RTE.	SECTION	COUNTY	TOTAL SHEETS	SHEET NO.
	BE-610			
ILLINOIS		FED. AID PROJECT		