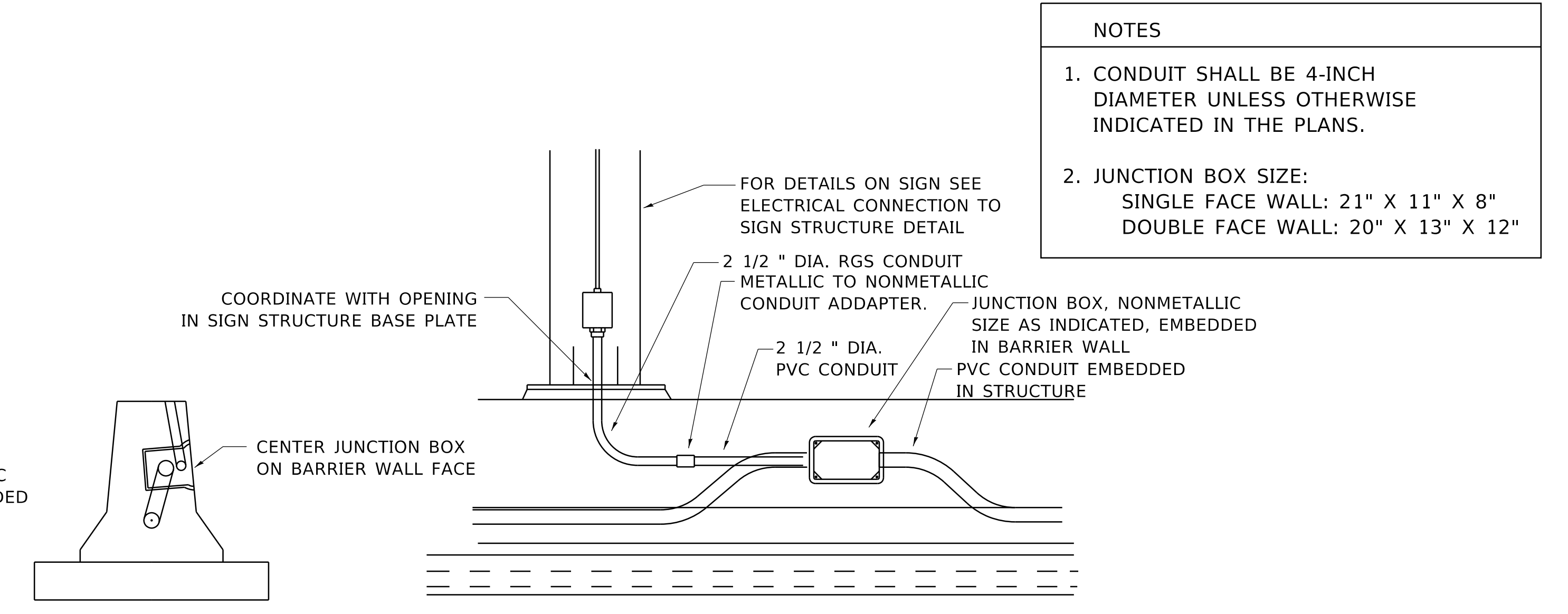


- NOTES**
1. CONDUIT SHALL BE 4-INCH DIAMETER UNLESS OTHERWISE INDICATED IN THE PLANS.
 2. JUNCTION BOX SIZE:
SINGLE FACE WALL: 21" X 11" X 8"
DOUBLE FACE WALL: 20" X 13" X 12"

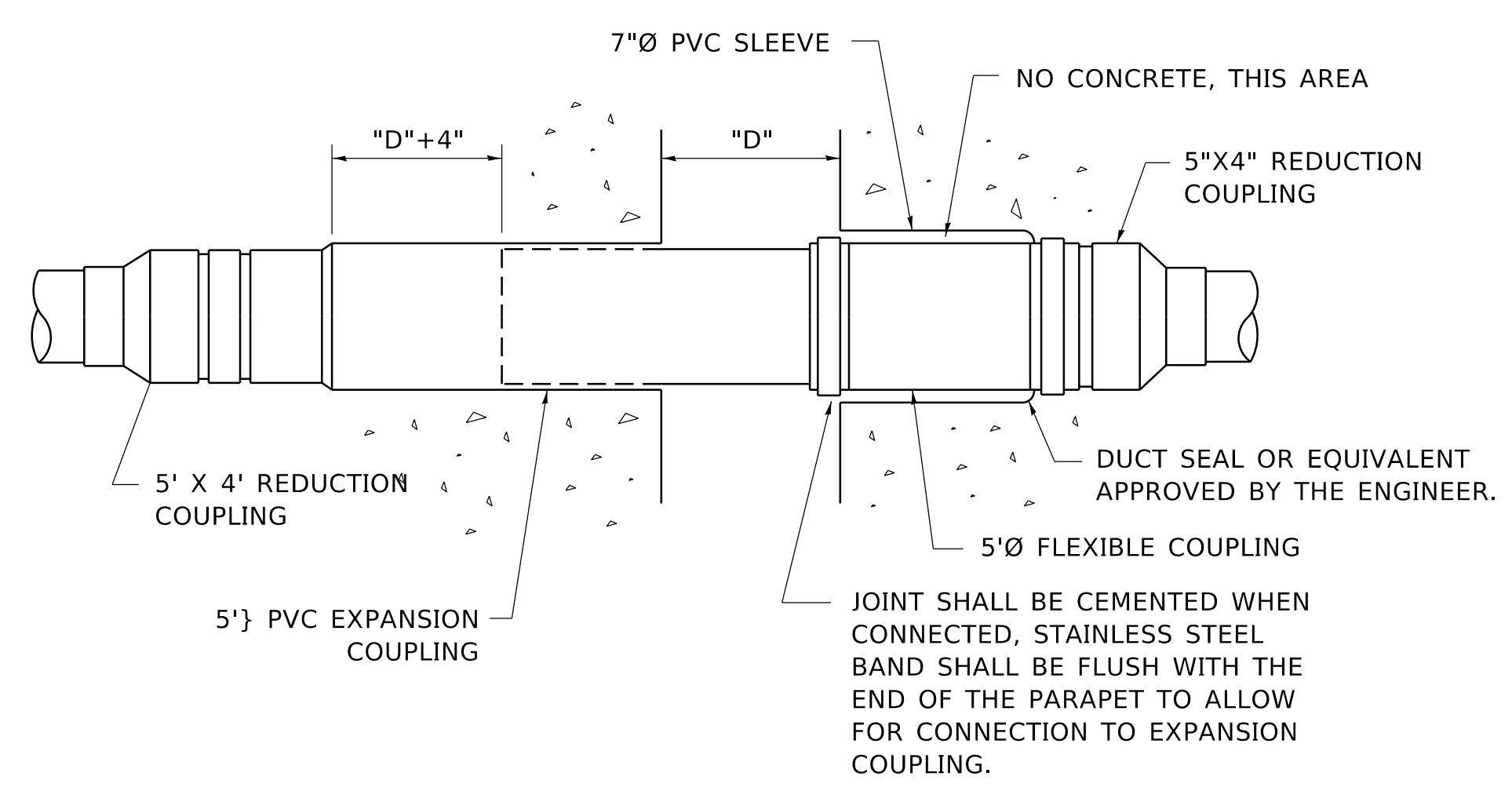
NOTE:
FOR DETAILS ABOVE BARRIER WALL SEE UNDERPASS DETAILS.

ED - BWD
ELECTRIC CONNECTION TO UNDERPASS LIGHTING

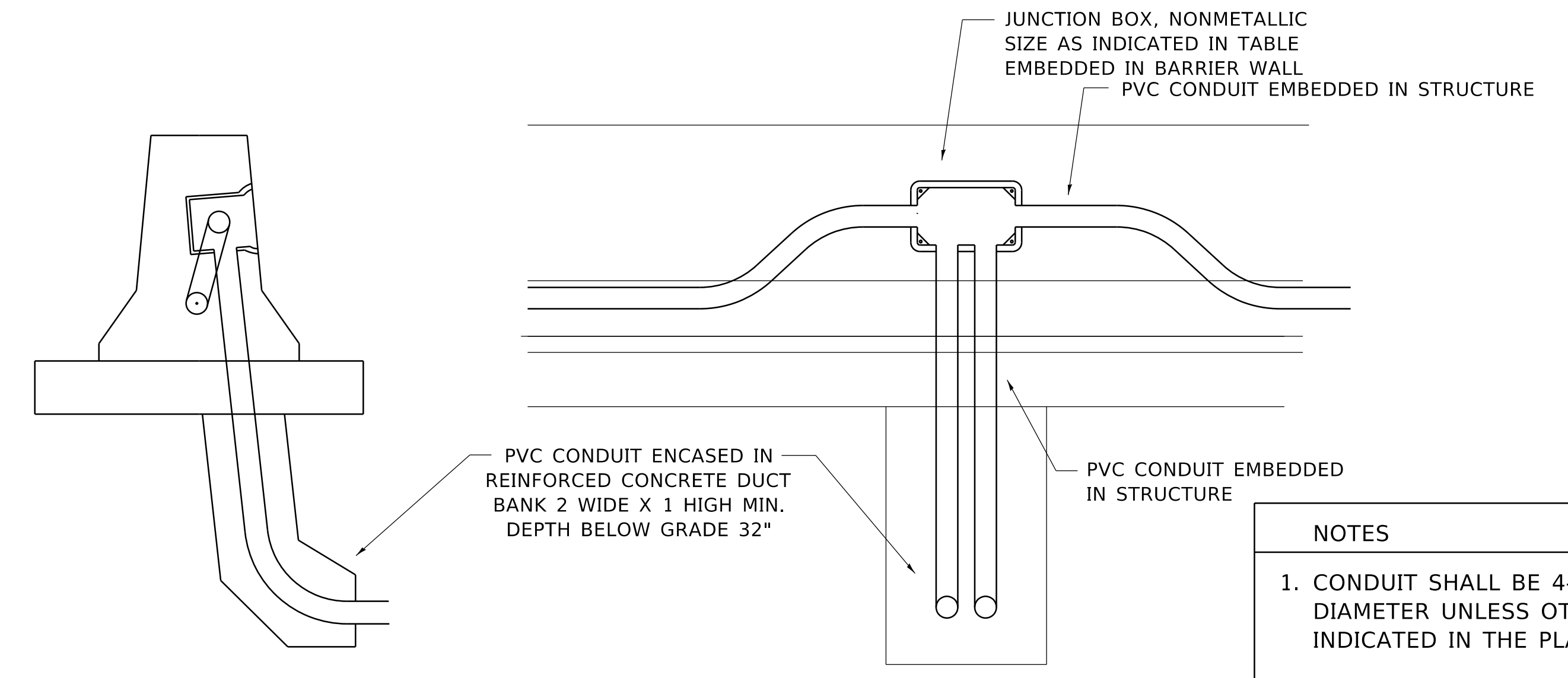


- NOTES**
1. CONDUIT SHALL BE 4-INCH DIAMETER UNLESS OTHERWISE INDICATED IN THE PLANS.
 2. JUNCTION BOX SIZE:
SINGLE FACE WALL: 21" X 11" X 8"
DOUBLE FACE WALL: 20" X 13" X 12"

ED - SGN
JUNCTION BOX EMBEDDED IN BARRIER WALL FOR SIGN LIGHTING



INSTALLATION OF CONDUIT IN BRIDGE PARAPET EXPANSION JOINT
(N.T.S.)



- NOTES**
1. CONDUIT SHALL BE 4-INCH DIAMETER UNLESS OTHERWISE INDICATED IN THE PLANS.
 2. JUNCTION BOX SIZE:
SINGLE FACE WALL: 21" X 11" X 8"
DOUBLE FACE WALL: 20" X 13" X 12"

ED - BW
JUNCTION BOX EMBEDDED IN BARRIER WALL

MODEL: Default
FILE NAME: p:\uplanroom.dat\illinois\pvc\p\DOT\Documents\DOT_Offices\District_1\Projects\Dist5\22231\CAD\Drawn\CADsheets\be703.dgn

USER NAME = footemj	DESIGNED -	REVISED -
	DRAWN -	REVISED -
PLOT SCALE = 50.0000' / in.	CHECKED -	REVISED -
PLOT DATE = 4/19/2019	DATE - 01-20-2009	REVISED -

**STATE OF ILLINOIS
DEPARTMENT OF TRANSPORTATION**

MISCELLANEOUS ELECTRICAL DETAILS, SHEET B
J BOX EMBEDDED IN BARRIER WALL - INSTALLATION OF CONDUIT IN BRIDGE PARAPET EXPANSION JOINT - ELECTRIC CONNECTION TO UNDERPASS LIGHTING

SCALE: NONE	SHEET 1 OF 1 SHEETS	STA. TO STA.
-------------	---------------------	--------------

F.A. RTE.	SECTION	COUNTY	TOTAL SHEETS	SHEET NO.
	BE-703			
ILLINOIS		FED. AID PROJECT		