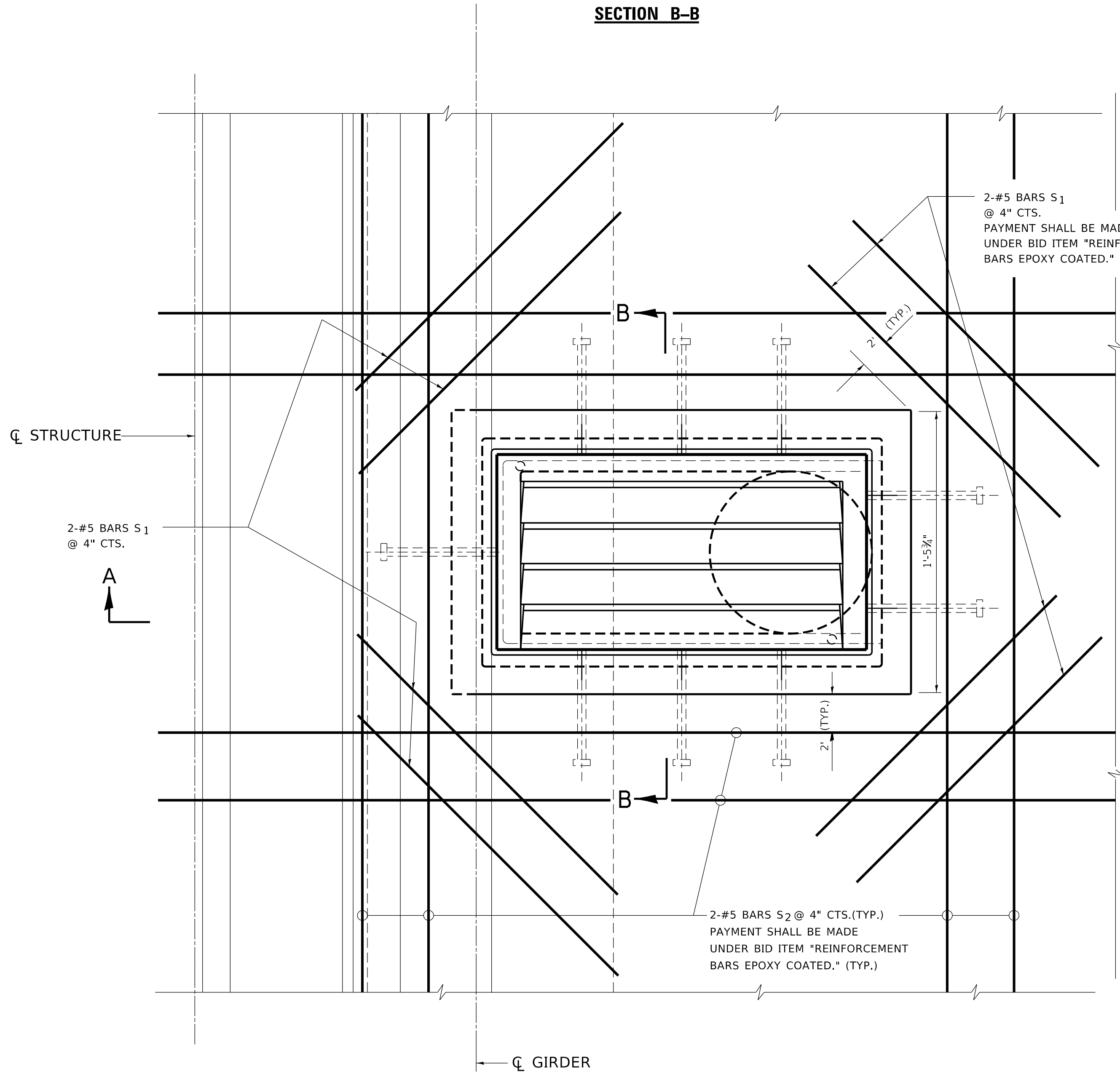


SECTION B-B

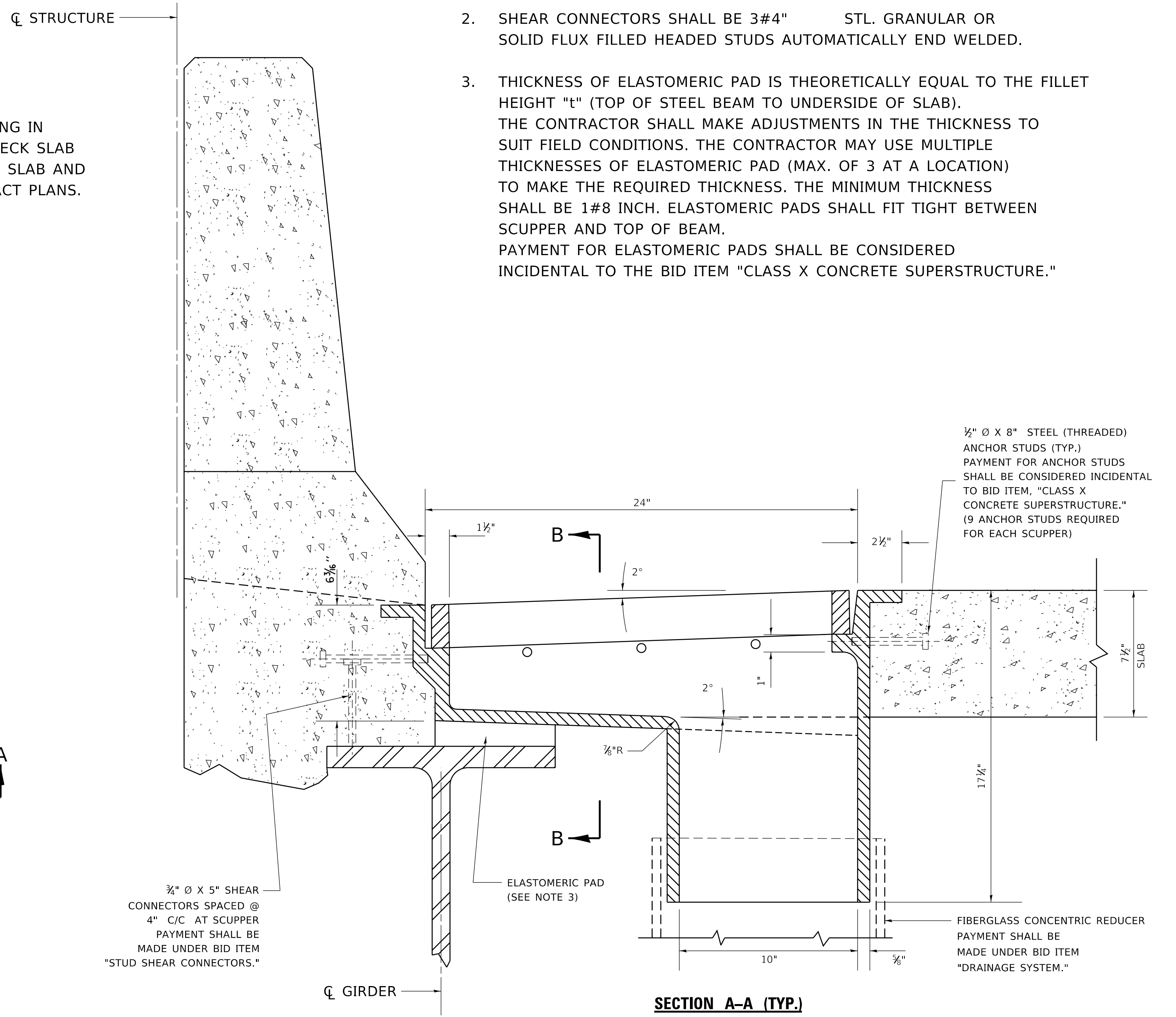
STEEL REINFORCING IN PARAPETS AND DECK SLAB SHOWN ON DECK SLAB AND PARAPET CONTRACT PLANS.



PLAN

REINFORCEMENT BAR SCHEDULE

MARK	NO.	SIZE	LENGTH	SHAPE
S ₁ (E)	8	#5	2'-0"	—
S ₂ (E)	8	#5	5'-0"	—



SECTION A-A (TYP.)

SECTION THRU MEDIAN PARAPET—SHOWN

(SIMILAR IF TYPE "B" SCUPPERS ARE USED AT OUTSIDE PARAPET.)

NOTES:

1. ELASTOMERIC PADS SHALL BE IN ACCORDANCE WITH ARTICLE 718.20, TABLE A OR B OF THE STANDARD SPECIFICATIONS.
2. SHEAR CONNECTORS SHALL BE 3#4" STL. GRANULAR OR SOLID FLUX FILLED HEADED STUDS AUTOMATICALLY END WELDED.
3. THICKNESS OF ELASTOMERIC PAD IS THEORETICALLY EQUAL TO THE FILLET HEIGHT "t" (TOP OF STEEL BEAM TO UNDERSIDE OF SLAB). THE CONTRACTOR SHALL MAKE ADJUSTMENTS IN THE THICKNESS TO SUIT FIELD CONDITIONS. THE CONTRACTOR MAY USE MULTIPLE THICKNESSES OF ELASTOMERIC PAD (MAX. OF 3 AT A LOCATION) TO MAKE THE REQUIRED THICKNESS. THE MINIMUM THICKNESS SHALL BE 1#8 INCH. ELASTOMERIC PADS SHALL FIT TIGHT BETWEEN SCUPPER AND TOP OF BEAM. PAYMENT FOR ELASTOMERIC PADS SHALL BE CONSIDERED INCIDENTAL TO THE BID ITEM "CLASS X CONCRETE SUPERSTRUCTURE."

MODEL: Default
 FILE NAME: p:\u008a\EBID\NTEG Illinois.gov\PI\DOT\Documents\DOT Office\District 1\Projects\DS15422\31CAD\Drawn\CAD\Sheet\CS05.dgn
 3/5/2019 2:02:06 PM User: footem

USER NAME = footem	DESIGNED -	REVISED - M. REZNICEK 10-01-91
PLOT SCALE = 50.0000' / in.	DRAWN -	REVISED -
PLOT DATE = 3/5/2019	CHECKED -	REVISED -
	DATE -	REVISED -

**STATE OF ILLINOIS
DEPARTMENT OF TRANSPORTATION**

EXPRESSWAY UNIT DETAIL			
BRIDGE SCUPPER - TYPE "B" ASSEMBLY			
SCALE: NONE	SHEET 1	OF 1 SHEETS	STA. TO STA.

F.A. RTE.	SECTION	COUNTY	TOTAL SHEETS	SHEET NO.
	CS-05			
ILLINOIS		CONTRACT NO.		
FED. AID PROJECT				