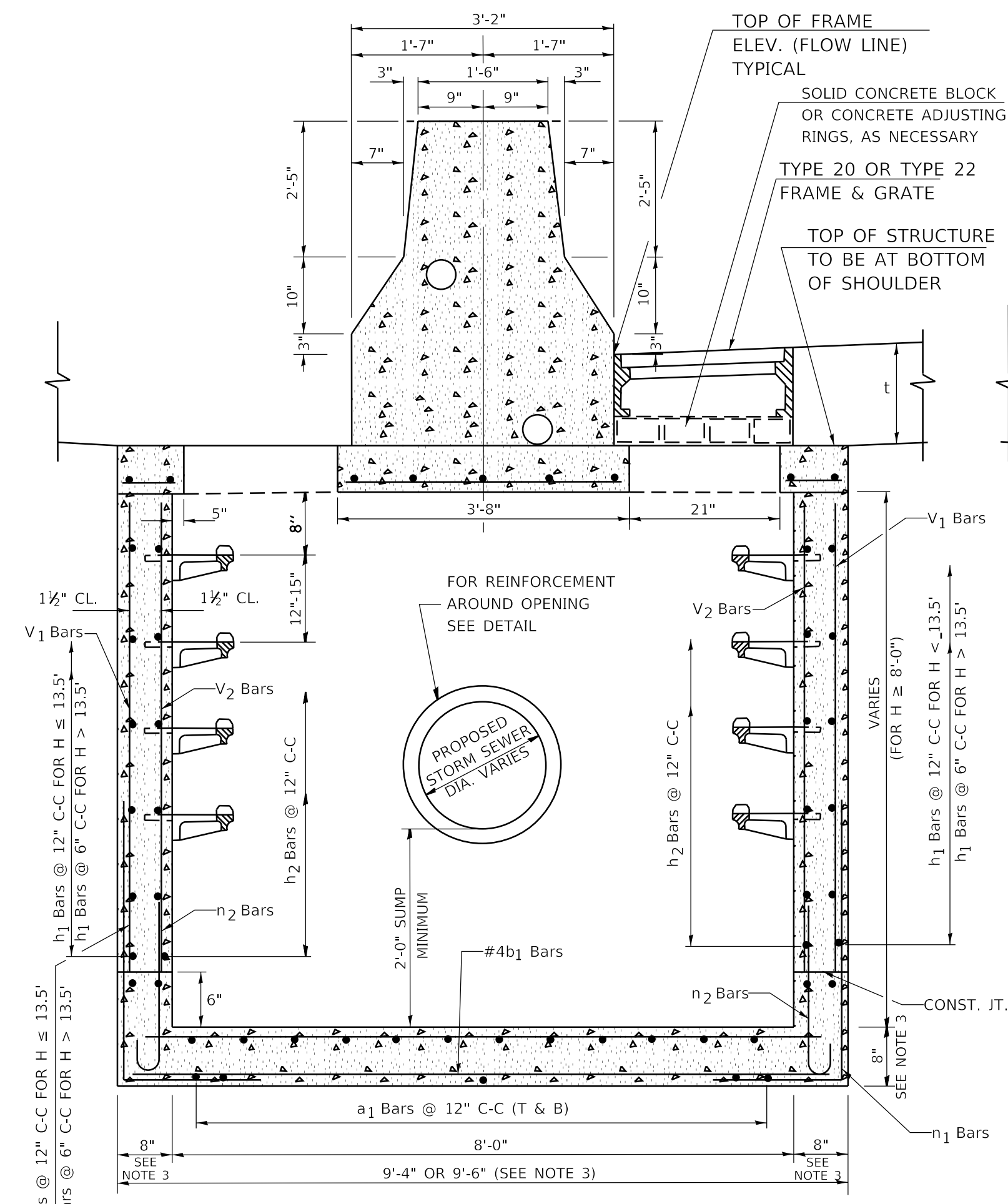
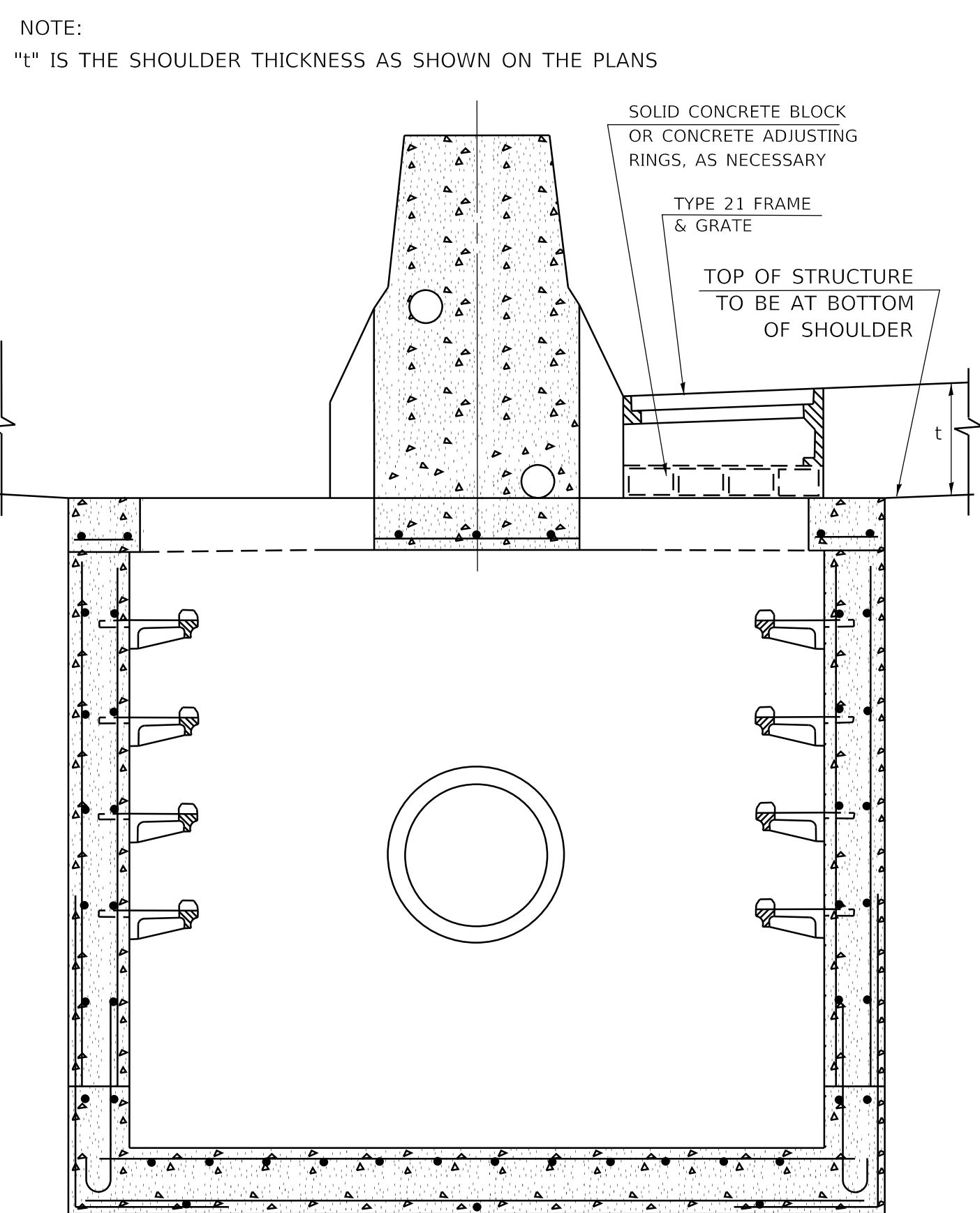


MODEL: D:\default...
 FILE NAME: p:\u0084EBID\NTEG Illinois.gov\p\WIDOT\Documents\DOT Offices\District 1\Projects\DRS\422234\CADData\CAD\sheet\CS10.dgn

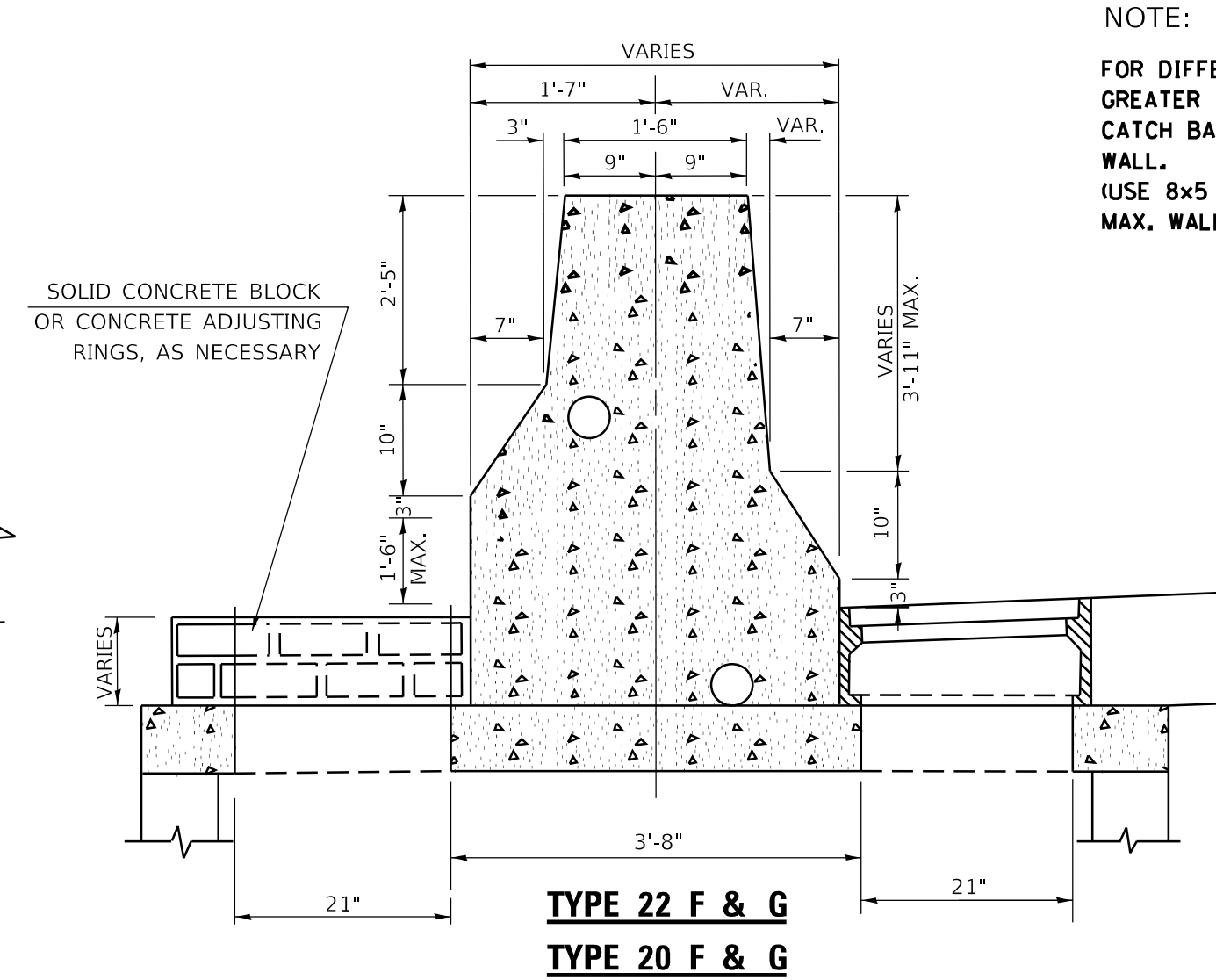


CATCH BASIN 8X5 (TYPE 22 F & G)
CATCH BASIN 8X3 (TYPE 20 F & G)

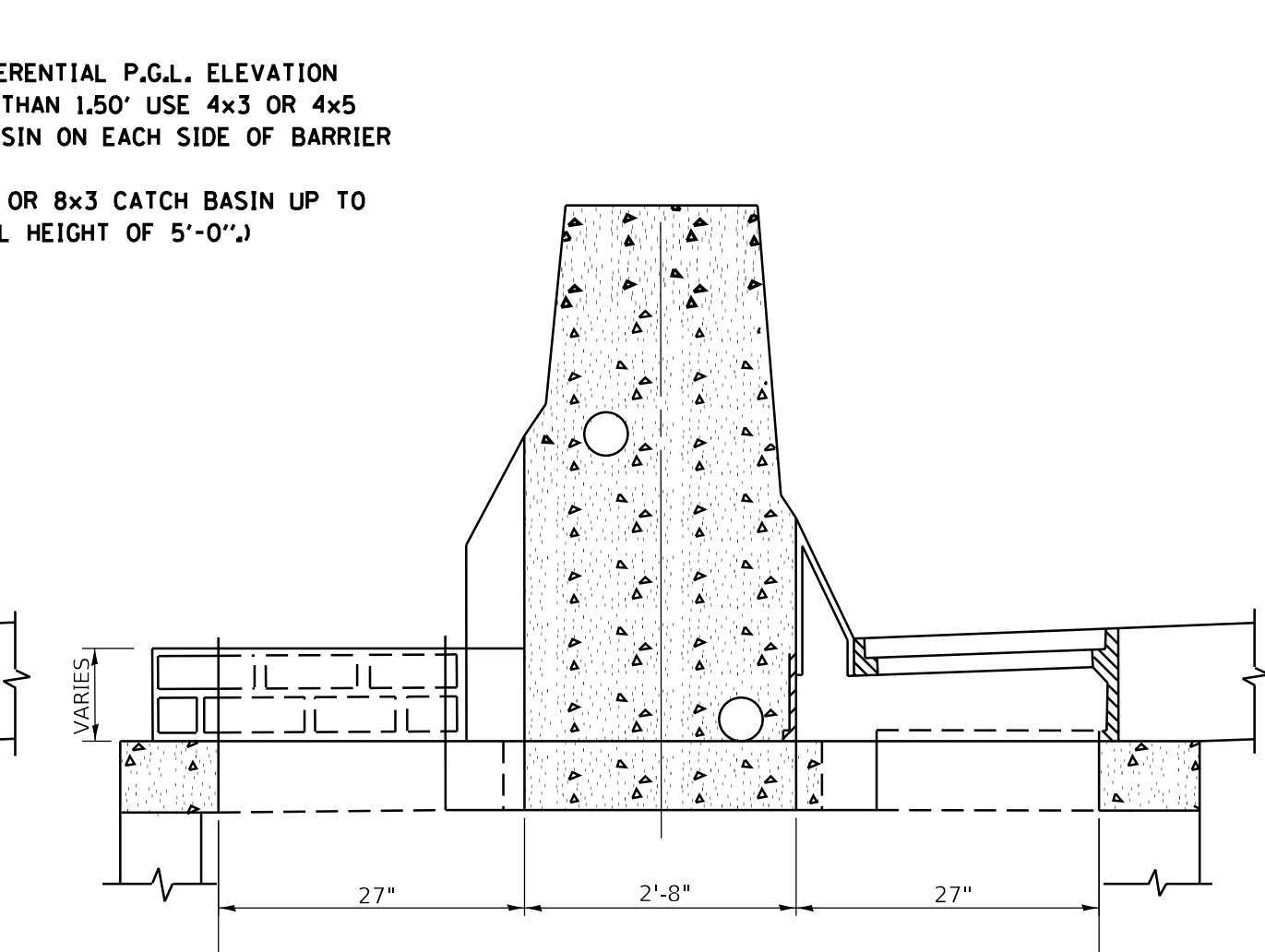


SECTION A-A
SIDE ELEVATION

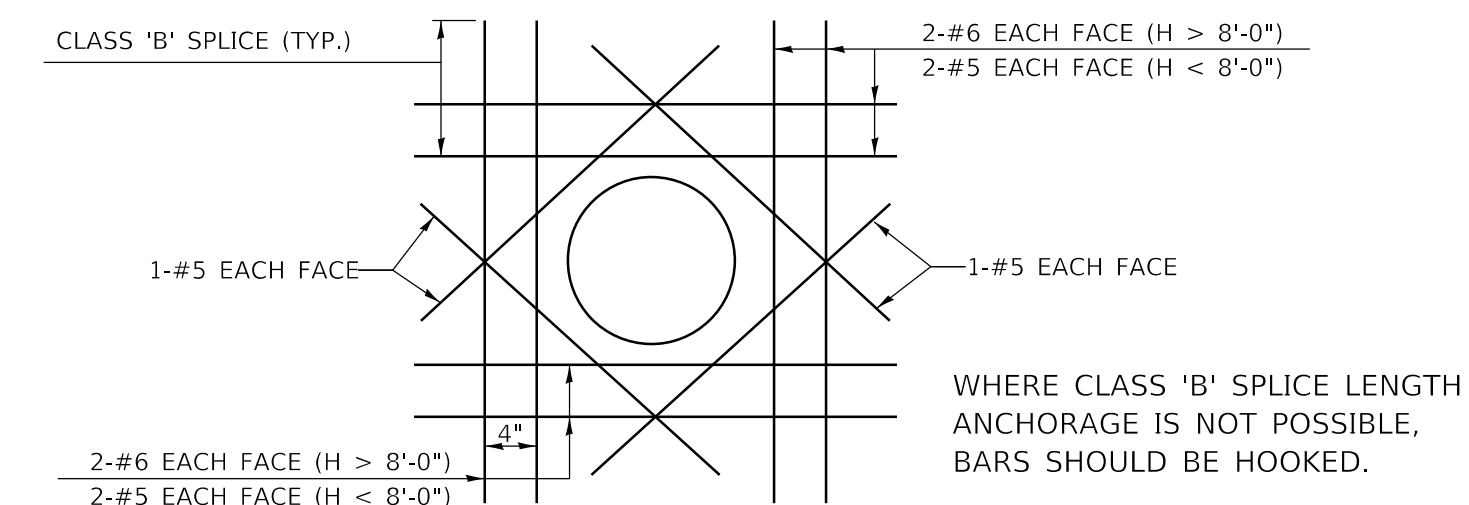
CATCH BASIN 8X3
(TYPE 21 F & G)



DIFFERENTIAL P.G.L.
SIDE ELEVATION

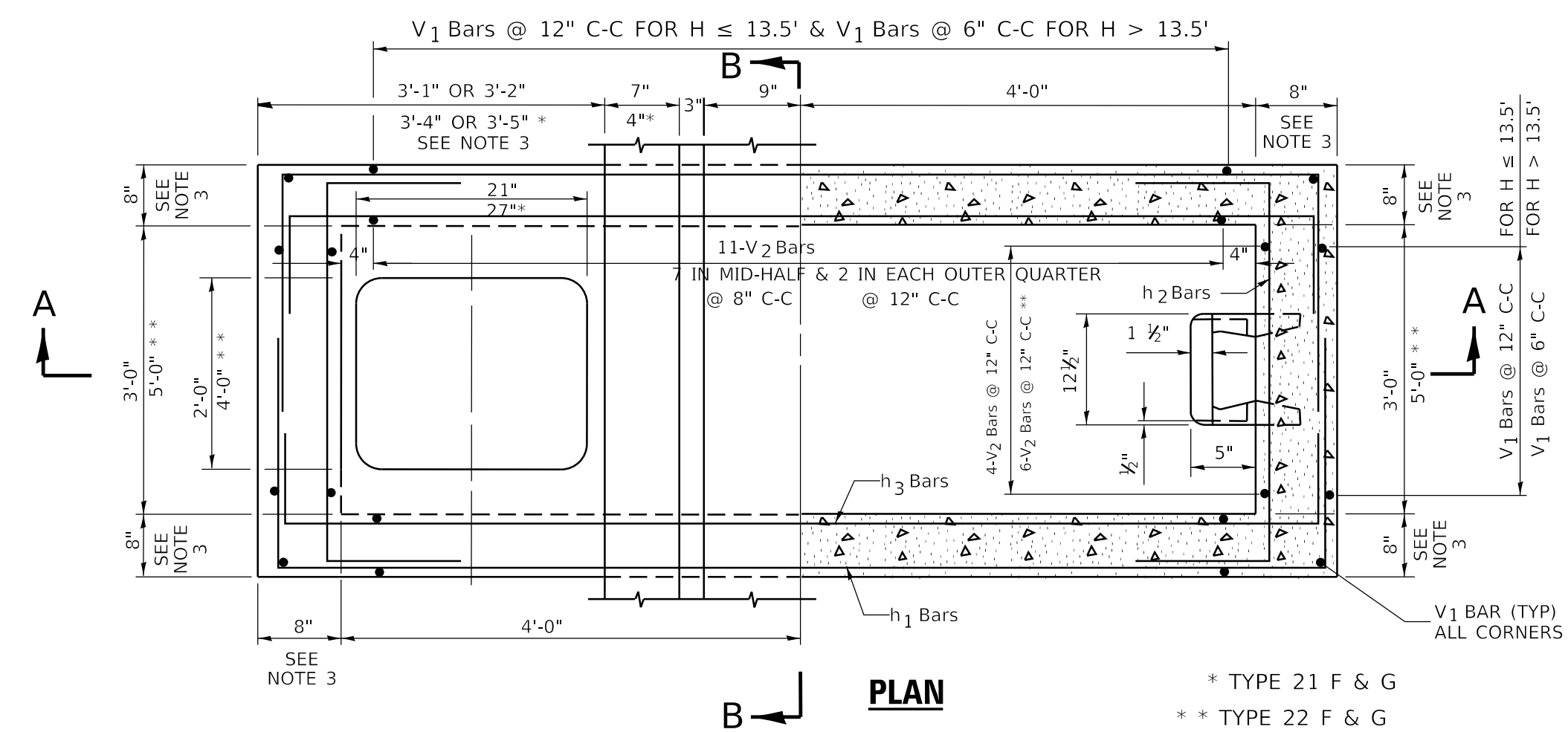


TYPE 21 F & G



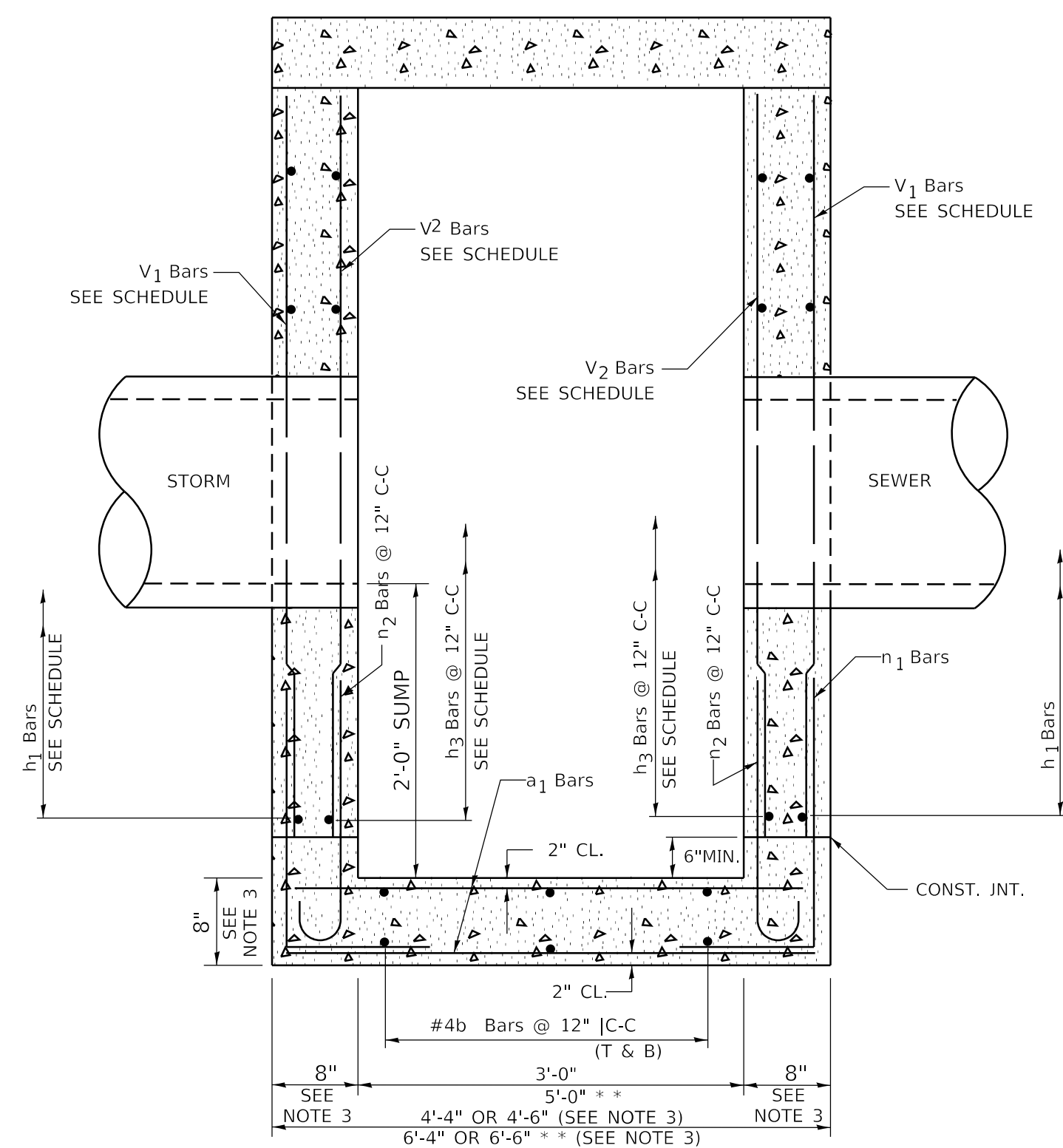
TYPICAL REINFORCEMENT DETAIL AROUND OPENINGS
 (OPENING ≥ 12")

- NOTES:
1. DRAINAGE STRUCTURES SHALL CONFORM TO I.D.O.T. STANDARD 2384 EXCEPT AS NOTED.
 2. STEPS SHALL BE INCLUDED IN ALL STRUCTURES.
 3. WHEN $H \geq 16'-0"$, THE THICKNESS OF WALLS AND BASE SLAB SHALL BE INCREASED TO 9".
 4. ALL STORM SEWER OPENINGS WILL BE CENTERED ON FACE OF WALL THAT PIPE IS ENTERING.
 5. FOR LOCATIONS AND ELEVATIONS FOR ALL STORM SEWER CONNECTIONS REFER TO PLAN SCHEDULES.
 6. THE CONTRACTOR WILL BE REQUIRED TO PROVIDE SHOP DRAWINGS FOR PIPE OPENINGS FOR PIPES ENTERING AT OTHER THAN 90°. FOR BASIS OF PAYMENT REFER TO SPECIAL PROVISIONS.



PLAN

* TYPE 21 F & G
 ** TYPE 22 F & G



SECTION B-B
FRONT ELEVATION

STATE OF ILLINOIS
DEPARTMENT OF TRANSPORTATION

DRAINAGE STRUCTURES CATCH BASINS 8x3 & 8x5
(FOR DEPTHS WHERE H > 8'-0")

SCALE: NONE SHEET 1 OF 1 SHEETS STA. TO STA.

USER NAME = footemj	DESIGNED -	REVISED -
PLOT SCALE = 50.0000' / in.	DRAWN -	REVISED -
PLOT DATE = 3/5/2019	CHECKED -	REVISED -
	DATE -	REVISED -

F.A. RTE.	SECTION	COUNTY	TOTAL SHEETS	SHEET NO.
	CS-10			
ILLINOIS		CONTRACT NO.		
FED. AID PROJECT				