

MODEL: D:\default...  
 FILE NAME: p:\u088\EBID\NTEG...  
 PROJECT: D:\projects\...  
 OFFICE: D:\projects\...

**ROUTE MARKERS**

FOR U.S. ROUTES  
M1-40-2424

FOR ILLINOIS ROUTES  
M1-50-2424

R.R. UNMARKED ROUTES  
SPECIAL 24" x 18" VARIABLE  
4" BLACK LETTERS ON WHITE  
REFLECTIVE BACKGROUND

**ARROWS SIGNS**

M5-1L-2115

M5-1R-2115

M6-1-2115

M6-1-2115

M6-3-2115

**CARDINAL DIRECTION & DETOUR SIGNS**

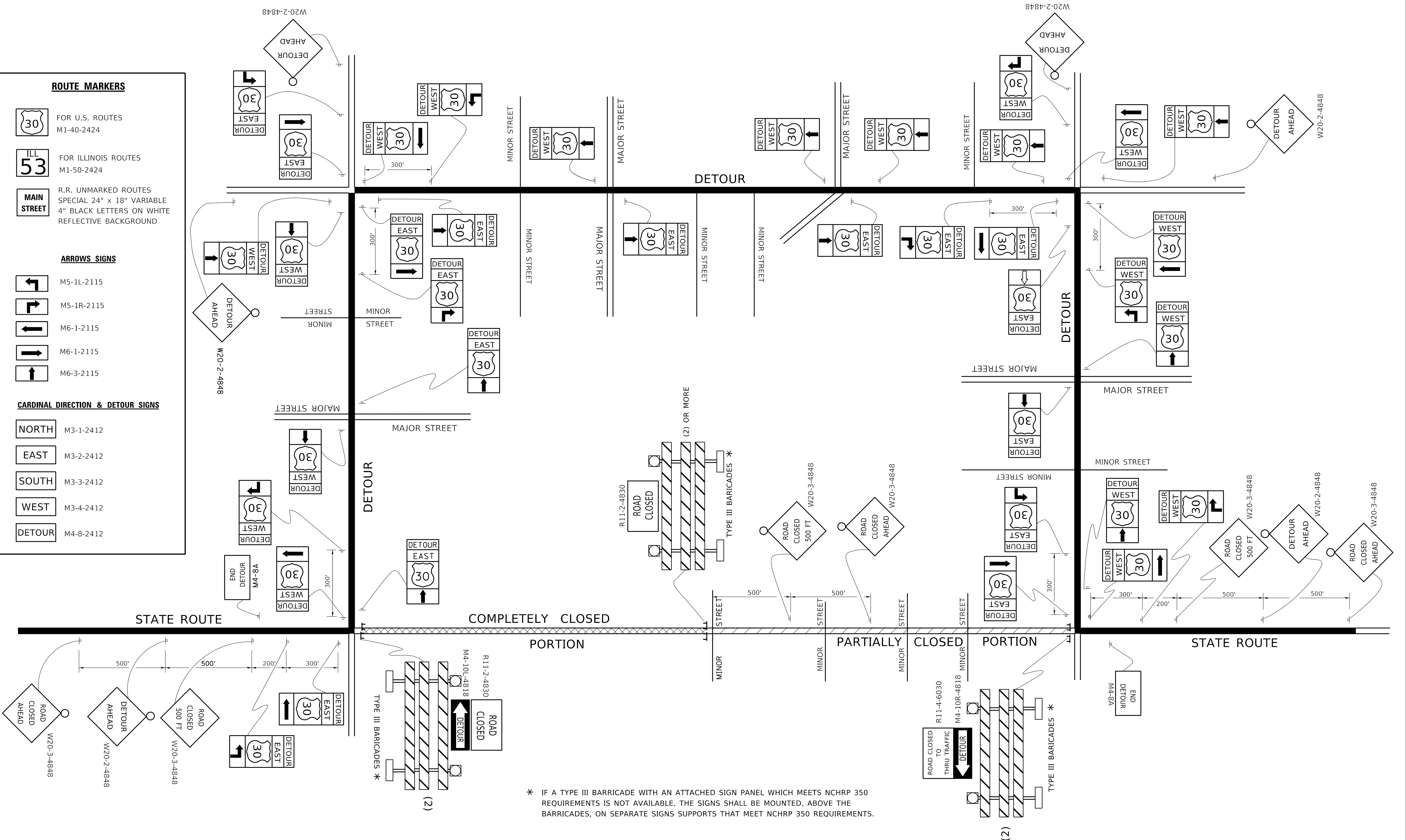
NORTH M3-1-2412

EAST M3-2-2412

SOUTH M3-3-2412

WEST M3-4-2412

DETOUR M4-8-2412



\* IF A TYPE III BARRICADE WITH AN ATTACHED SIGN PANEL WHICH MEETS NCHRP 350 REQUIREMENTS IS NOT AVAILABLE, THE SIGNS SHALL BE MOUNTED, ABOVE THE BARRICADES, ON SEPARATE SIGNS SUPPORTS THAT MEET NCHRP 350 REQUIREMENTS.

USER NAME = footemj	DESIGNED -	REVISED - 10-18-02
PLOT SCALE = 50.0000" / in.	DRAWN -	REVISED - R. BORO 09-14-09
PLOT DATE = 3/4/2019	CHECKED -	REVISED -
	DATE -	REVISED -

**STATE OF ILLINOIS  
 DEPARTMENT OF TRANSPORTATION**

**DETOUR SIGNING  
 FOR CLOSING STATE HIGHWAYS**

SCALE: NONE SHEET 1 OF 1 SHEETS STA. TO STA.

F.A. RTE.	SECTION	COUNTY	TOTAL SHEETS	SHEET NO.
	TC-21			
ILLINOIS		CONTRACT NO.		
FED. AID PROJECT				