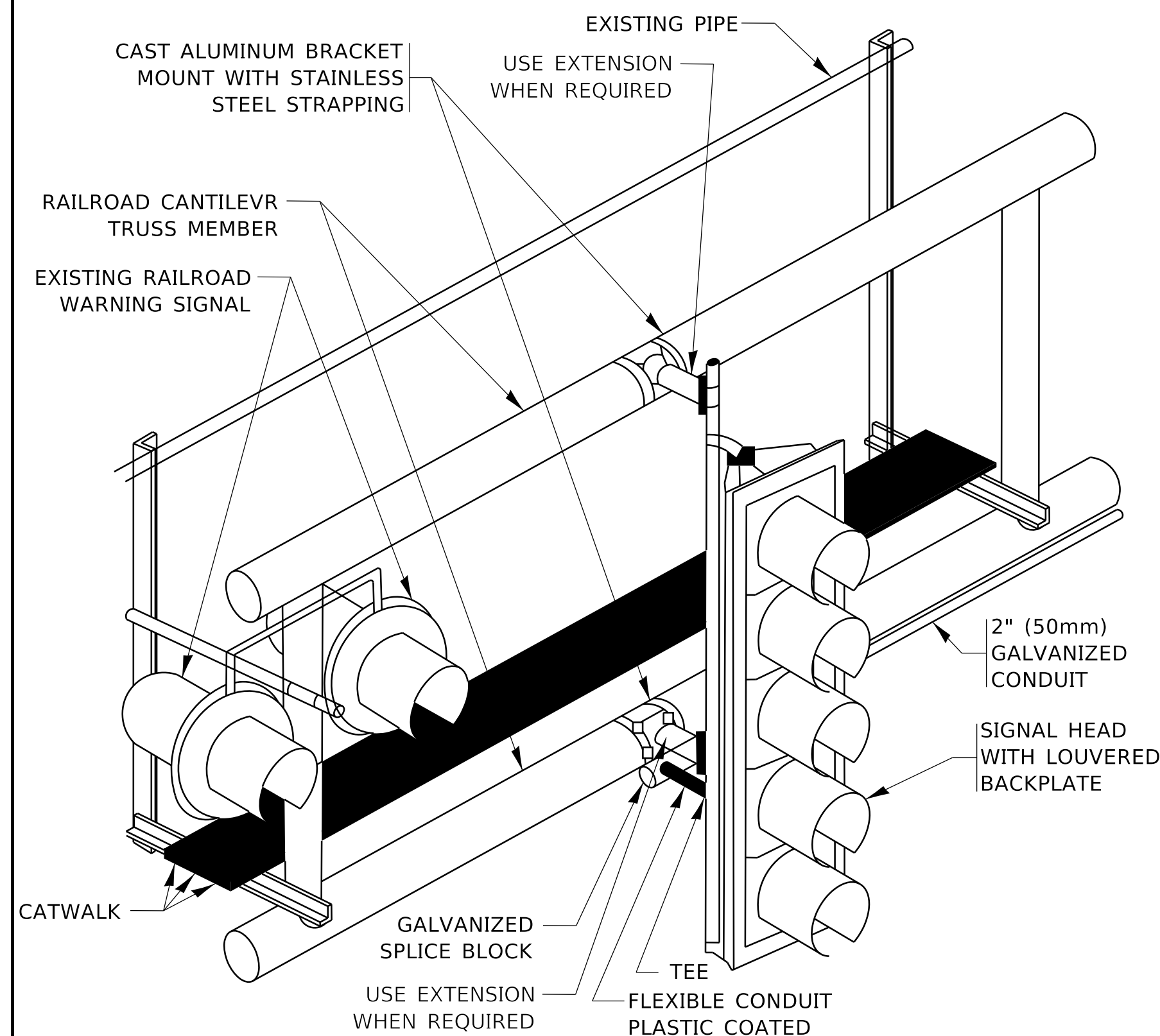


MODEL: Default
 FILE: MainE: public\barroom.dwt: Illinois.gov:PWIDOT\Documents\DOT Office\District 1\Projects\Dist5\22-23\1CAD\Drawn\CAD\sheet323.dgn



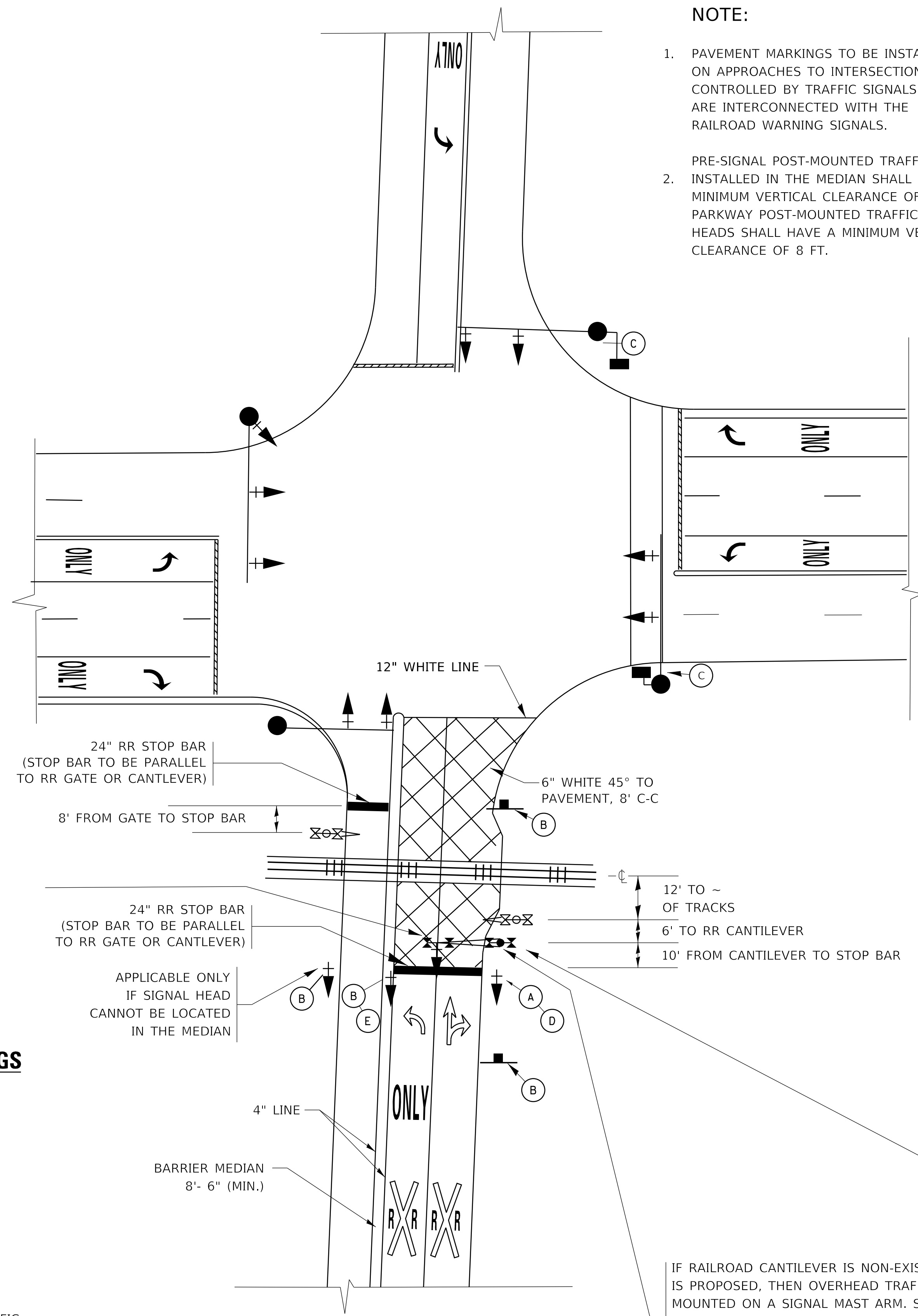
RAILROAD CANTILEVER SIGNAL HEAD MOUNTING
 USE NON-CONDUCTIVE SPACERS BETWEEN THE TRAFFIC SIGNAL EQUIPMENT AND THE RAILROAD CANTILEVER TO PREVENT DISSIMILAR METAL CORROSION
 N.T.S.

SIGNING AND PAVEMENT MARKING AT RAILROAD CROSSINGS

SIGNING AND PAVEMENT MARKING TRAFFIC CONTROL STANDARD (TC-23) HAS BEEN DEVELOPED IN CONSULTATION WITH THE ILLINOIS COMMERCE COMMISSION AND THE U.S. DEPARTMENT OF TRANSPORTATION'S GRADE CROSSING SAFETY TASK FORCE. THIS STANDARD PROVIDES INFORMATION ON UPDATES TO THE PAVEMENT MARKING AND SIGNING DETAILS IN ORDER TO INCORPORATE CHANGES ADOPTED IN THE 2009 NATIONAL MANUAL ON UNIFORM TRAFFIC CONTROL DEVICE (MUTCD). THESE NEW DETAILS HAVE BEEN STUDIED AND TESTED BY THE DEPARTMENT AND ACCEPTED BY THE ILLINOIS COMMERCE COMMISSION.

THIS APPLIES TO PROJECTS WHICH INCLUDE RAILROAD INTERCONNECTED TRAFFIC SIGNALS, WITH OR WITHOUT PRE-SIGNALS. THIS STANDARD ALSO APPLIES TO NON-SIGNALIZED INTERSECTIONS THAT ARE WITHIN 81 FEET OF A RAILROAD GRADE CROSSING. THE ILLINOIS SUPPLEMENT TO THE MUTCD SHOULD BE CONSULTED FOR ADDITIONAL INFORMATION ON SIGN REQUIREMENTS AT NON-SIGNALIZED INTERSECTIONS NEAR RAILROAD GRADE CROSSINGS.

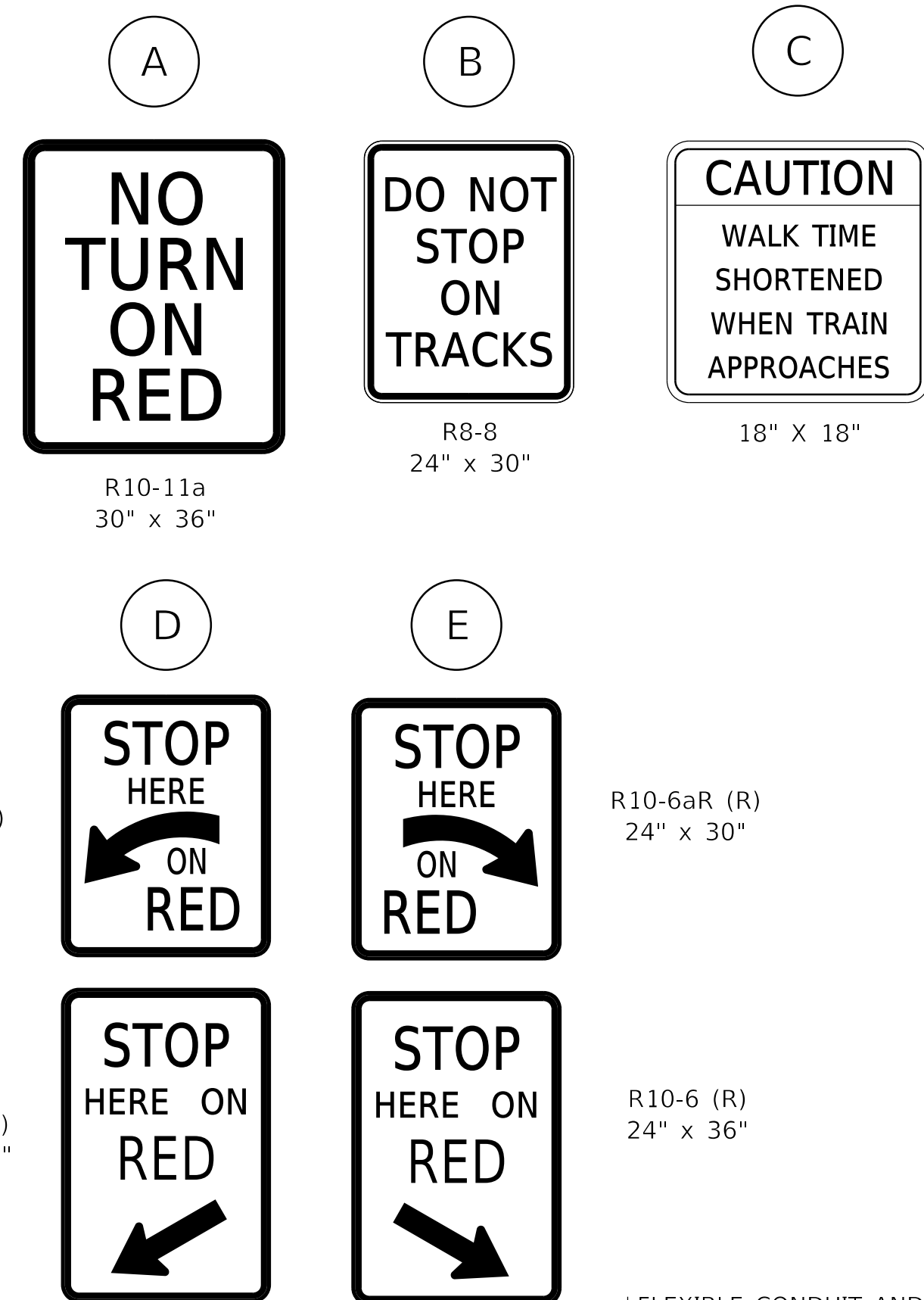
THESE DETAILS WILL BE INCLUDED IN A FUTURE UPDATE TO THE BUREAU OF OPERATIONS TRAFFIC POLICIES AND PROCEDURES MANUAL.



SIGNALIZED INTERSECTION WITH NEAR-SIDE TRAFFIC SIGNAL

NOTE:

- PAVEMENT MARKINGS TO BE INSTALLED ONLY ON APPROACHES TO INTERSECTIONS CONTROLLED BY TRAFFIC SIGNALS WHICH ARE INTERCONNECTED WITH THE RAILROAD WARNING SIGNALS.
- PRE-SIGNAL POST-MOUNTED TRAFFIC SIGNAL HEADS INSTALLED IN THE MEDIAN SHALL HAVE A MINIMUM VERTICAL CLEARANCE OF 4.5 FT. PARKWAY POST-MOUNTED TRAFFIC SIGNAL HEADS SHALL HAVE A MINIMUM VERTICAL CLEARANCE OF 8 FT.

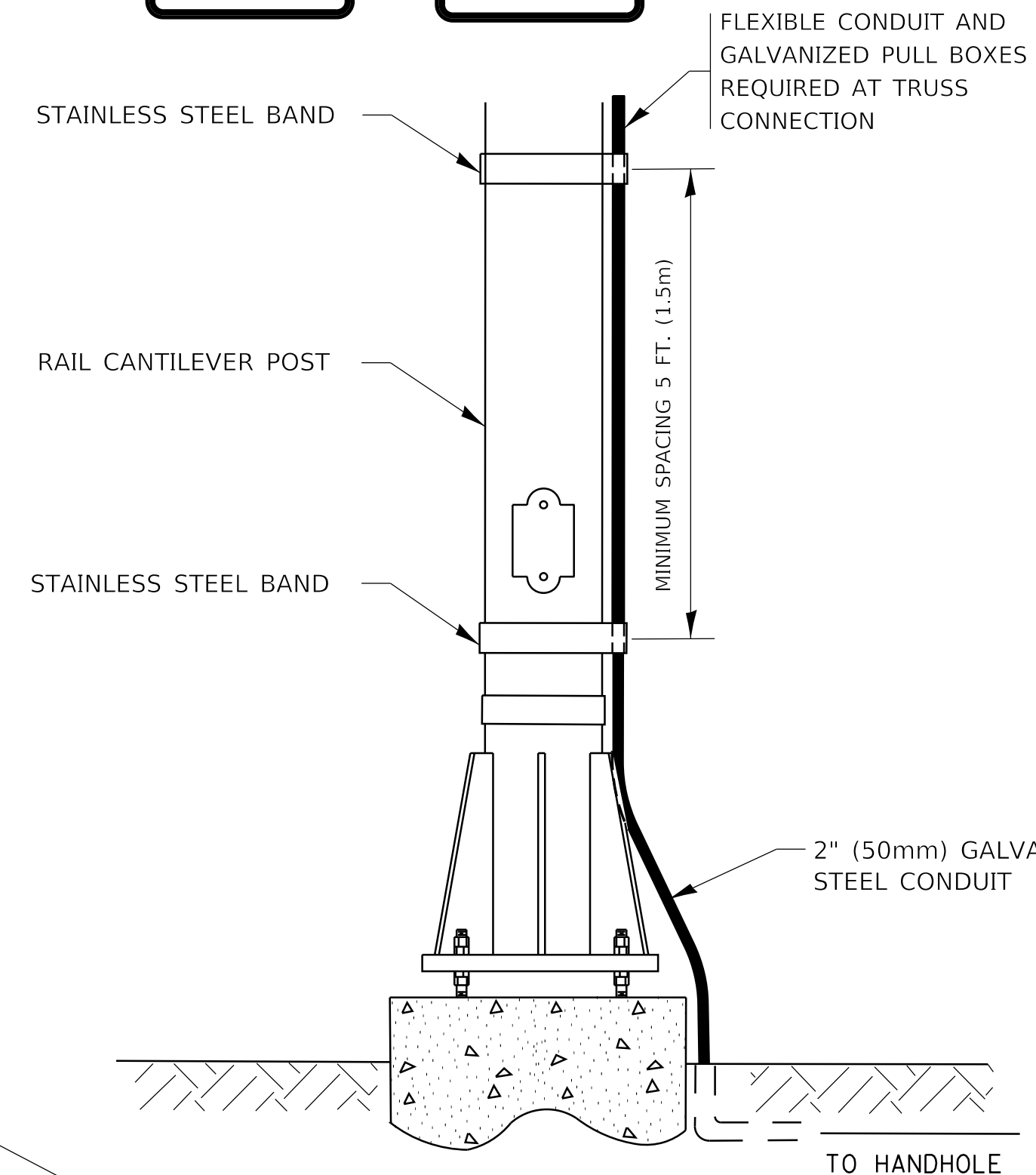


R10-6a (L)
24" x 30"

R10-6aR (R)
24" x 30"

R10-6 (L)
24" x 36"

R10-6 (R)
24" x 36"



SIGNAL CONDUIT CONNECTION TO RAIL CANTILEVER DETAIL

USE NON-CONDUCTIVE SPACERS BETWEEN THE TRAFFIC SIGNAL EQUIPMENT AND THE RAILROAD CANTILEVER TO PREVENT DISSIMILAR METAL CORROSION.

ALL DIMENSIONS ARE IN INCHES (MILLIMETERS) UNLESS OTHERWISE SHOWN.

IF RAILROAD CANTILEVER IS NON-EXISTANT AND NONE IS PROPOSED, THEN OVERHEAD TRAFFIC SIGNAL TO BE MOUNTED ON A SIGNAL MAST ARM. SIGNAL MAST ARM AND SIGNAL HEADS SHALL BE INSTALLED AS CLOSE AS PRACTICABLE TO THE RAILROAD TRACKS WITHOUT OBSTRUCTING ANY RAILROAD WARNING DEVICES. SIGNAL MAST ARM SHALL BE AT LEAST 12 FT. FROM NEAREST RAIL.

USER NAME = footemj	DESIGNED -	REVISED - 02-25-11
	DRAWN -	REVISED - 04-26-12
PLOT SCALE = 50.0000 ' / in.	CHECKED -	REVISED - A.R. 07-11-16
PLOT DATE = 8/22/2019	DATE -	REVISED - D.G. 8-22-19

STATE OF ILLINOIS
 DEPARTMENT OF TRANSPORTATION

TYPICAL SUPPLEMENTAL SIGNING AND PAVEMENT MARKING
 TREATMENT FOR RAILROAD CROSSINGS

SCALE: NONE SHEET 1 OF 2 SHEETS STA. TO STA.

F.A. RTE.	SECTION	COUNTY	TOTAL SHEETS	SHEET NO.
	TC-23			
ILLINOIS		FED. AID PROJECT		