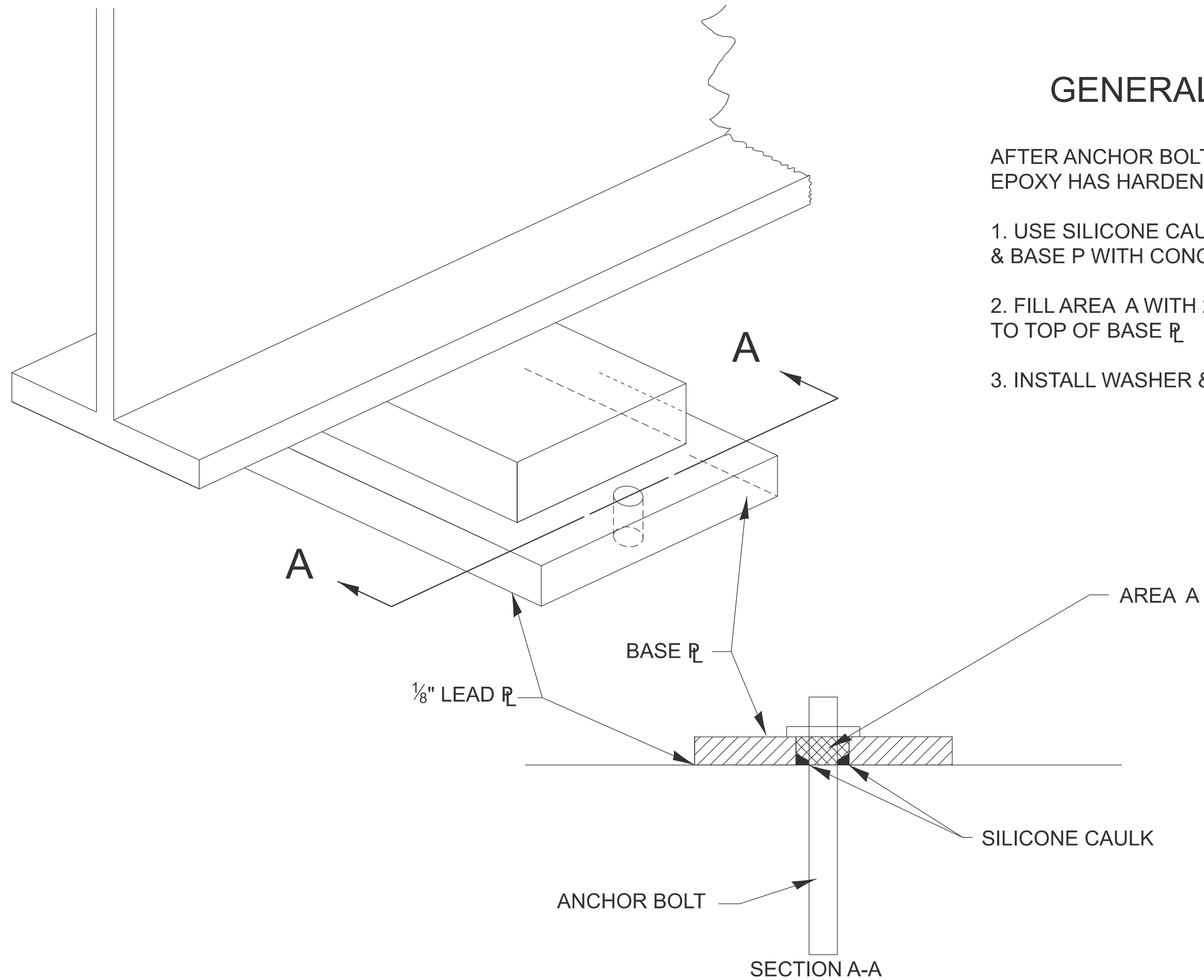


GENERAL NOTES

AFTER ANCHOR BOLT IS INSTALLED & EPOXY HAS HARDENED

1. USE SILICONE CAULK TO SEAL LEAD P & BASE P WITH CONCRETE
2. FILL AREA A WITH 2 PART EPOXY, TO TOP OF BASE P
3. INSTALL WASHER & NUT



All dimensions are in inches
unless otherwise noted.

USER NAME = thomas,cox	DESIGNED -	REVISED -
	DRAWN -	REVISED -
	CHECKED -	REVISED -
PLOT DATE = 9/23/2025	DATE -	REVISED -

STATE OF ILLINOIS
DEPARTMENT OF TRANSPORTATION

BEARING PLATE DETAIL

SCALE: NOT TO SCALE	SHEET 000	OF	SHEETS	STA.	TO STA.
---------------------	-----------	----	--------	------	---------

F.A. RTE.	SECTION	COUNTY	TOTAL SHEETS	SHEET NO.
				0
DISTRICT 4 DETAIL NO. 505001		CONTRACT NO.		
ILLINOIS FED. AID PROJECT				

MODEL: D4-505001
FILE NAME: c:\pw_work\pwidot\illinois.gov_thomas.cox@illinois.gov\d105594\ID4-505001.dgn