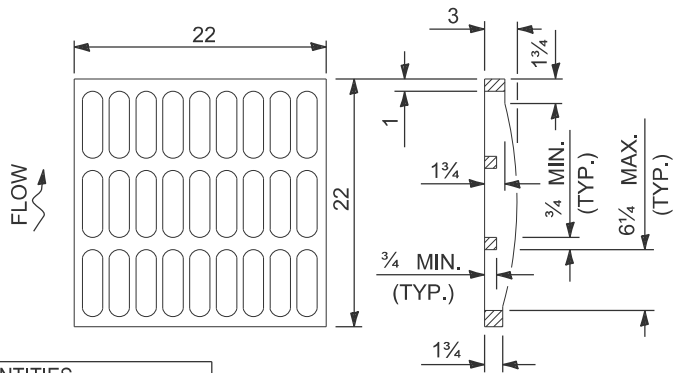
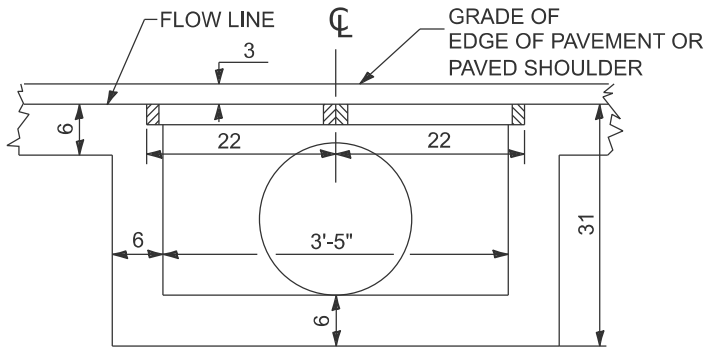


DESIGNER NOTES:  
MODEL: D4-606106 1. INCLUDE STATE STANDARD 420001.  
FILE NAME: c:\pwworking\roadwork\106106\106106.DWG  
ITEM IS CLASS 2 CONCRETE GUTTER SPECIAL.

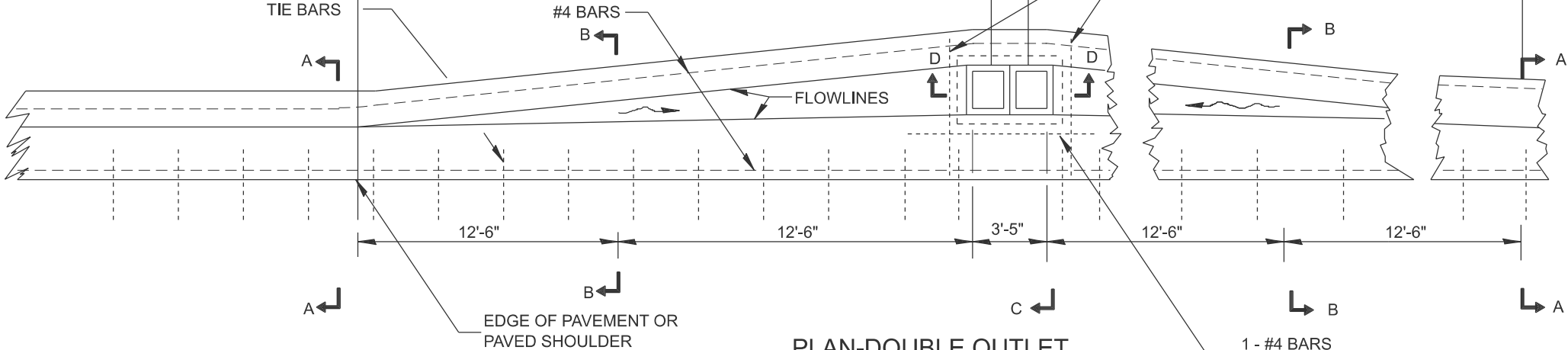
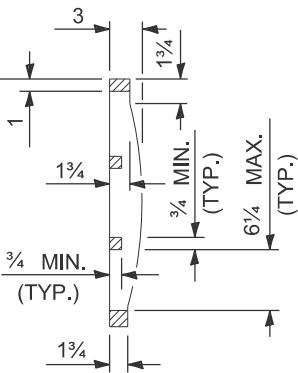
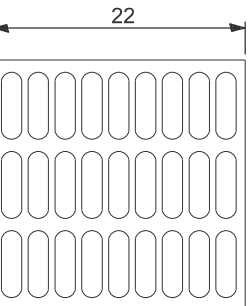
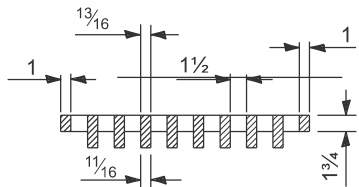
QUANTITIES			
CALC. BY:		DATE:	
CHECKED BY:		DATE:	
QUANTITY CALCULATIONS ARE ON FILE AT THE DISTRICT 4 OFFICE; BUREAU OF PROJECT IMPLEMENTATION; DOCUMENTATION SECTION			



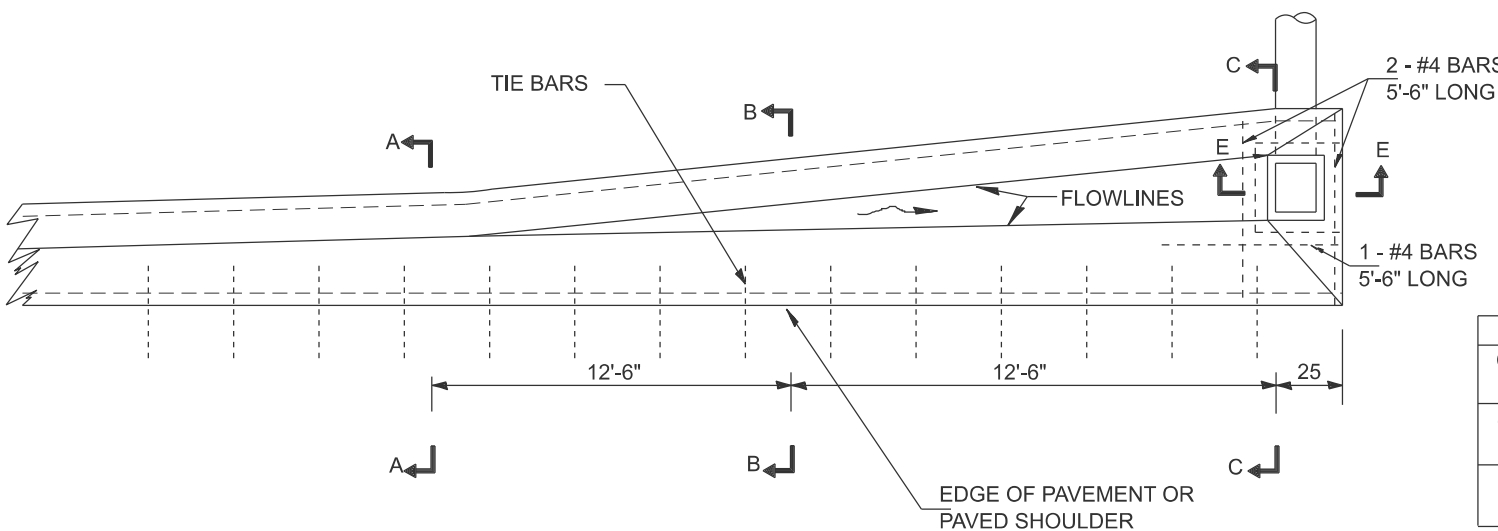
GRATE TYPE A



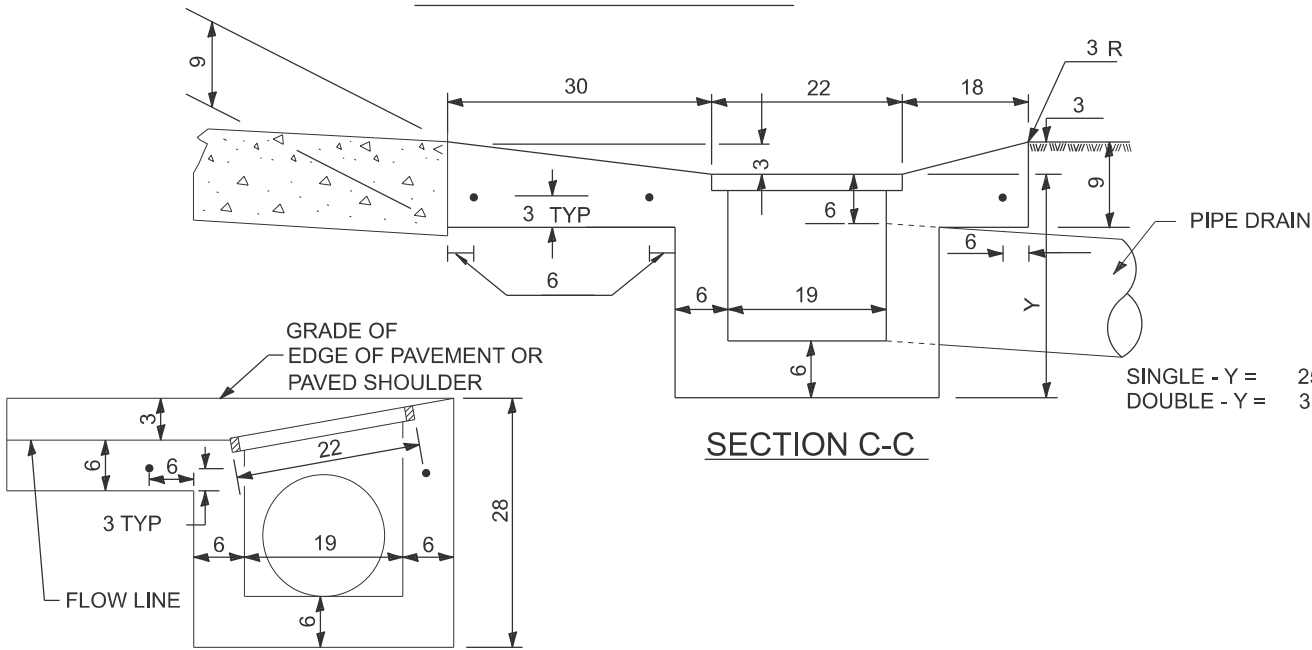
SECTION D-D  
(DOUBLE INLET)



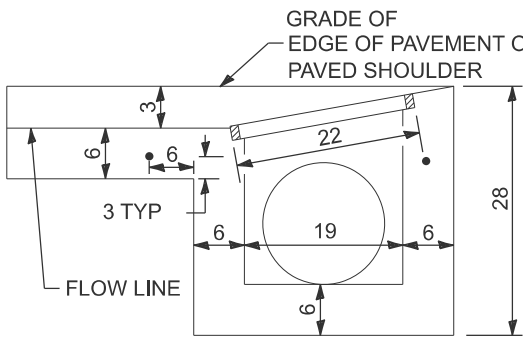
PLAN-DOUBLE OUTLET



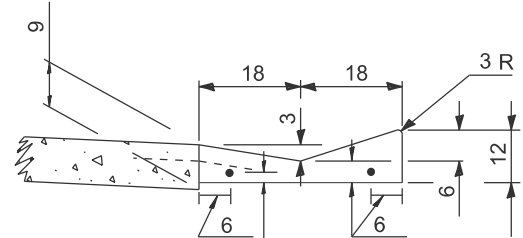
PLAN-SINGLE OUTLET



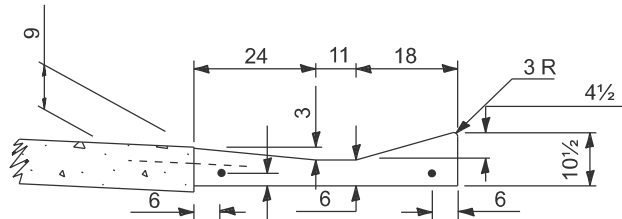
SECTION C-C



SECTION E-E



SECTION A-A



SECTION B-B

QUANTITIES

MATERIAL	SINGLE	DOUBLE
CONCRETE - (cu.yd.)	( )	( )
CAST IRON GRATE - Ea. 125 lbs.	1	2
PIPE DRAIN - DIA. (in.)	15	18

GENERAL NOTES

The gutter outlet shall be tied to the pavement in accordance with details for longitudinal construction joint shown on Standard 420001.

Tie bars shall be No. 6x24 at 36" centers unless otherwise shown.

If the average grade of pavement for the distance A-D exceeds 2 %, this distance shall be increased 6' for each 1 % increase in grade.

All dimensions are in inches unless otherwise noted.

STATE OF ILLINOIS  
DEPARTMENT OF TRANSPORTATION

OUTLET TYPE 1 (SPECIAL) FOR  
TYPE A GUTTER (SPECIAL)

SCALE: NOT TO SCALE SHEET 000 OF SHEETS STA. TO STA.

F.A. RTE.	SECTION	COUNTY	TOTAL SHEETS	SHEET NO.
				0
DISTRICT 4 DETAIL NO. 606106		CONTRACT NO.		
ILLINOIS		FED. AID PROJECT		