

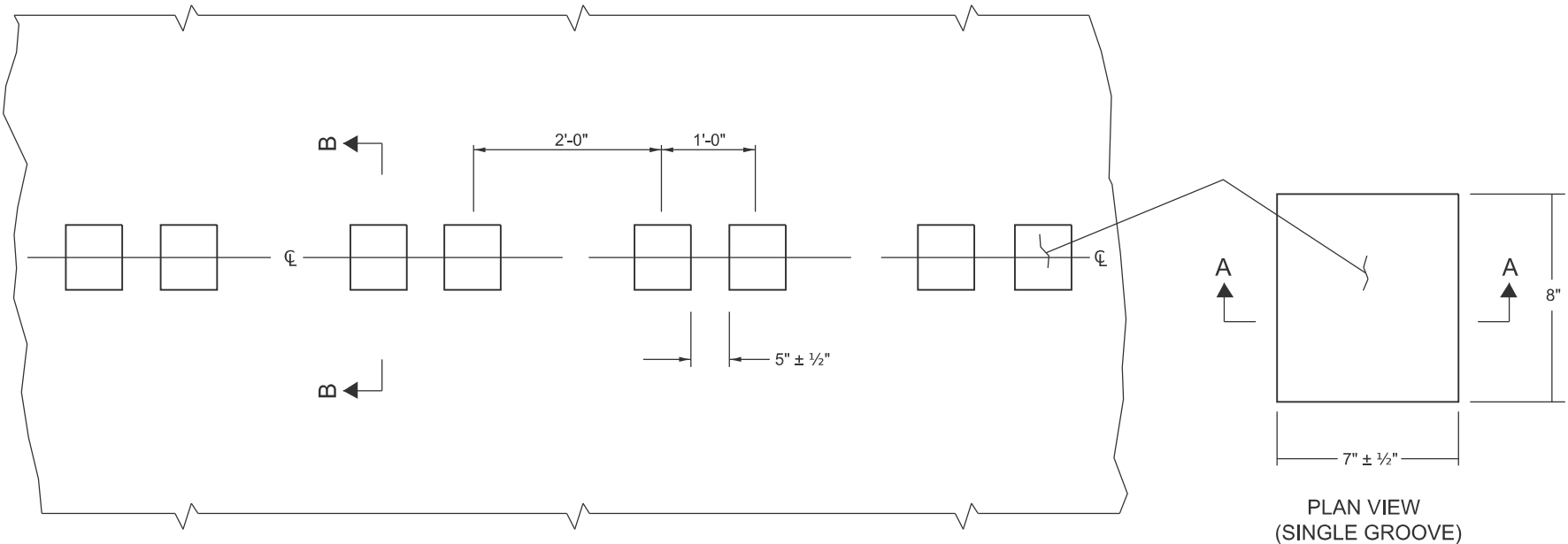
GENERAL NOTES

DETAILS OF CONSTRUCTION SHOWN ON THIS DRAWING SHALL CONFORM TO THE PERTINENT REQUIREMENTS OF THE STANDARD SPECIFICATIONS AND APPLICABLE SPECIAL PROVISIONS.

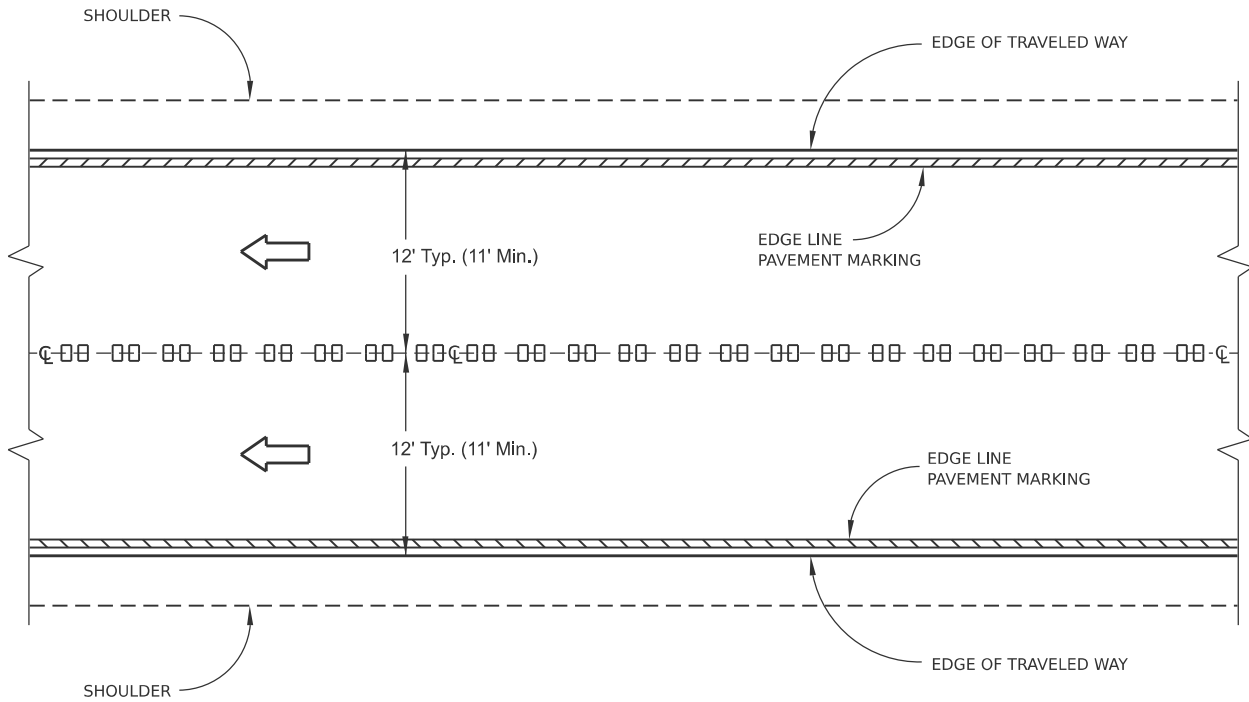
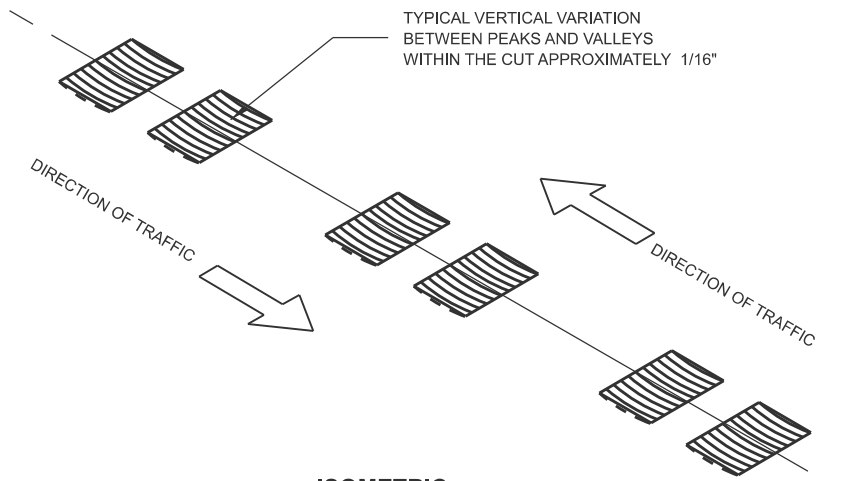
DO NOT MILL CENTER LINE GROOVES THROUGH ANY INTERSECTION, MARKED CROSSWALK, OR NON-MOTORIZED PATH CROSSING.

INSTALL PERMANENT PAVEMENT MARKINGS AFTER THE GROOVES ARE INSTALLED.

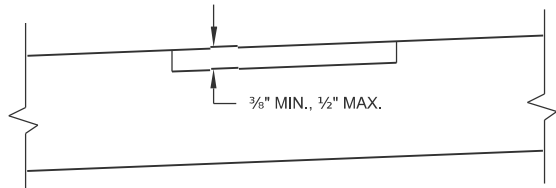
- ① CENTERLINE GROOVES MAY BE OMITTED IN AREAS WITH HIGH CONCENTRATIONS OF DRIVEWAYS, WHEN DIRECTED BY THE ENGINEER.



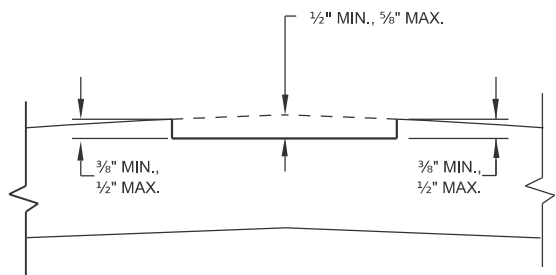
PLAN VIEW
CENTER LINE WITH GROOVES
PLACEMENT DETAIL FOR MILLED RUMBLE STRIP



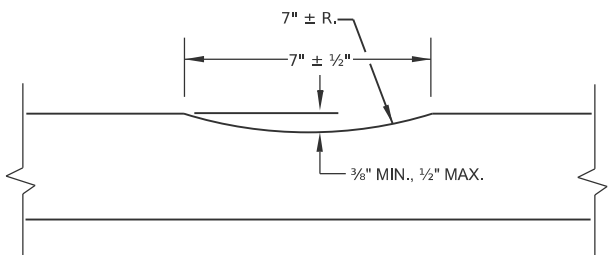
CENTER LINE GROOVES ON TWO-WAY ROADWAYS



SECTION B-B
SUPERELEVATED ROADWAY



SECTION B-B
CROWNED ROADWAY



SECTION A-A

MODEL: D4-780101-01
FILE NAME: c:\pawork\pawork\illinois.gov\thomas.cox\1055944\D4-780101.dgn

USER NAME = thomas.cox	DESIGNED -	REVISED -
	DRAWN -	REVISED -
	CHECKED -	REVISED -
PLOT DATE = 9/23/2025	DATE -	REVISED -

STATE OF ILLINOIS
DEPARTMENT OF TRANSPORTATION

CENTER LINE RUMBLE STRIP DETAILS			
SCALE: NOT TO SCALE	SHEET 000 1 OF 2 SHEETS	STA.	TO STA.

F.A. RTE.	SECTION	COUNTY	TOTAL SHEETS	SHEET NO.
				0
DISTRICT 4 DETAIL NO. 780101		CONTRACT NO.		
ILLINOIS		FED. AID PROJECT		