

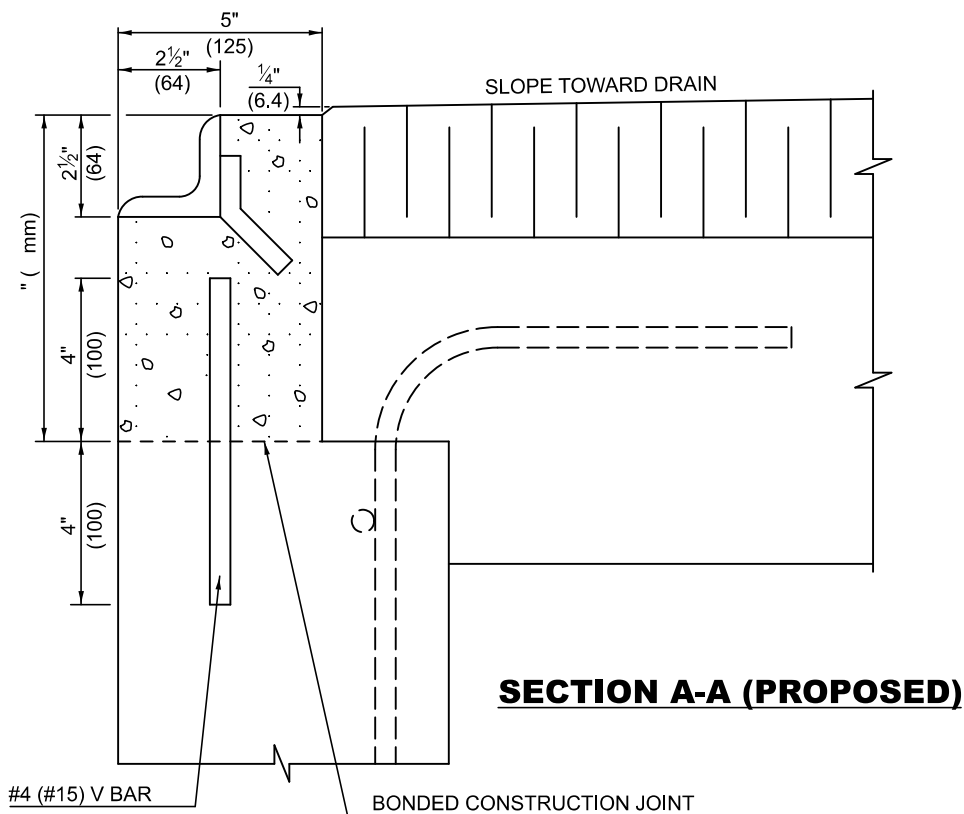
**PLAN VIEW - INLET BOX**

**GENERAL NOTES**

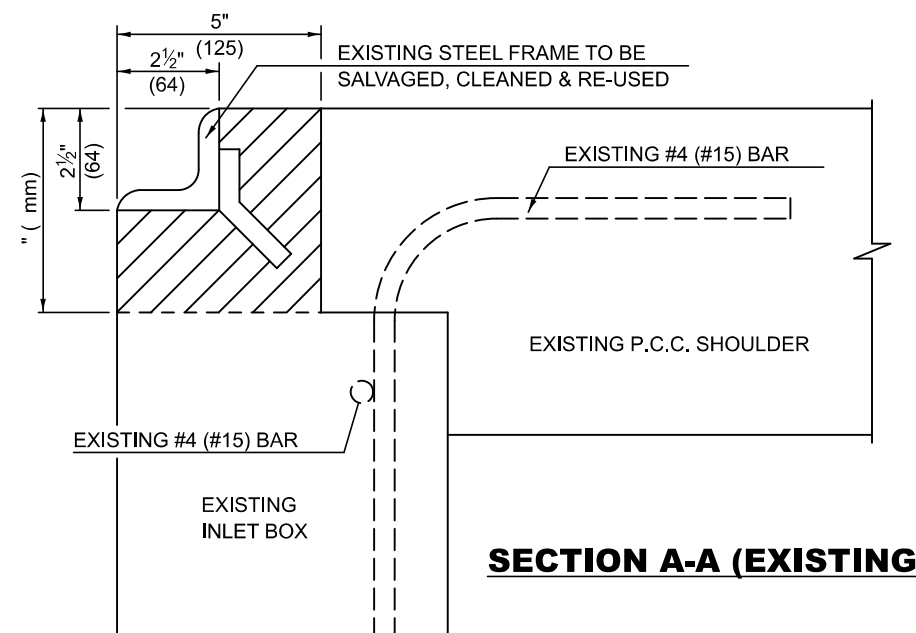
THIS WORK SHALL BE DONE IN ACCORDANCE WITH THE APPLICABLE PORTIONS OF SECTION 602 OF THE STANDARD SPECIFICATIONS.

THIS WORK WILL BE PAID FOR AT THE CONTRACT UNIT PRICE EACH FOR "INLETS TO BE ADJUSTED" WHICH SHALL INCLUDE ALL LABOR, EQUIPMENT & MATERIAL NECESSARY TO COMPLETE THE WORK.

ESTIMATE QUANTITIES:  
 CONCRETE REMOVAL - CU. YD. (m<sup>3</sup>)  
 CLASS S.I. CONCRETE - CU. YD. (m<sup>3</sup>)  
 REINFORCEMENT BARS - LBS. (kg)



**SECTION A-A (PROPOSED)**



**SECTION A-A (EXISTING)**

**LEGEND**

- CONCRETE REMOVAL
- CLASS S.I. CONCRETE

Note: All dimensions are in INCHES (millimeters) unless otherwise shown.

**DISTRICT 5 DETAIL NO. 60260100**

MODEL: SHT\_PLAN  
FILE NAME: C:\Bentley\CONNECT101\Organizer\Bor-Chill\DOT\_Standards\Call\DOT\_Sheets.cad

USER NAME = Eric.Thomas	DESIGNED -	REVISED - 12/06
PLOT SCALE = \$\$SCALE\$	DRAWN -	REVISED -
PLOT DATE = 12/7/2022	CHECKED -	REVISED -
	DATE -	REVISED -

**STATE OF ILLINOIS  
DEPARTMENT OF TRANSPORTATION**

**INLETS TO BE ADJUSTED (PCC SHOULDER)**

SCALE: SHEET 1 OF 1 SHEETS STA. TO STA.

F.A. RTE.	SECTION	COUNTY	TOTAL SHEETS	SHEET NO.
CONTRACT NO.				
ILLINOIS FED. AID PROJECT				