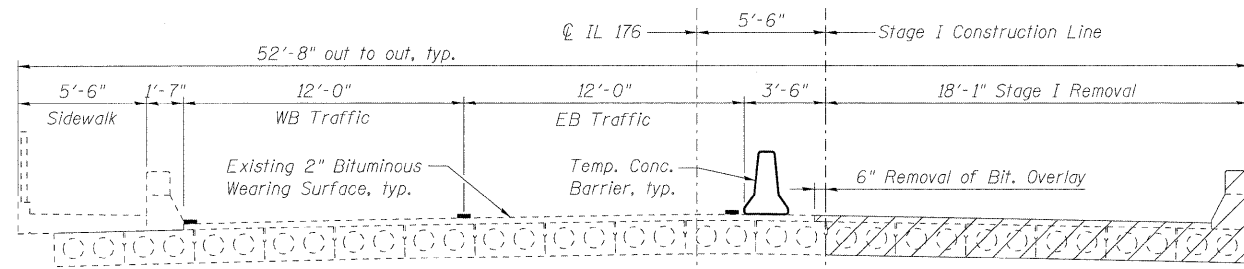
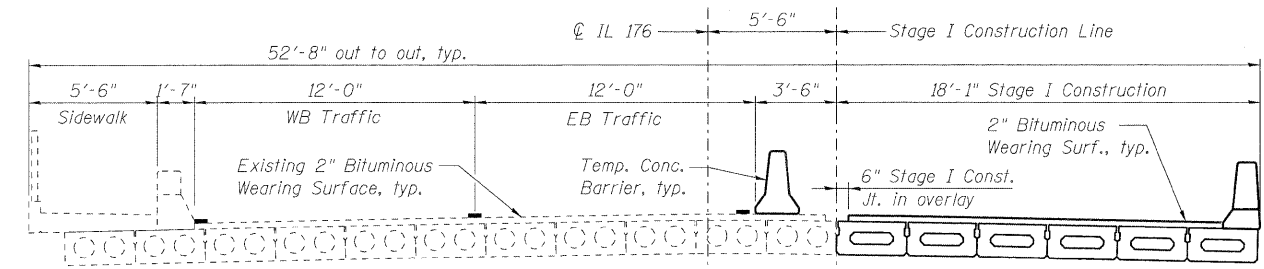


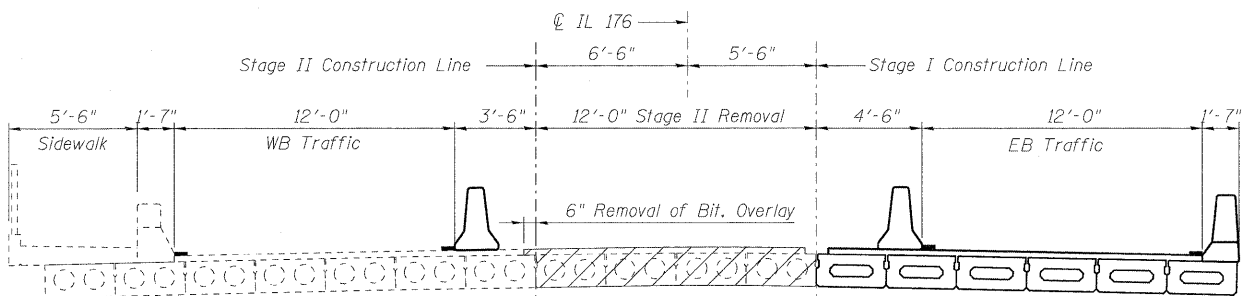
STATE OF ILLINOIS
DEPARTMENT OF TRANSPORTATION



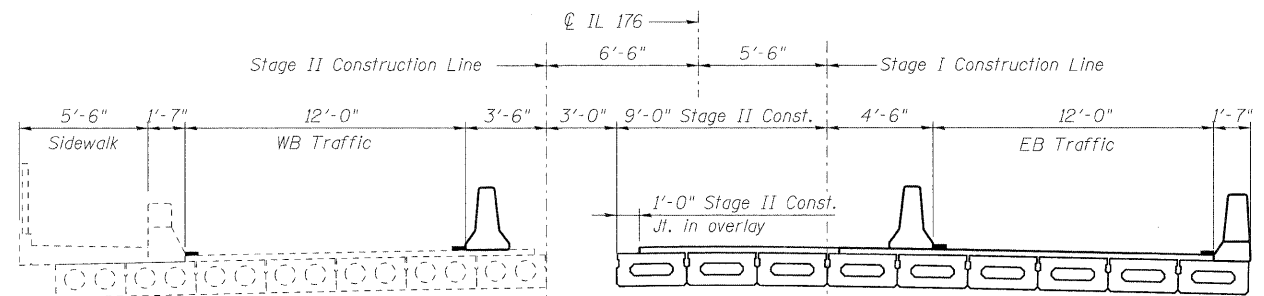
STAGE I REMOVAL



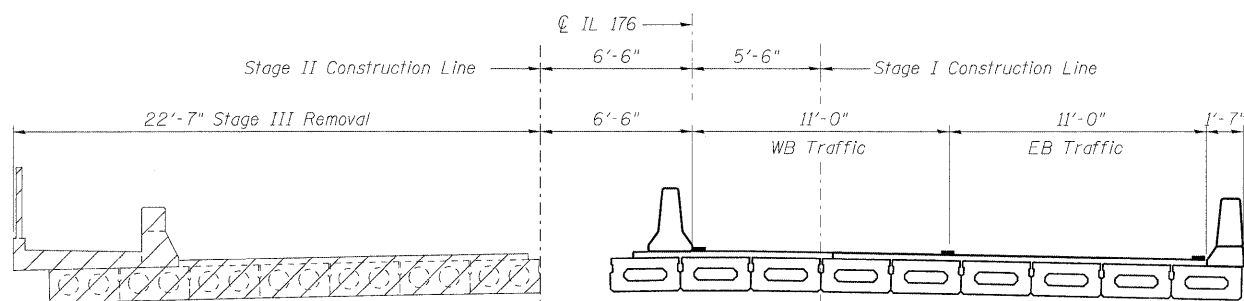
STAGE I CONSTRUCTION



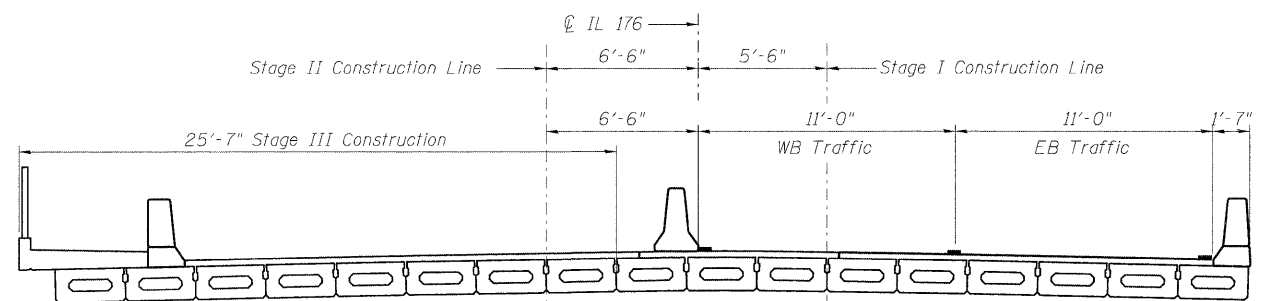
STAGE II REMOVAL



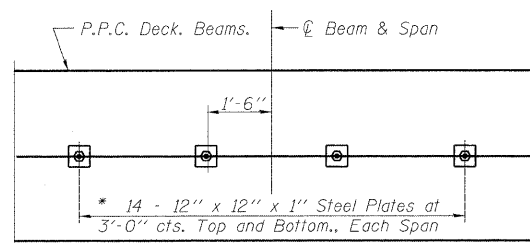
STAGE II CONSTRUCTION



STAGE III REMOVAL

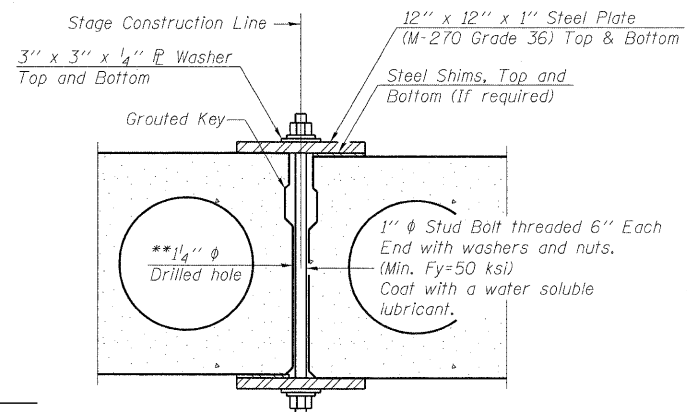


STAGE III CONSTRUCTION

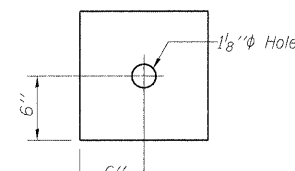


PLAN

*Space plates to miss Temporary Bridge Rail Posts.



SECTION



CLAMPING PLATE

SHEAR KEY CLAMPING DETAILS AT STAGE CONST. JT.

Cost included with Precast Prestressed Concrete Deck Beams.
See Stage Construction Details for traffic lanes.

** As an alternate to the drilled holes, the Contractor may request the Fabricator to cast 2" diameter semi-circular recesses in the sides of each beam adjacent to the stage construction line. These recesses should align to form a hole at the appropriate locations for the clamping device bolts. If the Contractor elects to use this alternate, the details shall be identified on the shop drawings.

NOTES

All Cross Sections looking East.
Hatched area indicates Removal of Existing Superstructures.
Cost of removing existing bituminous wearing surface, parapet, and railing are included with Removal of Existing Superstructures.
For quantity of Temporary Concrete Barrier see Roadway Plans.
For Temporary Concrete Barrier details see Sheet S4 of S18.
Shear Key Clamping bolts and plates shall be removed once all beams are in place, before placement of Waterproofing Membrane.
Fill all holes from shear key clamps with non-shrink grout.

DESIGNED	-	SLV
CHECKED	-	MJM
DRAWN	-	SLV
CHECKED	-	MJM

LONCO, INC.
CONSULTING ENGINEERS
1560 WALL ST, SUITE 222
NAPERVILLE, ILLINOIS 60563 PH: (630) 577-9100

**STAGE CONSTRUCTION DETAILS
STRUCTURE NO. 049-0131**

SHEET NO. S3 OF S18 SHEETS	F.A.U. RTE.	SECTION	COUNTY	TOTAL SHEETS	SHEET NO.
	1238	125SB-1-R	LAKE	38	16
D-91-045-08			CONTRACT NO. 60D57		
FED. ROAD DIST. NO. _		ILLINOIS	FED. AID PROJECT		