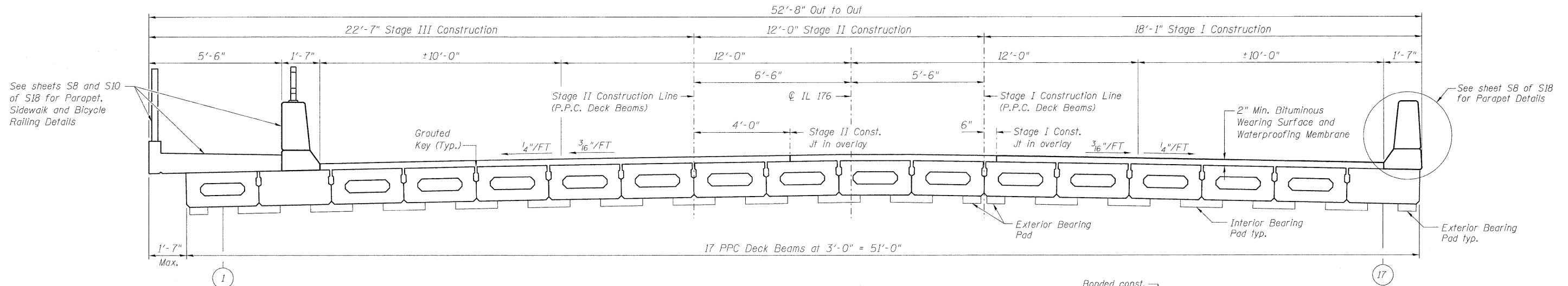
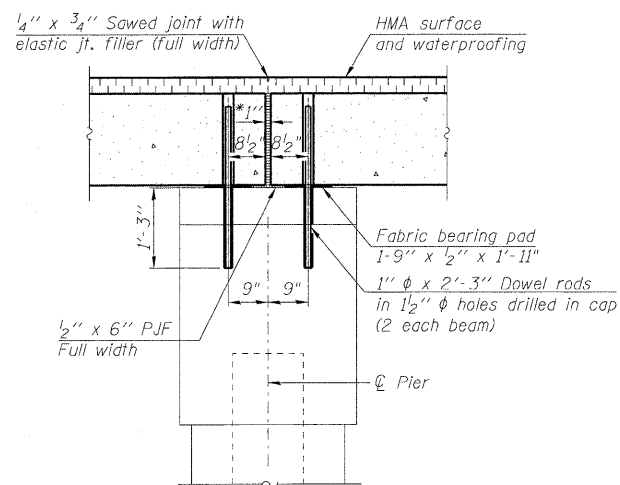


STATE OF ILLINOIS
DEPARTMENT OF TRANSPORTATION



CROSS SECTION



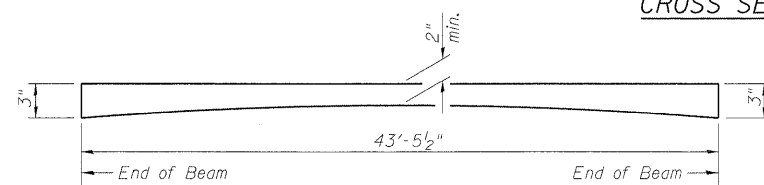
SECTION THRU FIXED PIER

*1" Jt. shall be filled with non-shrink grout. 1" dimension may vary to accommodate tolerance in beam lengths.

Notes:

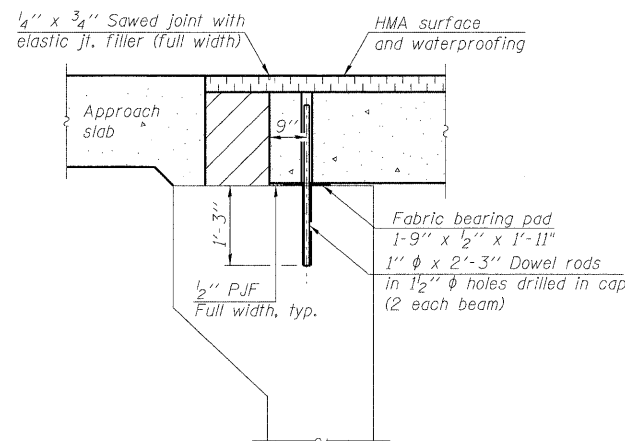
After beams have been erected, holes shall be drilled into substructure and anchor dowels placed. Dowel holes shall be filled with non-shrink grout to top of beam and allowed to cure min. 24 hrs. prior to grouting the shear keys.

All horizontal dimensions are at right angles to beam ends. Hatched area to be poured after beams are in place. See sheet S14 of S18 for bearing pad details.

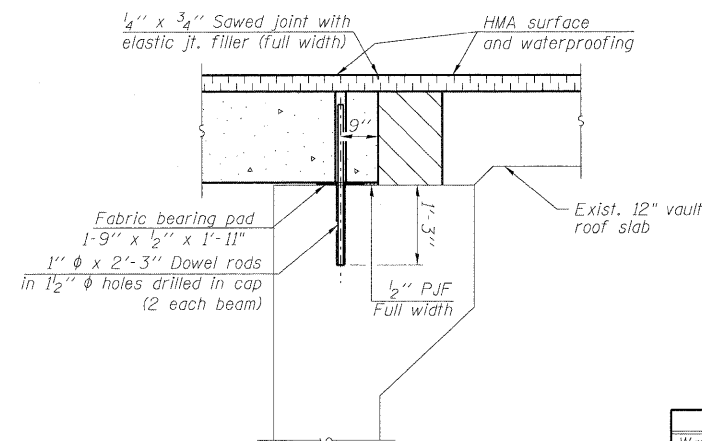


BITUMINOUS WEARING SURFACE PROFILE

Typical for each span.



W. ABUT.



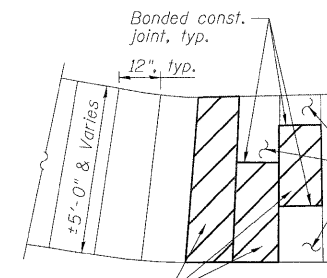
E. ABUT.

SECTION THRU FIXED ABUTMENT

Notes:

After beams have been erected, holes shall be drilled into substructure and anchor dowels placed. Dowel holes shall be filled with non-shrink grout to top of beam and allowed to cure min. 24 hrs. prior to grouting the shear keys.

All horizontal dimensions are at right angles to beam ends. Hatched area to be poured after beams are in place. See sheet S14 of S18 for bearing pad details.

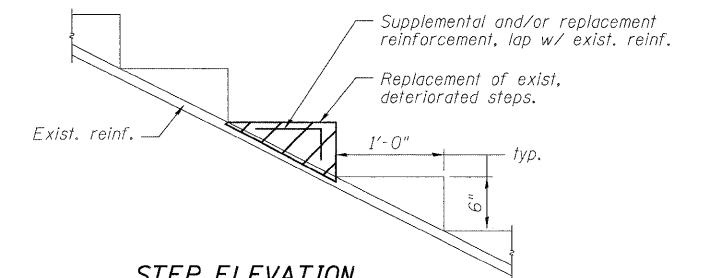


STEP PLAN

(Showing step repair)

Extent of repair to be determined by engineer in field, typ.

Sound exist. conc. to remain in place



STEP ELEVATION

Note:

East side stairs have steps made out of wood. The wood is to be removed and replaced with new concrete steps. Cost for repair to be included in Structural Repair of Concrete (Depth less than or equal to 5").

Required Supplemental reinforcement as determined by the Engineer, shall not be paid for separately. The cost shall be included in the cost of Structural Repair of Concrete.

BILL OF MATERIAL

Item	Unit	Quantity
Waterproofing Membrane System (Special)*	Sq. Yd.	545
Portland Cement Mortar Fairing Course	Foot	1391
Structural Repair of Concrete (Depth less than equal to 5")	Sq. Ft.	80

*Includes surface of deck beam superstructure and vault roof slab.

DESIGNED	SLV
CHECKED	MJM
DRAWN	SLV
CHECKED	MJM

LONGO, INC.
CONSULTING ENGINEERS
1560 WALL ST, SUITE 222
NAPERVILLE, ILLINOIS 60563 PH: (630) 577-9100

SUPERSTRUCTURE DETAILS
STRUCTURE NO. 049-0131

SHEET NO. S7 OF S18 SHEETS	F.A.U. RTE.	SECTION	COUNTY	TOTAL SHEETS	SHEET NO.
	1238	125SB-1-R	LAKE	38	20
D-91-045-08			CONTRACT NO. 60D57		
FED. ROAD DIST. NO. _		ILLINOIS	FED. AID PROJECT		