

STATE OF ILLINOIS  
DEPARTMENT OF TRANSPORTATION

TOTAL BILL OF MATERIAL

GENERAL NOTES

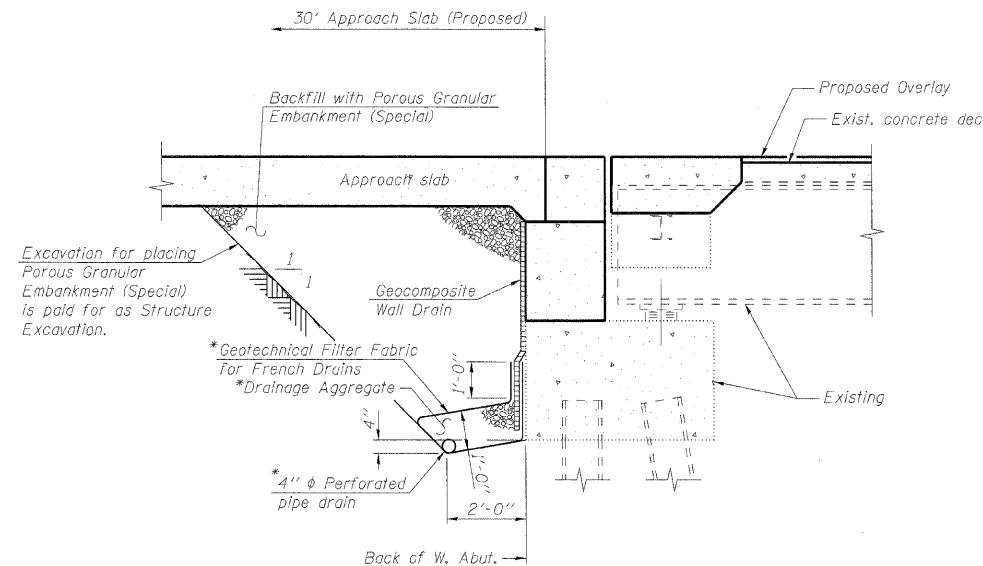
- Reinforcement bars shall conform to the requirements of ASTM A 706 Gr 60. See Special Provisions.
- Reinforcement bars designated (E) shall be epoxy coated.
- Prior to pouring the new concrete deck, all heavy or loose rust, loose mill scale, and other loose or potentially detrimental foreign material shall be removed from the surfaces in contact with concrete. Tightly adhered paint may remain unless otherwise noted. Removal shall be accomplished by methods that will not damage the steel and the cost will be included in the pay item covering removal of the existing concrete. As directed by the Engineer, existing construction accessories welded to the top flange of beams and girders shall be removed. The weld areas shall be ground flush and inspected for cracks using magnetic particle testing (MT) or dye penetrant testing (PT) by qualified personnel approved by the Engineer. Any cracks that cannot be removed by grinding 1/4 inch deep shall be identified and reported to the Bureau of Bridges and Structures for further disposition. The cost of removing welded accessories, grinding and inspecting weld areas and grinding cracks will be paid for according to Article 109.04 of the Standard Specifications.
- Plan dimensions and details relative to existing plans are subject to nominal construction variations. The Contractor shall field verify existing dimensions and details affecting new construction and make necessary approved adjustments prior to construction or ordering of materials. Such variations shall not be cause for additional compensation for a change in scope of the work, however, the Contractor will be paid for the quantity actually furnished at the unit price bid for the work.
- Concrete Sealer shall be applied to the parapets, east approach slab, abutment seats and abutment backwalls. All surfaces to be sealed shall be cleaned thoroughly prior to sealer application. Cost included with Concrete Sealer.
- The existing structural steel coating contains lead. The Contractor shall take appropriate precautions to deal with the presence of lead on this project.
- If the contractor chooses to alter the temporary cantilevered sheet piling design requirements shown on the plans, a design submittal including plan details and calculations will be required for review and acceptance by the Engineer.
- The Contractor shall connect the first sheet to the existing abutment wall to ensure stability of sheets driven to the top of the existing footing. This connection shall be reviewed and accepted by the Engineer and included in the cost of Temporary Sheet Piling.
- Stage construction shall be utilized to maintain traffic during construction.
- The Contractor shall exercise care during removal of existing joints to ensure that the slab, beams and diaphragms' integrity will not be detrimentally impacted. The Contractor shall repair any damage(s) to the slab, beams and diaphragms caused by his operation as directed by the Engineer at no additional cost to the Department.
- Protective coat shall be applied only to the new Bridge Deck Latex Concrete Overlay and west approach slab.
- Joint openings shall be adjusted according to Article 520.04 of the Std. Specs. when the deck is poured at an ambient temperature other than 50°F.

INDEX OF SHEETS

- General Plan and Elevation
- General Notes, Bill of Material and Index of Sheets
- Stage Construction Details
- Temporary Concrete Barrier for Stage Construction
- Bridge Deck and Approach Slab Repairs
- Bridge Approach Slab Details (1 of 2)
- Bridge Approach Slab Details (2 of 2)
- Expansion Joint Repairs
- Expansion Joint Details
- Preformed Joint Strip Seal
- West Abutment Backwall Repair
- Bar Splicer Assembly Details
- Existing Plan Information

\*\* All excavated materials shall be disposed of within IDOT right-of-way and within the project limits. See the General Notes sheet from the roadway plans for more information.

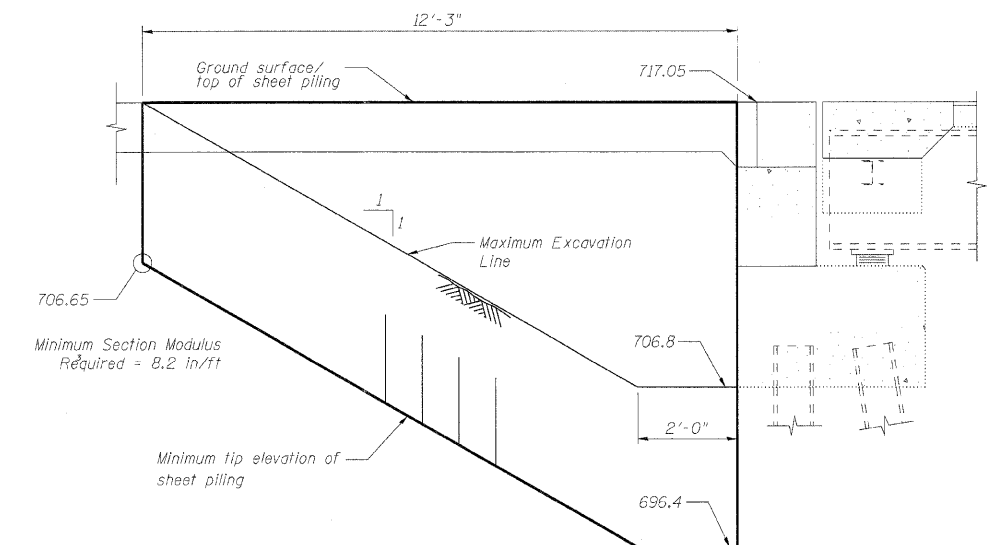
ITFM	UNIT	SUPER	SUB	TOTAL
Porous Granular Embankment, Special	Cu. Yd.		132	132
P.C. Concrete Bridge Approach Shoulder Pavement	Sq. Yd.	23		23
Approach Slab Removal	Sq. Yd.	194		194
Concrete Barrier Removal	Foot	17.5		17.5
Concrete Removal	Cu. Yd.	29.8	16.1	45.9
Protective Shield	Sq. Yd.	725		725
** Structure Excavation	Cu. Yd.		145	145
Concrete Structures	Cu. Yd.		16.1	16.1
Concrete Superstructure	Cu. Yd.	114.5		114.5
Bridge Deck Grooving	Sq. Yd.	1,444		1,444
Protective Coat	Sq. Yd.	1,507		1,507
Reinforcement Bars, Epoxy Coated	Pound	23,390	1,030	24,420
Bar Splicers	Each	94	68	162
Temporary Sheet Piling	Sq. Ft.		201	201
Preformed Joint Strip Seal	Foot	140.0		140.0
End Sections 12"	Each	1		1
Concrete Sealer	Sq. Ft.	2,769	1,115	3,884
Geocomposite Wall Drain	Sq. Yd.		70	70
Pipe Drains 12"	Foot	20		20
Pipe Underdrains for Structures 4"	Foot		73	73
Type D Inlet Box, Standard 609001	Each	1		1
Concrete Thrust Blocks	Each	1		1
Rem. & Reinst. of Exist. Steel Plate Beam Guard Rail, Attached to Structures	Foot	40		40
Bridge Deck Latex Concrete Overlay, 2 1/2"	Sq. Yd.	1,263		1,263
Structural Repair of Concrete (Depth Equal to or Less than 5 inches)	Sq. Ft.		12	12
Approach Slab Repair (Partial Depth)	Sq. Yd.	8.6		8.6
Bridge Deck Hydro-Scarification, 2 1/2"	Sq. Yd.	1,263		1,263
Deck Slab Repair (Full Depth, Type I)	Sq. Yd.	34.4		34.4
Deck Slab Repair (Full Depth, Type II)	Sq. Yd.	15.7		15.7
Cleaning and Painting Exposed Rebar (Special)	Sq. Ft.	15.3		15.3
Clean and Reseal Relief Joint	Foot	72.0		72.0



SECTION THRU PILE SUPPORTED  
STUB ABUTMENT  
(Horiz. dim. @ Rf. L's)

\*Included in the cost of Pipe Underdrains for Structures, 4".

All drainage system components shall extend parallel to the abutment back wall until they intersect the wingwalls or 2'-0" from the end of the wingwalls when the wings are parallel to the abutment. The pipe shall extend under the wingwall, if necessary, until intersecting the side slopes. The pipes shall drain into concrete headwalls. (See Article 601.05 of the Standard Specifications and Highway Standard 601101).



TEMPORARY SHEET PILING  
(Horiz. dim. @ Rf. L's)

GENERAL NOTES, BILL OF MATERIAL  
AND INDEX OF SHEETS  
STRUCTURE NO. 022-0099

DESIGNED	MFB
CHECKED	KWS
DRAWN	RMG
CHECKED	KWS

benesch

alfred benesch & company  
Engineers • Surveyors • Planners  
205 North Michigan Avenue, Suite 2400  
Chicago, Illinois 60601  
312-565-0450 Job No. 10050

SHEET NO. 2	F.A.I. RTE.	SECTION	COUNTY	TOTAL SHEETS	SHEET NO.
	290/355	22(1, 1-1, 2&3)RS-7	DUPAGE	546	264
18 SHEETS	CONTRACT NO. 60G51				
FED. ROAD DIST. NO.		ILLINOIS	FED. AID PROJECT		