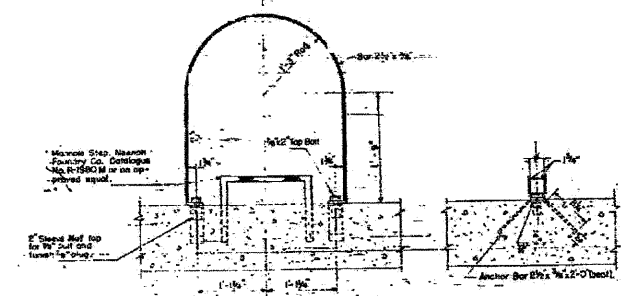
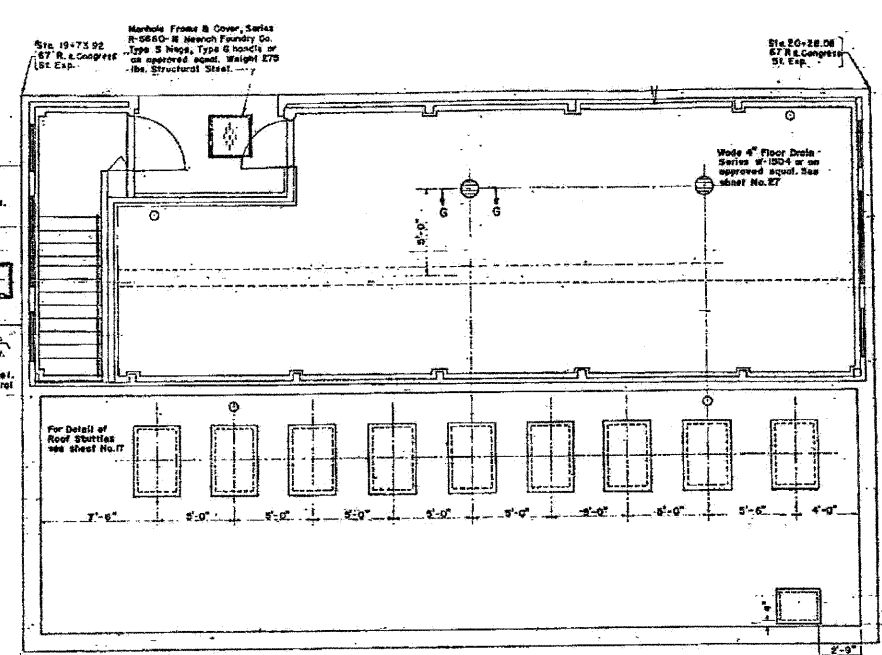
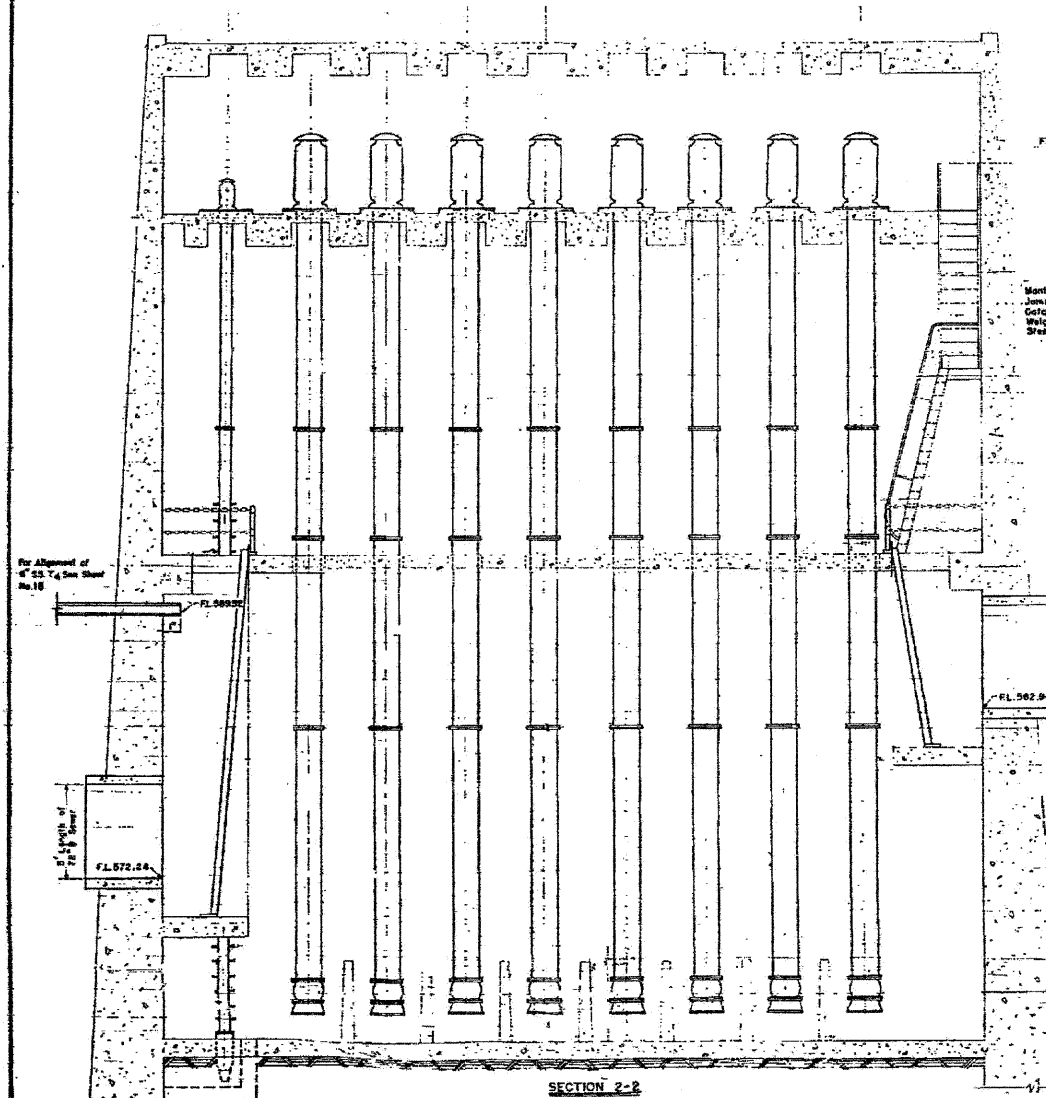


PS 4

FOR INFORMATION ONLY

SECTION 062-34232 MEY  
062-1950-26-53



NOTE: The 5' lengths of 7/8\" and 7/8\" Channel Steel shall be extra strength reinforced concrete column size, ASTM Designation C76, Table II. These beams will not be paid for separately but shall be included in the unit price bid per cubic yard of Class II Concrete. Total Weight of Structural Steel this sheet equals 2270 pounds.

LADDER-GUARD (5 Required) Weight 225 lbs. Street Steel  
MANHOLE STEPS (40 Required) Weight 800 lbs. Street Steel  
Scale 1/4\"=1'-0\"

Study by 'C' or as noted  
DEPARTMENT OF HIGHWAYS  
CONGRESS ST. EXPRESSWAY  
PUMPING STATION  
MECHANICAL DETAILS  
JES  
Date 12/21/09  
12/21/09

Added Sheet 12/21/2009, LIN

FILE NAME =	DESIGNED - SGL	REVISED 12/21/2009	<p>LIN ENGINEERING, LTD. Consulting Engineers Channahon, Illinois Westmont, Illinois</p>	<p>STATE OF ILLINOIS DEPARTMENT OF TRANSPORTATION</p>		<p>PUMP STATION NO. 4 RECORD DRAWINGS</p>		F.A.I. RTE.	SECTION	COUNTY	TOTAL SHEETS	SHEET NO.
#FILEL#	DRAWN - SGL	REVISED -						290	(3031.1, ETC., 3838)RS-5	COOK	298	251A
USER NAME = #USER#	CHECKED - FML	REVISED -						CONTRACT NO. 60652				
PLOT DATE = #DATE#	DATE - 12/2009	REVISED -						ILLINOIS FED. AID PROJECT				
			SCALE:		SHEET NO. 1 OF 2 SHEETS		STA. TO STA.					