

FOR INDEX OF SHEETS, SEE SHEET NO. 2.

TRAFFIC DATA

ADT = 187,000 VEHICLES
POSTED SPEED LIMIT = 55 MPH

PROJECT LOCATED IN THE
VILLAGE OF OAK PARK,
VILLAGE OF FOREST PARK,
VILLAGE OF MAYWOOD,
VILLAGE OF BROADVIEW,
VILLAGE OF WESTCHESTER,
VILLAGE OF BELLWOOD
AND VILLAGE OF HILLSIDE

STRUCTURE LOCATIONS

I-290 EB OVER I-88
SN 016-0085

I-290 C-D RAMP OVER HILLSIDE DR
SN 016-2759

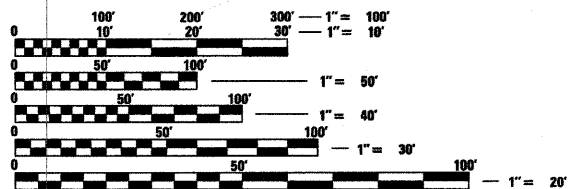
I-290 C-D RAMP OVER WOLF RD
SN 016-2758

I-290 OVER WOLF RD
SN 016-0086

I-290 OVER HILLSIDE DR
SN 016-0986

I-290 OVER ADDISON CREEK
SN 016-0088

I-290 OVER DES PLAINES RIVER
SN 016-0090



FULL SIZE PLANS HAVE BEEN PREPARED USING STANDARD ENGINEERING SCALES. REDUCED SIZED PLANS WILL NOT CONFORM TO STANDARD SCALES. IN MAKING MEASUREMENTS ON REDUCED PLANS, THE ABOVE SCALES MAY BE USED.

J.U.L.I.E.
JOINT UTILITY LOCATION INFORMATION FOR EXCAVATION
1-800-892-0123
OR 811

PROJECT ENGINEER: CRAIG BAUER (847) 705-4265
PROJECT MANAGER: LONG TRAN (847) 705-4232

CONTRACT NO. 60G52

STATE OF ILLINOIS
DEPARTMENT OF TRANSPORTATION
DIVISION OF HIGHWAYS

**PROPOSED
HIGHWAY PLANS**
FAI-290 (EISENHOWER EXPRESSWAY)
SECTION (3031.1, ETC., 3838)RS-5
PROJECT: ACIM-290-4(114)084
I-88 TO AUSTIN AVE.
RESURFACING AND ROADWAY AND STRUCTURE REPAIRS
COOK COUNTY
C-91-493-09

NOTE: WHEREVER IN THESE PLANS
REFERENCE IS MADE TO "TOTAL
SHEETS-298 IT SHALL MEAN 413

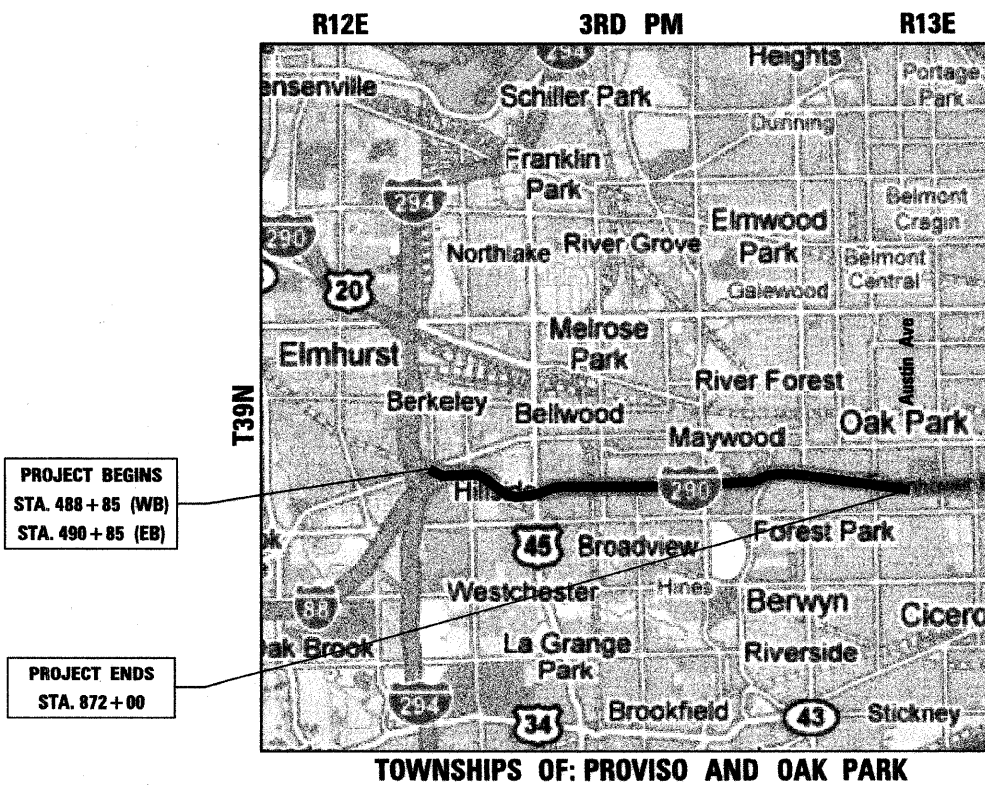
F.A.I. RTE.	SECTION	COUNTY	TOTAL SHEETS	SHEET NO.
290	(3031.1, ETC., 3838)RS-5	COOK	1	1
FED. ROAD DIST. NO.	ILLINOIS	CONTRACT NO. 60G52		

D-91-341-09

* 413 + 5 = 418
* + 6 = 424



LOCATION OF SECTION INDICATED THUS: —



INDEX OF SHEETS

SHEET NO.	DESCRIPTION
1	COVER SHEET
2	INDEX OF SHEETS, STANDARDS, GENERAL NOTES & HMA REQUIREMENTS
3-5	SUMMARY OF QUANTITIES
6-24	TYPICAL SECTIONS
* 25-27	SCHEDULES OF QUANTITIES
28-63	ALIGNMENTS
64-94	ROADWAY PLANS
95-190	MAINTENANCE OF TRAFFIC
191-221	PAVEMENT MARKING PLANS
222-250	STRUCTURAL PLANS
* 251	ROADWAY WEATHER INFORMATION SYSTEM SENSOR
252-267	TRAFFIC SURVEILLANCE LOOPS PLANS
268-283	TRAFFIC SYSTEM CENTER DETAILS
284-298	DISTRICT 1 DETAILS
299-302	SIGNING SCHEDULES OF QUANTITIES
303-328	SIGNING PLANS
329-405	SIGNING DETAILS
406-413	DISTRICT 1 SIGNING DETAILS

* ADDED 27A., 27B.
 * ADDED 251A. - 251D
 PUMP STATION DRAWINGS

GENERAL NOTES:

- BEFORE STARTING WORK THE CONTRACTOR SHALL CALL DIGGER AT (312) 774-7000 FOR WORK WITHIN THE CHICAGO CITY LIMITS OR JULIE AT 811 OR (800) 892-0123 FOR WORK OUTSIDE CHICAGO CITY LIMITS FOR FIELD LOCATIONS OF BURIED UTILITIES. 72 HOUR ADVANCE NOTIFICATION IS REQUIRED.
- THE CONTRACTOR SHALL COORDINATE CONSTRUCTION ACTIVITIES WITH UTILITY COMPANIES AS REQUIRED.
- THE CONTRACTOR SHALL COORDINATE WORK ACTIVITIES WITH ADJACENT IDOT CONTRACTS 60157 AND 60653, ILLINOIS STATE TOLL HIGHWAY AUTHORITY CONTRACT-I-294 FROM I-88 TO NORTH AVENUE, AND VALVE MAINTENANCE CONTRACT FOR BROADVIEW-WESTCHESTER JOINT WATER AGENCY (BWJWA) AT EB I-290, 100 FEET EAST OF DES PLAINES RIVER.
- THE CONTRACTOR WILL NOT BE ALLOWED TO SET UP A YARD OR FIELD OFFICE ON STATE PROPERTY WITHOUT WRITTEN PERMISSION FROM THE DEPARTMENT.
- VERTICAL CLEARANCES OF BRIDGES OVER I-290 SHALL BE MAINTAINED. HMA SURFACE REMOVAL AND PROPOSED HMA SURFACE THICKNESS WILL BE VARIED AS DIRECTED BY THE ENGINEER IF THE EXISTING BITUMINOUS DEPTH IS LESS THAN 2". THE CONTRACTOR SHALL VERIFY ALL BRIDGE CLEARANCES BEFORE AND AFTER CONSTRUCTION AND FURNISH RESULTS TO THE ENGINEER. THIS WORK SHALL BE INCLUDED IN THE LUMP SUM PRICE FOR CONSTRUCTION LAYOUT.
- WHERE ARTIFICIAL LIGHTING IS USED IN NIGHT OPERATIONS, THE CONTRACTOR SHALL EXERCISE THE UTMOST PRECAUTIONS IN PREVENTING ADVERSE VISIBILITY TO THE MOTORING PUBLIC AND ADJOINING RESIDENTIAL AREAS.
- PATCHING, CURB AND GUTTER REMOVAL AND REPLACEMENT, AND SHOULDER RECONSTRUCTION LIMITS ARE NOT SHOWN ON THE PLANS. LIMITS OF THIS WORK WILL BE DETERMINED BY THE ENGINEER.
- BUTT JOINTS WILL BE INSTALLED AT THE END OF ALL RESURFACING SECTIONS TO MATCH EXISTING PAVEMENT. SEE DISTRICT DETAIL BD400-05 - BUTT JOINT AND HMA TAPER DETAILS FOR ALL PCC AND HMA BUTT JOINTS.
- CONTACT EXPRESSWAY OPERATIONS AT (847) 705-4151 TWO WEEKS BEFORE INSTALLING FINAL PAVEMENT MARKINGS.
- THE CONTRACTOR SHALL SWEEP AND CLEAN THE PAVEMENT SURFACE, PER ARTICLE 107.15 OF THE STANDARD SPECIFICATIONS AND AS DIRECTED BY THE ENGINEER.
- TEMPORARY EDGE LINES SHOWN IN THE SUGGESTED MAINTENANCE OF TRAFFIC SHALL BE INSTALLED WITHIN 24 HOURS OF MILLING OR BINDER PLACEMENT.
- THE ALIGNMENTS AND SUPPORTING DATA SHOWN IN THE PLANS WAS DEVELOPED FROM PREVIOUS PLANIMETRICS AND AERIAL PHOTOGRAPHY FURNISHED BY THE DEPARTMENT AND IS NOT THE RESULT OF A GROUND SURVEY. THEREFORE, THE ALIGNMENTS AND SUPPORTING DATA SHOWN IN THE PLANS IS FOR REFERENCE PURPOSES ONLY. THE RELATIVE ACCURACY OF THE INFORMATION IS UNKNOWN AND CANNOT BE GUARANTEED. THE CONTRACTOR MAY BE REQUIRED TO ADJUST LAYOUT TO MATCH ACTUAL FIELD CONDITIONS AND THE INTENT OF THE PLANS. ALL ALIGNMENTS ARE BASELINES.
- BEFORE BEGINNING ANY WORK, THE CONTRACTOR SHALL RETAIN AND RECORD (FOR FUTURE REFERENCES), ALL EXISTING PAVEMENT MARKING LINES IN ORDER THAT THESE LOCATIONS CAN BE RE-ESTABLISHED FOR STRIPING. EXACT LOCATIONS OF ALL STRIPING SHALL BE AS DIRECTED BY THE ENGINEER.
- DRAINAGE ADJUSTMENT, CLEANING OR RECONSTRUCTION LOCATIONS WILL BE DETERMINED IN THE FIELD BY THE ENGINEER.
- EXISTING BROKEN FRAMES AND LIDS SHALL BE REMOVED AND DISPOSED OF BY THE CONTRACTOR AND SHALL BE REPLACED AS DIRECTED BY THE ENGINEER. REPLACEMENT FRAMES AND LIDS WILL BE PAID FOR IN ACCORDANCE WITH ARTICLE 109.04 OF THE STANDARD SPECIFICATIONS UNLESS A SEPARATE PAY ITEM HAS BEEN PROVIDED.
- VERTICAL BARRICADES WILL REMAIN IN PLACE ALONG THE EDGES OF PAVEMENT AS SHOWN IN THE SUGGESTED MAINTENANCE OF TRAFFIC PLANS UNTIL THE SURFACE COURSE AND PROPOSED PAVEMENT MARKING EDGE LINES HAVE BEEN COMPLETED.
- DISPOSAL OF THE SHOULDER CUTTING AND CLEAN SWEEPING OF THE SHOULDERS SHALL BE COMPLETED PRIOR TO THE OPENING OF THE SHOULDERS AND TRAFFIC. DISPOSAL AND SWEEPING SHALL BE INCLUDED IN THE COST OF "SHOULDER RUMBLE STRIPS".
- EXISTING PAVEMENT MARKINGS THAT CONFLICT WITH REVISED TRAFFIC PATTERNS SHALL BE REMOVED AS DIRECTED BY THE ENGINEER. THIS WORK WILL BE PAID FOR AT THE CONTRACT UNIT PRICE PER SQUARE FOOT FOR PAVEMENT MARKING REMOVAL.

IDOT STANDARDS

STANDARD NO.	DESCRIPTION
000001-05	STANDARD SYMBOLS, ABBREVIATIONS AND PATTERNS
420001-07	PAVEMENT JOINTS
442001-04	CLASS A PATCHES
442201-03	CLASS C AND D PATCHES
515001-03	NAME PLATE FOR BRIDGES
635006-03	REFLECTOR AND TERMINAL MARKER PLACEMENT
635011-02	REFLECTOR MARKER AND MOUNTING DETAILS
642001-01	SHOULDER RUMBLE STRIPS
701101-02	OFF-ROAD OPERATIONS, MULTILANE, 4.5m (15') TO 600mm (24") FROM PAVEMENT EDGE
701106-02	OFF-ROAD OPERATIONS, MULTILANE, MORE THAN 15' (4.5m) AWAY
701400-04	APPROACH TO LANE CLOSURE, FREEWAY/EXPRESSWAY
701401-05	LANE CLOSURE, FREEWAY/EXPRESSWAY
701406-05	LANE CLOSURE, FREEWAY/EXPRESSWAY, DAY OPERATIONS ONLY
701411-06	LANE CLOSURE, MULTILANE, AT ENTRANCE OR EXIT RAMP, FOR SPEEDS ≥ 45 MPH
701421-02	LANE CLOSURE, MULTILANE, DAY OPERATIONS ONLY, FOR SPEEDS ≥ 45 MPH TO 55 MPH
701422-02	LANE CLOSURE, MULTILANE, FOR SPEEDS ≥ 45 MPH TO 55 MPH
701426-03	LANE CLOSURE, MULTILANE, INTERMITTENT OR MOVING OPERATIONS, FOR SPEEDS ≥ 45 MPH
701446-01	TWO LANE CLOSURE FREEWAY/EXPRESSWAY
701901-01	TRAFFIC CONTROL DEVICES
704001-06	TEMPORARY CONCRETE BARRIER
720001-01	SIGN PANEL MOUNTING DETAILS
720006-02	SIGN PANEL ERECTION DETAILS
720011-01	METAL POSTS FOR SIGNS, MARKERS, & DELINEATORS
720021-02	SIGN PANEL EXTRUDED ALUMINUM TYPE
780001-02	TYPICAL PAVEMENT MARKINGS
781001-03	TYPICAL APPLICATIONS RAISED REFLECTIVE PAVEMENT MARKERS

DISTRICT 1 DETAILS

DETAIL	DESCRIPTION
BD600-03 (BD-8)	DETAILS FOR FRAMES AND LIDS ADJUSTMENT WITH MILLING
BD400-04 (BD-22)	PAVEMENT PATCHING FOR HMA SURFACED PAVEMENT
BD400-05 (BD-32)	BUTT JOINT AND HMA TAPER DETAILS
BD400-06 (BD-33)	HMA TAPER AT EDGE OF P.C.C. PAVEMENT
BE-600	ELECTRIC CONNECTION TO SIGN STRUCTURE SPAN TYPE
BE-601	ELECTRIC CONNECTION TO SIGN STRUCTURE CANTILEVER TYPE
BM-21	REMOVE AND REERECT STEEL PLATE BEAM GUARDRAIL
TC-8	FREEWAY ENTRANCE AND EXIT RAMP CLOSURE DETAILS
TC-9	TRAFFIC CONTROL DETAILS FOR FREEWAY SINGLE & MULTI-LANE WEAVE
TC-12	MULTI-LANE FREEWAY PAVEMENT MARKING DETAILS
TC-17	TRAFFIC CONTROL DETAILS FOR FREEWAY SHOULDER CLOSURES
TC-18	PARTIAL RAMP CLOSURES
TC-25	SIGNING FOR FLAGGING OPERATIONS AT WORK ZONE OPENINGS
TC-27	TRAFFIC CONTROL DETAILS FOR FREEWAY CENTER LANE CLOSURE SHOULDER LANE
	MILE POST MARKERS-GORE SIGNS-MAJOR GUIDE SIGN LAYOUT-ARROWS

HOT-MIX ASPHALT REQUIREMENTS

MIXTURE TYPE	THICKNESS	VOIDS
MAINLINE RESURFACING		
POLYMERIZED HOT-MIX ASPHALT SURFACE COURSE, STONE MATRIX ASPHALT, N80	2"	3.5% @ 80 Gyr
POLYMERIZED HOT-MIX ASPHALT BINDER COURSE, STONE MATRIX ASPHALT, N80	2"	3.5% @ 80 Gyr
MAINLINE INSIDE SHOULDERS < 8'		
POLYMERIZED HOT-MIX ASPHALT SURFACE COURSE, STONE MATRIX ASPHALT, N80	2"	3.5% @ 80 Gyr
POLYMERIZED HOT-MIX ASPHALT BINDER COURSE, STONE MATRIX ASPHALT, N80	2"	3.5% @ 80 Gyr
MAINLINE OUTSIDE SHOULDERS AND INSIDE SHOULDERS > 8'		
HOT-MIX ASPHALT SURFACE COURSE, MIX "D", N70	1-1/2"	4% @ 70 Gyr
HOT-MIX ASPHALT BINDER COURSE, IL-19.0 N70	2-1/4"	4% @ 70 Gyr
RAMPS AND SHOULDER RESURFACING		
HOT-MIX ASPHALT SURFACE COURSE, MIX "D", N70	1 1/2"	4% @ 70 Gyr
HOT-MIX ASPHALT BINDER COURSE, IL-19.0 N70	2-1/4"	4% @ 70 Gyr
IL RTE 38 (ROOSEVELT ROAD) RAMPS		
POLYMERIZED HOT-MIX ASPHALT SURFACE COURSE, MIX "F", N90	1-3/4"	4% @ 90 Gyr
POLYMERIZED HOT-MIX ASPHALT BINDER COURSE, IL-19.0, N90	2-1/4"	4% @ 90 Gyr
PATCHING		
CLASS D PATCHES OF TYPE AND THICKNESS SPECIFIED (HMA BINDER IL-25mm)	10"	4% @ 105 Gyr
HOT-MIX ASPHALT REPLACEMENT OVER PATCHES (HMA BINDER IL-25mm)	3 1/4" OR 4"	4% @ 105 Gyr
SHOULDER RECONSTRUCTION		
HOT-MIX ASPHALT SHOULDER, 10" (HMA BINDER IL-19mm)	10"	4% @ 70 Gyr
HOT-MIX ASPHALT SURFACE COURSE, MIX "D", N70	1-1/2"	4% @ 70 Gyr
HOT-MIX ASPHALT BINDER COURSE, IL-19.0, N70	2-1/4"	4% @ 70 Gyr
STABILIZED SUBBASE HOT-MIX ASPHALT, 4"	4"	2% @ 30 Gyr

UNIT WEIGHT USED TO CALCULATE ALL HOT-MIX ASPHALT SMA SURFACE COURSE IS 135 LBS/SQ YD/IN.
 UNITS WEIGHT USED TO CALCULATE ALL OTHER HOT-MIX ASPHALT MIXTURES IS 112 LBS/SQ YD/IN.

THE "AC TYPE" FOR POLYMERIZED HMA MIXES SHALL BE "SBS/SBR PG 70-22" AND FOR NON-POLYMERIZED HMA THE "AC TYPE" SHALL BE "PG 64-22" UNLESS MODIFIED BY DISTRICT ONE SPECIAL PROVISIONS.
 FOR " PERCENT OF RAP" SEE DISTRICT ONE SPECIAL PROVISIONS.

Rev. 1-4-10

SPECIALTY ITEM	CODE NUMBER	ITEM	UNIT	TOTAL QUANTITY	ROADWAY	SURVEILLANCE	BRIDGE SN 016-0088	BRIDGE SN 016-0090	BRIDGE SN 016-0088 SN 016-2758	BRIDGE SN 016-0085 SN 016-0986 SN 016-2759
					90% FED 10% STATE	90% FED 10% STATE	90% FED 10% STATE	90% FED 10% STATE	90% FED 10% STATE	90% FED 10% STATE
					CONSTRUCTION TYPE CODE					
					000-2A	Y032-1F	X020-2A	X071-2A	X231-2A	X271-2A
	28000510	INLET FILTERS	EACH	738	738					
**	20100110	TREE REMOVAL (0 TO 15 UNITS DIAMETER)	UNIT	1530	1530					
	40600200	BITUMINOUS MATERIALS (PRIME COAT)	TON	470	470					
	40600300	AGGREGATE (PRIME COAT)	TON	2,352	2,352					
	40600400	MIXTURE FOR CRACKS, JOINTS, AND FLANGEWAYS	TON	882	882					
**	20100210	TREE REMOVAL (OVER 15 UNITS DIAMETER)	UNIT	96	96					
	40600895	CONSTRUCTING TEST STRIP	EACH	2	2					
**	2010300	TREE PRUNING (1 TO 10 INCH DIAMETER)	EACH	18	18					
	40600982	HOT-MIX ASPHALT SURFACE REMOVAL - BUTT JOINT	SQ YD	5,000	5,000					
**	2010350	TREE PRUNING (OVER 10 INCH DIAMETER)	EACH	23	23					
	40601005	HOT-MIX ASPHALT REPLACEMENT OVER PATCHES	TON	6,291	6,291					
△	40603085	STABILIZED SUBBASE HOT-MIX ASPHALT 4"	SQ YD	1,000	1,000					
	40603085	HOT-MIX ASPHALT BINDER COURSE, IL-19.0, N70	TON	18,212	18,212					
△	40603240	PAYE SHOULDER REMOVAL	SQ YD	1,000	1,000					
	40603240	POLYMERIZED HOT-MIX ASPHALT BINDER COURSE, IL-19.0, N90	TON	1,721	1,721					
**	40600100	BITUMINOUS MATERIALS (PRIME COAT)	GALLON	560	560					
	40603340	HOT-MIX ASPHALT SURFACE COURSE, MIX "D", N70	TON	12,135	12,135					
△	44004260	PAVED SHOULDER REMOVAL (SPECIAL)	SQ YD	1,000	1,000					
	40603595	POLYMERIZED HOT-MIX ASPHALT SURFACE COURSE, MIX "F", N90	TON	1,338	1,338					
	42001300	PROTECTIVE COAT	SQ YD	600	600					
	44000162	HOT-MIX ASPHALT SURFACE REMOVAL, 3 1/4"	SQ YD	33,011	33,011					
△	40800052	INCIDENTAL HOT-MIX ASPHALT SURFACING (SPECIAL)	TON	224	224					
	44000164	HOT-MIX ASPHALT SURFACE REMOVAL, 3 3/4"	SQ YD	182,332	182,332					
	44000185	HOT-MIX ASPHALT SURFACE REMOVAL, 4"	SQ YD	372,681	372,681					
	44000500	COMBINATION CURB AND GUTTER REMOVAL	FOOT	2,812	2,812					
	44001700	COMBINATION CONCRETE CURB AND GUTTER REMOVAL AND REPLACEMENT	FOOT	100	100					
	44002213	HOT-MIX ASPHALT REMOVAL OVER PATCHES, 3 1/4"	SQ YD	1,320	1,320					
	44002216	HOT-MIX ASPHALT REMOVAL OVER PATCHES, 4"	SQ YD	27,014	27,014					
	44200549	CLASS A PATCHES, TYPE I, 10 INCH	SQ YD	300	300					
	44201761	CLASS D PATCHES, TYPE I, 10 INCH	SQ YD	167	167					
	44200553	CLASS A PATCHES, TYPE II, 10 INCH	SQ YD	300	300					
	44201785	CLASS D PATCHES, TYPE II, 10 INCH	SQ YD	8,850	8,850					
	44201789	CLASS D PATCHES, TYPE III, 10 INCH	SQ YD	3,205	3,205					
	44201771	CLASS D PATCHES, TYPE IV, 10 INCH	SQ YD	13,490	13,490					
	44213000	PATCHING REINFORCEMENT	SQ YD	600	600					
	44300000	STRIP REFLECTIVE CRACK CONTROL TREATMENT SYSTEM A	FOOT	302,893	302,893					
	44213200	SAW CUTS	FOOT	294	294					
	48200007	HOT-MIX ASPHALT SHOULDERS, 10"	SQ YD	19,432	19,432					
	50102400	CONCRETE REMOVAL	CU YD	46.7						46.7
	50157300	PROTECTIVE SHIELD	SQ YD	342				127		215
	50300255	CONCRETE SUPERSTRUCTURE	CU YD	46.7						46.7
	50800205	REINFORCEMENT BARS, EPOXY COATED	POUND	6,180						6,180
	50800515	BAR SPlicERS	EACH	38						38
	52000110	PREFORMED JOINT STRIP SEAL	FOOT	328.0						328.0
△	55039700	STORM SEWERS TO BE CLEANED	FOOT	2,136	2,136					
	58700300	CONCRETE SEALER	SQ FT	130,648			18,601	29,427	39,898	42,722
	60300205	FRAMES AND GRATES TO BE ADJUSTED (SPECIAL)	EACH	441	441					
	60300310	FRAMES AND LIDS TO BE ADJUSTED (SPECIAL)	EACH	441	441					
	60605000	COMBINATION CONCRETE CURB AND GUTTER, TYPE B-8.24	FOOT	2,812	2,812					
	64200105	SHOULDER RUMBLE STRIP	FOOT	120,577	120,577					
	67100100	MOBILIZATION	L SUM	1	1					
	70106800	CHANGEABLE MESSAGE SIGN	CAL MO	40	40					

△ - Non-participating

** FOR LOCATIONS AND EXTENT OF WORK NOT SHOWN IN THE PLANS, THE CONTRACTOR SHALL COORDINATE WITH THE ENGINEER AND CONTACT RICK WANNER, ROADSIDE DEVELOPMENT ARCHITECT, IDOT ROADSIDE DEVELOPMENT UNIT AT (BUT) 705-4172 AT LEAST 72 HOURS PRIOR TO STARTING WORK.

Rev. 1-4-10

FILE NAME =	DESIGNED - AJP	REVISED -	benesch	STATE OF ILLINOIS DEPARTMENT OF TRANSPORTATION	SUMMARY OF QUANTITIES				F.A.I. RTE.	SECTION	COUNTY	TOTAL SHEETS	SHEET NO.
...prpIn.ABC.C2.sqa.01.dgn	DRAWN - TMB	REVISED -			290	(3031.1, ETC., 3838)RS-5	COOK	298	3				
USER NAME = tblank	CHECKED - JMM	REVISED -			CONTRACT NO. 60G52								
PLST DATE = 10/16/2009	DATE - 10/16/09	REVISED -			SCALE: N.T.S.	SHEET NO. 1 OF 3 SHEETS	STA. TO STA.	FED. ROAD DIST. NO.	ILLINOIS FED. AID PROJECT				

SPECIALTY ITEM	CODE NUMBER	ITEM	UNIT	TOTAL QUANTITY	ROADWAY	SURVEILLANCE	BRIDGE SN 016-0088	BRIDGE SN 016-0090	BRIDGE SN 016-0086 SN 016-2758	BRIDGE SN 016-0085 SN 016-0986 SN 016-2759	TRAFFIC SIGNS 90% FED. 10% STATE
					90% FED 10% STATE	90% FED 10% STATE	90% FED 10% STATE	90% FED 10% STATE	90% FED 10% STATE	90% FED 10% STATE	
					CONSTRUCTION TYPE CODE						
					1000-2A	Y032-1F	X020-2A	X071-2A	X231-2A	X271-2A	Y002-1C
	70300210	TEMPORARY PAVEMENT MARKING - LETTERS AND SYMBOLS	SQ FT	109	109						
*	72000105	SIGN PANEL - TYPE 1 (SPECIAL)	SQ FT	228							228
	70300220	TEMPORARY PAVEMENT MARKING - LINE 4"	FOOT	89,798	89,798						
*	72000205	SIGN PANEL - TYPE 2 (SPECIAL)	SQ FT	1,578							1,578
	70300230	TEMPORARY PAVEMENT MARKING - LINE 5"	FOOT	32,486	32,486						
*	72000305	SIGN PANEL - TYPE 3 (SPECIAL)	SQ FT	12,166							12,166
	70300340	TEMPORARY PAVEMENT MARKING - LINE 6"	FOOT	38,204	38,204						
*	72400100	REMOVE SIGN PANEL ASSEMBLY - TYPE A	EACH	15							15
	70300250	TEMPORARY PAVEMENT MARKING - LINE 8"	FOOT	27,461	27,461						
*	72800100	TELESCOPING STEEL SIGN SUPPORT	FOOT	558							558
	70300260	TEMPORARY PAVEMENT MARKING - LINE 12"	FOOT	4,366	4,366						
*	73000105	WOOD SIGN SUPPORT, SPECIAL	FOOT	1,098							1,098
	70301000	WORK ZONE PAVEMENT MARKING REMOVAL	SQ FT	49,243	49,243						
*	84200600	REMOVAL OF LIGHTING UNIT, NO SALVAGE	EACH	65							65
	70400100	TEMPORARY CONCRETE BARRIER	FOOT	24,190	24,190						
*	X0326838	REMOVE SIGN PANEL - TYPE 1 (SPECIAL)	SQ FT	142							142
	70400200	RELOCATE TEMPORARY CONCRETE BARRIER	FOOT	17,626	17,626						
*	X0326839	REMOVE SIGN PANEL - TYPE 2 (SPECIAL)	SQ FT	796							796
	78000100	THERMOPLASTIC PAVEMENT MARKING - LETTERS AND SYMBOLS	SQ FT	617	617						
*	X0326840	REMOVE SIGN PANEL - TYPE 3 (SPECIAL)	SQ FT	11,099							11,099
	78000200	THERMOPLASTIC PAVEMENT MARKING - LINE 4"	FOOT	166,850	166,850						
*	X0326841	REMOVE SIGN PANEL ASSEMBLY - TYPE B (SPECIAL)	EACH	55							55
	78000400	THERMOPLASTIC PAVEMENT MARKING - LINE 6"	FOOT	937	937						
*	X0326842	MILE POST MARKER ASSEMBLY (SPECIAL)	EACH	28							28
	78000500	THERMOPLASTIC PAVEMENT MARKING - LINE 8"	FOOT	47,190	47,190						
*	78000600	THERMOPLASTIC PAVEMENT MARKING - LINE 12"	FOOT	15,231	15,231						
*	78000650	THERMOPLASTIC PAVEMENT MARKING - LINE 24"	FOOT	123	123						
*	78004210	PREFORMED PLASTIC PAVEMENT MARKING, TYPE B - INLAID - LINE 4"	FOOT	2,048	2,048						
*	78004220	PREFORMED PLASTIC PAVEMENT MARKING, TYPE B - INLAID - LINE 5"	FOOT	39,841	39,841						
*	78005100	EPOXY PAVEMENT MARKING - LETTERS AND SYMBOLS	SQ FT	1,000	1,000						
	78100100	RAISED REFLECTIVE PAVEMENT MARKER	EACH	4,278	4,278						
*	78005110	EPOXY PAVEMENT MARKING - LINE 4"	FOOT	446,804	446,804						
	78100105	RAISED REFLECTIVE PAVEMENT MARKER (BRIDGE)	EACH	80	80						
*	78005120	EPOXY PAVEMENT MARKING - LINE 5"	FOOT	119,608	119,608						
	78008210	POLYUREA PAVEMENT MARKING TYPE I - LINE 4"	FOOT	17,617	17,617						
*	78005140	EPOXY PAVEMENT MARKING - LINE 8"	FOOT	41,679	41,679						
	78008220	POLYUREA PAVEMENT MARKING TYPE I - LINE 5"	FOOT	3,281	3,281						
*	78008240	POLYUREA PAVEMENT MARKING TYPE I - LINE 8"	FOOT	84	84						
	78008250	POLYUREA PAVEMENT MARKING TYPE I - LINE 12"	FOOT	1,226	1,226						
*	78200450	MONODIRECTIONAL GUARDRAIL REFLECTORS	EACH	300	300						
	78200480	MONODIRECTIONAL PRISMATIC BARRIER REFLECTOR	EACH	1,524	1,524						
*	78200530	BARRIER WALL MARKERS, TYPE G	EACH	1,935	1,935						
	78300100	PAVEMENT MARKING REMOVAL	SQ FT	30,301	30,301						
	78300200	RAISED REFLECTIVE PAVEMENT MARKER REMOVAL	EACH	4,278	4,278						
*	81900200	TRENCH AND BACKFILL FOR ELECTRICAL WORK	FOOT	100		100					
*	85000200	MAINTENANCE OF EXISTING TRAFFIC SIGNAL INSTALLATION	EACH	1	1						
*	88600100	DETECTOR LOOP, TYPE I	FOOT	170	170						
	X0326844	ROADSIDE DETECTOR	EACH	24		24					
	X0301424	SILICONE JOINT SEALER	FOOT	886.5			228.0	199.5	237.0	222.0	
	X0326845	SERVICE PROVIDER	CAL MO	12		12					
	X0322256	TEMPORARY INFORMATION SIGNING	SQ FT	2,081	2,081						
	X0326846	ATMS INTERFACE	L SUM	1		1					
	X0322729	MATERIAL TRANSFER DEVICE	TON	105,640	105,640						
	X0326847	TEMPORARY DETECTION SYSTEM MONTHLY MAINTENANCE	CAL MO	12		12					
	X0324685	TEST STRIP (STONE MATRIX ASPHALT)	EACH	2	2						
	X0326848	TEMPORARY DETECTION SYSTEM REMOVE AND SALVAGE	L SUM	1		1					
	X0325201	SHOULDER RUMBLE STRIP REMOVAL	SQ YD	362	362						
	X0325303	STRUCTURAL REPAIR OF CONCRETE (DEPTH GREATER THAN 5 INCHES)	SQ FT	258	210		32		10		
	X0325305	STRUCTURAL REPAIR OF CONCRETE (DEPTH EQUAL TO OR LESS THAN 5 INCHES)	SQ FT	80	80					50	
	X0325702	NIGHTTIME WORK ZONE LIGHTING	L SUM	1	1						

* Specialty Items

FILE NAME =	DESIGNED - AJP	REVISED -
...prp\in_abc_c2_sq_82.dgn	DRAWN - TMB	REVISED -
USER NAME = tblank	CHECKED - JMM	REVISED -
PLOT DATE = 10/16/2009	DATE - 10/16/09	REVISED -

benesch

**STATE OF ILLINOIS
DEPARTMENT OF TRANSPORTATION**

SUMMARY OF QUANTITIES

SCALE: N.T.S. SHEET NO. 2 - OF 3 SHEETS STA. TO STA.

F.A.I. RTE.	SECTION	COUNTY	TOTAL SHEETS	SHEET NO.
290	(3031, ETC., 3838)RS-5	COOK	298	4
CONTRACT NO. 60G52			Rev.	
FED. ROAD DIST. NO. ILLINOIS FED. AID PROJECT				

Rev. 1-4-10

SPECIALTY ITEM	CODE NUMBER	ITEM	UNIT	TOTAL QUANTITY	ROADWAY	SURVEILLANCE	BRIDGE SN 016-0088	BRIDGE SN 016-0090	BRIDGE SN 016-0086 SN 016-2758	BRIDGE SN 016-0085 SN 016-0986 SN 016-2759
					90% FED 10% STATE	90% FED 10% STATE	90% FED 10% STATE	90% FED 10% STATE	90% FED 10% STATE	90% FED 10% STATE
					CONSTRUCTION TYPE CODE					
					1000-2A	Y032-1F	X020-2A	X071-2A	X231-2A	X271-2A
	X0325739	HOT-MIX ASPHALT SHOULDER REMOVAL AND REPLACEMENT (SPECIAL)	SQ YD	25,740	25,740					
	X0325754	REPLACEMENT OF SENSORS FOR ROADWAY WEATHER INFORMATION SYSTEM	L SUM	1		1				
	X0325775	WET REFLECTIVE TEMPORARY TAPE, TYPE III, 4 INCH	FOOT	176,098	176,098					
	X0325840	WET REFLECTIVE TEMPORARY TAPE, TYPE III, 12 INCH	FOOT	6,841	6,841					
	X0325876	WET REFLECTIVE TEMPORARY TAPE TYPE III, 8 INCH TYPE III	FOOT	51,323	51,323					
	X0325842	WET REFLECTIVE TEMPORARY TAPE, LETTERS AND SYMBOLS	SQ FT	109	109					
	X0326107	WET REFLECTIVE TEMPORARY TAPE, TYPE III, 5 INCH	FOOT	44,592	44,592					
	X4066580	POLYMERIZED HOT-MIX ASPHALT SURFACE COURSE, STONE MATRIX ASPHALT, N80	TON	57,738	57,738					
	X0326849	CLEANING OF WET PIT	TON	2,070	2,070					
	X4066685	POLYMERIZED HOT-MIX ASPHALT BINDER COURSE, STONE MATRIX ASPHALT, N80	TON	47,902	47,902					
	X0326850	MAIN DRAIN JOINT REPAIR	FOOT	357	357					
	X6700410	ENGINEER'S FIELD OFFICE, TYPE A (SPECIAL)	CAL MO	10	10					
	X0325095	MAIN DRAIN CLEANING	FOOT	18,005	18,005					
	X011015	TRAFFIC CONTROL AND PROTECTION (EXPRESSWAYS)	L SUM	1						
**	X0322059	WEED CONTROL, PRE-EMERGENT GRANULAR HERBICIDE	POUND	200	200					
	X013820	TRAFFIC CONTROL SURVEILLANCE, EXPRESSWAYS	CAL DA	65	65					
**	X2010300	TREE REMOVAL (UNDER 6 UNITS DIAMETER)	UNIT	248	248					
	X8730312	ELECTRIC CABLE IN CONDUIT, LEAD-IN, NO. 18 4/C, TWISTED, SHIELDED	FOOT	14,932		14,932				
**	Z0064800	SELECTIVE CLEARING	UNIT	305	305					
	X8850102	INDUCTION LOOP	FOOT	4,086		4,086				
**	X0325222	WEED CONTROL, BASAL TREATMENT	GALLON	15	15					
	Z001800	APPROACH SLAB REPAIR (PARTIAL DEPTH)	SQ YD	124.0			24.4	49.0	20.6	30.0
**	X0325921	PLANT CARE	SQ YD	6,790	6,790					
	Z0013798	CONSTRUCTION LAYOUT	L SUM	1	1					
**	X0322856	WEED CONTROL, NON-SELECTIVE AND NON-RESIDUAL	GALLON	2	2					
	Z0016200	DECK SLAB REPAIR (PARTIAL)	SQ YD	82.5			18.6	10.0	38.3	15.6
**	K0036120	MULCH PLACEMENT 4"	SQ YD	4,150	4,150					
	Z0018500	DRAINAGE STRUCTURES TO BE CLEANED	EACH	738	738					
**	K1003660	MOWING CYCLES	EACH	2	2					
	Z0018600	DRAINAGE STRUCTURES TO BE RECONSTRUCTED	EACH	27	27					
	XX005656	INLET FILTER CLEANING	EACH	738	738					
	Z0030250	IMPACT ATTENUATORS, TEMPORARY (NON-REDIRECTIVE), TEST LEVEL 3	EACH	18	18					
	Z0030330	IMPACT ATTENUATORS, RELOCATE (FULLY REDIRECTIVE), TEST LEVEL 3	EACH	2	2					
	Z0030260	IMPACT ATTENUATORS, TEMPORARY (FULLY REDIRECTIVE, NARROW), TEST LEVEL 3	EACH	2	2					
	Z0030350	IMPACT ATTENUATORS, RELOCATE (NON-REDIRECTIVE), TEST LEVEL 3	EACH	13	13					
	Z0048685	RAILROAD PROTECTIVE LIABILITY INSURANCE	L SUM	1	1					
**	X2186500	ASPHALTIC EMULSION SLURRY SEAL	SQ YD	10,000	10,000					
	Z0073200	TEMPORARY SHORING AND CRIBBING	EACH	6						6
	Z0070600	TRAINEES	HOUR	1500	1500					
	X0326768	CONDUIT IN TRENCH, HIGH DENSITY POLYETHYLENE, COILABLE	FOOT	100		100				
**	X0325223	FIBER ASPHALT	POUND	334	334					
	X0326765	CLEANING AND PAINTING EXPOSED REBAR (SPECIAL)	SQ FT	10					10	
**	X0326701	WEED CONTROL, BROADLEAF IN TURF	POUND	0.8	0.8					
**	X0326766	CLEAN & RESEAL RELIEF JOINT	FOOT	798.5			189.0	217.5	144.0	248.0
**	X0326843	STAINING EXISTING COLORED CONCRETE SURFACES	SQ FT	2,000	2,000					
	X0326769	REMOVE AND REINSTALL CHAIN LINK FENCE POST	EACH	7				7		

△ - Non-participating
 * - Specialty Items
 ○ - 1080

** FOR LOCATIONS AND EXTENT OF WORK NOT SHOWN IN THE PLANS, THE CONTRACTOR SHALL COORDINATE WITH THE ENGINEER AND CONTACT RICK WANNER, ROADSIDE DEVELOPMENT ARCHITECT, IDOT ROADSIDE DEVELOPMENT UNIT AT (847) 705-4172 AT LEAST 72 HOURS PRIOR TO STARTING WORK.

Rev. 1-4-10

Rev.

FILE NAME =	DESIGNED - AJP	REVISED -	benesch	STATE OF ILLINOIS DEPARTMENT OF TRANSPORTATION	SUMMARY OF QUANTITIES			F.A.I. RTE.	SECTION	COUNTY	TOTAL SHEETS	SHEET NO.
...ppr1n_ABC_C2_sq_83.dgn	DRAWN - TMB	REVISED -						290	(3031.1, ETC., 3838/RS-5	COOK	298	5
USER NAME = tblank	CHECKED - JMM	REVISED -						CONTRACT NO. 60G52				
PLOT DATE = 10/16/09	DATE - 10/16/09	REVISED -						SCALE: N.T.S.	SHEET NO. 3 OF 3 SHEETS	STA. TO STA.	FED. ROAD DIST. NO.	ILLINOIS FED. AID PROJECT

UPSTREAM MH STA - O/S*	DOWNSTREAM MH STA - O/S*	PIPE SIZE	LOCATION DIST. FROM US MH	MAIN DRAIN CLEANING	APPROXIMATE VOLUME OF DEBRIS
FROM EB ALIGNMENT	FROM EB ALIGNMENT	H X W	FT	FT	CU. YD
575+00 - 80' L	581+30 - 5' R	6' x 4'9"	321.8	5.0	1.6
575+00 - 80' L	581+30 - 5' R	6' x 4'9"	10.5	10.0	2.0
581+30 - 5' R	587+75 - 5' R	6' x 4'9"	275.1	2.0	0.5
587+75 - 5' R	593+50 - 5' R	6' x 4'9"	0.0	550.0	10.0
593+50 - 5' R	600+00 - 5' R	6' x 4'8"	365.4	319.0	35.0
600+00 - 5' R	606+10 - 5' R	6' x 4'8"	605.2	600.0	35.0
606+10 - 5' R	612+15 - 7' R	6' x 5'	239.0	200.0	20.0
612+15 - 7' R	618+25 - 17' R	6' x 5'	66.9	70.0	10.5
612+15 - 7' R	618+25 - 17' R	6' x 5'	110.0	25.0	5.0
612+15 - 7' R	618+25 - 17' R	6' x 5'	265.0	40.0	9.0
612+15 - 7' R	618+25 - 17' R	6' x 5'	323.6	2.0	0.5
618+25 - 17' R	625+40 - 17' R	6' x 5'	730.4	400.0	45.0
625+40 - 17' R	632+60 - 0'	6' x 5'	737.8	80.0	7.0
625+40 - 17' R	632+60 - 0'	6' x 5'	605.6	3.0	0.5
625+40 - 17' R	632+60 - 0'	6' x 5'	227.6	3.0	0.5
625+40 - 17' R	632+60 - 0'	6' x 5'	192.6	3.0	0.5
625+40 - 17' R	632+60 - 0'	6' x 5'	117.4	70.0	6.2
632+60 - 0'	641+15 - 110' L	6'6" x 6'6"	309.3	600.0	94.0
641+15 - 110' L	646+94 100' L	6'6" x 6'6"	212.4	366.6	40.0
641+15 - 110' L	646+94 100' L	6'5" x 6'5"	0.0	225.0	35.0
641+15 - 110' L	646+94 100' L	6'5" x 6'5"	196.2	3.0	0.5
646+94 100' L	651+75 - 85' L	6'6" x 6'6"	471.6	470.0	30.0
646+94 100' L	651+75 - 85' L	6'6" x 6'6"	52.1	2.0	0.5
651+75 - 85' L	658+80 - 120' L	6'6" x 6'6"	701.8	702.0	40.0
672+15 - 120' L	678+80 - 120' L	6'11" x 6'4"	626.7	150.0	17.0
678+80 - 120' L	686+80 - 120' L	6'11" x 6'4"	100.0	10.0	1.0
678+80 - 120' L	686+80 - 120' L	6'11" x 6'4"	17.6	10.0	1.0
686+80 - 120' L	693+00 - 120' L	6'11" x 6'4"	89.1	235.0	15.0
693+00 - 120' L	698+85 - 120' L	6'11" x 6'4"	170.0	75.0	10.0
698+85 - 120' L	705+60 - 100' L	6'11" x 6'4"	336.0	20.0	5.0
698+85 - 120' L	705+60 - 100' L	6'11" x 6'4"	490.7	10.0	2.3
705+60 - 100' L	711+20 - 0'	6'11" x 6'4"	0.0	562.0	40.0
711+20 - 0'	716+20 - 45' R	6'11" x 6'4"	0.0	520.0	36.0
716+20 - 45' R	719+28 - 78' R	6'11" x 6'4"	0.0	300.0	21.0
723+00 - 0'	719+28 - 78' R	5'10" x 5'5"	0.0	397.0	40.0
728+00 - 0'	723+00 - 0'	5'10" x 5'5"	0.0	543.0	25.0
733+15 - 0'	728+00 - 0'	5'10" x 5'5"	513.9	514.0	50.0
739+00 - 55' R	733+15 - 0'	5'10" x 5'5"	0.0	582.0	46.0
745+15 - 50' R	739+00 - 55' R	5'10" x 5'5"	613.0	613.0	60.0
750+75 - 0'	745+15 - 50' R	6' x 5'9"	0.0	604.0	60.0
756+15 - 40' R	750+75 - 0'	6' x 5'9"	23.2	510.0	50.0
762+65 - 10' R	756+15 - 40' R	6' x 5'9"	438.6	220.0	28.0
767+40 - 50' R	762+65 - 10' R	6' x 5'9"	161.5	351.0	36.0
770+65 - 55' R	767+40 - 50' R	6' x 5'9"	325.1	280.0	30.0
776+75 - 40' R	770+65 - 55' R	6'2" x 5'10"	0.0	601.0	65.0
782+70 - 40' R	776+75 - 40' R	6'2" x 5'10"	0.0	603.0	67.0
788+65 - 40' R	782+70 - 40' R	6'2" x 5'10"	0.0	595.0	65.0
794+30 - 40' R	788+65 - 40' R	6'2" x 5'10"	596.3	596.0	65.0
800+75 - 40' R	794+30 - 40' R	6'2" x 5'10"	645.2	547.0	60.0
807+00 - 40' R	800+75 - 40' R	6'2" x 5'10"	645.2	645.2	71.0
810+00 - 40' R	807+00 - 40' R	5'5" x 5'3"	0.0	308.0	41.0
815+85 - 45' R	810+00 - 40' R	5'5" x 5'3"	0.0	584.0	25.0
821+75 - 0'	815+85 - 45' R	5'5" x 5'3"	0.0	590.0	50.0
823+75 - 40' R	821+75 - 0'	5'5" x 5'3"	150.6	65.0	6.0
830+35 - 40' R	823+75 - 40' R	5'5" x 5'3"	658.8	659.0	90.0
835+60 - 50' R	830+35 - 40' R	5'5" x 5'3"	562.1	499.0	69.0
836+70 - 50' R	835+60 - 50' R	5'5" x 5'3"	120.1	120.0	16.0
841+50 - 50' R	836+70 - 50' R	4'8" x 4'2"	264.0	5.0	0.5
849+00 - 50' R	841+50 - 50' R	4'8" x 4'2"	220.3	1.0	0.1
852+35 - 40' R	849+00 - 50' R	4'8" x 4'2"	90.6	5.0	0.5
852+35 - 40' R	849+00 - 50' R	4'8" x 4'2"	274.9	5.0	0.5
852+35 - 40' R	849+00 - 50' R	4'8" x 4'2"	308.7	5.0	0.5
852+35 - 40' R	849+00 - 50' R	4'8" x 4'2"	327.2	10.0	1.0
857+25 - 50' R	852+35 - 40' R	4'8" x 4'2"	24.8	5.0	0.5
857+25 - 50' R	852+35 - 40' R	4'8" x 4'2"	336.8	5.0	0.5
857+25 - 50' R	852+35 - 40' R	4'8" x 4'2"	402.0	5.0	0.5
857+25 - 50' R	852+35 - 40' R	4'8" x 4'2"	423.4	5.0	0.5
857+25 - 50' R	852+35 - 40' R	4'8" x 4'2"	455.6	5.0	0.5
857+25 - 50' R	852+35 - 40' R	4'8" x 4'2"	477.9	5.0	0.5
863+85 - 45' R	857+25 - 50' R	4'8" x 4'2"	48.0	5.0	0.5
863+85 - 45' R	857+25 - 50' R	4'8" x 4'2"	175.0	5.0	0.5
863+85 - 45' R	857+25 - 50' R	4'8" x 4'2"	220.7	5.0	0.5
863+85 - 45' R	857+25 - 50' R	4'8" x 4'2"	292.3	5.0	0.5
863+85 - 45' R	857+25 - 50' R	4'8" x 4'2"	370.4	5.0	0.5
863+85 - 45' R	857+25 - 50' R	4'8" x 4'2"	693.4	200.0	12.0
868+00 - 40' R	863+85 - 45' R	4'8" x 4'2"	85.9	5.0	0.5
868+00 - 40' R	863+85 - 45' R	4'8" x 4'2"	165.7	5.0	0.5
868+00 - 40' R	863+85 - 45' R	4'8" x 4'2"	370.0	40.0	4.0
TOTAL				18005	

UPSTREAM MH STA - O/S*	DOWNSTREAM MH STA - O/S*	PIPE SIZE	LOCATION DIST. FROM US MH	MAIN DRAIN JOINT REPAIR
FROM EB ALIGNMENT	FROM EB ALIGNMENT	H X W	FT	FT
575+00 - 80' L	581+30 - 5' R	6' x 4'9"	208.3	2.0
575+00 - 80' L	581+30 - 5' R	6' x 4'9"	143.2	15.7
581+30 - 5' R	587+75 - 5' R	6' x 4'9"	142.4	2.0
581+30 - 5' R	587+75 - 5' R	6' x 4'9"	184.2	2.0
581+30 - 5' R	587+75 - 5' R	6' x 4'9"	275.1	3.0
581+30 - 5' R	587+75 - 5' R	6' x 4'9"	662.8	4.0
587+75 - 5' R	593+50 - 5' R	6' x 4'9"	181.8	2.0
587+75 - 5' R	593+50 - 5' R	6' x 4'9"	237.2	3.0
593+50 - 5' R	600+00 - 5' R	6' x 4'8"	170.6	2.0
600+00 - 5' R	606+10 - 5' R	6' x 4'8"	553.7	2.0
612+15 - 7' R	618+25 - 17' R	6' x 5'	146.9	2.0
612+15 - 7' R	618+25 - 17' R	6' x 5'	305.1	2.0
612+15 - 7' R	618+25 - 17' R	6' x 5'	416.7	2.0
618+25 - 17' R	625+40 - 17' R	6' x 5'	689.4	3.5
618+25 - 17' R	625+40 - 17' R	6' x 5'	602.6	6.0
625+40 - 17' R	632+60 - 0'	6' x 5'	605.6	5.0
625+40 - 17' R	632+60 - 0'	6' x 5'	556.6	3.5
632+60 - 0'	641+15 - 110' L	6'6" x 6'6"	419.2	2.0
632+60 - 0'	641+15 - 110' L	6'6" x 6'6"	430.5	2.0
632+60 - 0'	641+15 - 110' L	6'6" x 6'6"	609.9	2.0
641+15 - 110' L	646+94 100' L	6'5" x 6'5"	236.2	2.0
641+15 - 110' L	646+94 100' L	6'5" x 6'5"	245.4	2.0
651+75 - 85' L	658+80 - 120' L	6'6" x 6'6"	23.0	3.0
658+80 - 120' L	665+80 - 120' L	6'6" x 6'6"	0.9	2.0
658+80 - 120' L	665+80 - 120' L	6'6" x 6'6"	10.0	2.0
672+15 - 120' L	678+80 - 120' L	6'11" x 6'4"	17.6	4.0
693+00 - 120' L	698+85 - 120' L	6'11" x 6'4"	377.5	9.5
698+85 - 120' L	705+60 - 100' L	6'11" x 6'4"	527.1	18.5
711+20 - 0'	716+20 - 45' R	6'11" x 6'4"	517.7	22.0
716+20 - 45' R	719+28 - 78' R	6'11" x 6'4"	94.5	7.5
716+20 - 45' R	719+28 - 78' R	6'11" x 6'4"	197.7	18.5
723+00 - 0'	719+28 - 78' R	5'10" x 5'5"	28.4	4.0
723+00 - 0'	719+28 - 78' R	5'10" x 5'5"	267.3	2.0
728+00 - 0'	723+00 - 0'	5'10" x 5'5"	72.2	2.0
728+00 - 0'	723+00 - 0'	5'10" x 5'5"	346.2	3.5
733+15 - 0'	728+00 - 0'	5'10" x 5'5"	11.4	9.5
733+15 - 0'	728+00 - 0'	5'10" x 5'5"	453.2	2.0
739+00 - 55' R	733+15 - 0'	5'10" x 5'5"	254.5	16.0
745+15 - 50' R	739+00 - 55' R	5'10" x 5'5"	173.6	2.0
745+15 - 50' R	739+00 - 55' R	5'10" x 5'5"	602.0	2.0
750+75 - 0'	745+15 - 50' R	6' x 5'9"	39.5	2.0
750+75 - 0'	745+15 - 50' R	6' x 5'9"	542.4	5.0
776+75 - 40' R	770+65 - 55' R	6'2" x 5'10"	338.4	16.0
782+70 - 40' R	776+75 - 40' R	6'2" x 5'10"	6.9	2.0
782+70 - 40' R	776+75 - 40' R	6'2" x 5'10"	119.0	16.0
800+75 - 40' R	794+30 - 40' R	6'2" x 5'10"	492.5	2.0
800+75 - 40' R	794+30 - 40' R	6'2" x 5'10"	637.4	16.0
807+00 - 40' R	800+75 - 40' R	6'2" x 5'10"	100.6	16.0
815+85 - 45' R	810+00 - 40' R	5'5" x 5'3"	212.0	14.0
815+85 - 45' R	810+00 - 40' R	5'5" x 5'3"	121.7	14.0
823+75 - 40' R	821+75 - 0'	5'5" x 5'3"	55.3	14.0
841+50 - 50' R	836+70 - 50' R	4'8" x 4'2"	456.0	12.0
849+00 - 50' R	841+50 - 50' R	4'8" x 4'2"	480.7	2.0
863+85 - 45' R	857+25 - 50' R	4'8" x 4'2"	442.1	12.0
868+00 - 40' R	863+85 - 45' R	4'8" x 4'2"	405.9	12.0
TOTAL				357

* THE STATIONS PROVIDED FOR THE PROPOSED CLEANING AND REPAIR LOCATIONS ARE BASED ON PREVIOUS PLANIMETRICS AND AERIAL PHOTOGRAPHY, AND IS NOT THE RESULT OF A GROUND SURVEY. THE STATIONING IS PROVIDED FOR REFERENCE PURPOSES ONLY.

Added Sheet 12/21/2009, LIN

FILE NAME *	DESIGNED - SGL	REVISED 12/21/2009
#FILE#	DRAWN - SGL	REVISED -
USER NAME = #USER#	CHECKED - FML	REVISED -
PLOT DATE = #DATE#	DATE - 12/2009	REVISED -



STATE OF ILLINOIS
DEPARTMENT OF TRANSPORTATION

SCHEDULE OF QUANTITIES

SCALE: SHEET NO. 1 OF 2 SHEETS STA. TO STA.

F.A.I. RTE.	SECTION	COUNTY	TOTAL SHEETS	SHEET NO.
290	(3031, ETC., 3838)RS-5	COOK	298	27A
FED. ROAD DIST. NO. [ILLINOIS] FED. AID PROJECT			CONTRACT NO. 60652	

DRAINAGE STRUCTURE STA - O/S*	DRAINAGE STRUCTURES TO BE CLEANED
FROM EB ALIGNMENT	EACH
575+00 - 80' L	1
581+30 - 5' R	1
587+75 - 5' R	1
593+50 - 5' R	1
600+00 - 5' R	1
606+10 - 5' R	1
612+15 - 7' R	1
618+25 - 17' R	1
625+40 - 17' R	1
632+60 - 0'	1
641+15 - 110' L	1
646+94 100' L	1
651+75 - 85' L	1
658+80 - 120' L	1
672+15 - 120' L	1
678+80 - 120' L	1
686+80 - 120' L	1
693+00 - 120' L	1
698+85 - 120' L	1
705+60 - 100' L	1
711+20 - 0'	1
716+20 - 45' R	1
719+28 - 78' R	1
723+00 - 0'	1
728+00 - 0'	1
733+15 - 0'	1
739+00 - 55' R	1
745+15 - 50' R	1
750+75 - 0'	1
756+15 - 40' R	1
762+65 - 10' R	1
767+40 - 50' R	1
770+65 - 55' R	1
776+75 - 40' R	1
782+70 - 40' R	1
788+65 - 40' R	1
794+30 - 40' R	1
800+75 - 40' R	1
807+00 - 40' R	1
810+00 - 40' R	1
815+85 - 45' R	1
821+75 - 0'	1
823+75 - 40' R	1
830+35 - 40' R	1
835+60 - 50' R	1
836+70 - 50' R	1
841+50 - 50' R	1
849+00 - 50' R	1
852+35 - 40' R	1
857+25 - 50' R	1
863+85 - 45' R	1
868+00 - 40' R	1
JOBSITE	686
TOTAL	738

UPSTREAM MH STA - O/S*	DOWNSTREAM MH STA - O/S*	PIPE SIZE	LOCATION DIST. FROM US MH	APPROXIMATE VOLUME OF PATCHING REQUIRED	STRUCTURAL REPAIR OF CONCRETE (DEPTH EQUAL TO OR LESS THAN 5 IN.)	STRUCTURAL REPAIR OF CONCRETE (DEPTH GREATER THAN 5 IN.)
FROM EB ALIGNMENT	FROM EB ALIGNMENT	H X W	FT	CU. YD	SQ. FT.	SQ. FT.
678+80 - 120' L	686+80 - 120' L	6'11" x 6'4"	736.0	0.3	2.0	-
678+80 - 120' L	686+80 - 120' L	6'11" x 6'4"	781.8	1.5	-	40.0
693+00 - 120' L	698+85 - 120' L	6'11" x 6'4"	9.5	1.5	-	40.0
693+00 - 120' L	698+85 - 120' L	6'11" x 6'4"	376.6	0.3	2.0	-
693+00 - 120' L	698+85 - 120' L	6'11" x 6'4"	379.0	1.0	-	32.0
693+00 - 120' L	698+85 - 120' L	6'11" x 6'4"	382.9	1.0	-	32.0
693+00 - 120' L	698+85 - 120' L	6'11" x 6'4"	478.3	0.3	2.0	-
711+20 - 0'	716+20 - 45' R	6'11" x 6'4"	8.1	1.5	-	40.0
733+15 - 0'	728+00 - 0'	5'10" x 5'5"	494.6	0.3	-	16.0
823+75 - 40' R	821+75 - 0'	5'5" x 5'3"	128.1	1.0	2.0	-
857+25 - 50' R	852+35 - 40' R	4'8" x 4'2"	444.2	0.3	-	16.0
863+85 - 45' R	857+25 - 50' R	4'8" x 4'2"	538.0	0.3	16.0	-
TOTAL					30	216

PUMP STATION	AREA	DEPTH	VOLUME OF WET PIT	VOLUME OF DEBRIS IN WET PIT (ASSUME 25% FULL)	CLEANING OF WET PIT PRIOR TO CONSTRUCTION**	CLEANING OF WET PIT AFTER COMPLETION OF CONSTRUCTION**	CLEANING OF WET PIT TOTAL**
NO.	SQ YD	FT	CU YD	CU YD	TONS	TONS	TONS
4	127	64	2709	677	1006	1006	2012
20	14	17	79	20	29	29	58

* THE STATIONS PROVIDED FOR THE PROPOSED CLEANING AND REPAIR LOCATIONS ARE BASED ON PREVIOUS PLANIMETRICS AND AERIAL PHOTOGRAPHY, AND IS NOT THE RESULT OF A GROUND SURVEY. THE STATIONING IS PROVIDED FOR REFERENCE PURPOSES ONLY.

** AN ESTIMATED DEBRIS DENSITY OF 110 LB/CF HAS BEEN UTILIZED.

Added Sheet 12/21/2009. LIN

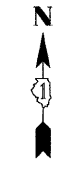
FILE NAME *	DESIGNED - SGL	REVISED 12/21/2009
#FILE#	DRAWN - SGL	REVISED -
USER NAME = #USER#	CHECKED - FML	REVISED -
PLOT DATE = #DATE#	DATE - 12/2009	REVISED -



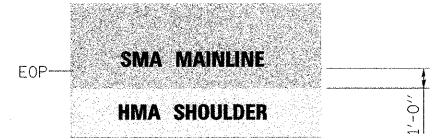
STATE OF ILLINOIS
DEPARTMENT OF TRANSPORTATION

SCHEDULE OF QUANTITIES			
SCALE:	SHEET NO. 2 OF 2 SHEETS	STA.	TO STA.

F.A.I. RTE.	SECTION	COUNTY	TOTAL SHEETS	SHEET NO.
290	(3031.1, ETC., 3838)RS-5	COOK	298	27B
FED. ROAD DIST. NO. ILLINOIS FED. AID PROJECT			CONTRACT NO. 60652	



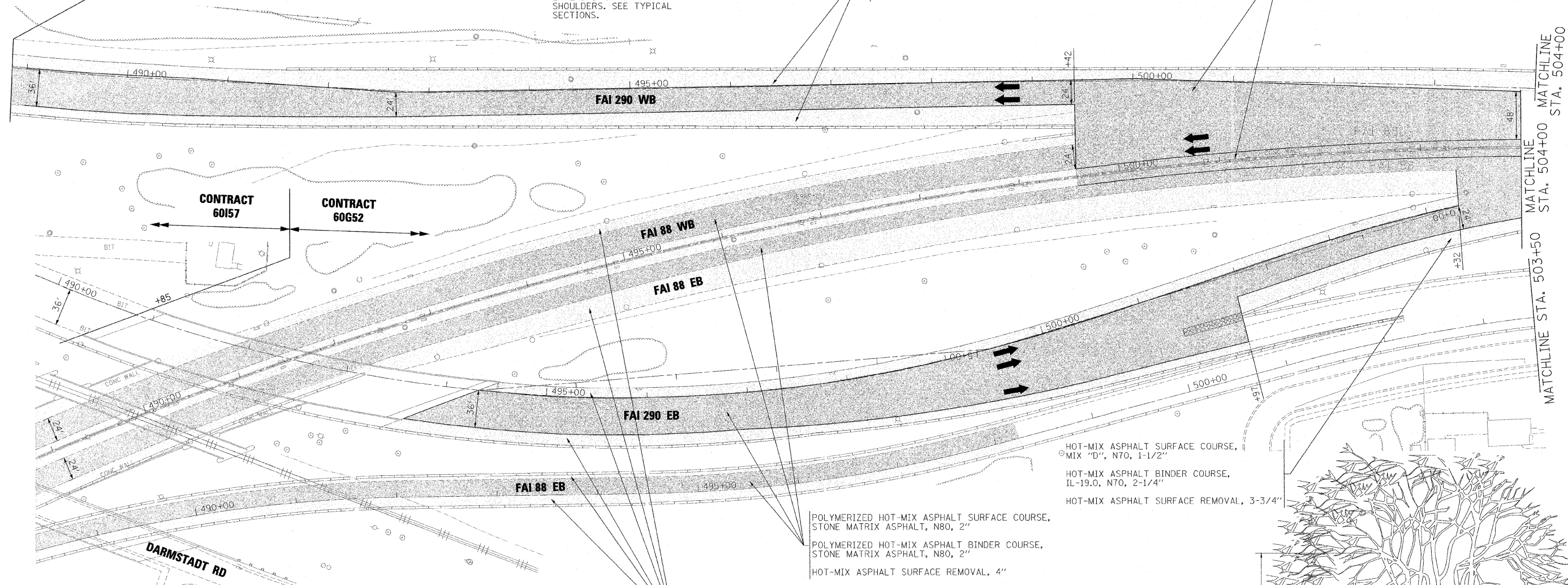
CONTRACT 60157 CONTRACT 60G52



NOTE:
MAINLINE PAVING TO EXTEND 1' ONTO HMA SHOULDERS. SEE TYPICAL SECTIONS.

HOT-MIX ASPHALT SURFACE COURSE, MIX "D", N70, 1-1/2"
HOT-MIX ASPHALT BINDER COURSE, IL-19.0, N70, 2-1/4"
HOT-MIX ASPHALT SURFACE REMOVAL, 3-3/4"

POLYMERIZED HOT-MIX ASPHALT SURFACE COURSE, STONE MATRIX ASPHALT, N80, 2"
POLYMERIZED HOT-MIX ASPHALT BINDER COURSE, STONE MATRIX ASPHALT, N80, 2"
HOT-MIX ASPHALT SURFACE REMOVAL, 4"



MATCHLINE STA. 504+00
MATCHLINE STA. 503+50

NOTES:

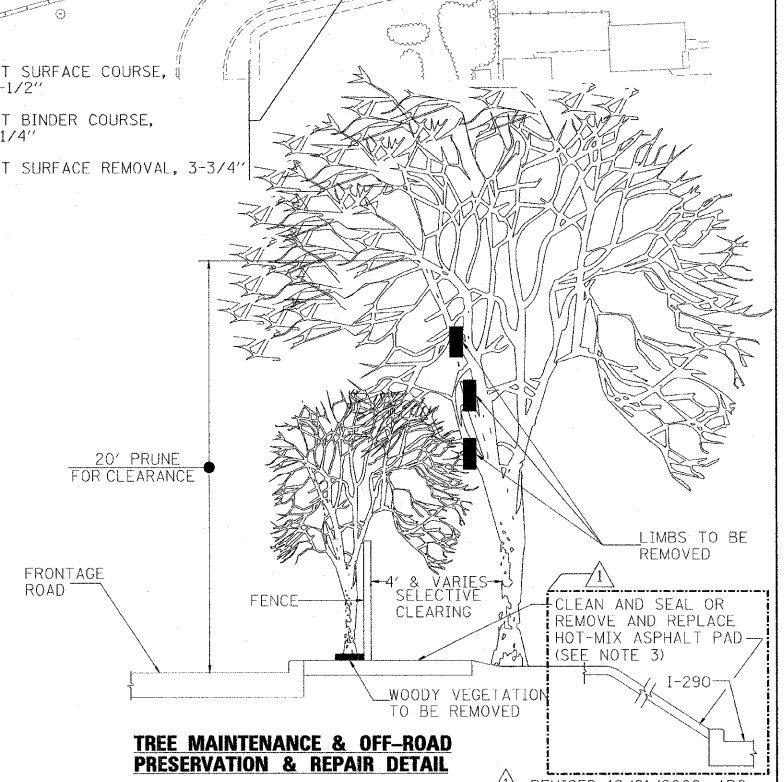
1. THE NATIONAL ARBORIST ASSOCIATION'S PRUNING STANDARDS FOR SHADE TREES CLASS II - STANDARD PRUNING SPECIFICATIONS SHALL BE FOLLOWED.
2. ALL TREES AND SHRUBS OR OTHER WOODY VEGETATION GROWING IN THE FENCE LINE AND ON THE FRONTAGE ROAD SIDE OF THE FENCE SHALL BE CUT FLUSH WITH THE GROUND AND THE STUMPS TREATED WITH A HERBICIDE TO PREVENT RESPROUTING.
3. CLEAN AND SEAL HOT-MIX ASPHALT PAD SHALL BE PAID FOR AS ASPHALTIC EMULSION SLURRY SEAL, FIBER ASPHALT AND BITUMINOUS MATERIALS (PRIME COAT). REMOVE AND REPLACE HOT-MIX ASPHALT PAD SHALL BE PAID FOR AS PAVED SHOULDER REMOVAL (SPECIAL) AND INCIDENTAL HOT-MIX ASPHALT SURFACING (SPECIAL).

TYPICAL APPLICATIONS OF THIS WORK INCLUDE, BUT ARE NOT LIMITED TO, ALL HOT-MIX ASPHALT PADS AT FENCING ALONG FRONTAGE ROADS, ALL HOT-MIX ASPHALT SIDE SLOPES AT EXIT AND ENTRANCE RAMPS AND BRIDGE APPROACHES, AND ALL HOT-MIX ASPHALT PADS AT ENDS OF BARRIER TERMINAL WALLS. FOR LOCATIONS AND EXTENT OF WORK, THE CONTRACTOR SHALL COORDINATE WITH THE ENGINEER AND CONTACT RICK WANNER, ROADSIDE DEVELOPMENT ARCHITECT, IDOT ROADSIDE DEVELOPMENT UNIT, AT (847) 705-4172 AT LEAST 72 HOURS PRIOR TO STARTING WORK.
THE PAD SHALL BE 4" THICK.

HOT-MIX ASPHALT SURFACE COURSE, MIX "D", N70, 1-1/2"
HOT-MIX ASPHALT BINDER COURSE, IL-19.0, N70, 2-1/4"
HOT-MIX ASPHALT SURFACE REMOVAL, 3-3/4"

POLYMERIZED HOT-MIX ASPHALT SURFACE COURSE, STONE MATRIX ASPHALT, N80, 2"
POLYMERIZED HOT-MIX ASPHALT BINDER COURSE, STONE MATRIX ASPHALT, N80, 2"
HOT-MIX ASPHALT SURFACE REMOVAL, 4"

HOT-MIX ASPHALT SURFACE COURSE, MIX "D", N70, 1-1/2"
HOT-MIX ASPHALT BINDER COURSE, IL-19.0, N70, 2-1/4"
HOT-MIX ASPHALT SURFACE REMOVAL, 3-3/4"



TREE MAINTENANCE & OFF-ROAD PRESERVATION & REPAIR DETAIL

REVISED 12/21/2009, ABC

FILE NAME =	DESIGNED - AJP	REVISED - 12/21/09
*FILE#	DRAWN - TMB	REVISED -
USER NAME = #USER#	CHECKED - JMM	REVISED -
PLOT DATE = #DATE#	DATE - 10/16/09	REVISED -

benesch

STATE OF ILLINOIS
DEPARTMENT OF TRANSPORTATION

Rev.

ROADWAY PLAN	
I-290 MAINLINE STA 489+00 TO STA 504+00	
SCALE: 1"=50'	SHEET NO. 1 OF 31 SHEETS STA. TO STA.

F.A.I. RTE.	SECTION	COUNTY	TOTAL SHEETS	SHEET NO.
290	(3031.1, ETC., 3B3BRS-5)	COOK	298	64
CONTRACT NO. 60G52			FED. ROAD DIST. NO. ILLINOIS FED. AID PROJECT	

STAGE III

STAGE III NOTES

1. SEQUENCE OF CONSTRUCTION: PAVEMENT PATCHING, HMA SURFACE REMOVAL AND PROPOSED HMA COURSES AS DETAILED IN EACH OPERATION SECTION. WORK CAN OCCUR CONCURRENTLY, BUT SEQUENCE SHALL BE MAINTAINED AND NOT CONFLICT. RAMP WORK WILL BE COMPLETED USING DISTRICT DETAIL TC-8 - FREEWAY AND EXIT RAMP CLOSURE DETAILS.
2. LANE AND RAMP CLOSURES ALLOWED AS STIPULATED IN THE SPECIAL PROVISIONS. CONTRACTOR MAY NOT CLOSE ADJACENT EXIT OR ENTRANCE RAMP AT THE SAME TIME.
3. LANE CLOSURES FOR RESURFACING OPERATIONS SHALL BE AS STIPULATED IN THE SPECIAL PROVISION "KEEPING THE EXPRESSWAY OPEN TO TRAFFIC."
4. LANE CLOSURES PER STANDARDS 701400, 701401 AND 701446.
5. REDUCE LANE WIDTH USING 35:1 TAPER PER DISTRICT DETAIL TC-9 - TRAFFIC CONTROL DETAILS FOR FREEWAY SINGLE AND MULTI-LANE WEAVE, A W5-1 (48 X 48) ROAD NARROWS SIGN WILL BE ERECTED 500' IN ADVANCE OF THE TAPER.
6. THE CONTRACTOR SHALL ERECT ROAD CONSTRUCTION AHEAD SIGNS (W20-I103(O-48) WITH FLASHING BEACON ON ALL ARTERIAL ROADWAYS APPROACHING INTERCHANGE RAMP.
7. GRADE DIFFERENTIAL BETWEEN LANES SHALL NOT EXCEED 2".
8. PARTIAL MILLING OF PAVEMENT FOR AN OPERATION WILL NOT BE PAID FOR SEPARATELY, BUT WILL BE PAID FOR AT THE FINAL MILLING THICKNESS SHOWN ON THE TYPICAL SECTIONS.
9. EPOXY PAVEMENT MARKING LINES SHALL BE USED FOR TEMPORARY PAVEMENT MARKINGS.
10. REMOVAL OF EXISTING PAVEMENT MARKING, WHEN REQUIRED, SHALL BE PAID FOR AS "PAVEMENT MARKING REMOVAL."
11. EXISTING OR TEMPORARY PAVEMENT MARKINGS REMOVED DURING MILLING OPERATIONS WILL NOT BE PAID FOR SEPARATELY.
12. CASTINGS EXPOSED IN TRAVEL LANES SHALL BE PROTECTED PER APPLICABLE PORTIONS OF ARTICLE 603.07 OF THE STANDARD SPECIFICATIONS. THIS WORK WILL NOT BE PAID FOR SEPARATELY, BUT SHALL BE INCLUDED IN THE VARIOUS HMA/SMA BINDER AND SURFACE COURSES PLACED.
13. OMIT STAGE III OPERATIONS THROUGH BRIDGE AND CONCRETE SECTIONS.
14. SIGNS SHALL BE INSTALLED AS INSTRUCTED BELOW.



SIGN SHALL BE INSTALLED IN ADVANCE OF ALL OPEN/EXIT RAMP WHEN THE RIGHT LANES ARE CLOSED.

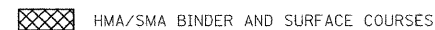
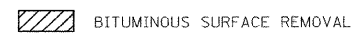
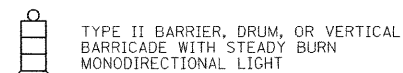


SIGN SHALL BE INSTALLED ON BOTH SIDES OF THE ROADWAY 500' IN ADVANCE OF AREAS WHERE THERE IS A GRADE DIFFERENTIAL BETWEEN LANES, AFTER EACH ENTRANCE RAMP AND A MINIMUM OF EVERY MILE.

15. THE CONTRACTOR SHALL COORDINATE THE ROADWAY AND STRUCTURAL WORK SO BITUMINOUS MATERIALS ARE NOT TRACKED ON THE BRIDGE DECKS BEFORE BEING SEALED.
16. "EPOXY PAVEMENT MARKING - LETTERS AND SYMBOLS" SHALL BE INSTALLED ON MAINLINE ROADWAY DURING STAGE III OPERATIONS, IN LOCATIONS WHERE LETTERS/SYMBOLS PAVEMENT MARKINGS EXIST PRIOR TO SURFACE REMOVAL.
17. WORK ZONE SPEED LIMIT SIGNS SHALL REMAIN IN PLACE UNTIL ALL BINDER IS PLACED.

LEGEND

- ① EXISTING PAVEMENT MARKING
- ② EPOXY PAVEMENT MARKING - LINE 5" (WHITE 10' DASH, 30' SKIP)
- ③ EPOXY PAVEMENT MARKING - LINE 4" (YELLOW LEFT & WHITE RIGHT)
- ④ PROPOSED PAVEMENT MARKING. SEE PAVEMENT MARKING PLANS.



NOTES

PATCHING TO BE COMPLETED IN STAGES 1 AND 2 UNDER PERMANENT LANE CLOSURES. ANY PATCHING NOT COMPLETED IN STAGES 1 AND 2 SHALL BE COMPLETED UNDER WEEKEND CLOSURES USING DISTRICT 1 DETAIL TC-25 TRAFFIC CONTROL DETAILS FOR FREEWAY CENTER LANE CLOSURE AND SHOULDER LANE CLOSURE. THE CLASS OF CONCRETE FOR CLASS A PATCHES SHALL BE PP-3 OR HIGHER.

THE CONTRACTOR SHALL STAGE RESURFACING OPERATIONS SUCH THAT THE CROSS SLOPE FROM THE CROWN OF THE ROADWAY TO THE OUTSIDE EDGE OF THE SHOULDER WILL NOT TRAP WATER ON OPEN TRAFFIC LANES.

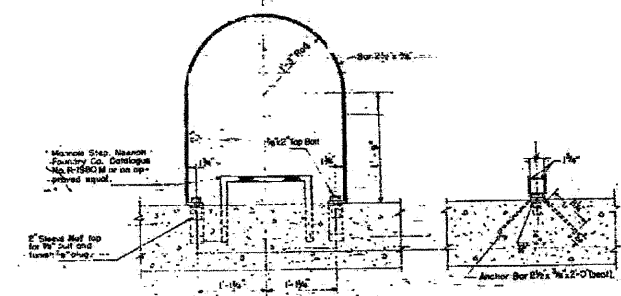
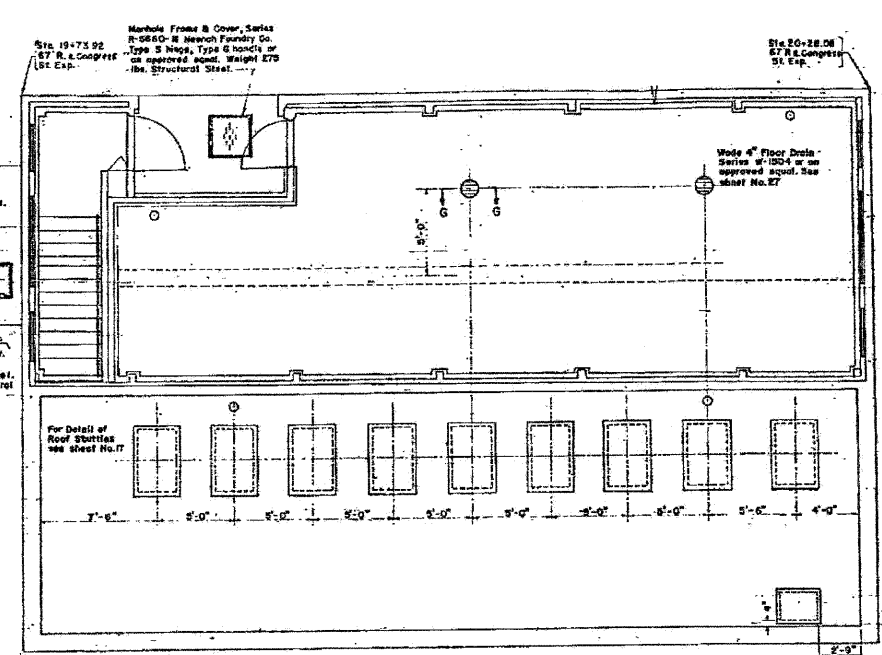
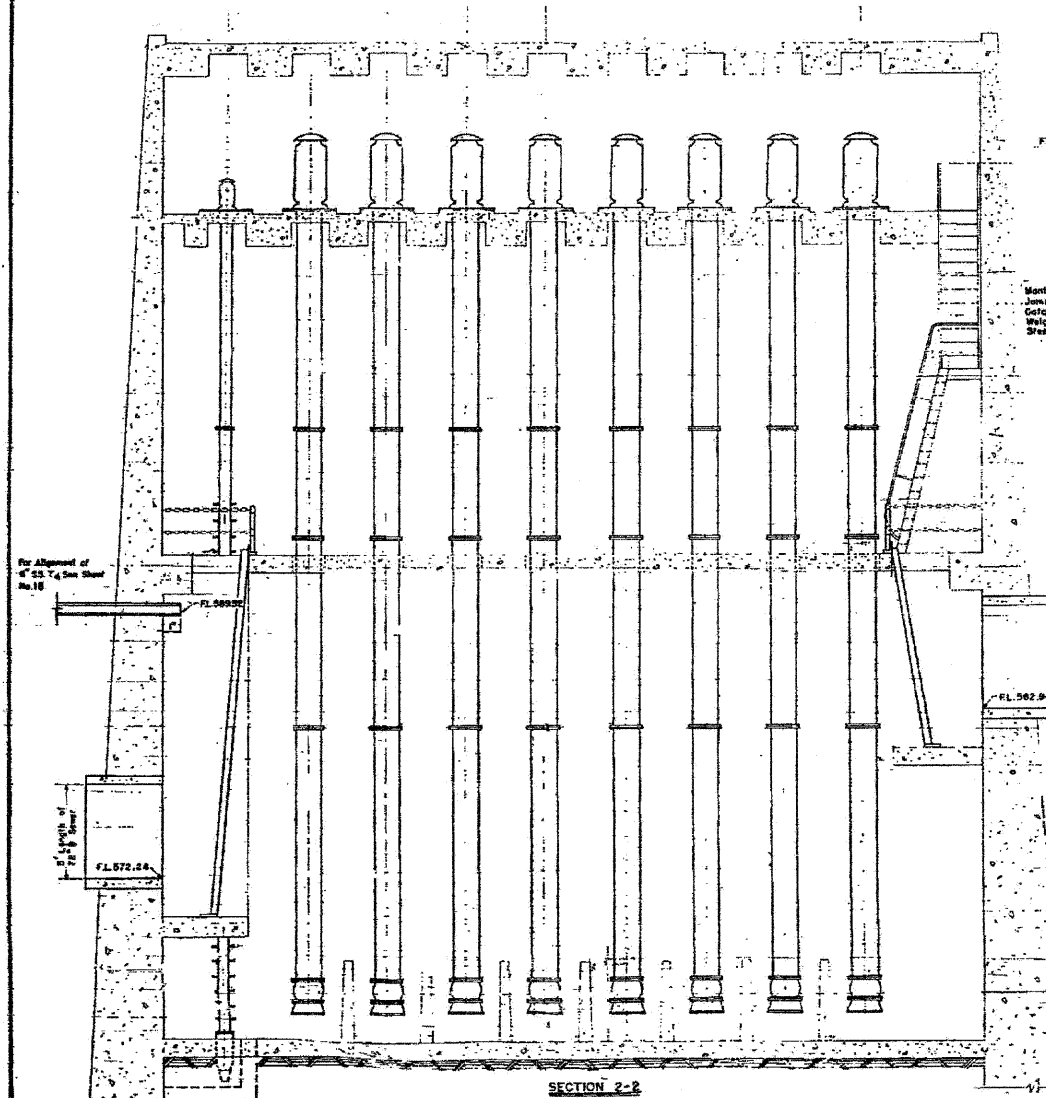
REVISD 12/21/2009, ABC

FILE NAME =	DESIGNED - AJP	REVISED - 12/21/09	benesch	STATE OF ILLINOIS DEPARTMENT OF TRANSPORTATION	MAINTENANCE OF TRAFFIC TYPICAL SECTION - STAGE 3	F.A.I. RTE.	SECTION	COUNTY	TOTAL SHEETS	SHEET NO.
#FILE#	DRAWN - TMB	REVISED -				290	(3031.1, ETC., 3838)RS-5	COOK	298	176
USER NAME = #USER#	CHECKED - JJT	REVISED -				CONTRACT NO. 60G52				
PLOT DATE = #DATE#	DATE - 10/16/09	REVISED -	SCALE:	SHEET NO. 82 OF 96 SHEETS	STA. TO STA.	FED. ROAD DIST. NO. ILLINOIS FED. AID PROJECT				

PS 4

FOR INFORMATION ONLY

SECTION 062-34202 MECHANICAL



NOTE: The 5' lengths of 7/8\" and 7/8\" Channel Steel shall be extra strength reinforced concrete column size, ASTM Designation C76, Table II. These beams will not be paid for separately but shall be included in the unit price bid per cubic yard of Class II Concrete. Total Weight of Structural Steel this sheet equals 2270 pounds.

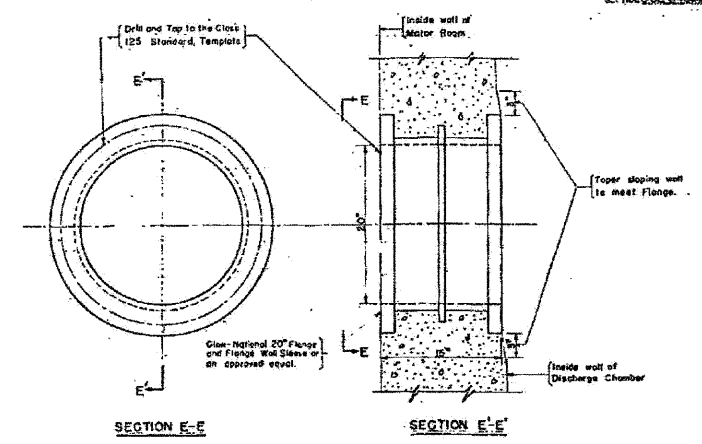
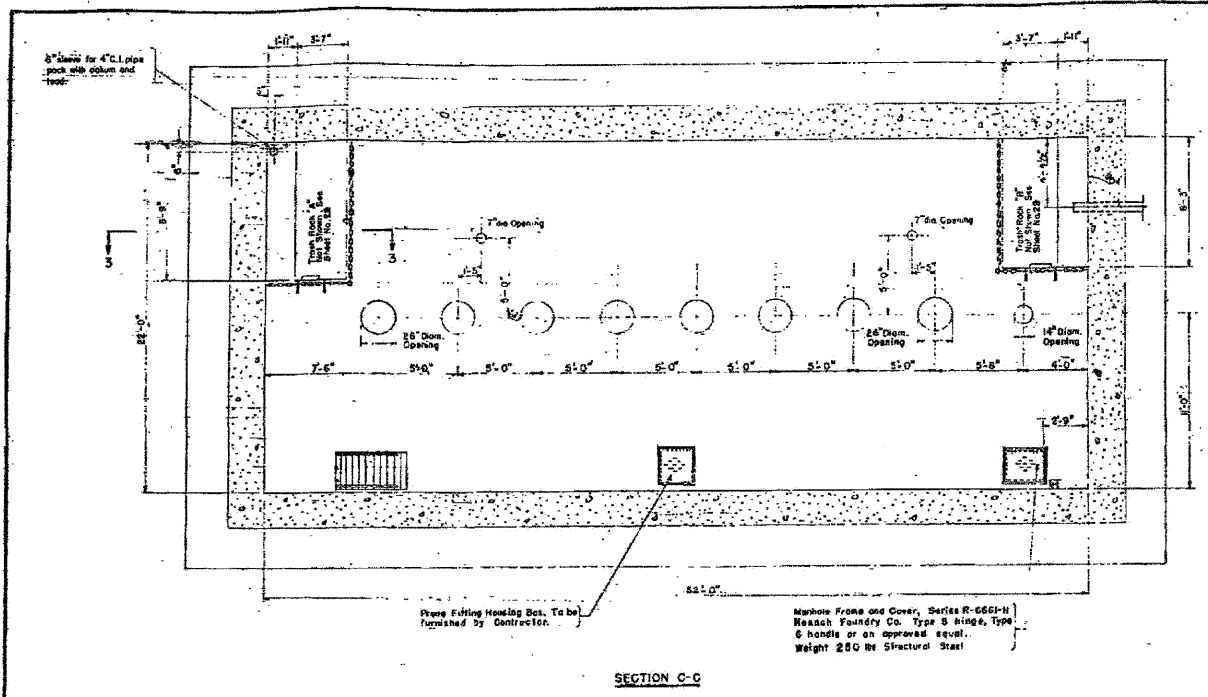
LADDER-GUARD (5 Required) Weight 225 lbs. Street Steel
MANHOLE STEPS (40 Required) Weight 800 lbs. Street Steel
Scale 1/4\"=1'-0\"

DEPARTMENT OF HIGHWAYS
CONGRESS ST. EXPRESSWAY
PUMPING STATION
MECHANICAL DETAILS
Scale 1/4\"=1'-0\"
Date 11-21-02 Rev. 1-11-02

Added Sheet 12/21/2009, LIN

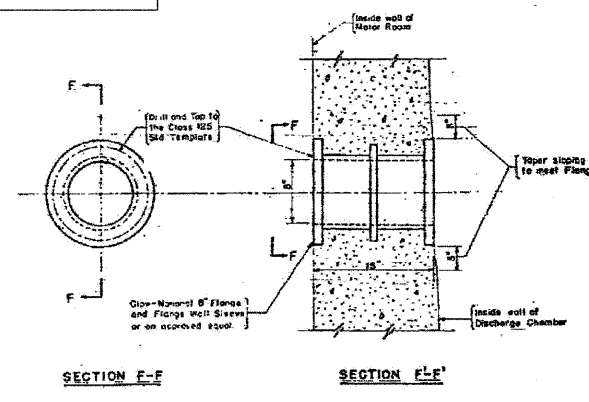
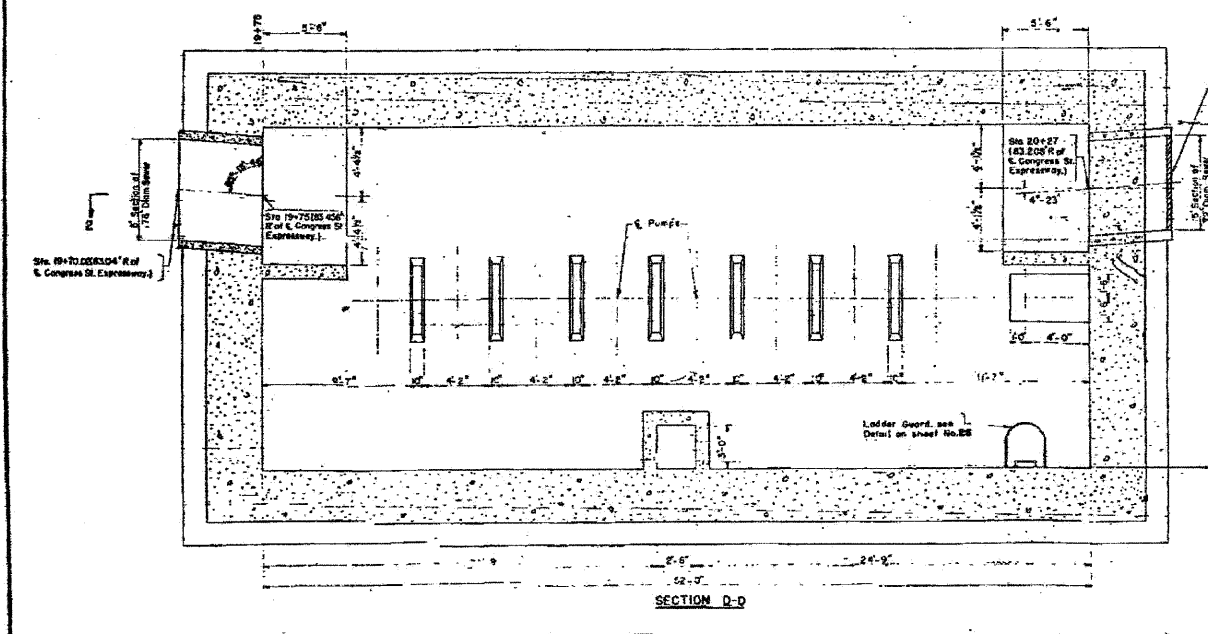
FILE NAME =	DESIGNED - SGL	REVISED 12/21/2009	<p>LIN ENGINEERING, LTD. Consulting Engineers Chatham, Illinois Westmont, Illinois</p>	<p>STATE OF ILLINOIS DEPARTMENT OF TRANSPORTATION</p>		<p>PUMP STATION NO. 4 RECORD DRAWINGS</p>		F.A.I. RTE.	SECTION	COUNTY	TOTAL SHEETS	SHEET NO.
#FILEL#	DRAWN - SGL	REVISED -						290	(3031.1, ETC., 3838)RS-5	COOK	298	251A
USER NAME = #USER#	CHECKED - FML	REVISED -						CONTRACT NO. 60652				
PLOT DATE = #DATE#	DATE - 12/2009	REVISED -						ILLINOIS FED. AID PROJECT				
					SCALE:	SHEET NO. 1 OF 2 SHEETS	STA.	TO STA.				

Scale: As Shown
 Date: 12/21/09
 No. 25B
 062 1950 23 1 39
 S.I. 062-34352.M.P.



PS 4

FOR INFORMATION ONLY



NOTE:
 Wall sleeves are not to be paid for separately but are to be included in the unit price bid per Storm Water Pump.
 From: Heavy Structural Steel, this steel weighs 250 lbs.

Scale: As Shown or as noted
 DEPARTMENT OF HIGHWAYS
 DIVISION OF CONSTRUCTION
 CONGRESS ST. EXPRESSWAY
 FLORISS, ST. LOUIS
 MECHANICAL DETAILS
 COMPUTED: J.C.B.
 DRAWN: J.C.B.
 CHECKED: J.C.B.
 No. 11-21-50

FILE NAME =	DESIGNED - SGL	REVISED 12/21/2009
#FILE#	DRAWN - SGL	REVISED -
USER NAME = #USER#	CHECKED - FML	REVISED -
PLOT DATE = #DATE#	DATE - 12/2009	REVISED -

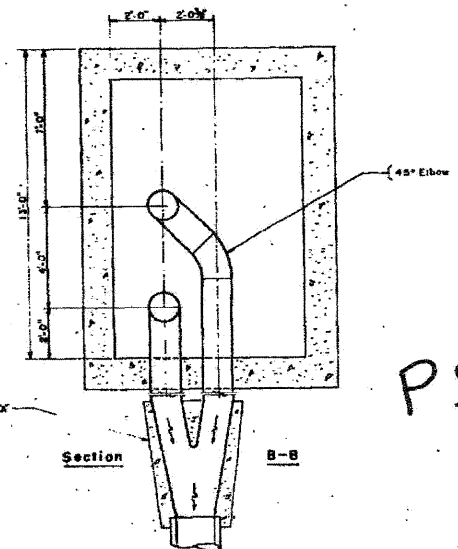
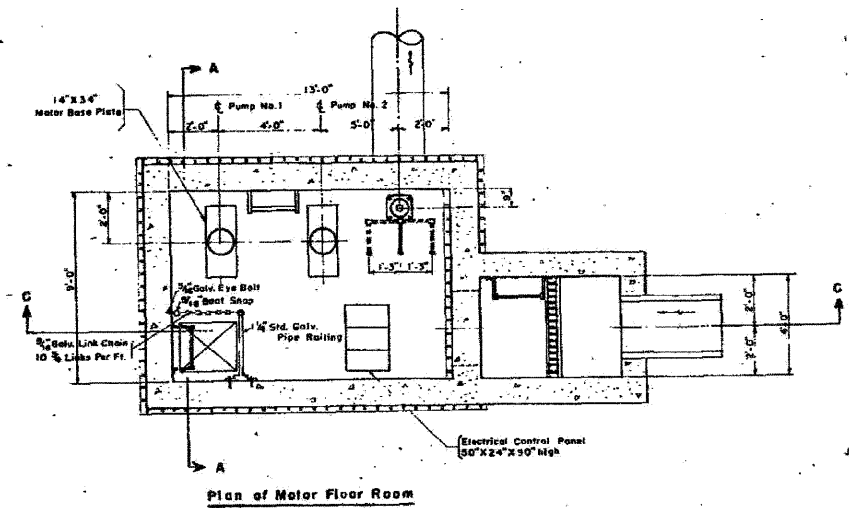
E LIN ENGINEERING, LTD.
 Consulting Engineers
 Chatham, Illinois Westport, Illinois

STATE OF ILLINOIS
 DEPARTMENT OF TRANSPORTATION

PUMP STATION NO. 4		SECTION		COUNTY	TOTAL SHEETS	SHEET NO.
RECORD DRAWINGS		290 (3031L, ETC., 3838)RS-5		COOK	298	251B
SCALE:		SHEET NO. 2 OF 2 SHEETS		STA.	TO STA.	
ILLINOIS FED. AID PROJECT						

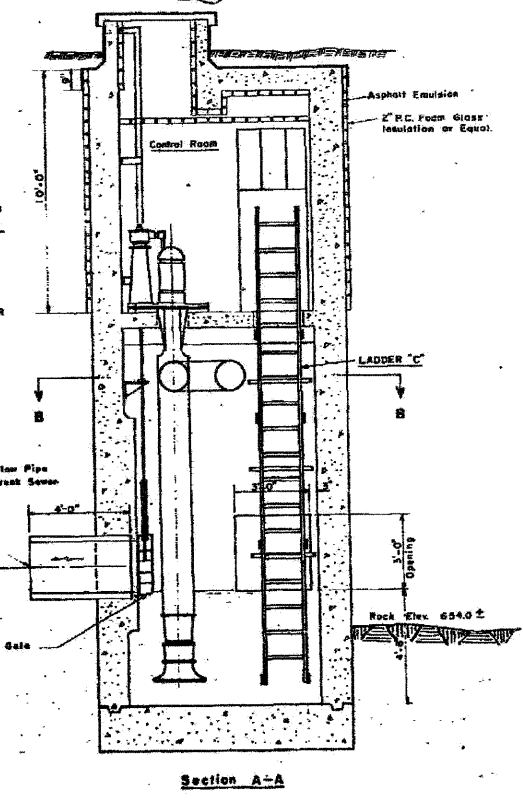
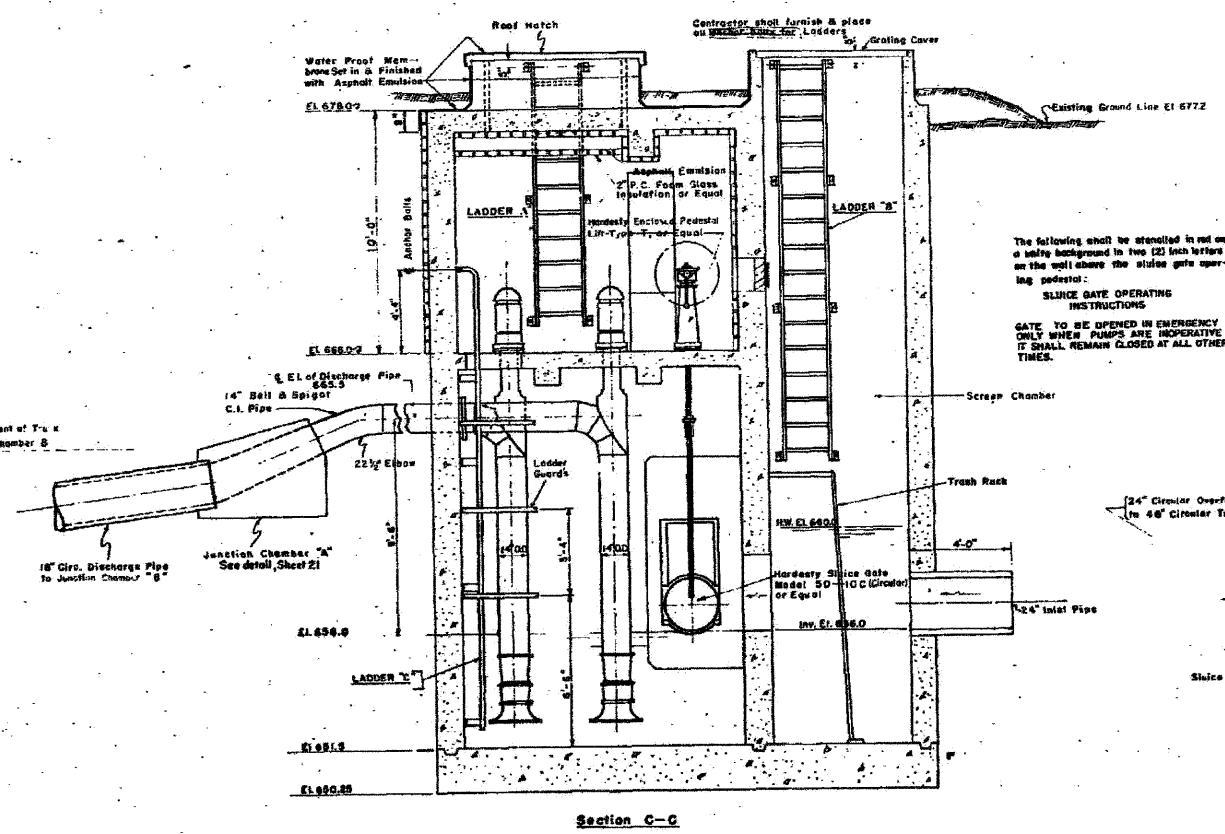
Added Sheet 12/21/2009, LIN

DATE: 12/21/09
 REVISED: 12/21/09
 SHEET NO. 21
 CONTRACT NO. 60652



PS 20

FOR INFORMATION ONLY



The following shall be stenciled in red on a white background in two (2) inch letters on the wall above the slide gate opening pedestal:
 SLIDE GATE OPERATING INSTRUCTIONS
 GATE TO BE OPENED IN EMERGENCY ONLY WHEN PUMPS ARE INOPERATIVE IT SHALL REMAIN CLOSED AT ALL OTHER TIMES.

NOTES:
 MATERIALS: Class "X" Concrete shall be used throughout.
 METHOD OF CONSTRUCTION: This work shall comply with Sections 12, 60 & 78 of the Standard and Supplemental Specifications unless Special Provisions shall be (1) except 2" in bottom slab. All inlet and outlet pipes and slide gates shall be set in the forms before the concrete is poured. All Construction Joints shall have copper water seals. All anchor bolts shall be set to match the holes of the equipment furnished by the contractor. The forms for hatches shall be set in place before the concrete is poured. The ball and socket cast iron pipe shall be held according to Sections 74 & 124.06 of the Specifications. Class "A" Excavation and Embankment in Rock shall conform to Section 50 of the Specifications.
 BASIS OF PAYMENT: This work will be paid for at the contract unit price for the several pay items constituting the structure and listed in the program. Items detailed on the "Miscellaneous Details" sheet will be paid for at the contract unit price per pound of structural steel except the 1/4" Wall Sill which will be paid for at the contract unit price bid per linear ft. of cast iron pipe, which price shall be payment in full for furnishing and installing all material, labor, tools and incidentals necessary to complete this work.

NOT TO SCALE

COUNTY OF COOK
 DEPARTMENT OF HIGHWAYS
 CONGRESS STREET EXPRESSWAY
 PUMP STATION
 AT STATION 45 + 20 (1/2 LEFT)
 APPROVED: [Signature]
 DATE: 12/21/09
 BY: [Signature]

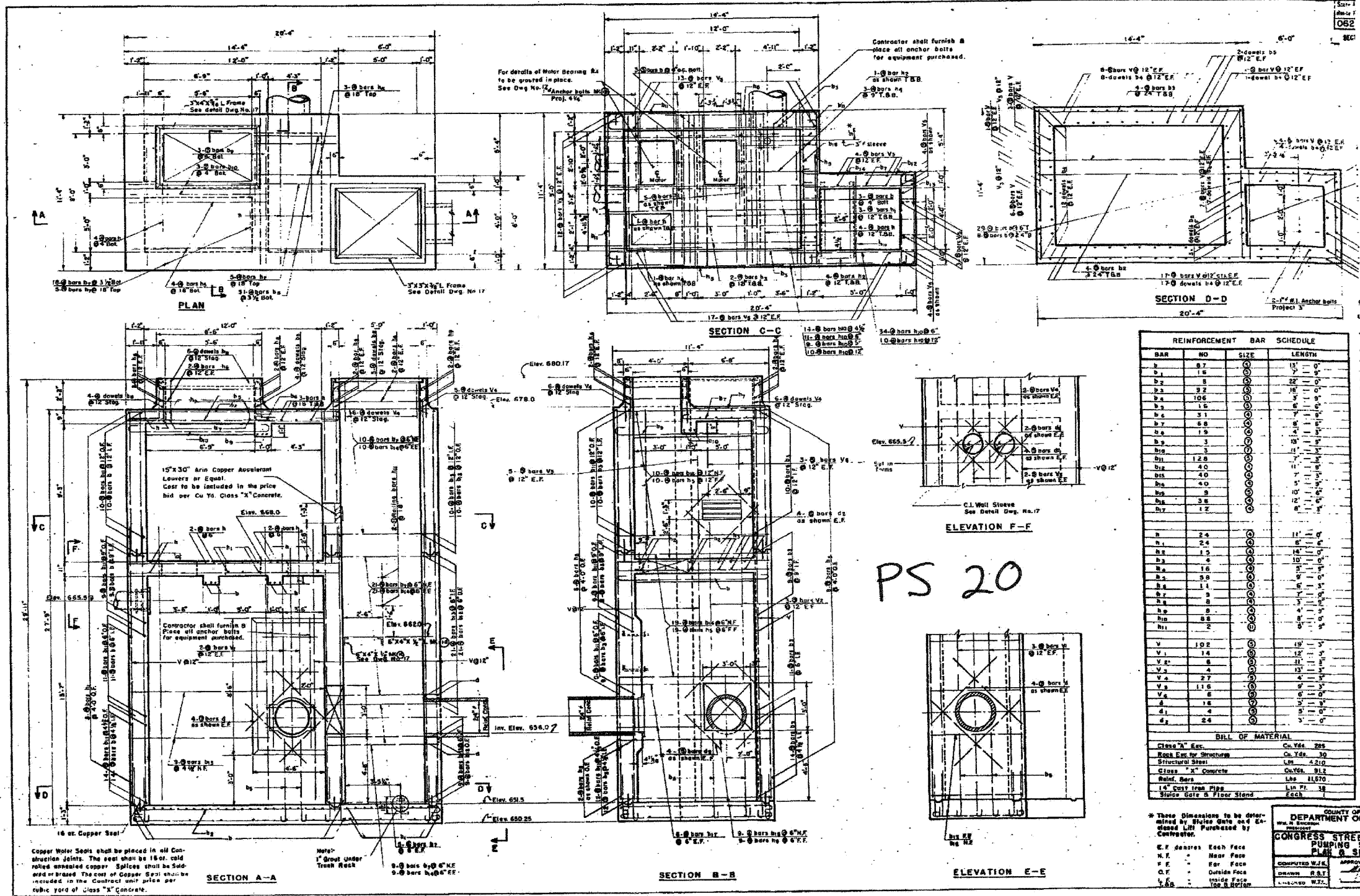
Added Sheet 12/21/2009, LIN

FILE NAME =	DESIGNED - SGL	REVISED 12/21/2009
#FILE#	DRAWN - SGL	REVISED -
USER NAME = #USER#	CHECKED - FML	REVISED -
PLOT DATE = #DATE#	DATE - 12/2009	REVISED -

E LIN ENGINEERING, LTD.
 Consulting Engineers
 Channah, Brook Westmont, Brook

STATE OF ILLINOIS
 DEPARTMENT OF TRANSPORTATION

PUMP STATION NO. 20		F.A.I. RTE.	SECTION	COUNTY	TOTAL SHEETS	SHEET NO.
RECORD DRAWINGS		290	(3031L, ETC., 3838)RS-5	COOK	298	251C
SCALE:	SHEET NO. 1 OF 2 SHEETS	STA.	TO STA.	CONTRACT NO. 60652		
ILLINOIS FED. AID PROJECT						



PS 20

BAR	NO	SIZE	LENGTH
B1	87	Ø	15' - 0"
B2	16	Ø	7' - 0"
B3	8	Ø	22' - 0"
B4	32	Ø	18' - 0"
B5	106	Ø	5' - 9"
B6	16	Ø	6' - 0"
B7	31	Ø	7' - 0"
B8	8	Ø	6' - 0"
B9	15	Ø	4' - 0"
B10	3	Ø	15' - 0"
B11	128	Ø	11' - 3"
B12	40	Ø	11' - 0"
B13	40	Ø	5' - 0"
B14	9	Ø	10' - 0"
B15	38	Ø	12' - 0"
B16	12	Ø	8' - 0"
B17	24	Ø	11' - 0"
B18	24	Ø	8' - 0"
B19	12	Ø	14' - 0"
B20	4	Ø	10' - 0"
B21	16	Ø	11' - 0"
B22	99	Ø	5' - 0"
B23	14	Ø	5' - 0"
B24	2	Ø	8' - 0"
B25	2	Ø	8' - 0"
B26	2	Ø	8' - 0"
B27	2	Ø	8' - 0"
B28	2	Ø	8' - 0"
B29	2	Ø	8' - 0"
B30	2	Ø	8' - 0"
B31	2	Ø	8' - 0"
B32	2	Ø	8' - 0"
B33	2	Ø	8' - 0"
B34	2	Ø	8' - 0"
B35	2	Ø	8' - 0"
B36	2	Ø	8' - 0"
B37	2	Ø	8' - 0"
B38	2	Ø	8' - 0"
B39	2	Ø	8' - 0"
B40	2	Ø	8' - 0"
B41	2	Ø	8' - 0"
B42	2	Ø	8' - 0"
B43	2	Ø	8' - 0"
B44	2	Ø	8' - 0"
B45	2	Ø	8' - 0"
B46	2	Ø	8' - 0"
B47	2	Ø	8' - 0"
B48	2	Ø	8' - 0"
B49	2	Ø	8' - 0"
B50	2	Ø	8' - 0"
B51	2	Ø	8' - 0"
B52	2	Ø	8' - 0"
B53	2	Ø	8' - 0"
B54	2	Ø	8' - 0"
B55	2	Ø	8' - 0"
B56	2	Ø	8' - 0"
B57	2	Ø	8' - 0"
B58	2	Ø	8' - 0"
B59	2	Ø	8' - 0"
B60	2	Ø	8' - 0"
B61	2	Ø	8' - 0"
B62	2	Ø	8' - 0"
B63	2	Ø	8' - 0"
B64	2	Ø	8' - 0"
B65	2	Ø	8' - 0"
B66	2	Ø	8' - 0"
B67	2	Ø	8' - 0"
B68	2	Ø	8' - 0"
B69	2	Ø	8' - 0"
B70	2	Ø	8' - 0"
B71	2	Ø	8' - 0"
B72	2	Ø	8' - 0"
B73	2	Ø	8' - 0"
B74	2	Ø	8' - 0"
B75	2	Ø	8' - 0"
B76	2	Ø	8' - 0"
B77	2	Ø	8' - 0"
B78	2	Ø	8' - 0"
B79	2	Ø	8' - 0"
B80	2	Ø	8' - 0"
B81	2	Ø	8' - 0"
B82	2	Ø	8' - 0"
B83	2	Ø	8' - 0"
B84	2	Ø	8' - 0"
B85	2	Ø	8' - 0"
B86	2	Ø	8' - 0"
B87	2	Ø	8' - 0"
B88	2	Ø	8' - 0"
B89	2	Ø	8' - 0"
B90	2	Ø	8' - 0"
B91	2	Ø	8' - 0"
B92	2	Ø	8' - 0"
B93	2	Ø	8' - 0"
B94	2	Ø	8' - 0"
B95	2	Ø	8' - 0"
B96	2	Ø	8' - 0"
B97	2	Ø	8' - 0"
B98	2	Ø	8' - 0"
B99	2	Ø	8' - 0"
B100	2	Ø	8' - 0"

BILL OF MATERIAL	
Class 'A' Exc.	Cu Yd. 295
Rock Exc. for Structure	Cu Yd. 30
Structural Steel	Lbs. 4210
Class 'X' Concrete	Cu Yd. 912
Reinf. Bars	Lbs. 11070
1/2" Cast Iron Pipe	Lbs. 72
Sluice Gate & Floor Slab	Each

* These Dimensions to be determined by Sluice Gate and Standard L.I.P. Purchased by Contractor.

E.F. denotes Each Face
 N.F. = Near Face
 F.F. = Far Face
 O.F. = Outside Face
 I.F. = Inside Face
 T.O.B. = Top of Bottom

DEPARTMENT OF TRANSPORTATION
 COUNTY OF COOK
 CONGRESS STREET PUMPING STATION
 PLAN & SECTIONS
 DRAWN: P.S.T.
 APPROVED: [Signature]

FOR INFORMATION ONLY

Added Sheet 12/21/2009, LIN

FILE NAME *	DESIGNED - SGL	REVISED 12/21/2009
#FILE#	DRAWN - SGL	REVISED -
USER NAME = #USER#	CHECKED - FML	REVISED -
PLOT DATE = #DATE#	DATE - 12/2009	REVISED -



STATE OF ILLINOIS
 DEPARTMENT OF TRANSPORTATION

SCALE:	SHEET NO. 2 OF 2 SHEETS	STA.	TO STA.
--------	-------------------------	------	---------

PUMP STATION NO. 20
 RECORD DRAWINGS

F.A.I. RTE.	SECTION	COUNTY	TOTAL SHEETS	SHEET NO.
290	(3031), ETC., 3838RS-5	COOK	298	251D
				CONTRACT NO. 60G52

ILLINOIS FED. AID PROJECT