

FOR INDEX OF SHEETS, SEE SHEET NO. 2.

TRAFFIC DATA

ADT = 187,000 VEHICLES
POSTED SPEED LIMIT = 55 MPH

PROJECT LOCATED IN THE
VILLAGE OF OAK PARK,
VILLAGE OF FOREST PARK,
VILLAGE OF MAYWOOD,
VILLAGE OF BROADVIEW,
VILLAGE OF WESTCHESTER,
VILLAGE OF BELLWOOD
AND VILLAGE OF HILLSIDE

STRUCTURE LOCATIONS

I-290 EB OVER I-88
SN 016-0085

I-290 C-D RAMP OVER HILLSIDE DR
SN 016-2759

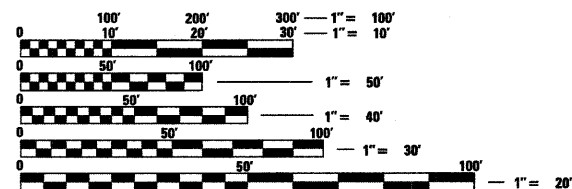
I-290 C-D RAMP OVER WOLF RD
SN 016-2758

I-290 OVER WOLF RD
SN 016-0086

I-290 OVER HILLSIDE DR
SN 016-0986

I-290 OVER ADDISON CREEK
SN 016-0088

I-290 OVER DES PLAINES RIVER
SN 016-0090



FULL SIZE PLANS HAVE BEEN PREPARED USING STANDARD ENGINEERING SCALES. REDUCED SIZED PLANS WILL NOT CONFORM TO STANDARD SCALES. IN MAKING MEASUREMENTS ON REDUCED PLANS, THE ABOVE SCALES MAY BE USED.

J.U.L.I.E.
JOINT UTILITY LOCATION INFORMATION FOR EXCAVATION
1-800-892-0123
OR 811

PROJECT ENGINEER: CRAIG BAUER (847) 705-4265
PROJECT MANAGER: LONG TRAN (847) 705-4232

CONTRACT NO. 60G52

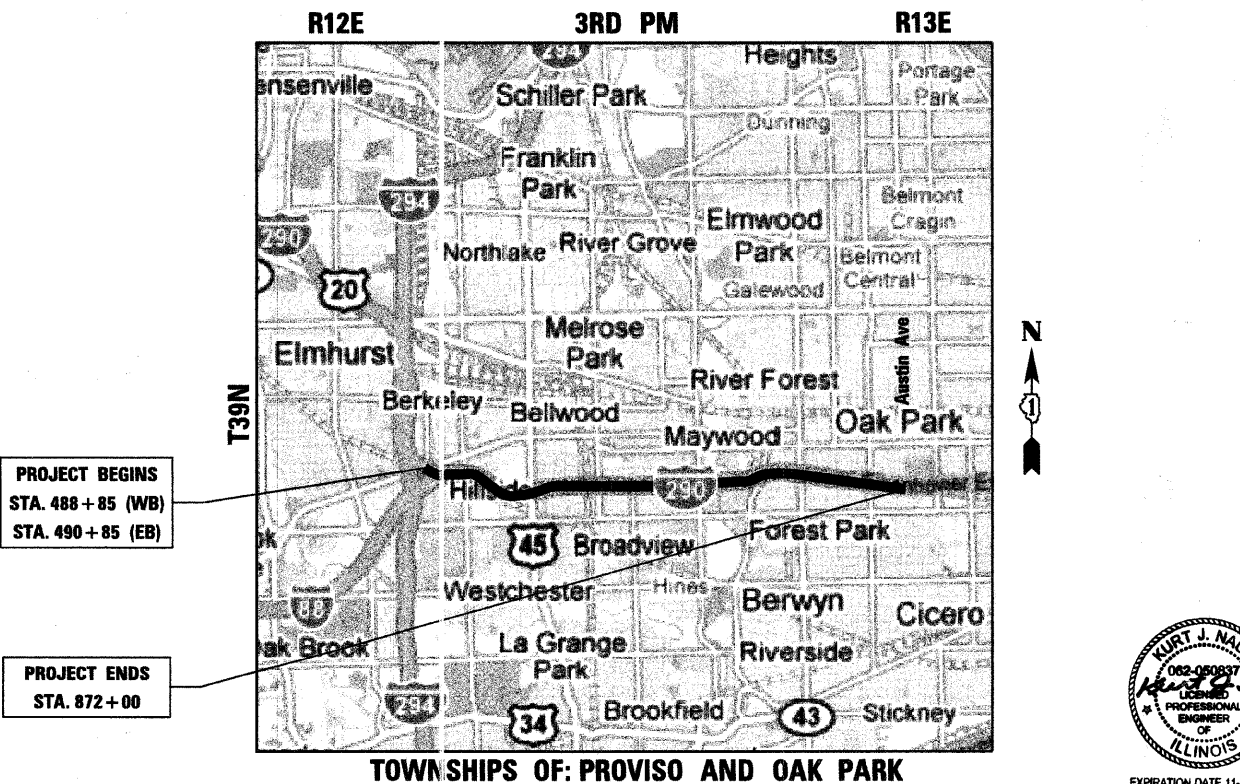
STATE OF ILLINOIS
DEPARTMENT OF TRANSPORTATION
DIVISION OF HIGHWAYS

**PROPOSED
HIGHWAY PLANS**
FAI-290 (EISENHOWER EXPRESSWAY)
SECTION (3031.1, ETC., 3838)RS-5
PROJECT: ACIM-290-4(114)084
I-88 TO AUSTIN AVE.
RESURFACING AND ROADWAY AND STRUCTURE REPAIRS
COOK COUNTY
C-91-493-09

NOTE: WHEREVER IN THESE PLANS
REFERENCE IS MADE TO "TOTAL
SHEETS-298 IT SHALL MEAN 413.

F.A.I. RTE.	SECTION	COUNTY	TOTAL SHEETS	SHEET NO.
290	(3031.1, ETC., 3838)RS-5	COOK	298	1
FED. ROAD DIST. NO.	ILLINOIS	CONTRACT NO.	60G52	

* 424 + 1 = 425
D-91-341-09
* 413 + 5 = 418
* + 6 = 424



PROJECT BEGINS
STA. 488 + 85 (WB)
STA. 490 + 85 (EB)

PROJECT ENDS
STA. 872 + 00

TOWNSHIPS OF: PROVISO AND OAK PARK

LAYOUT MAP

SCALE: 1 IN = 1.5 MI

GROSS LENGTH OF PROJECT = 38,315 LIN FT = 7.26 MILES
NET LENGTH OF PROJECT = 38,315 LIN FT = 7.26 MILES



EXPIRATION DATE 11-30-09
DATE 10/2/09

STATE OF ILLINOIS
DEPARTMENT OF TRANSPORTATION
DIVISION OF HIGHWAYS

SUBMITTED October 7, 2009
Diana M. O'Keefe DEPUTY DIRECTOR OF HIGHWAYS, REGION ENGINEER
December 4, 2009
Charles J. Ingersoll ENGINEER OF DESIGN AND ENVIRONMENT
December 4, 2009
Christina M. Reed DIRECTOR OF HIGHWAYS, CHIEF ENGINEER

**PRINTED BY THE AUTHORITY
OF THE STATE OF ILLINOIS**

benesch alfred benesch & company
Engineers • Surveyors • Planners
205 North Michigan Avenue, Suite 2400
Chicago, Illinois 60601
312-565-0450

Rev. 1-10-10
Rev. 1-4-10

Rev.