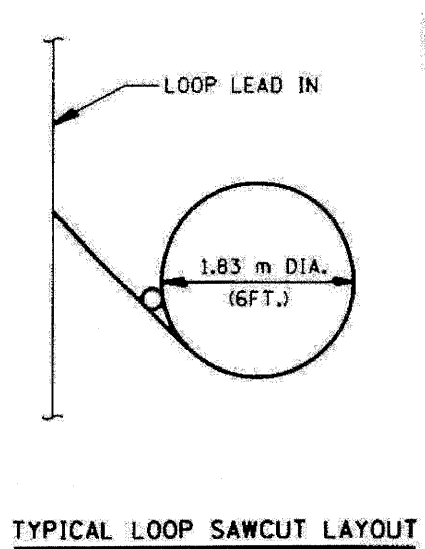
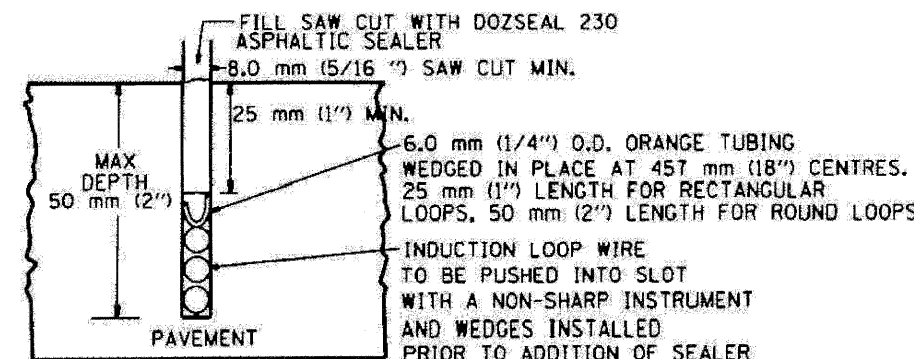
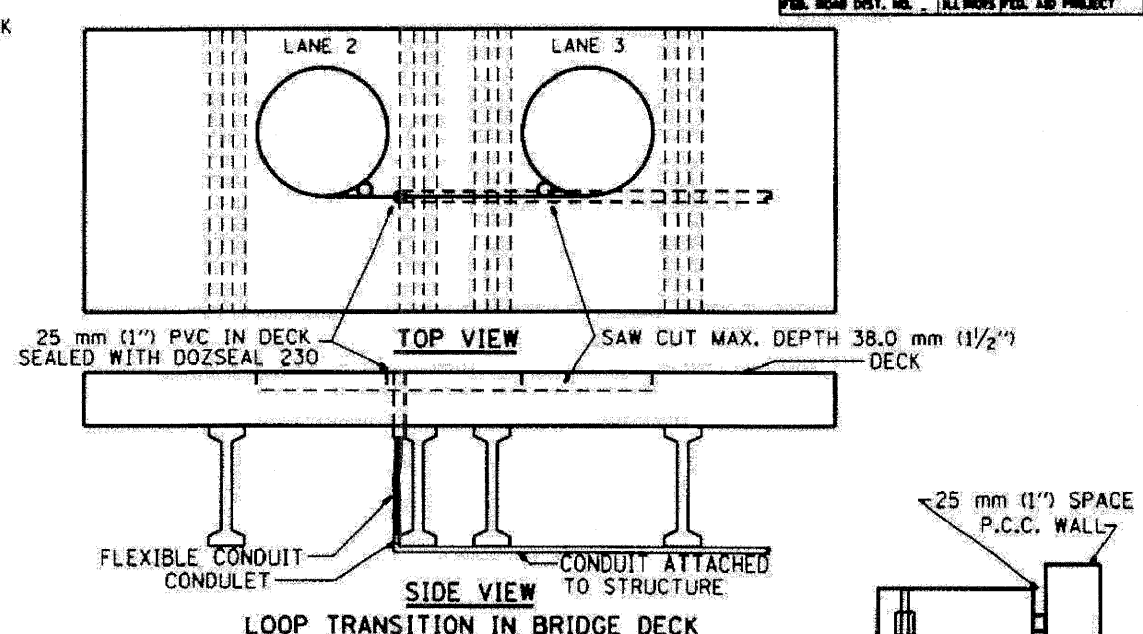
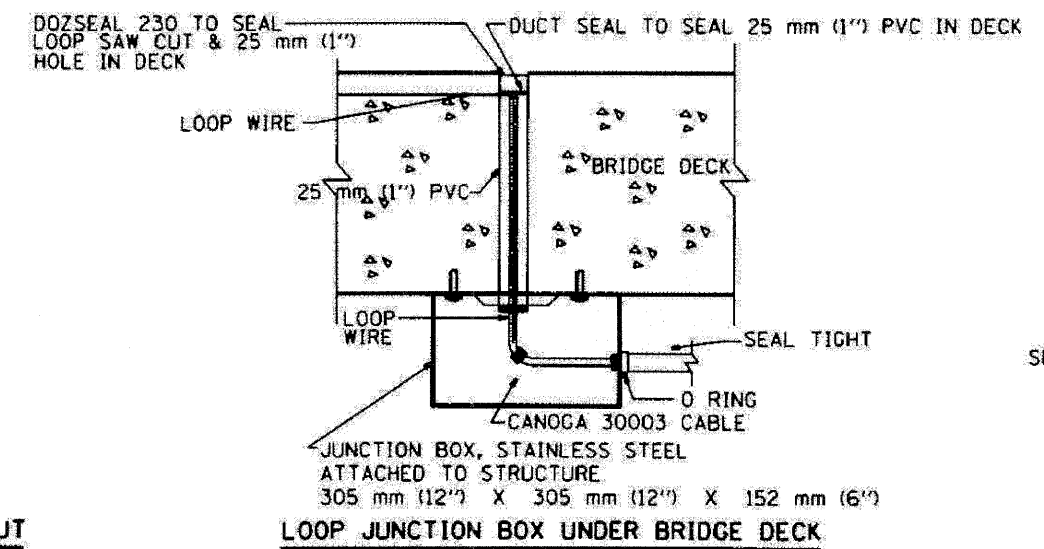


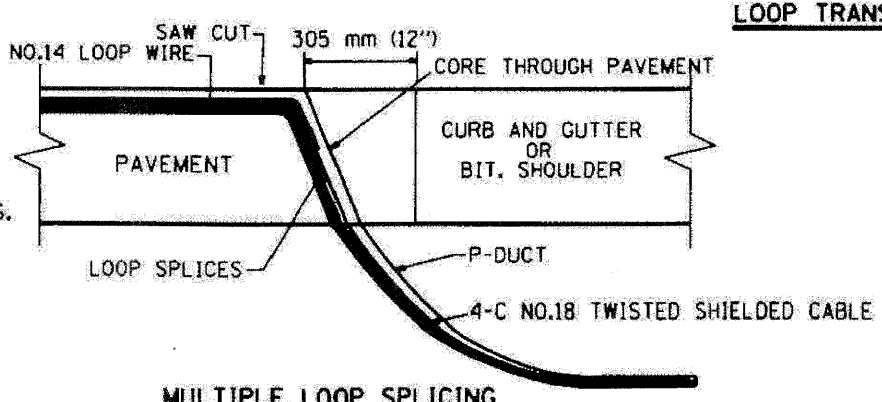
F.A. RTE.	SECTION	COUNTY	TOTAL SHEETS	SHEET NO.
STA.	TO STA.			
FED. ROAD DIST. NO.	ILLINOIS FED. AID PROJECT			



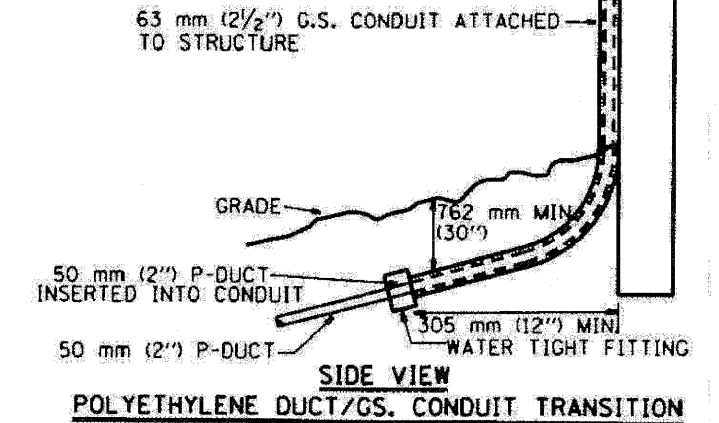
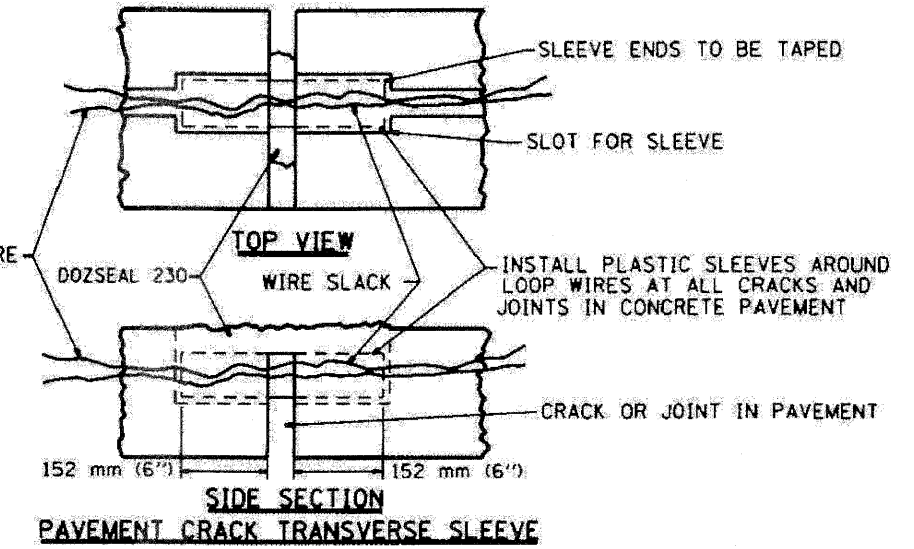
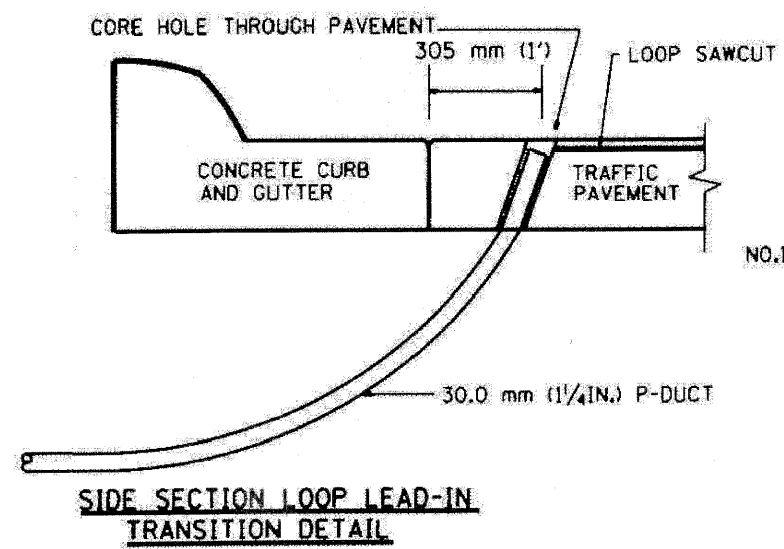
TYPICAL LOOP SAWCUT LAYOUT



LOOP CROSS SECTION IN PAVEMENT



MULTIPLE LOOP SPLICING



REVISIONS		ILLINOIS DEPARTMENT OF TRANSPORTATION TRAFFIC SYSTEMS CENTER
NO.	DATE	
1.	5/78	LOOP, CONDUIT & DUCT INSTALLATION DETAILS SCALE: VERT. NONE HORIZ. NONE DATE 6-22-84 DRAWN BY: G.M. CHECKED BY: R.L.
2.	5/78	
3.	11/78	
4.	02/79	
5.	10/79	

TRAFFIC SYSTEMS CENTER (TY-1TSC-418*4)

FILE NAME =	DESIGNED - GHT	REVISED -
\\prip\in\ARC_C2_TS_DET_12.dgn	DRAWN - TMB	REVISED -
USER NAME = tblank	CHECKED - MPM	REVISED -
PLOT DATE = 11/12/2009	DATE - 10/16/09	REVISED -

benesch

STATE OF ILLINOIS
DEPARTMENT OF TRANSPORTATION

TRAFFIC SYSTEMS CENTER
DETAIL SHEETS

SCALE: N.T.S. SHEET NO. 12 OF 16 SHEETS STA. TO STA.

F.A. RTE.	SECTION	COUNTY	TOTAL SHEETS	SHEET NO.
290	(3031.1, ETC., 3838RS-5	COOK	298	279
FED. ROAD DIST. NO.	ILLINOIS FED. AID PROJECT			
			CONTRACT NO. 60652	