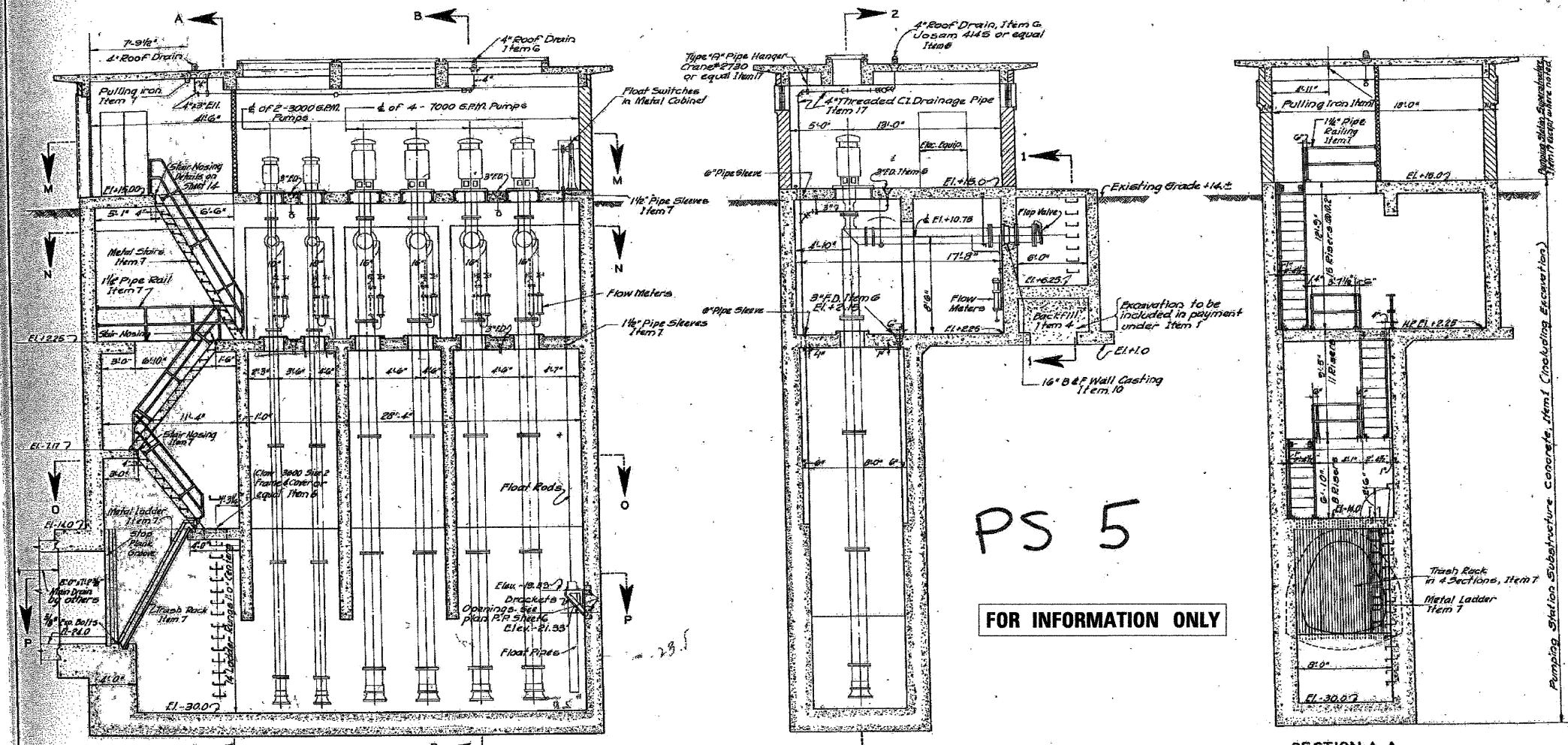
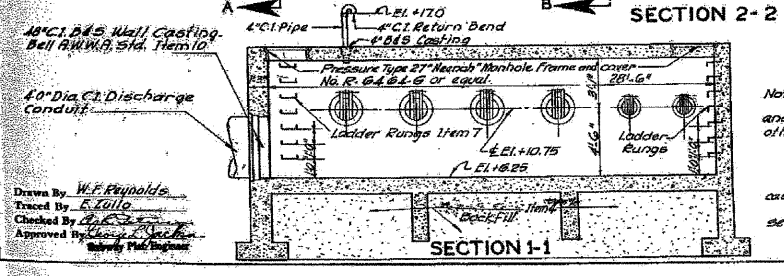


Proj. No.	2424.15-D	COC	32	7
Sheet No.				



PS 5
FOR INFORMATION ONLY



Notes:
 All pumping, electrical and metering equipment and gas heater shown in light lines, to be furnished by others under a future contract.
 For detail drawings of superstructure, see sheets 12, 16, 17 and 18.
 For structural details see sheets 8, 9, 10, 11, 12, 13 and 16.
 For electrical details see sheets 21 and 22.
 For details of metal stairs, pump supports, wall castings, trash rack and ladder, see sheet 14.
 For details of ladder rungs and pulling iron, see sheet 23.
 For general plans M-M, N-N, O-O and R-R see sheet 6.

Scale of Tracing
 1/4" = 1'-0"
 0.75" = 9'-0"

CITY OF CHICAGO
 DEPARTMENT OF SUBWAYS AND SUPERHIGHWAYS
 WEST ROUTE SUPERHIGHWAY
 SECTION 2424.15-D
 PUMPING STATION AND DISCHARGE CONDUIT
 S. DESPLAINES ST. TO S. BRANCH OF CHICAGO RIVER
 PUMPING STATION
 GENERAL SECTIONS
 SCALE: AS NOTED
 SHEET NO. 7
 FEBRUARY 1951
 OF 32 SHEETS

Drawn By: W.F. Reynolds
 Traced By: E. Lillo
 Checked By: J. L. ...
 Approved By: ...

Added Sheet 12/21/2009, LIN

FILE NAME *	DESIGNED - SGL	REVISED 12/21/2009	 LIN ENGINEERING, LTD. Consulting Engineers Channah, Illinois	STATE OF ILLINOIS DEPARTMENT OF TRANSPORTATION	PUMP STATION NO. 5 RECORD DRAWINGS	F.A.I. RTE.	SECTION	COUNTY	TOTAL SHEETS	SHEET NO.
#FILEL#	DRAWN - SGL	REVISED -				290 (28288.D, ETC., 3031.1RS-6)	COOK	185	124A	
USER NAME * #USER#	CHECKED - FML	REVISED -				CONTRACT NO. 60C53				
PLOT DATE * #DATE#	DATE - 12/2009	REVISED -				ILLINOIS FED. AID PROJECT				