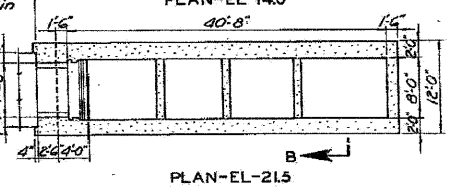
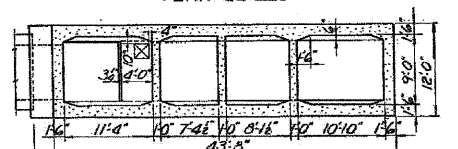
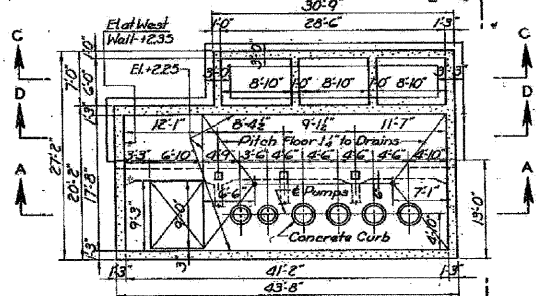
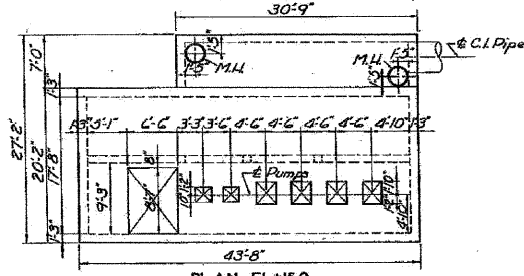
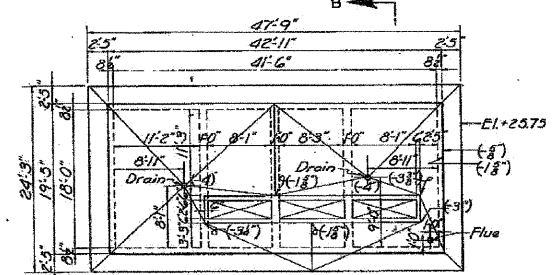
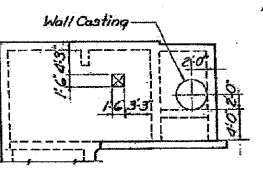
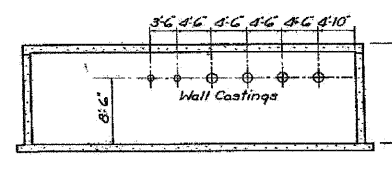
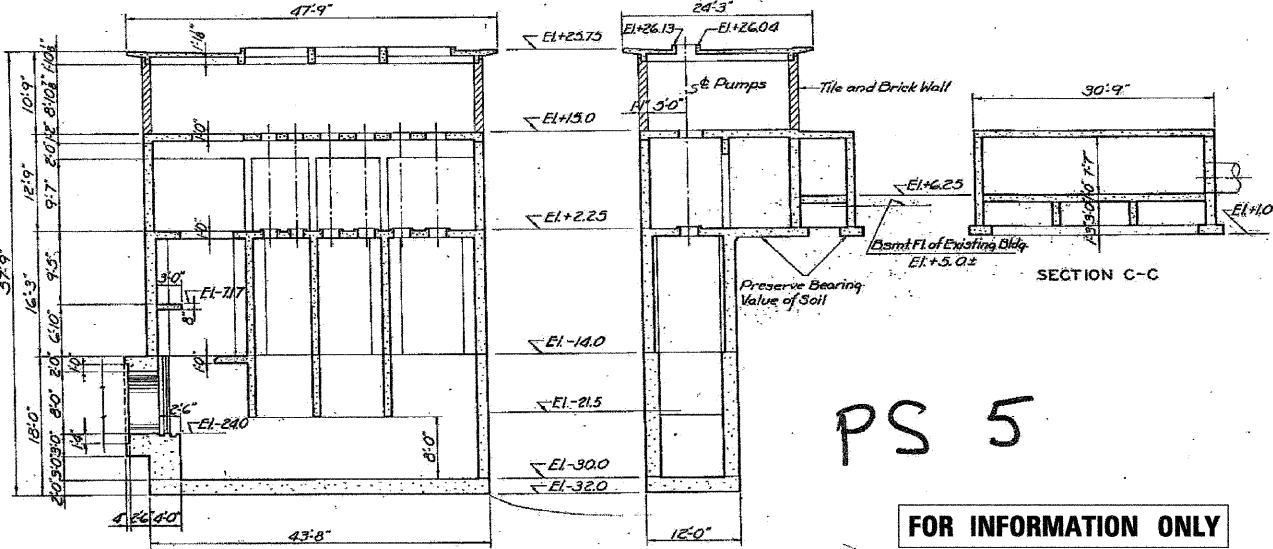


SECTION	COUNTY	TOTAL SHEETS	SHEET NO.
2424.15-D	COOK	185	124B

Figures thus given (-4) on Roof Plan indicate distances below El.+25.75 Bottom of slab is level



Designed By: R. Soliman
 Drawn By: Sol. Genesee
 Traced By: W. Wood
 Checked By: H.E. Wagoner
 Approved By: [Signature]
 Subway Structural Engineer



PS 5
FOR INFORMATION ONLY

- Notes:
- Base Slab and Details
 - North and South Walls
 - East and West Walls
 - Plan of Elev.+2.25
 - Plan of Elev.+13.00
 - Roof Plan
 - Plan and Profile
 - General Details
 - Architectural Details
 - Electrical Details
 - Mechanical Details

- Sheet No. 9
- Sheet No. 10
- Sheet No. 11
- Sheet No. 12
- Sheet No. 13
- Sheet No. 14
- Sheet No. 15
- Sheet No. 16
- Sheet No. 17
- Sheet No. 18
- Sheet No. 19
- Sheet No. 20
- Sheet No. 21
- Sheet No. 22

CITY OF CHICAGO
 DEPARTMENT OF SUBWAYS AND SUPERHIGHWAYS
WEST ROUTE SUPERHIGHWAY
 SECTION 2424.15-D
PUMPING STATION AND DISCHARGE CONDUIT
 S. DESPLAINES ST. TO S. BRANCH OF CHICAGO RIVER
 PUMPING STATION
 PLANS AND SECTIONS
 FEBRUARY 1951
 SCALE: AS NOTED
 SHEET NO. 8 OF 32 SHEETS

Scale of Tracing
 8" = 1'-0"
 0 2 4 6 8 16'

Added Sheet 12/21/2009, LIN

FILE NAME *	DESIGNED - SGL	REVISED 12/21/2009
#FILE#	DRAWN - SGL	REVISED -
USER NAME = #USER#	CHECKED - FML	REVISED -
PLOT DATE = #DATE#	DATE - 12/2009	REVISED -

E LIN ENGINEERING, LTD.
 Consulting Engineers
 Chardon, Black Westmont, Blacks

STATE OF ILLINOIS
 DEPARTMENT OF TRANSPORTATION

PUMP STATION NO. 5	
RECORD DRAWINGS	
SCALE:	TO STA.
SHEET NO. 2 OF 2 SHEETS	

F.A.I. RTE.	SECTION	COUNTY	TOTAL SHEETS	SHEET NO.
290	(2828B.D, ETC., 3031.IRS-6	COOK	185	124B
				CONTRACT NO. 60G53
ILLINOIS FED. AID PROJECT				