

FOR INDEX OF SHEETS, SEE SHEET NO. 2.

TRAFFIC DATA

ADT = 204,600 VEHICLES
POSTED SPEED LIMIT = 55 MPH

PROJECT LOCATED IN THE CITY OF CHICAGO

STATE OF ILLINOIS

DEPARTMENT OF TRANSPORTATION

DIVISION OF HIGHWAYS

**PROPOSED
HIGHWAY PLANS**

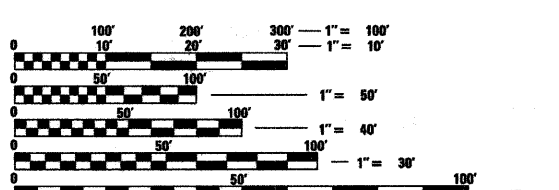
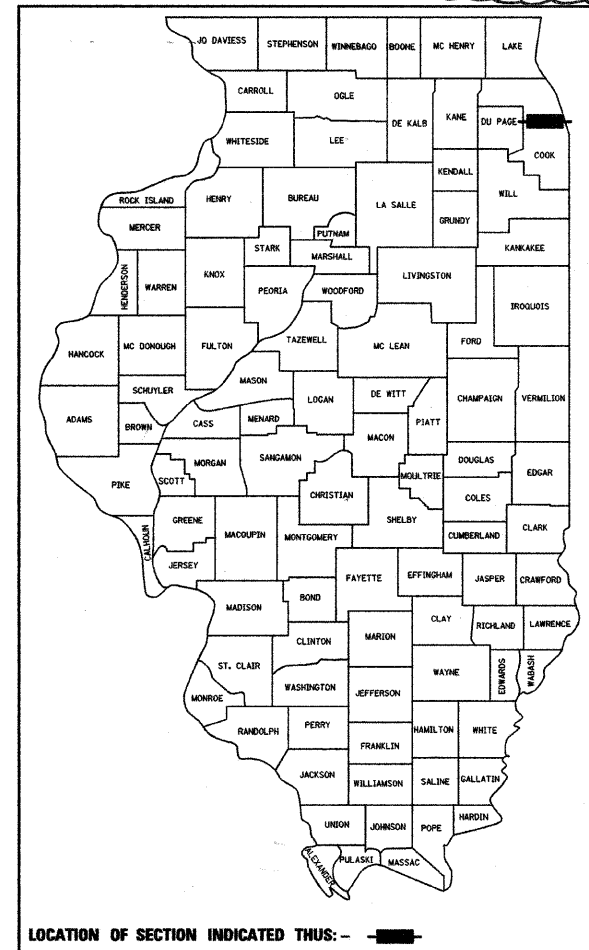
FAI-290 (EISENHOWER EXPRESSWAY)
SECTION (2828 [B, D] ETC., 3031.1)RS-6
PROJECT: ACIM-290-4(113)091

AUSTIN AVE. TO I-90/94
RESURFACING AND ROADWAY AND STRUCTURE REPAIRS
COOK COUNTY
C-91-494-09

NOTE: WHEREVER IN THESE PLANS
REFERENCE IS MADE TO "TOTAL
SHEETS 185" IT SHALL
MEAN 300.

F.A.I. RTE.	SECTION	COUNTY	TOTAL SHEETS	SHEET NO.
290		COOK	300	1
FED. ROAD DIST. NO.	ILLINOIS	CONTRACT NO. 60653		

(2828 B, D, ETC., 3031)RS-6
* 300 + 21 = 321
* + 6 = 327
D-91-341-09

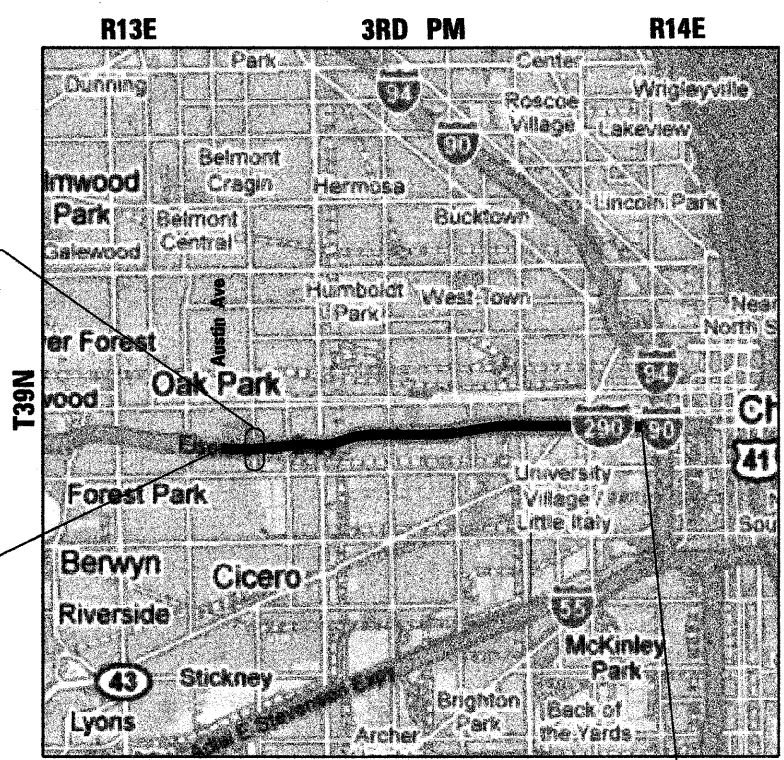


FULL SIZE PLANS HAVE BEEN PREPARED USING STANDARD ENGINEERING SCALES. REDUCED SIZED PLANS WILL NOT CONFORM TO STANDARD SCALES. IN MAKING MEASUREMENTS ON REDUCED PLANS, THE ABOVE SCALES MAY BE USED.

C.U.A.N.
CHICAGO UTILITY AREA NETWORK
1-312-744-7000
OR 811

PROJECT ENGINEER: CRAIG BAUER (847) 705-4265
PROJECT MANAGER: LONG TRAN (847) 705-4232

CONTRACT NO. 60653



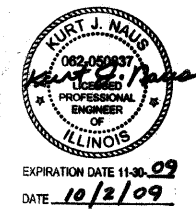
I-290 EB OVER CENTRAL
SN 016-0094
I-290 WB OVER CENTRAL
SN 016-0095

PROJECT BEGINS
STA. 872+00

PROJECT ENDS
STA. 1215+15 (WB)
STA. 1214+90 (EB)

WEST TOWNSHIP
LAYOUT MAP
SCALE: 1 IN = 1.5 MI

GROSS LENGTH OF PROJECT = 34,315 LIN FT = 6.50 MILES
NET LENGTH OF PROJECT = 34,315 LIN FT = 6.50 MILES



STATE OF ILLINOIS
DEPARTMENT OF TRANSPORTATION
DIVISION OF HIGHWAYS

SUBMITTED October 7 2009
Diane M. O'Keefe
DEPUTY DIRECTOR OF HIGHWAYS, REGION ENGINEER

December 4, 2009
Charles J. Ingersoll
ENGINEER OF DESIGN AND ENVIRONMENT

December 4, 2009
Christine M. Reed
DIRECTOR OF HIGHWAYS, CHIEF ENGINEER

PRINTED BY THE AUTHORITY
OF THE STATE OF ILLINOIS

alfred benesch & company
Engineers • Surveyors • Planners
205 North Michigan Avenue, Suite 2400
Chicago, Illinois 60601
312-565-0450

Rev. 1-4-10

INDEX OF SHEETS

SHEET NO.	DESCRIPTION
1	COVER SHEET
2	INDEX OF SHEETS, STANDARDS, GENERAL NOTES & HMA REQUIREMENTS
3-5	SUMMARY OF QUANTITIES
6-12	TYPICAL SECTIONS
*13-15	SCHEDULES OF QUANTITIES
16-48	ALIGNMENTS
49-72	ROADWAY PLANS
73-100	MAINTENANCE OF TRAFFIC
*101-124	PAVEMENT MARKING PLANS
125-140	STRUCTURAL PLANS
141-155	TRAFFIC SURVEILLANCE LOOP PLANS
156-170	TRAFFIC SYSTEM CENTER DETAILS
171-185	DISTRICT 1 DETAILS
186-189	SIGNING SCHEDULES OF QUANTITIES
190-213	SIGNING PLANS
214-292	SIGNING DETAILS
293-300	DISTRICT 1 SIGNING DETAILS

* ADDED 15A, 15B
* ADDED 124A - 124D

GENERAL NOTES:

- BEFORE STARTING WORK THE CONTRACTOR SHALL CALL DIGGER AT (312) 774-7000 FOR WORK WITHIN THE CHICAGO CITY LIMITS OR JULIE AT 811 OR (800) 892-0123 FOR WORK OUTSIDE CHICAGO CITY LIMITS FOR FIELD LOCATIONS OF BURIED UTILITIES. 72 HOUR ADVANCE NOTIFICATION IS REQUIRED.
- THE CONTRACTOR SHALL COORDINATE CONSTRUCTION ACTIVITIES WITH UTILITY COMPANIES AS REQUIRED.
- THE CONTRACTOR SHALL COORDINATE WORK ACTIVITIES WITH ADJACENT CONTRACTS. IDOT CONTRACT NUMBERS ARE 60G52 AND 60D61.
- THE CONTRACTOR WILL NOT BE ALLOWED TO SET UP A YARD OR FIELD OFFICE ON STATE PROPERTY WITHOUT WRITTEN PERMISSION FROM THE DEPARTMENT.
- VERTICAL CLEARANCES OF BRIDGES OVER I-290 SHALL BE MAINTAINED. HMA SURFACE REMOVAL AND PROPOSED HMA SURFACE THICKNESS WILL BE VARIED AS DIRECTED BY THE ENGINEER IF THE EXISTING BITUMINOUS DEPTH IS LESS THAN 2". THE CONTRACTOR SHALL VERIFY ALL BRIDGE CLEARANCES BEFORE AND AFTER CONSTRUCTION AND FURNISH RESULTS TO THE ENGINEER. THIS WORK SHALL BE INCLUDED IN THE LUMP SUM PRICE FOR CONSTRUCTION LAYOUT.
- WHERE ARTIFICIAL LIGHTING IS USED IN NIGHT OPERATIONS, THE CONTRACTOR SHALL EXERCISE THE UTMOST PRECAUTIONS IN PREVENTING ADVERSE VISIBILITY TO THE MOTORING PUBLIC AND ADJOINING RESIDENTIAL AREAS.
- PATCHING, CURB AND GUTTER REMOVAL AND REPLACEMENT, AND CONCRETE BARRIER REMOVAL AND REPLACEMENT LIMITS ARE NOT SHOWN ON THE PLANS. LIMITS OF THIS WORK WILL BE DETERMINED BY THE ENGINEER.
- BUTT JOINTS WILL BE INSTALLED AT THE END OF ALL RESURFACING SECTIONS TO MATCH EXISTING PAVEMENT. SEE DISTRICT DETAIL BD400-05 - BUTT JOINT AND HMA TAPER DETAILS FOR ALL PCC AND HMA BUTT JOINTS.
- CONTACT EXPRESSWAY OPERATIONS AT (847) 705-4151 TWO WEEKS BEFORE INSTALLING FINAL PAVEMENT MARKINGS.

- THE CONTRACTOR SHALL SWEEP AND CLEAN THE PAVEMENT SURFACE, PER ARTICLE 107.15 OF THE STANDARD SPECIFICATIONS AND AS DIRECTED BY THE ENGINEER.
- TEMPORARY EDGE LINES SHOWN IN THE SUGGESTED MAINTENANCE OF TRAFFIC SHALL BE INSTALLED WITHIN 24 HOURS OF MILLING OR BINDER PLACEMENT.
- THE ALIGNMENTS AND SUPPORTING DATA SHOWN IN THE PLANS WAS DEVELOPED FROM PREVIOUS PLANIMETRICS AND AERIAL PHOTOGRAPHY FURNISHED BY THE DEPARTMENT AND IS NOT THE RESULT OF A GROUND SURVEY. THEREFORE, THE ALIGNMENTS AND SUPPORTING DATA SHOWN IN THE PLANS IS FOR REFERENCE PURPOSES ONLY. THE RELATIVE ACCURACY OF THE INFORMATION IS UNKNOWN AND CANNOT BE GUARANTEED. THE CONTRACTOR MAY BE REQUIRED TO ADJUST LAYOUT TO MATCH ACTUAL FIELD CONDITIONS AND THE INTENT OF THE PLANS. ALL ALIGNMENTS ARE BASELINES.
- BEFORE BEGINNING ANY WORK, THE CONTRACTOR SHALL RETAIN AND RECORD (FOR FUTURE REFERENCES), ALL EXISTING PAVEMENT MARKING LINES IN ORDER THAT THESE LOCATIONS CAN BE RE-ESTABLISHED FOR STRIPING. EXACT LOCATIONS OF ALL STRIPING SHALL BE AS DIRECTED BY THE ENGINEER.
- DRAINAGE ADJUSTMENT, CLEANING OR RECONSTRUCTION LOCATIONS WILL BE DETERMINED IN THE FIELD BY THE ENGINEER.
- EXISTING BROKEN FRAMES AND LIDS SHALL BE REMOVED AND DISPOSED OF BY THE CONTRACTOR AND SHALL BE REPLACED AS DIRECTED BY THE ENGINEER. REPLACEMENT FRAMES AND LIDS WILL BE PAID FOR IN ACCORDANCE WITH ARTICLE 109.04 OF THE STANDARD SPECIFICATIONS UNLESS A SEPARATE PAY ITEM HAS BEEN PROVIDED.
- VERTICAL BARRICADES WILL REMAIN IN PLACE ALONG THE EDGES OF PAVEMENT AS SHOWN IN THE SUGGESTED MAINTENANCE OF TRAFFIC PLANS UNTIL THE SURFACE COURSE AND PROPOSED PAVEMENT MARKING EDGE LINES HAVE BEEN COMPLETED.
- DISPOSAL OF THE SHOULDER CUTTING AND CLEAN SWEEPING OF THE SHOULDERS SHALL BE COMPLETED PRIOR TO THE OPENING OF THE SHOULDERS AND TRAFFIC. DISPOSAL AND SWEEPING SHALL BE INCLUDED IN THE COST OF "SHOULDER RUMBLE STRIPS".
- EXISTING PAVEMENT MARKINGS THAT CONFLICT WITH REVISED TRAFFIC PATTERNS SHALL BE REMOVED AS DIRECTED BY THE ENGINEER. THIS WORK WILL BE PAID FOR AT THE CONTRACT UNIT PRICE PER SQUARE FOOT FOR PAVEMENT MARKING REMOVAL.

IDOT STANDARDS

STANDARD NO.	DESCRIPTION
000001-05	STANDARD SYMBOLS, ABBREVIATIONS AND PATTERNS
420001-07	PAVEMENT JOINTS
420401-08	BRIDGE APPROACH PAVEMENT CONNECTOR
421001-02	BAR REINFORCEMENT FOR CRC PAVEMENT
442001-04	CLASS A PATCHES
442201-03	CLASS C AND D PATCHES
515001-03	NAME PLATE FOR BRIDGES
606001-04	COMBINATION CURB TYPE B AND COMBINATION CONCRETE CURB & GUTTER
630001-08	STEEL PLATE BEAM GUARDRAIL
631006-07	TRAFFIC BARRIER TERMINAL, TYPE 1B
631026-05	TRAFFIC BARRIER TERMINAL, TYPE 5
635006-03	REFLECTOR AND TERMINAL MARKER PLACEMENT
635011-02	REFLECTOR MARKER AND MOUNTING DETAILS
637001-04	CONCRETE BARRIER, DOUBLE FACE, 815mm (32 IN) HEIGHT
637006-02	CONCRETE BARRIER, DOUBLE FACE, 1065mm (42 IN) HEIGHT
642001-01	SHOULDER RUMBLE STRIPS
701101-02	OFF-RD OPERATIONS, MULTILANE, 15' (4.5 m) TO 24" (600mm) FROM PAVEMENT EDGE
701106-02	OFF-RD OPERATIONS, MULTILANE, MORE THAN 15' (4.5m) AWAY
701400-04	APPROACH TO LANE CLOSURE, FREEWAY/EXPRESSWAY
701401-05	LANE CLOSURE, FREEWAY/EXPRESSWAY
701406-05	LANE CLOSURE, FREEWAY/EXPRESSWAY, DAY OPERATIONS ONLY
701411-06	LANE CLOSURE, MULTILANE, AT ENTRANCE OR EXIT RAMP, FOR SPEEDS ≥ 45 MPH
701421-02	LANE CLOSURE, MULTILANE, DAY OPERATIONS ONLY FOR SPEEDS ≥ 45 MPH
701422-02	LANE CLOSURE, MULTILANE, FOR SPEEDS ≥ 45 MPH TO 55 MPH
701426-03	LANE CLOSURE, MULTILANE, INTERMITTENT OR MOVING OPERATIONS, FOR SPEEDS ≥ 45 MPH
701446-01	TWO LANE CLOSURE FREEWAY/EXPRESSWAY
701901-01	TRAFFIC CONTROL DEVICES
704001-06	TEMPORARY CONCRETE BARRIER
720001-01	SIGN PANEL MOUNTING DETAILS
720006-02	SIGN PANEL ERECTION DETAILS
720011-01	METAL POST FOR SIGNS MARKERS & DELINEATORS
720021-02	SIGN PANEL EXTRUDED ALUMINUM TYPE
780001-02	TYPICAL PAVEMENT MARKINGS
781001-03	TYPICAL APPLICATIONS RAISED REFLECTIVE PAVEMENT MARKERS

DISTRICT 1 DETAILS

DETAIL	DESCRIPTION
BD600-03 (BD-8)	DETAILS FOR FRAMES AND LIDS ADJUSTMENT WITH MILLING
BD400-04 (BD-22)	PAVEMENT PATCHING FOR HMA SURFACED PAVEMENT
BD400-05 (BD-32)	BUTT JOINT AND HMA TAPER DETAILS
BD400-06 (BD-33)	HMA TAPER AT EDGE OF P.C.C. PAVEMENT
BE-600	ELECTRIC CONNECTION TO SIGN STRUCTURE SPAN TYPE
BE-601	ELECTRIC CONNECTION TO SIGN STRUCTURE CANTILEVER TYPE
BM-21	REMOVE AND REERECT STEEL PLATE BEAM GUARDRAIL
TC-8	FREEWAY ENTRANCE AND EXIT RAMP CLOSURE DETAILS
TC-9	TRAFFIC CONTROL DETAILS FOR FREEWAY SINGLE & MULTI-LANE WEAVE
TC-12	MULTI-LANE FREEWAY PAVEMENT MARKING DETAILS
TC-17	TRAFFIC CONTROL DETAILS FOR FREEWAY SHOULDER CLOSURES
TC-18	PARTIAL RAMP CLOSURES
TC-25	SIGNING FOR FLAGGING OPERATIONS AT WORK ZONE OPENINGS
	TRAFFIC CONTROL DETAILS FOR FREEWAY CENTER LANE CLOSURE SHOULDER LANE
TC-27	MILE POST MARKERS-GORE SIGNS-MAJOR GUIDE SIGN LAYOUT-ARROWS

HOT-MIX ASPHALT REQUIREMENTS

MIXTURE TYPE	THICKNESS	VOIDS
MAINLINE RESURFACING		
POLYMERIZED HOT-MIX ASPHALT SURFACE COURSE, STONE MATRIX ASPHALT, N80	2"	3.5% @ 80 Gyr
POLYMERIZED HOT-MIX ASPHALT BINDER COURSE, STONE MATRIX ASPHALT, N80	2"	3.5% @ 80 Gyr
MAINLINE OUTSIDE SHOULDERS AND INSIDE SHOULDERS > 8'		
HOT-MIX ASPHALT SURFACE COURSE, MIX "D", N70	1-1/2"	4% @ 70 Gyr
HOT-MIX ASPHALT BINDER COURSE, IL-19.0 N70	2-1/4"	4% @ 70 Gyr
RAMPS AND SHOULDERS		
HOT-MIX ASPHALT SURFACE COURSE, MIX "D", N70	1 1/2"	4% @ 70 Gyr
HOT-MIX ASPHALT BINDER COURSE, IL-19.0 N70	2-1/4"	4% @ 70 Gyr
PATCHING		
CLASS D PATCHES OF TYPE AND THICKNESS SPECIFIED (HMA BINDER IL-25mm)	10"	4% @ 105 Gyr
HOT-MIX ASPHALT REPLACEMENT OVER PATCHES (HMA BINDER IL-25mm)	3 1/4", 5 1/2" OR 5 3/4"	4% @ 105 Gyr
STABILIZED SUBBASE HOT-MIX ASPHALT, "A"	4"	2% @ 30 Gyr

UNIT WEIGHT USED TO CALCULATE ALL HOT-MIX ASPHALT SMA SURFACE COURSE IS 135 LBS/SQ YD/IN.
UNITS WEIGHT USED TO CALCULATE ALL OTHER HOT-MIX ASPHALT MIXTURES IS 112 LBS/SQ YD/IN.

THE "AC TYPE" FOR POLYMERIZED HMA MIXES SHALL BE "SBS/SBR PG 70-22" AND FOR NON-POLYMERIZED HMA THE "AC TYPE" SHALL BE "PG 64-22" UNLESS MODIFIED BY DISTRICT ONE SPECIAL PROVISIONS. FOR "PERCENT OF RAP" SEE DISTRICT ONE SPECIAL PROVISIONS.

Rev. 1-4-10

FILE NAME =	DESIGNED - AJP	REVISED -	benesch	STATE OF ILLINOIS DEPARTMENT OF TRANSPORTATION	INDEX OF SHEETS, STANDARDS GENERAL NOTES & HMA REQUIREMENTS	F.A.I. RTE.	SECTION	COUNTY	TOTAL SHEETS	SHEET NO.
#FILEL#	DRAWN - TMB	REVISED -				290	(2828B,D, ETC., 3031.1RS-6	COOK	185	2
USER NAME = #USER#	CHECKED - JMM	REVISED -				CONTRACT NO. 60G53				
PLOT DATE = #DATE#	DATE - 10/16/09	REVISED -				SCALE: N.T.S.	SHEET NO. 1 OF 1 SHEETS	STA. TO STA.	FED. ROAD DIST. NO.	ILLINOIS/FED. AID PROJECT

SPECIALTY ITEM	CODE NUMBER	ITEM	UNIT	TOTAL QUANTITY	CONSTRUCTION TYPE CODE		FUNDING				
					1000-2A	X271-2A	ROADWAY	BRIDGE			
							90% FED 10% STATE	90% FED 10% STATE			
								URBAN	90% FED 10% STATE	90% FED 10% STATE	BRIDGE SN 016-0094 SN 016-0095
**	28000510	INLET FILTERS	EACH	680	680						
	20100110	TREE REMOVAL (6 TO 15 UNITS DIAMETER)	UNIT	1240	1240						
	40600200	BITUMINOUS MATERIALS (PRIME COAT)	TON	369	369						
	40600300	AGGREGATE (PRIME COAT)	TON	1047	1047						
	40600400	MIXTURE FOR CRACKS, JOINTS, AND FLANGEWAYS	TON	692	692						
**	20100210	TREE REMOVAL (OVER 15 UNITS DIAMETER)	UNIT	371	371						
	40600895	CONSTRUCTING TEST STRIP	EACH	2	2						
**	20101300	TREE PRUNING (1 TO 10 INCH DIAMETER)	EACH	9	9						
	40600982	HOT-MIX ASPHALT SURFACE REMOVAL - BUTT JOINT	SQ YD	3,500	3,500						
**	20101350	TREE PRUNING (OVER 10 INCH DIAMETER)	EACH	6	6						
	40601005	HOT-MIX ASPHALT REPLACEMENT OVER PATCHES	TON	10,690	10,690						
	40603065	HOT-MIX ASPHALT BINDER COURSE, IL-19.0, N70	TON	20,777	20,777						
**	40600052	INCIDENTAL HOT-MIX ASPHALT SURFACING (SPECIAL)	TON	857	857						
	40603340	HOT-MIX ASPHALT SURFACE COURSE, MIX "D", N70	TON	13,851	13,851						
	42001200	PAVEMENT FABRIC	-SQ YD-	-850-	-850-						
	42001300	PROTECTIVE COAT	SQ YD	1,018	1,018						
	42001420	BRIDGE APPROACH PAVEMENT CONNECTOR (PCC)	SQ YD	187	187						
	42100925	PAVEMENT REINFORCEMENT 11 1/4"	SQ YD	187	187						
	44000162	HOT-MIX ASPHALT SURFACE REMOVAL, 3 1/4"	SQ YD	39,000	39,000						
	44000164	HOT-MIX ASPHALT SURFACE REMOVAL, 3 3/4"	SQ YD	125,896	125,896						
**	44004260	PAVED SHOULDER REMOVAL (SPECIAL)	SQ YD	3,825	3,825						
	44000165	HOT-MIX ASPHALT SURFACE REMOVAL, 4"	SQ YD	296,736	296,736						
**	40600100	BITUMINOUS MATERIALS (PRIME COAT)	GALLON	2,489	2,489						
	44000500	COMBINATION CURB AND GUTTER REMOVAL	FOOT	4,189	4,189						
**	44000500	STABILIZED SUBBASE HOT-MIX ASPHALT, 11"	SQ YD	3,825	3,825						
	44001700	COMBINATION CONCRETE CURB AND GUTTER REMOVAL AND REPLACEMENT	FOOT	143	143						
	44002213	HOT-MIX ASPHALT REMOVAL OVER PATCHES, 3 1/4"	SQ YD	4,064	4,064						
	44002222	HOT-MIX ASPHALT REMOVAL OVER PATCHES, 5 1/2"	SQ YD	31,053	31,053						
	44004850	PAVED SHOULDER REMOVAL	SQ YD	100	100						
	44002223	HOT-MIX ASPHALT REMOVAL OVER PATCHES, 5 3/4"	SQ YD	1,198	1,198						
	44200561	CLASS A PATCHES, TYPE I, 11 INCH	SQ YD	352	352						
	44200563	CLASS A PATCHES, TYPE II, 10 INCH	-SQ YD-	-110-	-110-						
	44200565	CLASS A PATCHES, TYPE II, 11 INCH	SQ YD	278	278						
	44200567	CLASS A PATCHES, TYPE III, 10 INCH	-SQ YD-	-44-	-44-						
	44200569	CLASS A PATCHES, TYPE III, 11 INCH	SQ YD	44	44						
	44200569	CLASS A PATCHES, TYPE IV, 10 INCH	-SQ YD-	-696-	-696-						
	44200571	CLASS A PATCHES, TYPE IV, 11 INCH	SQ YD	696	696						
	44201761	CLASS D PATCHES, TYPE I, 10 INCH	SQ YD	458	458						
	44201765	CLASS D PATCHES, TYPE II, 10 INCH	SQ YD	17,703	17,703						
	44201769	CLASS D PATCHES, TYPE III, 10 INCH	SQ YD	4,176	4,176						
	44201771	CLASS D PATCHES, TYPE IV, 10 INCH	SQ YD	12,106	12,106						
	44213000	PATCHING REINFORCEMENT	SQ YD	1,528	1,528						
	44213200	SAW CUTS	FOOT	1,099	1,099						
**	46300100	PORTLAND CEMENT CONCRETE SHOULDERS 6"	SQ YD	100	100						
	44300906	STRIP REFLECTIVE CRACK CONTROL TREATMENT SYSTEM A	FOOT	-405,612-	-405,612-						
	46203037	HOT-MIX ASPHALT SHOULDER, 10"	-SQ YD-	-6,561-	-6,561-						
	50102400	CONCRETE REMOVAL	CU YD	47.0							47.0
	50157300	PROTECTIVE SHIELD	SQ YD	191							191
	50300255	CONCRETE SUPERSTRUCTURE	CU YD	47.0							47.0
	50800205	REINFORCEMENT BARS, EPOXY COATED	POUND	4,860							4,860
	50800515	BAR SPLICERS	EACH	44							44
	52000110	PREFORMED JOINT STRIP SEAL	FOOT	288							288

** FOR LOCATIONS AND EXTENT OF WORK NOT SHOWN IN THE PLANS, THE CONTRACTOR SHALL COORDINATE WITH THE ENGINEER AND CONTACT RICK WANNER, ROADSIDE DEVELOPMENT ARCHITECT, IDOT ROADSIDE DEVELOPMENT UNIT AT (847)705-4172 AT LEAST 72 HOURS PRIOR TO STARTING WORK.

Rev. 1-4-10

Rev.

SPECIALTY ITEM	CODE NUMBER	ITEM	UNIT	TOTAL QUANTITY	ROADWAY		Y032-IF	BRIDGE
					90% FED	10% STATE	SURVEILLANCE	SN 016-0094
					10% STATE	90% FED	10% STATE	SN 016-0095
					CONSTRUCTION TYPE CODE			
					1000-2A			X271-2A
	78200100	MONODIRECTIONAL PRISMATIC BARRIER REFLECTOR	EACH	224	224			
	X0326850	MAIN DRAIN JOINT REPAIR	FOOT	285	285			
	78200410	GUARDRAIL MARKERS, TYPE A	EACH	12	12			
*	78200450	MONODIRECTIONAL GUARD RAIL REFLECTORS	EACH	300	300			
	78300100	PAVEMENT MARKING REMOVAL	SQ FT	17,545	17,545			
*	78200530	BARRIER WALL MARKERS, TYPE C	EACH	192	192			
	78300200	RAISED REFLECTIVE PAVEMENT MARKER REMOVAL	EACH	5,472	5,472			
	X0326849	CLEANING OF WET PIT	TON	1,090	1,090			
	81900200	TRENCH AND BACKFILL FOR ELECTRICAL WORK	FOOT	100			100	
	XX005656	INLET FILTER CLEANING	EACH	680	680			
	X0322566	TEMPORARY INFORMATION SIGNING	SQ FT	94	94			
	X0325305	STRUCTURAL REPAIR OF CONCRETE (DEPTH EQUAL TO OR LESS THAN 5 INCHES)	SQ FT	120	120			
	X0322729	MATERIAL TRANSFER DEVICE	TON	73,294	73,294			
	X0325303	STRUCTURAL REPAIR OF CONCRETE (DEPTH GREATER THAN 5 INCHES)	SQ FT	256	256			
	X0323357	CONCRETE BARRIER REMOVAL AND REPLACEMENT	FOOT	288	288			
	X0325093	MAIN DRAIN CLEANING	FOOT	27,391	27,391			
	X0324665	TEST STRIP (STONE MATRIX ASPHALT)	EACH	2	2			
**	X0322859	WEED CONTROL, PRE-EMERGENT GRANULAR HERBICIDE	POUND	300	300			
	X0325702	NIGHTTIME WORK ZONE LIGHTING	L SUM	1	1			
**	X2010300	TREE REMOVAL (UNDER 6 UNITS DIAMETER)	UNIT	108	108			
	X0325775	WET REFLECTIVE TEMPORARY TAPE, TYPE III, 4 INCH	FOOT	71,013	71,013			
	X0325840	WET REFLECTIVE TEMPORARY TAPE, TYPE III, 12 INCH	FOOT	3,406	3,406			
	X0325842	WET REFLECTIVE TEMPORARY TAPE, TYPE III, LETTERS AND SYMBOLS	SQ FT	145	145			
**	Z004800	SELECTIVE CLEARING	UNIT	1200	1200			
	X0325864	BRIDGE APPROACH PAVEMENT REMOVAL	SQ YD	187	187			
**	X0326222	WEED CONTROL, BASAL TREATMENT	GALLON	15	15			
	X0325876	WET REFLECTIVE TEMPORARY TAPE TYPE III, 8 INCH	FOOT	33,727	33,727			
**	X0325921	PLANT CARE	SQ YD	7,495	7,495			
	X0328107	WET REFLECTIVE TEMPORARY TAPE, TYPE III, 5 INCH	FOOT	21,777	21,777			
**	X0322850	WEED CONTROL, NON-SELECTIVE AND NON-RESIDUAL	GALLON	5	5			
	X4066580	POLYMERIZED HOT-MIX ASPHALT SURFACE COURSE, STONE MATRIX ASPHALT, N80	TON	40,059	40,059			
**	X0036120	MULCH PLACEMENT 4"	SQ YD	5882	5882			
	X4066685	POLYMERIZED HOT-MIX ASPHALT BINDER COURSE, STONE MATRIX ASPHALT, N80	TON	33,234	33,234			
**	X1003660	MOWING CYCLES	EACH	2	2			
	X7011015	TRAFFIC CONTROL AND PROTECTION (EXPRESSWAYS)	L SUM	1	1			
**	X0326701	WEED CONTROL, BROADLEAF IN TURF (48 ACRES PER POUND)	POUND	1	1			
	X7013820	TRAFFIC CONTROL SURVEILLANCE, EXPRESSWAYS	CAL DA	65	65			
**	XE186500	ASPHALTIC EMULSION SLURRY SEAL	SQ YD	38,150	38,150			
	X8730312	ELECTRIC CABLE IN CONDUIT, LEAD-IN, NO. 18 4/C, TWISTED, SHIELDED	FOOT	12,962			12,962	
**	X0325223	FIBER ASPHALT	POUND	1,272	1,272			
	X8850102	INDUCTION LOOP	FOOT	5,795			5,795	
**	X0326843	STAINING EXISTING COLORED CONCRETE SURFACES	SQ FT	2,600	2,600			
	Z0001800	APPROACH SLAB REPAIR (PARTIAL DEPTH)	SQ YD	33.9				33.9
**	A2012122	TREE, AESCULUS AUTUMN SPLENDOR (AUTUMN SPLENDOR BUCKEYE), 1 3/4" CALIPER, BALLED AND BURLAPPED, MATURING LEAVES	EACH	25	25			
	Z0013798	CONSTRUCTION LAYOUT	L SUM	1	1			
**	A2002614	TREE, CARYA CORDIFORMIS (BITTERNUT HICKORY), 1 3/4" CALIPER, BALLED AND BURLAPPED	EACH	20	20			
	Z0016001	DECK SLAB REPAIR (FULL DEPTH, TYPE I)	SQ YD	10.0				10.0
**	A2002914	TREE, CELTIS OCCIDENTALIS (COMMON HACKBERRY), 1 3/4" CALIPER, BALLED AND BURLAPPED	EACH	25	25			
	Z0018002	DECK SLAB REPAIR (FULL DEPTH, TYPE II)	SQ YD	28.3				28.3
**	A2005014	TREE, GYMNOCLADUS DIDICUS (KENTUCKY COFFEE TREE), 1 3/4" CALIPER, BALLED AND BURLAPPED	EACH	45	45			
	Z0016200	DECK SLAB REPAIR (PARTIAL)	SQ YD	145.0				145.0
**	A2006514	TREE, QUERCUS BICOLOR (SWAMP WHITE OAK), 1 3/4" CALIPER, BALLED AND BURLAPPED	EACH	30	30			
	Z0018500	DRAINAGE STRUCTURES TO BE CLEANED	EACH	680	680			
**	B2001664	TREE, CRATAEGUS CRUGALI INERMIS (THORNLESS COCKSPUR HAWTHORNE), 5' TIGHT, SHRUB FORM, BALLED	EACH	30	30			
	Z0018800	DRAINAGE STRUCTURES TO BE RECONSTRUCTED	EACH	20	20			
**	B2006116	TREE, SYRINGA PEKINENSIS MORTON (CHINA SNOW PEARL), 2" CALIPER, BALLED AND BURLAPPED	EACH	25	25			
	Z0030250	IMPACT ATTENUATORS, TEMPORARY (NON-REDIRECTIVE), TEST LEVEL 3	EACH	2	2			
	Z0030350	IMPACT ATTENUATORS, RELOCATE (NON-REDIRECTIVE), TEST LEVEL 3	EACH	2	2			
	Z0048665	RAILROAD PROTECTIVE LIABILITY INSURANCE	L SUM	1	1			
	Z0070600	TRAINEES	FOOT	1,000	1,000			
	X0326768	CONDUIT IN TRENCH, HIGH DENSITY POLYETHYLENE, COILABLE	FOOT	100			100	
	Z0075310	TIE BARS 3/4"	EACH	195	195			
	X0326765	CLEANING AND PAINTING EXPOSED REBAR (SPECIAL)	SQ FT	192				192
	X0326818	CONCRETE BARRIER REMOVAL AND REPLACEMENT SINGLE FACE	FOOT	235	235			
	X0326766	CLEAN & RESEAL RELIEF JOINT	FOOT	168.0				168.0
	X0326819	CONCRETE BARRIER REMOVAL AND REPLACEMENT DOUBLE FACE	FOOT	60	60			
	X0326767	PROFILE DIAMOND GRINDING CONCRETE PAVEMENT	SQ YD	69,625	69,625			

** FOR LOCATIONS AND EXTENT OF WORK NOT SHOWN IN THE PLANS, THE CONTRACTOR SHALL COORDINATE WITH THE ENGINEER AND CONTACT RICK WANNER, ROADSIDE DEVELOPMENT ARCHITECT, 1007 ROADSIDE DEVELOPMENT UNIT AT (847) 705-4172 AT LEAST 72 HOURS PRIOR TO STARTING WORK.

© 2000
* Specialty Items
Δ Non-participating

CONTRACT 60G53
BARRIER, GUARD RAIL, & CURB SCHEDULE

LOCATION				STEEL PLATE BEAM GUARDRAIL REMOVAL	STEEL PLATE BEAM GUARDRAIL, TYPE A, 6 FOOT POSTS	STEEL PLATE BEAM GUARDRAIL, TYPE B	TRAFFIC BARRIER TERMINAL, TYPE 5	TRAFFIC BARRIER TERMINAL, TYPE 1B	CONCRETE BARRIER REMOVAL AND REPLACEMENT, SINGLE FACE	CONCRETE BARRIER REMOVAL AND REPLACEMENT, DOUBLE FACE	COMBINATION CURB AND GUTTER REMOVAL	COMBINATION CONCRETE CURB AND GUTTER REMOVAL AND REPLACEMENT	COMBINATION CONCRETE CURB AND GUTTER, TYPE B-6.12	COMBINATION CONCRETE CURB AND GUTTER, TYPE B-6.24
ALIGNMENT	DIRECTION	SIDE	STARTING STATION	(FOOT)	(FOOT)	(FOOT)	(EACH)	(EACH)	(FOOT)	(FOOT)	(FOOT)	(FOOT)	(FOOT)	(FOOT)
Central Ramp	EB	L									1,630		1,630	
Central Ramp	EB	R									1,630		1,630	
290 Exit Ramp to Central	EB	R	Attach to edge of existing barrier wall		250		1	1						
290 RAMP	WB	L	947+90									10		
290 RAMP	WB	L	939+50								100		100	
290 RAMP	WB	R	977+00									5		
290 RAMP	WB	R	977+70									10		
290 RAMP	WB	R	1041+90									10		
290 RAMP	WB	L	1062+50									10		
290 RAMP	WB	R	1062+50								30		30	
290 RAMP	WB	R	1062+80								30		30	
290 RAMP	WB	R	1063+00									10		
290 RAMP	WB	L	1082+00								15		15	
290 RAMP	WB	L	1085+30									5		
290 RAMP	EB	L	1083+50								146		146	
290 RAMP	WB	R	1097+00								15		15	
290 RAMP	WB	R	1098+50								50		50	
290 RAMP	WB	L	1099+60								50		50	
290 RAMP	WB	L	1113+00									5		
290 RAMP	WB	L	1134+90									5		
290 RAMP	WB	R	1146+50								50		50	
290 RAMP	WB	L	1179+80									5		
290 RAMP	WB	R	1180+30								20			20
290	WB	L	898+95									10		
290	WB	L	910+00									10		
290 RAMP	WB	R	924+50									5		
290	WB	L	941+20									5		
290	WB	L	947+00									5		
290	WB	L	969+20									5		
290	WB	L	1099+00									10		
290	WB	L	1109+50									5		
290	WB	L	1114+80									5		
290 RAMP	EB	R	1145+50											
290 RAMP	EB	L	1146+00								58			58
290 RAMP	EB	R	1146+00								86			86
290 RAMP	EB	L	1161+80								12			12
290 RAMP	EB	R	1164+00								51			51
290	EB	R	1172+50								50			50
290	EB	R	1175+10								76			76
290 RAMP	EB	R	1178+20								90			90
290 RAMP	WB	R	1166+30	25		25								
290 RAMP	WB	R	1006+50	25		25								
290	WB	R	920+80						15					
290	WB	R	931+40						10					
290	WB	R	963+50						10					
290	WB	R	971+70						10					
290	EB	L	971+70							50				
290	WB	R	978+50						5					
290	WB	L	1004+50							10				
290	WB	R	1043+00						20					
290	WB	R	1071+50						40					
290	WB	R	1113+00						30					
290	WB	R	1133+80						50					
290	WB	R	1175+50						35					
290	WB	R	1205+50						10					
TOTAL				50	250	50	1	1	235	60	4,189	143	3,746	443

CONTRACT 60G53
TEMPORARY INFORMATION SIGNING - STAGE 1

STATION	LEGEND/DESCRIPTION	PANEL COVER DIMENSIONS		PANEL COVER AREA
		WIDTH (FT)	HEIGHT (FT)	(SQ FT)
885+00	COVER	2.0	2.5	5.0
895+10	COVER	2.0	2.5	5.0
885+00	ARROW	2.0	2.0	4.0
895+10	ARROW	2.0	2.0	4.0
TOTAL				18.0

CONTRACT 60G53
TEMPORARY INFORMATION SIGNING - STAGE 2

STATION	LEGEND/DESCRIPTION	PANEL COVER DIMENSIONS		PANEL COVER AREA
		WIDTH (FT)	HEIGHT (FT)	(SQ FT)
879+50	COVER	2.0	8.0	16.0
885+00	LEFT LANE	2.0	15.0	30.0
895+10	LEFT 1/4 MILE	2.0	15.0	30.0
TOTAL				76.0

CONTRACT 60G53
PORTLAND CEMENT CONCRETE SHOULDERS

LOCATION	DESCRIPTION	PAVED SHOULDER REMOVAL	PORTLAND CEMENT CONCRETE SHOULDERS 6"
		(SQ YD)	(SQ YD)
CICERO AVE. TO KEELER AVE.	EB INSIDE SHOULDER	10	10
	WB INSIDE SHOULDER	10	10
KEELER AVE. TO HOMAN AVE.	EB INSIDE SHOULDER	10	10
	WB INSIDE SHOULDER	10	10
HOMAN AVE. TO CALIFORNIA AVE.	EB INSIDE SHOULDER	10	10
	WB INSIDE SHOULDER	10	10
CALIFORNIA AVE. TO LEAVITT ST.	EB INSIDE SHOULDER	10	10
	WB INSIDE SHOULDER	10	10
LEAVITT ST. TO PAULINA ST.	EB INSIDE SHOULDER	10	10
	WB INSIDE SHOULDER	10	10
TOTAL		100	100

CONTRACT 60G53
TEMPORARY PAVEMENT MARKING AND TEMPORARY IMPACT ATTENUATOR SCHEDULE

STAGE	TEMPORARY PAVEMENT MARKING - LINE 6"	WET REFLECTIVE TEMPORARY TAPE, TYPE III, 4 INCH	WET REFLECTIVE TEMPORARY TAPE, TYPE III, 5 INCH	WET REFLECTIVE TEMPORARY TAPE, TYPE III, 8 INCH	WET REFLECTIVE TEMPORARY TAPE, TYPE III, 12 INCH	WET REFLECTIVE TEMPORARY TAPE, TYPE III, LETTERS & SYMBOLS	PAVEMENT MARKING REMOVAL	EPOXY PAVEMENT MARKING - LETTERS AND SYMBOLS	EPOXY PAVEMENT MARKING - LINE 4 INCH	EPOXY PAVEMENT MARKING - LINE 5 INCH	EPOXY PAVEMENT MARKING - LINE 8 INCH	IMPACT ATTENUATORS, TEMPORARY (NON-REDIRECTIVE), TEST LEVEL 3	IMPACT ATTENUATORS, RELOCATE (NON-REDIRECTIVE), TEST LEVEL 3
		(FOOT)	(FOOT)	(FOOT)	(FOOT)	(SQ FT)	(SQ FT)	(FOOT)	(FOOT)	(FOOT)	(EACH)	(EACH)	
1	1989	26,892	2,123	21,126	2,470	145	14,439					2	
2	1878	38,340	9,214	8,008	230		3,106						2
RESURFACING		5,981	10,440	4,593	706			654	299,013	154,361	86,047		
TOTAL		3867	71,013	21,777	33,727	3,406	145	17,545	654	299,013	154,361	86,047	2

REVISED 12/21/2009, ABC

UPSTREAM MH STA - O/S*	DOWNSTREAM MH STA - O/S*	PIPE SIZE	LOCATION DIST. FROM US MH	MAIN DRAIN CLEANING	APPROXIMATE VOLUME OF DEBRIS
FROM EB ALIGNMENT	FROM EB ALIGNMENT	H X W	FT	FT	CU. YD
874+80 - 40' R	868+00 - 40' R	4'6" x 4'2"	674.9	75.0	7.0
880+12 - 75' R	874+80 - 40' R	4'6" x 4'2"	0.0	542.0	32.0
884+00 - 45' R	880+12 - 75' R	4'2" x 3'11"	17.8	5.0	0.5
884+00 - 45' R	880+12 - 75' R	4'6" x 4'2"	229.6	200.0	15.0
898+50 - 45' R	904+50 - 150' R	4'5" x 4'	194.7	110.0	6.5
898+50 - 45' R	904+50 - 150' R	4'5" x 4'	74.9	2.0	0.5
898+50 - 45' R	904+50 - 150' R	4'7" x 4'1"	157.6	158.0	25.0
904+50 - 150' R	908+25 - 100' R	5' x 5'	0.0	373.0	10.0
908+25 - 100' R	911+85 - 0'	4'6" x 4'1"	3.5	20.0	1.5
908+25 - 100' R	911+85 - 0'	4'6" x 4'1"	78.1	20.0	1.5
908+25 - 100' R	911+85 - 0'	4'7" x 4'1"	0.0	400.0	50.0
911+85 - 0'	917+25 - 20' R	4'6" x 4'1"	537.0	20.0	1.5
911+85 - 0'	917+25 - 20' R	4'6" x 4'1"	423.2	25.0	2.0
911+85 - 0'	917+25 - 20' R	4'6" x 4'1"	220.7	120.0	7.0
917+25 - 20' R	923+50 - 0'	4'8" x 4'1"	1.1	5.0	0.5
917+25 - 20' R	923+50 - 0'	4'8" x 4'1"	75.2	5.0	0.5
917+25 - 20' R	923+50 - 0'	4'8" x 4'1"	230.8	5.0	0.5
917+25 - 20' R	923+50 - 0'	4'8" x 4'1"	350.0	5.0	0.5
917+25 - 20' R	923+50 - 0'	4'8" x 4'1"	372.1	20.0	1.5
917+25 - 20' R	923+50 - 0'	4'8" x 4'1"	481.8	100.0	6.5
917+25 - 20' R	923+50 - 0'	4'8" x 4'1"	623.9	5.0	0.5
923+50 - 0'	930+00 - 0'	4'8" x 4'1"	0.0	625.0	20.0
930+00 - 0'	936+35 - 0'	4'6" x 4'2"	0.0	13.0	1.5
930+00 - 0'	936+35 - 0'	4'4" x 4'	81.7	62.0	5.5
930+00 - 0'	936+35 - 0'	4'4" x 4'	411.4	254.0	22.0
936+35 - 0'	943+85 - 0'	4'6" x 4'2"	505.2	550.0	30.0
936+35 - 0'	943+85 - 0'	4'6" x 4'2"	608.8	4.0	0.5
943+85 - 0'	950+75 - 5' L	5'7" x 5'	354.8	325.0	48.0
950+75 - 5' L	959+30 - 15' R	5'2" x 4'11"	854.1	855.0	66.0
959+30 - 15' R	965+20 - 5' L	5'2" x 4'10"	589.0	589.0	75.0
965+20 - 5' L	973+50 - 5' L	5'2" x 4'10"	156.3	676.0	85.0
973+50 - 5' L	979+60 - 5' L	6'2" x 5'6"	303.5	2.0	0.5
973+50 - 5' L	979+60 - 5' L	6'2" x 5'6"	549.2	550.0	60.0
979+60 - 5' L	986+06 - 5' L	6'2" x 5'6"	646.4	647.0	71.0
986+06 - 5' L	991+80 - 5' L	6'6" x 6'	9.5	2.0	0.5
986+06 - 5' L	991+80 - 5' L	6'6" x 6'	651.8	600.0	118.0
991+80 - 5' L	997+32 - 5' L	6'6" x 6'	56.1	496.0	61.0
997+32 - 5' L	1003+89 - 5' L	6'6" x 6'	518.0	2.0	0.5
997+32 - 5' L	1003+89 - 5' L	6'6" x 6'	24.5	684.8	135.0
1003+89 - 5' L	1012+57 - 5' L	6'6" x 6'	849.7	20.0	4.0
1012+57 - 5' L	1019+15 - 5' L	6'6" x 6'	345.5	2.0	0.5
1012+57 - 5' L	1019+15 - 5' L	6'6" x 6'	422.9	2.0	0.5
1025+60 - 5' L	1019+15 - 5' L	7'5" x 6'10"	644.3	644.0	105.0
1025+60 - 5' L	1031+40 - 5' L	7'5" x 6'10"	0.0	579.0	92.0
1031+40 - 5' L	1037+10 - 5' L	7'5" x 6'10"	0.0	197.0	50.0
1031+40 - 5' L	1037+10 - 5' L	8'6" x 6'7"	594.1	30.0	10.0
1037+10 - 5' L	1044+59 - 6' R	8'6" x 6'7"	0.0	750.0	150.0
1044+59 - 6' R	1050+56 - 5' L	8'6" x 6'7"	0.0	597.0	125.0
1050+56 - 5' L	1059+91 - 5' L	8'7" x 7'4"	44.1	45.0	15.0
1050+56 - 5' L	1059+91 - 5' L	8'7" x 7'4"	261.3	10.0	4.0
1050+56 - 5' L	1059+91 - 5' L	8'7" x 7'4"	929.2	215.0	75.0
1059+91 - 5' L	1069+18 - 124' L	8'7" x 7'4"	2.0	927.0	195.0
1069+18 - 124' L	1073+30 - 135' L	8'7" x 7'4"	0.0	417.0	145.0
1069+18 - 124' L	1073+30 - 135' L	8'7" x 7'4"	20.3	2.0	0.5
1069+18 - 124' L	1073+30 - 135' L	8'7" x 7'4"	250.3	2.0	0.5
1073+30 - 135' L	1078+62 - 135' L	8' x 7'2"	631.6	632.0	60.0
1078+62 - 135' L	1085+81 - 135' L	8' x 7'2"	719.4	720.0	70.0
1092+15 - 142' L	1098+31 - 135' L	8' x 7'2"	0.0	616.0	60.0
1098+31 - 135' L	1104+11 - 135' L	8' x 7'2"	0.0	580.0	55.0
1104+11 - 135' L	1106+00 - 135' L	8' x 7'2"	164.3	165.0	50.0
1106+00 - 135' L	1112+39 - 135' L	8' x 7'2"	619.2	620.0	185.0
1112+39 - 135' L	1119+71 - 135' L	8' x 7'2"	0.0	732.0	69.0
1119+71 - 135' L	1125+10 - 135' L	8' x 7'2"	0.0	539.0	50.0
1119+71 - 135' L	1125+10 - 135' L	8' x 7'2"	212.9	21.0	0.5
1125+10 - 135' L	1131+59 - 135' L	8' x 7'2"	648.6	649.0	61.0
1131+59 - 135' L	1136+98 - 135' L	8' x 7'2"	2.0	536.0	50.0
1136+98 - 135' L	1141+71 - 135' L	8' x 7'2"	0.0	474.0	45.0
1141+71 - 135' L	1145+27 - 135' L	8' x 7'2"	0.0	357.0	33.0
1145+27 - 135' L	1150+00 - 165' L	8' x 8'	533.5	534.0	50.0
1150+00 - 165' L	1155+50 - 170' L	8' x 8'	549.5	550.0	50.0
1155+50 - 170' L	1159+80 - 170' L	8' x 8'	2.0	430.0	50.0
1159+80 - 170' L	1165+93 - 170' L	8' x 8'	0.0	614.0	90.0
1165+93 - 170' L	1177+43 - 12' R	8' x 8'	0.0	1340.0	200.0
1177+43 - 12' R	1191+34 - 12' R	8' x 7'8"	0.0	1391.0	130.0
1191+34 - 12' R	1199+00 - 12' R	8' x 7'8"	0.0	1000.0	100.0
1199+00 - 12' R	1212+00 - 12' R	8' x 7'1"	0.0	1300.0	240.0
			TOTAL	27391	

UPSTREAM MH STA - O/S*	DOWNSTREAM MH STA - O/S*	PIPE SIZE	LOCATION DIST. FROM US MH	MAIN DRAIN JOINT REPAIR
FROM EB ALIGNMENT	FROM EB ALIGNMENT	H X W	FT	FT
908+25 - 100' R	911+85 - 0'	4'6" x 4'1"	21.4	12.0
908+25 - 100' R	911+85 - 0'	4'7" x 4'1"	18.2	3.0
908+25 - 100' R	911+85 - 0'	4'7" x 4'1"	99.3	12.0
911+85 - 0'	917+25 - 20' R	4'6" x 4'1"	144.8	12.0
965+20 - 5' L	973+50 - 5' L	5'2" x 4'10"	414.0	13.5
979+60 - 5' L	986+06 - 5' L	6'2" x 5'6"	47.1	16.5
979+60 - 5' L	986+06 - 5' L	6'2" x 5'6"	107.5	16.5
979+60 - 5' L	986+06 - 5' L	6'2" x 5'6"	202.4	16.5
1012+57 - 5' L	1019+15 - 5' L	6'6" x 6'	33.8	17.0
1025+60 - 5' L	1019+15 - 5' L	7'5" x 6'10"	92.2	6.0
1073+30 - 135' L	1078+62 - 135' L	8' x 7'2"	631.6	15.0
1092+15 - 142' L	1098+31 - 135' L	8' x 7'2"	566.7	21.0
1098+31 - 135' L	1104+11 - 135' L	8' x 7'2"	17.7	17.0
1131+59 - 135' L	1136+98 - 135' L	8' x 7'2"	538.4	6.0
1150+00 - 165' L	1155+50 - 170' L	8' x 8'	549.5	6.0
1155+50 - 170' L	1159+80 - 170' L	8' x 8'	415.6	2.0
1159+80 - 170' L	1165+93 - 170' L	8' x 8'	17.8	21.0
1177+43 - 12' R	1191+34 - 12' R	8' x 7'8"	26.2	21.0
1177+43 - 12' R	1191+34 - 12' R	8' x 7'8"	144.2	21.0
			TOTAL	255

* THE STATIONS PROVIDED FOR THE PROPOSED CLEANING AND REPAIR LOCATIONS ARE BASED ON PREVIOUS PLANIMETRICS AND AERIAL PHOTOGRAPHY, AND IS NOT THE RESULT OF A GROUND SURVEY. THE STATIONING IS PROVIDED FOR REFERENCE PURPOSES ONLY.

Added Sheet 12/21/2009, LIN

FILE NAME #	DESIGNED - SGL	REVISED 12/21/2009
#FILE#	DRAWN - SGL	REVISED -
USER NAME # #USER#	CHECKED - FML	REVISED -
PLOT DATE # #DATE#	DATE - 12/2009	REVISED -



STATE OF ILLINOIS
DEPARTMENT OF TRANSPORTATION

SCHEDULE OF QUANTITIES

SCALE:	SHEET NO. 1 OF 2 SHEETS	STA.	TO STA.
--------	-------------------------	------	---------

F.A.I. RTE.	SECTION	COUNTY	TOTAL SHEETS	SHEET NO.
290	(2828B.D, ETC., 3031.IRS-6	COOK	185	15A
CONTRACT NO. 60G53			ILLINOIS FED. AID PROJECT	

DRAINAGE STRUCTURE STA - 0/S*	DRAINAGE STRUCTURES TO BE CLEANED
FROM EB ALIGNMENT	EACH
874+80 - 40' R	1
880+12 - 75' R	1
884+00 - 45' R	1
898+50 - 45' R	1
904+50 - 150' R	1
908+25 - 100' R	1
911+85 - 0'	1
917+25 - 20' R	1
923+50 - 0'	1
930+00 - 0'	1
936+35 - 0'	1
943+85 - 0'	1
950+75 - 5' L	1
959+30 - 15' R	1
965+20 - 5' L	1
973+50 - 5' L	1
979+60 - 5' L	1
986+06 - 5' L	1
991+80 - 5' L	1
997+32 - 5' L	1
1003+89 - 5' L	1
1012+57 - 5' L	1
1019+15 - 5' L	1
1025+60 - 5' L	1
1031+40 - 5' L	1
1037+10 - 5' L	1
1044+59 - 6' R	1
1050+56 - 5' L	1
1059+91 - 5' L	1
1069+18 - 124' L	1
1073+30 - 135' L	1
1078+62 - 135' L	1
1085+81 - 135' L	1
1092+15 - 142' L	1
1098+31 - 135' L	1
1104+11 - 135' L	1
1106+00 - 135' L	1
1112+39 - 135' L	1
1119+71 - 135' L	1
1125+10 - 135' L	1
1131+59 - 135' L	1
1136+98 - 135' L	1
1141+71 - 135' L	1
1145+27 - 135' L	1
1150+00 - 165' L	1
1155+50 - 170' L	1
1159+80 - 170' L	1
1165+93 - 170' L	1
1177+43 - 12' R	1
1191+34 - 12' R	1
1199+00 - 12' R	1
1212+00 - 12' R	1
JOBSITE	628
TOTAL	680


UPSTREAM MH STA - 0/S*	DOWNSTREAM MH STA - 0/S*	PIPE SIZE	LOCATION DIST. FROM US MH	APPROXIMATE VOLUME OF PATCHING REQUIRED	STRUCTURAL REPAIR OF CONCRETE (DEPTH EQUAL TO OR LESS THAN 5 IN.)	STRUCTURAL REPAIR OF CONCRETE (DEPTH GREATER THAN 5 IN.)
FROM EB ALIGNMENT	FROM EB ALIGNMENT	H X W	FT	CU. YD	SO. FT.	SO. FT.
874+80 - 40' R	868+00 - 40' R	4'6" x 4'2"	398.2	0.3	2.0	-
884+00 - 45' R	880+12 - 75' R	4'2" x 3'11"	176.0	0.3	-	16.0
884+00 - 45' R	880+12 - 75' R	4'6" x 4'2"	369.7	1.5	-	40.0
884+00 - 45' R	880+12 - 75' R	4'6" x 4'2"	403.9	1.5	-	40.0
930+00 - 0'	936+35 - 0'	4'4" x 4'	232.4	1.5	36.0	-
936+35 - 0'	943+85 - 0'	4'6" x 4'2"	428.5	1.0	24.0	-
991+80 - 5' L	997+32 - 5' L	6'6" x 6'	114.5	0.3	2.0	-
1031+40 - 5' L	1037+10 - 5' L	7'5" x 6'10"	68.3	0.3	2.0	-
1031+40 - 5' L	1037+10 - 5' L	8'6" x 6'7"	523.9	0.3	2.0	-
1037+10 - 5' L	1044+59 - 6' R	8'6" x 6'7"	142.3	0.3	2.0	-
1037+10 - 5' L	1044+59 - 6' R	8'6" x 6'7"	148.0	1.0	-	32.0
1050+56 - 5' L	1059+91 - 5' L	8'7" x 7'4"	462.5	1.0	-	32.0
1073+30 - 135' L	1078+62 - 135' L	8' x 7'2"	114.3	1.5	-	40.0
1078+62 - 135' L	1085+81 - 135' L	8' x 7'2"	455.0	0.3	2.0	-
1078+62 - 135' L	1085+81 - 135' L	8' x 7'2"	642.5	0.3	2.0	-
1078+62 - 135' L	1085+81 - 135' L	8' x 7'2"	698.2	0.3	2.0	-
1112+39 - 135' L	1119+71 - 135' L	8' x 7'2"	559.1	1.5	36.0	-
1155+50 - 170' L	1159+80 - 170' L	8' x 8'	419.7	0.3	2.0	-
1159+80 - 170' L	1165+93 - 170' L	8' x 8'	17.8	0.3	2.0	-
1159+80 - 170' L	1165+93 - 170' L	8' x 8'	62.0	0.3	2.0	-
1159+80 - 170' L	1165+93 - 170' L	8' x 8'	564.1	0.3	2.0	-
1177+43 - 12' R	1191+34 - 12' R	8' x 7'8"	729.9	2.0	-	56.0
TOTAL					120	256

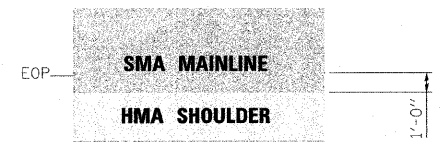
PUMP STATION	AREA	DEPTH	VOLUME OF WET PIT	VOLUME OF DEBRIS IN WET PIT (ASSUME 25% FULL)	CLEANING OF WET PIT PRIOR TO CONSTRUCTION**	CLEANING OF WET PIT AFTER COMPLETION OF CONSTRUCTION**	CLEANING OF WET PIT TOTAL**
NO.	SQ YD	FT	CU YD	CU YD	TONS	TONS	TONS
5	36	45	540	135	200	200	400
26	48	58	928	232	345	345	690

* THE STATIONS PROVIDED FOR THE PROPOSED CLEANING AND REPAIR LOCATIONS ARE BASED ON PREVIOUS PLANIMETRICS AND AERIAL PHOTOGRAPHY, AND IS NOT THE RESULT OF A GROUND SURVEY. THE STATIONING IS PROVIDED FOR REFERENCE PURPOSES ONLY.

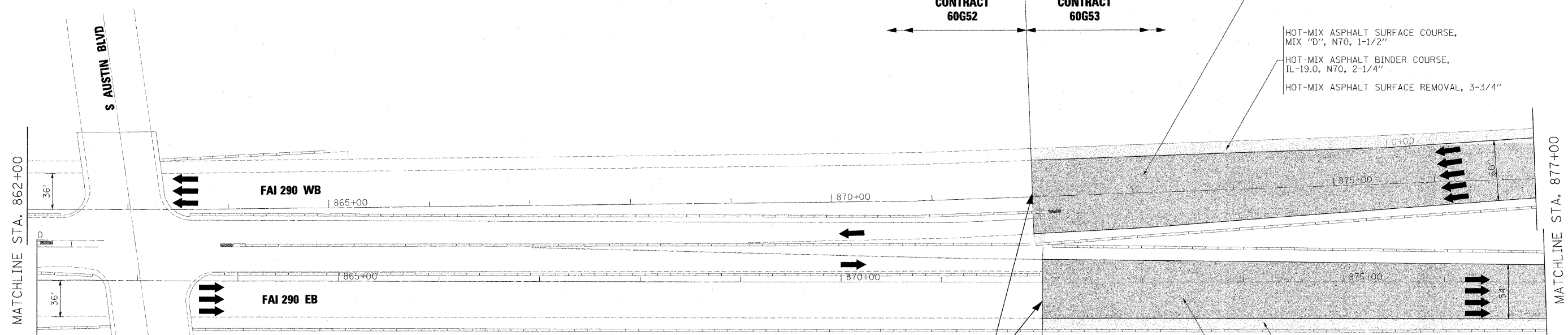
** AN ESTIMATED DEBRIS DENSITY OF 110 LB/CF HAS BEEN UTILIZED.

Added Sheet 12/21/2009, LIN

FILE NAME *	DESIGNED - SGL	REVISED 12/21/2009	 LIN ENGINEERING, LTD. Consulting Engineers <small>Channah, Illinois Westmont, Illinois</small>	STATE OF ILLINOIS DEPARTMENT OF TRANSPORTATION			SCHEDULE OF QUANTITIES			F.A.I. RTE.	SECTION	COUNTY	TOTAL SHEETS	SHEET NO.
#FILE#	DRAWN - SGL	REVISED -		SCALE:	SHEET NO. 2 OF 2 SHEETS	STA.	TO STA.	290	(2828B,D, ETC., 3031,URS-6)	COOK	185	15B		
USER NAME = #USER#	CHECKED - FML	REVISED -								CONTRACT NO. 60C53				
PLOT DATE = #DATE#	DATE - 12/2009	REVISED -	ILLINOIS FED. AID PROJECT											



NOTE:
MAINLINE PAVING TO EXTEND 1' ONTO HMA SHOULDERS. SEE TYPICAL SECTIONS.



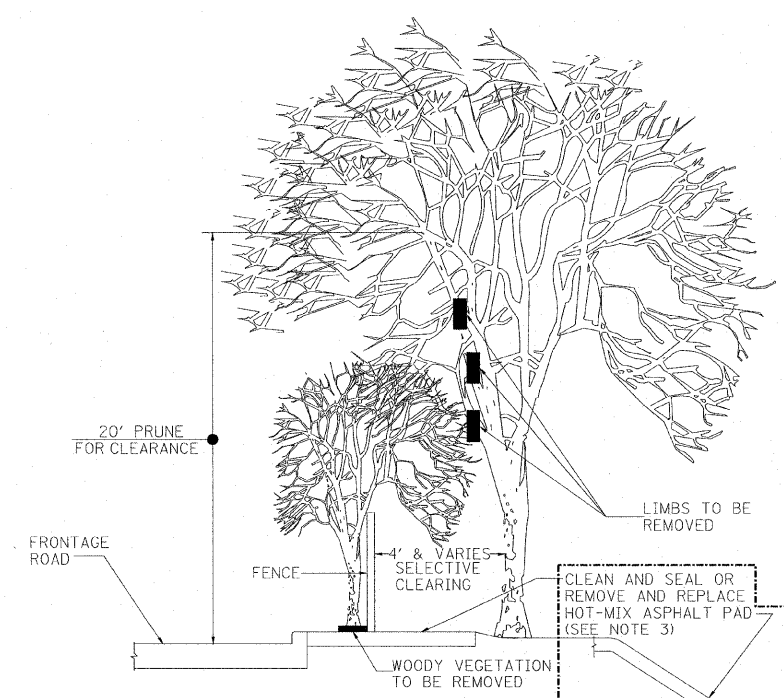
POLYMERIZED HOT-MIX ASPHALT SURFACE COURSE, STONE MATRIX ASPHALT, N80, 2"
POLYMERIZED HOT-MIX ASPHALT BINDER COURSE, STONE MATRIX ASPHALT, N80, 2"
HOT-MIX ASPHALT SURFACE REMOVAL, 4"

HOT-MIX ASPHALT SURFACE COURSE, MIX "D", N70, 1-1/2"
HOT-MIX ASPHALT BINDER COURSE, IL-19.0, N70, 2-1/4"
HOT-MIX ASPHALT SURFACE REMOVAL, 3-3/4"

HOT-MIX ASPHALT SURFACE COURSE, MIX "D", N70, 1-1/2"
HOT-MIX ASPHALT BINDER COURSE, IL-19.0, N70, 2-1/4"
HOT-MIX ASPHALT SURFACE REMOVAL, 3-3/4"

POLYMERIZED HOT-MIX ASPHALT SURFACE COURSE, STONE MATRIX ASPHALT, N80, 2"
POLYMERIZED HOT-MIX ASPHALT BINDER COURSE, STONE MATRIX ASPHALT, N80, 2"
HOT-MIX ASPHALT SURFACE REMOVAL, 4"

BEGIN IMPROVEMENTS
STA. WB 872+00
STA. EB 872+00



TREE MAINTENANCE & OFF-ROAD PRESERVATION & REPAIR DETAIL

NOTES:

1. THE NATIONAL ARBORIST ASSOCIATION'S PRUNING STANDARDS FOR SHADE TREES CLASS II - STANDARD PRUNING SPECIFICATIONS SHALL BE FOLLOWED.
2. ALL TREES AND SHRUBS OR OTHER WOODY VEGETATION GROWING IN THE FENCE LINE AND ON THE FRONTAGE ROAD SIDE OF THE FENCE SHALL BE CUT FLUSH WITH THE GROUND AND THE STUMPS TREATED WITH A HERBICIDE TO PREVENT RESPROUTING.

3. CLEAN AND SEAL HOT-MIX ASPHALT PAD SHALL BE PAID FOR AS ASPHALTIC EMULSION SLURRY SEAL, FIBER ASPHALT AND BITUMINOUS MATERIALS (PRIME COAT). REMOVE AND REPLACE HOT-MIX ASPHALT PAD SHALL BE PAID FOR AS PAVED SHOULDER REMOVAL (SPECIAL) AND INCIDENTAL HOT-MIX ASPHALT SURFACING (SPECIAL).

TYPICAL APPLICATIONS OF THIS WORK INCLUDE, BUT ARE NOT LIMITED TO, ALL HOT-MIX ASPHALT PADS AT FENCING ALONG FRONTAGE ROADS, ALL HOT-MIX ASPHALT SIDE SLOPES AT EXIT AND ENTRANCE RAMPS AND BRIDGE APPROACHES, AND ALL HOT-MIX ASPHALT PADS AT ENDS OF BARRIER TERMINAL WALLS. FOR LOCATIONS AND EXTENT OF WORK, THE CONTRACTOR SHALL COORDINATE WITH THE ENGINEER AND CONTACT RICK WANNER, ROADSIDE DEVELOPMENT ARCHITECT, IDOT ROADSIDE DEVELOPMENT UNIT, AT (847) 705-4172 AT LEAST 72 HOURS PRIOR TO STARTING WORK.
THE PAD SHALL BE 4" THICK

1 REVISED 12/21/2009, ABC

FILE NAME =	DESIGNED - CAG	REVISED - 12/21/09
#FILEL#	DRAWN - DMS	REVISED -
USER NAME = #USER#	CHECKED - CAR	REVISED -
PLOT DATE = #DATE#	DATE - 10/16/09	REVISED -

benesch

**STATE OF ILLINOIS
DEPARTMENT OF TRANSPORTATION**

**ROADWAY PLAN
STA 862+00 TO STA 877+00**

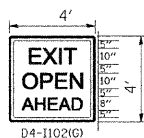
SCALE: 1"=50' SHEET NO. 1 OF 24 SHEETS STA. TO STA.

F.A.I. RTE.	SECTION	COUNTY	TOTAL SHEETS	SHEET NO.
290	(2828B,D, ETC., 3031,11RS-6	COOK	185	49
CONTRACT NO. 60G53				
FED. ROAD DIST. NO. ILLINOIS FED. AID PROJECT				

STAGE III

STAGE III NOTES

1. SEQUENCE OF CONSTRUCTION: PAVEMENT PATCHING, HMA SURFACE REMOVAL AND PROPOSED HMA COURSES AS DETAILED IN EACH OPERATION SECTION. WORK CAN OCCUR CONCURRENTLY, BUT SEQUENCE SHALL BE MAINTAINED AND NOT CONFLICT. RAMP WORK WILL BE COMPLETED USING DISTRICT DETAIL TC-8 - FREEWAY AND EXIT RAMP CLOSURE DETAILS.
2. LANE AND RAMP CLOSURES ALLOWED AS STIPULATED IN THE SPECIAL PROVISIONS. CONTRACTOR MAY NOT CLOSE ADJACENT EXIT OR ENTRANCE RAMP AT THE SAME TIME.
3. LANE CLOSURES FOR RESURFACING OPERATIONS SHALL BE AS STIPULATED IN THE SPECIAL PROVISION "KEEPING THE EXPRESSWAY OPEN TO TRAFFIC."
4. LANE CLOSURES PER STANDARDS 701400, 701401 AND 701446.
5. REDUCE LANE WIDTH USING 35:1 TAPER PER DISTRICT DETAIL TC-9 - TRAFFIC CONTROL DETAILS FOR FREEWAY SINGLE AND MULTI-LANE WEAVE, A W5-1 (48 x 48) ROAD NARROWS SIGN WILL BE ERECTED 500' IN ADVANCE OF THE TAPER.
6. THE CONTRACTOR SHALL ERECT ROAD CONSTRUCTION AHEAD SIGNS (W20-I103(O-48) WITH FLASHING BEACON ON ALL ARTERIAL ROADWAYS APPROACHING INTERCHANGE RAMP.
7. GRADE DIFFERENTIAL BETWEEN LANES SHALL NOT EXCEED 2".
8. PARTIAL MILLING OF PAVEMENT FOR AN OPERATION WILL NOT BE PAID FOR SEPARATELY. BUT WILL BE PAID FOR AT THE FINAL MILLING THICKNESS SHOWN ON THE TYPICAL SECTIONS.
9. EPOXY PAVEMENT MARKING LINES SHALL BE USED FOR TEMPORARY PAVEMENT MARKINGS.
10. REMOVAL OF EXISTING PAVEMENT MARKING, WHEN REQUIRED, SHALL BE PAID FOR AS "PAVEMENT MARKING REMOVAL."
11. EXISTING OR TEMPORARY PAVEMENT MARKINGS REMOVED DURING MILLING OPERATIONS WILL NOT BE PAID FOR SEPARATELY.
12. CASTINGS EXPOSED IN TRAVEL LANES SHALL BE PROTECTED PER APPLICABLE PORTIONS OF ARTICLE 603.07 OF THE STANDARD SPECIFICATIONS. THIS WORK WILL NOT BE PAID FOR SEPARATELY, BUT SHALL BE INCLUDED IN THE VARIOUS HMA/SMA BINDER AND SURFACE COURSES PLACED.
13. OMIT STAGE III OPERATIONS THROUGH BRIDGE AND CONCRETE SECTIONS.
14. SIGNS SHALL BE INSTALLED AS INSTRUCTED BELOW.



1" BORDER LINE
GREEN REFLECTIVE
BACKGROUND
WITH WHITE LEGEND

SIGN SHALL BE INSTALLED
IN ADVANCE OF ALL OPEN/EXIT
RAMP WHEN THE RIGHT
LANES ARE CLOSED.

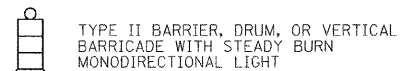


SIGN SHALL BE INSTALLED
ON BOTH SIDES OF THE ROADWAY
500' IN ADVANCE OF AREAS WHERE
THERE IS A GRADE DIFFERENTIAL
BETWEEN LANES, AFTER EACH
ENTRANCE RAMP AND A MINIMUM
OF EVERY MILE.

15. THE CONTRACTOR SHALL COORDINATE THE ROADWAY AND STRUCTURAL WORK SO BITUMINOUS MATERIALS ARE NOT TRACKED ON THE BRIDGE DECKS BEFORE BEING SEALED.
16. "EPOXY PAVEMENT MARKING - LETTERS AND SYMBOLS" SHALL BE INSTALLED ON MAINLINE ROADWAY DURING STAGE III OPERATIONS, IN LOCATIONS WHERE LETTERS/SYMBOLS PAVEMENT MARKINGS EXIST PRIOR TO SURFACE REMOVAL.
17. WORK ZONE SPEED LIMIT SIGNS SHALL REMAIN IN PLACE UNTIL ALL BINDER IS PLACED.

LEGEND

- ① EXISTING PAVEMENT MARKING
- ② EPOXY PAVEMENT MARKING - LINE 5" (WHITE 10' DASH, 30' SKIP)
- ③ EPOXY PAVEMENT MARKING - LINE 4" (YELLOW LEFT & WHITE RIGHT)
- ④ PROPOSED PAVEMENT MARKING. SEE PAVEMENT MARKING PLANS.



- BITUMINOUS SURFACE REMOVAL
- HMA/SMA BINDER AND SURFACE COURSES

NOTE

PATCHING TO BE COMPLETED IN STAGES 1 AND 2 UNDER PERMANENT LANE CLOSURES. ANY PATCHING NOT COMPLETED IN STAGES 1 AND 2 SHALL BE COMPLETED UNDER WEEKEND CLOSURES USING DISTRICT 1 DETAIL TC-25 TRAFFIC CONTROL DETAILS FOR FREEWAY CENTER LANE CLOSURE AND SHOULDER LANE CLOSURE. THE CLASS OF CONCRETE FOR CLASS A PATCHES SHALL BE PP-3 OR HIGHER.

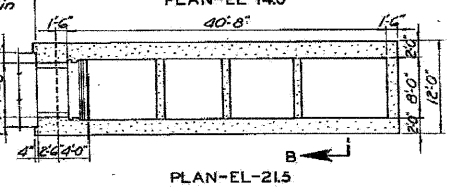
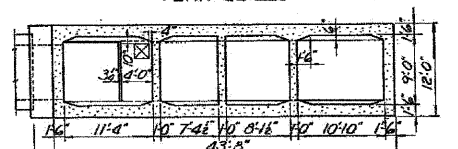
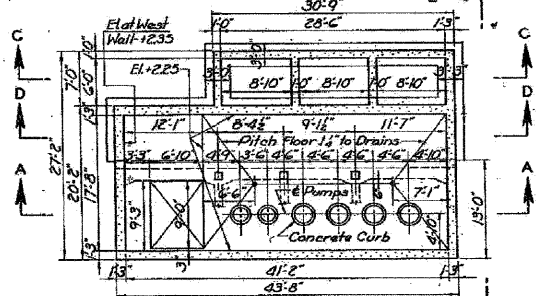
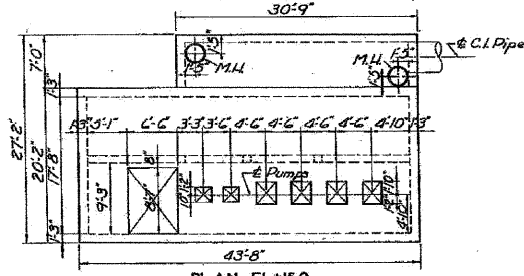
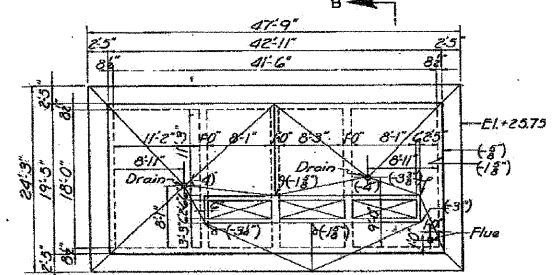
THE CONTRACTOR SHALL STAGE RESURFACING OPERATIONS SUCH THAT THE CROSS SLOPE FROM THE CROWN OF THE ROADWAY TO THE OUTSIDE EDGE OF THE SHOULDER WILL NOT TRAP WATER ON OPEN TRAFFIC LANES.

① REVISED 12/21/2009, ABC

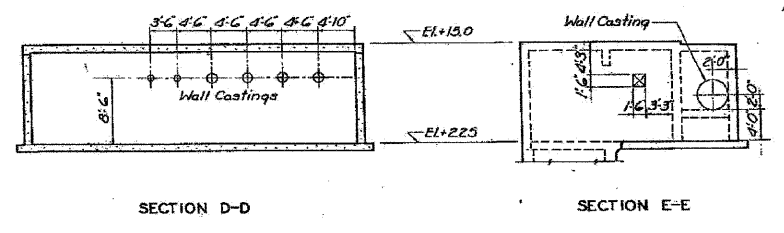
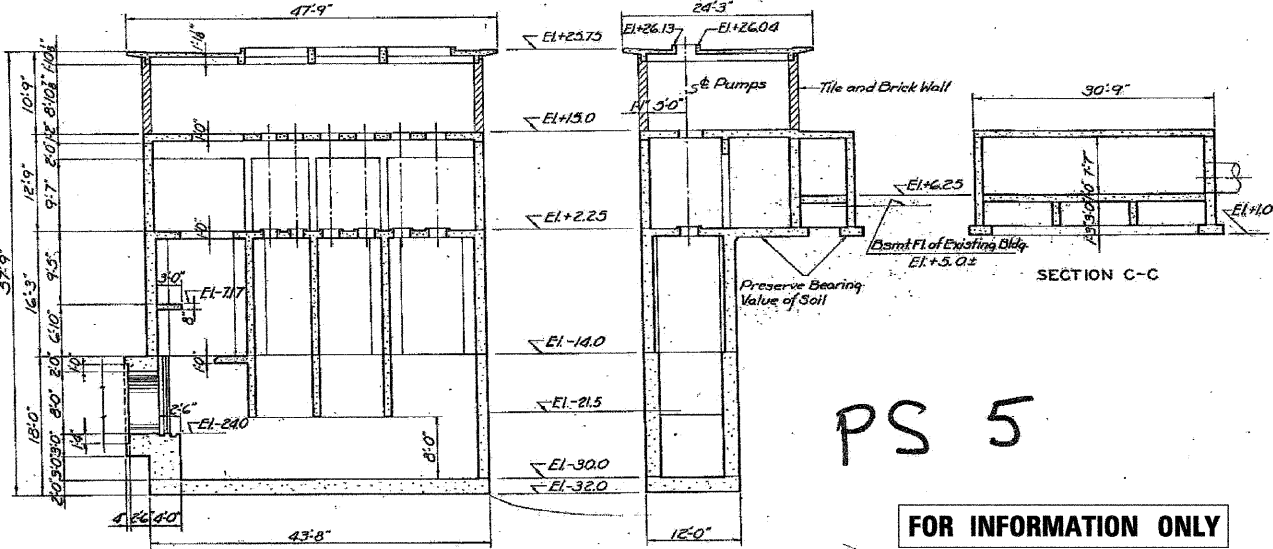
FILE NAME *	DESIGNED - CAG	REVISED - ① 12/21/09	benesch	STATE OF ILLINOIS DEPARTMENT OF TRANSPORTATION	MAINTENANCE OF TRAFFIC TYPICAL SECTION - STAGE 3	F.A.I. RTE.	SECTION	COUNTY	TOTAL SHEETS	SHEET NO.
#FILE#	DRAWN - DMS	REVISED -				290	(28288.D, ETC., 3031.IRS-6)	COOK	185	94
USER NAME * #USER#	CHECKED - CAR	REVISED -				CONTRACT NO. 60G53				
PLOT DATE * #DATE#	DATE - 10/16/09	REVISED -	SCALE:	SHEET NO. 22 OF 28 SHEETS	STA. TO STA.	FED. ROAD DIST. NO. ILLINOIS FED. AID PROJECT				

SECTION	COUNTY	TOTAL SHEETS	SHEET NO.
2424.15-D	COOK	185	124B

Figures thus given (-4) on Roof Plan indicate distances below El.+25.75 Bottom of slab is level



Designed By: R. Soliman
 Drawn By: Sol. Genesee
 Traced By: W. Wood
 Checked By: H.E. Wagoner
 Approved By: [Signature]
 Subway Structural Engineer



PS 5
 FOR INFORMATION ONLY

- Notes:
- Base Slab and Details
 - North and South Walls
 - East and West Walls
 - Plan of Elev.+2.25
 - Plan of Elev.+13.00
 - Roof Plan
 - Plan and Profile
 - General Details
 - Architectural Details
 - Electrical Details
 - Mechanical Details

- Sheet No. 9
- Sheet No. 10
- Sheet No. 11
- Sheet No. 12
- Sheet No. 13
- Sheet No. 14
- Sheet No. 15
- Sheet No. 16
- Sheet No. 17
- Sheet No. 18
- Sheet No. 19
- Sheet No. 20
- Sheet No. 21
- Sheet No. 22

CITY OF CHICAGO
 DEPARTMENT OF SUBWAYS AND SUPERHIGHWAYS
 WEST ROUTE SUPERHIGHWAY
 SECTION 2424.15-D
 PUMPING STATION AND DISCHARGE CONDUIT
 S. DESPLAINES ST. TO S. BRANCH OF CHICAGO RIVER
 PUMPING STATION
 PLANS AND SECTIONS
 FEBRUARY 1951
 SHEET NO. 8 OF 32 SHEETS

Scale of Tracing
 1/4" = 1'-0"
 0 2 4 6 8 16'

Added Sheet 12/21/2009, LIN

FILE NAME *	DESIGNED - SGL	REVISED 12/21/2009
#FILE#	DRAWN - SGL	REVISED -
USER NAME = #USER#	CHECKED - FML	REVISED -
PLOT DATE = #DATE#	DATE - 12/2009	REVISED -

E LIN ENGINEERING, LTD.
 Consulting Engineers
 Chardon, Black Westmont, Blacks

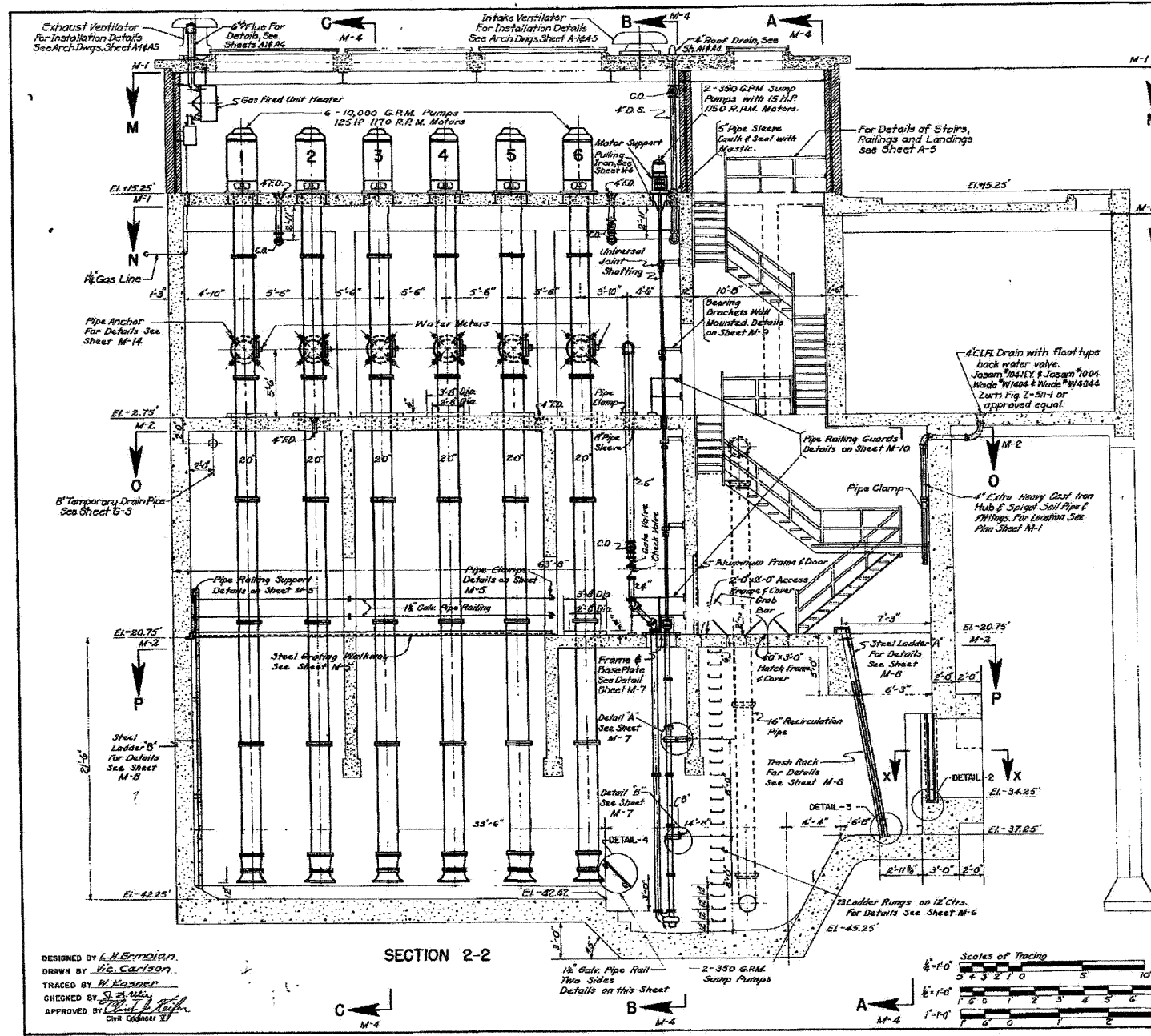
STATE OF ILLINOIS
 DEPARTMENT OF TRANSPORTATION

PUMP STATION NO. 5
 RECORD DRAWINGS

SCALE: SHEET NO. 2 OF 2 SHEETS STA. TO STA.

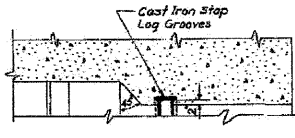
F.A.I. RTE.	SECTION	COUNTY	TOTAL SHEETS	SHEET NO.
290	(2828B.D, ETC., 3031.IRS-6	COOK	185	124B
				CONTRACT NO. 60G53
ILLINOIS FED. AID PROJECT				

X

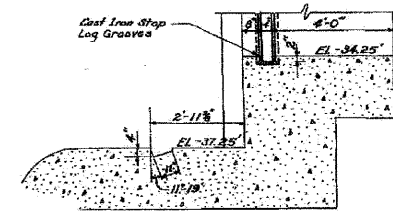


PS
26

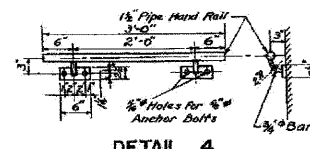
ROUTE NO. 1	SECTION	COUNTY	SHEET
F. A. I. - 26	2-2628.8-30	COOK	41
NO. 2628.8-30	NO. 1	NO. 1	NO. 1



SECTION X-X
Scale 1/2" = 1'-0"



DETAILS 2 & 3
Scale 1/2" = 1'-0"



DETAIL 4
Scale 1" = 1'-0"

NOTE: General Note On Sheet M-1 Applies To This Sheet.

FOR INFORMATION ONLY

REVISIONS	
DATE	DESCRIPTION

CITY OF CHICAGO
DEPARTMENT OF PUBLIC WORKS
BUREAU OF ENGINEERING
SOUTH ROUTE SUPERHIGHWAY
SECTION S-2628.8-30
ROOSEVELT ROAD PUMPING STATION
LONGITUDINAL SECTION

SCALE: AS SHOWN
DATE: FEBRUARY, 1960

CONTRACT
SHEET NO. M-3

DESIGNED BY *L. J. Ermolan*
DRAWN BY *Vic. Carlson*
CHECKED BY *H. Koerner*
APPROVED BY *Paul J. Kelly*
Civil Engineer

SECTION 2-2



STATE OF ILLINOIS
DEPARTMENT OF TRANSPORTATION

PUMP STATION NO. 26
RECORD DRAWINGS

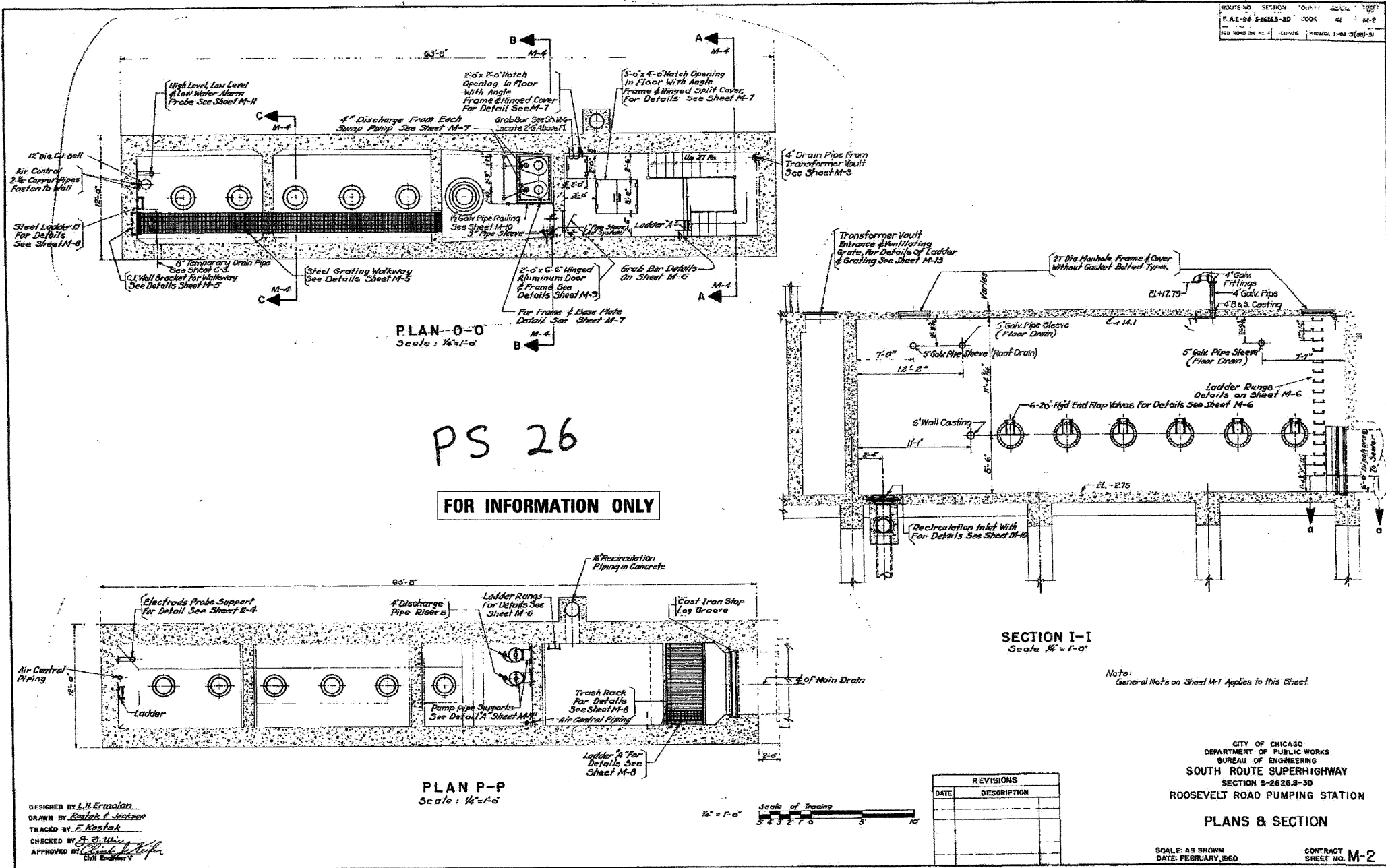
FILE NAME *	DESIGNED - SGL	REVISED 12/21/2009
#FILE#	DRAWN - SGL	REVISED -
USER NAME * #USER#	CHECKED - FML	REVISED -
PLOT DATE * #DATE#	DATE - 12/2009	REVISED -

SCALE: SHEET NO. 1 OF 2 SHEETS STA. TO STA.

F.A.I. RTE.	SECTION	COUNTY	TOTAL SHEETS	SHEET NO.
290	(2828B,D, ETC., 3031,1RS-6	COOK	185	124C
			CONTRACT NO. 60653	
ILLINOIS FED. AID PROJECT				

Added Sheet 12/21/2009. LIN

PROJECT NO.	SECTION	DATE	BY
F.A.I. 26-2626.5-3D	COOK	41	M-2
FILE NAME	DATE	PROJECT	NO.
		2-26-09	30



PS 26
FOR INFORMATION ONLY

DESIGNED BY L.H. Ermolen
DRAWN BY Kostik I. Jackson
TRACED BY F. Kostik
CHECKED BY S. Z. W...
APPROVED BY [Signature]
Civil Engineer

REVISIONS	
DATE	DESCRIPTION

Note: General Note on Sheet M-1 Applies to this Sheet

CITY OF CHICAGO
DEPARTMENT OF PUBLIC WORKS
BUREAU OF ENGINEERING
SOUTH ROUTE SUPERHIGHWAY
SECTION 5-2626.5-3D
ROOSEVELT ROAD PUMPING STATION
PLANS & SECTION

SCALE: AS SHOWN
DATE: FEBRUARY, 1960
CONTRACT SHEET NO. M-2

Added Sheet 12/21/2009, LIN

FILE NAME *	DESIGNED - SGL	REVISED 12/21/2009	<p>LIN ENGINEERING, LTD. Consulting Engineers Chicago, Illinois Westmont, Illinois</p>	<p>STATE OF ILLINOIS DEPARTMENT OF TRANSPORTATION</p>	<p>PUMP STATION NO. 26 RECORD DRAWINGS</p>	F.A.I. RTE.	SECTION	COUNTY	TOTAL SHEETS	SHEET NO.
#FILE#	DRAWN - SGL	REVISED -				290	(2828B,D, ETC., 3031, IRS-6	COOK	185	124D
USER NAME = #USER#	CHECKED - FML	REVISED -				CONTRACT NO. 60653				
DATE = #DATE#	DATE - 12/2009	REVISED -	ILLINOIS FED. AID PROJECT							