

FOR INDEX OF SHEETS, SEE SHEET NO. 2.

TRAFFIC DATA

ADT = 204,600 VEHICLES
POSTED SPEED LIMIT = 55 MPH

PROJECT LOCATED IN THE
CITY OF CHICAGO

STATE OF ILLINOIS

DEPARTMENT OF TRANSPORTATION

DIVISION OF HIGHWAYS

**PROPOSED
HIGHWAY PLANS**

FAI-290 (EISENHOWER EXPRESSWAY)

SECTION (2828 [B, D] ETC., 3031.1)RS-6

PROJECT: ACIM-290-4(113)091

AUSTIN AVE. TO I-90/94

RESURFACING AND ROADWAY AND STRUCTURE REPAIRS

COOK COUNTY

C-91-494-09

NOTE: WHEREVER IN THESE PLANS
REFERENCE IS MADE TO "TOTAL
SHEETS 185" IT SHALL
MEAN 300.

F.A.I. RTE.	SECTION	COUNTY	TOTAL SHEETS	SHEET NO.
290		COOK	300	1
FED. ROAD DIST. NO.	ILLINOIS	CONTRACT NO. 60G53		

* 2828 B, D, ETC., 3031.DRS-6
* 300 + 21 = 321
* 327 + 1 = 328
* + 6 = 327
D-91-341-09



STATE OF ILLINOIS
DEPARTMENT OF TRANSPORTATION
DIVISION OF HIGHWAYS

SUBMITTED October 7 2009

Diana M. O'Keefe DEPUTY DIRECTOR OF HIGHWAYS, REGION ENGINEER

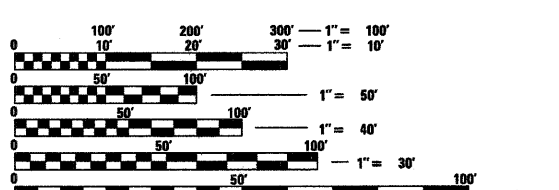
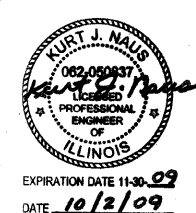
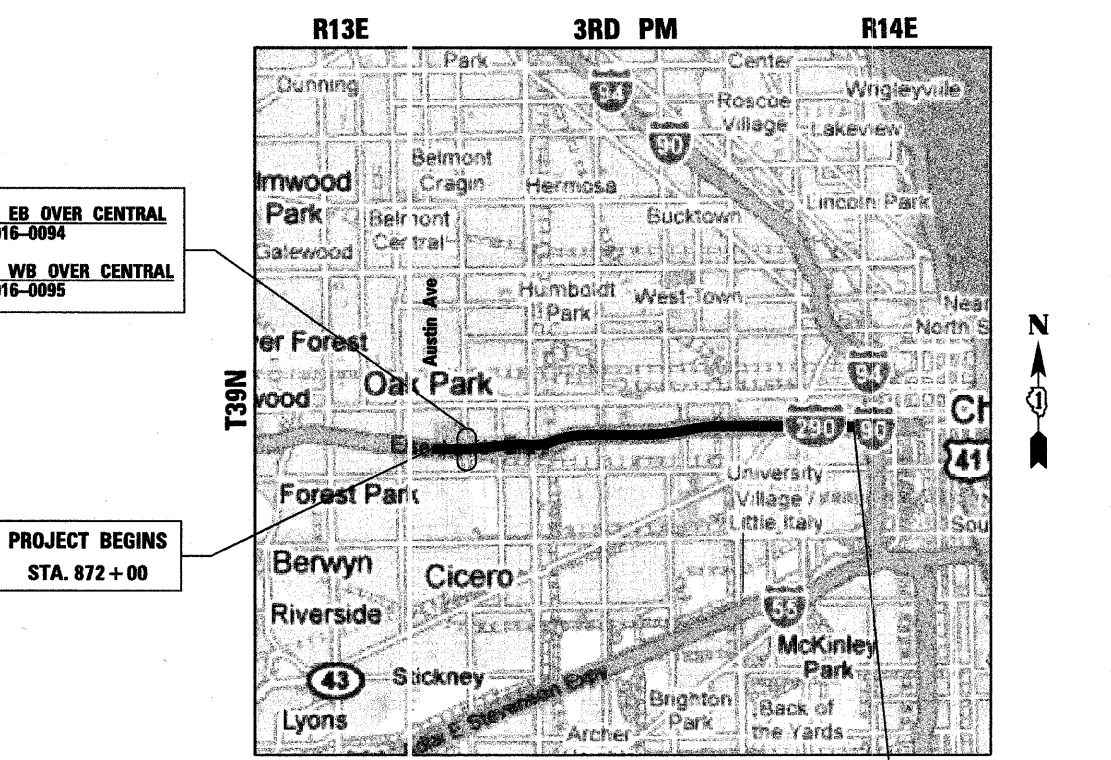
December 4, 2009
Charles J. Ingersoll ENGINEER OF DESIGN AND ENVIRONMENT

December 4, 2009
Christine M. Reed DIRECTOR OF HIGHWAYS, CHIEF ENGINEER

**PRINTED BY THE AUTHORITY
OF THE STATE OF ILLINOIS**

benesch
alfred benesch & company
Engineers • Surveyors • Planners
205 North Michigan Avenue, Suite 2400
Chicago, Illinois 60601
312-565-0450

Rev. 1-B-10
Rev. 1-4-10



FULL SIZE PLANS HAVE BEEN PREPARED USING STANDARD
ENGINEERING SCALES. REDUCED SIZED PLANS WILL NOT
CONFORM TO STANDARD SCALES. IN MAKING MEASUREMENTS
ON REDUCED PLANS, THE ABOVE SCALES MAY BE USED.

C.U.A.N.
CHICAGO UTILITY AREA NETWORK
1-312-744-7000
OR 811

PROJECT ENGINEER: CRAIG BAUER (847) 705-4265
PROJECT MANAGER: LONG TRAN (847) 705-4232

CONTRACT NO. 60G53

GROSS LENGTH OF PROJECT = 34,315 LIN FT = 6.50 MILES
NET LENGTH OF PROJECT = 34,315 LIN FT = 6.50 MILES