






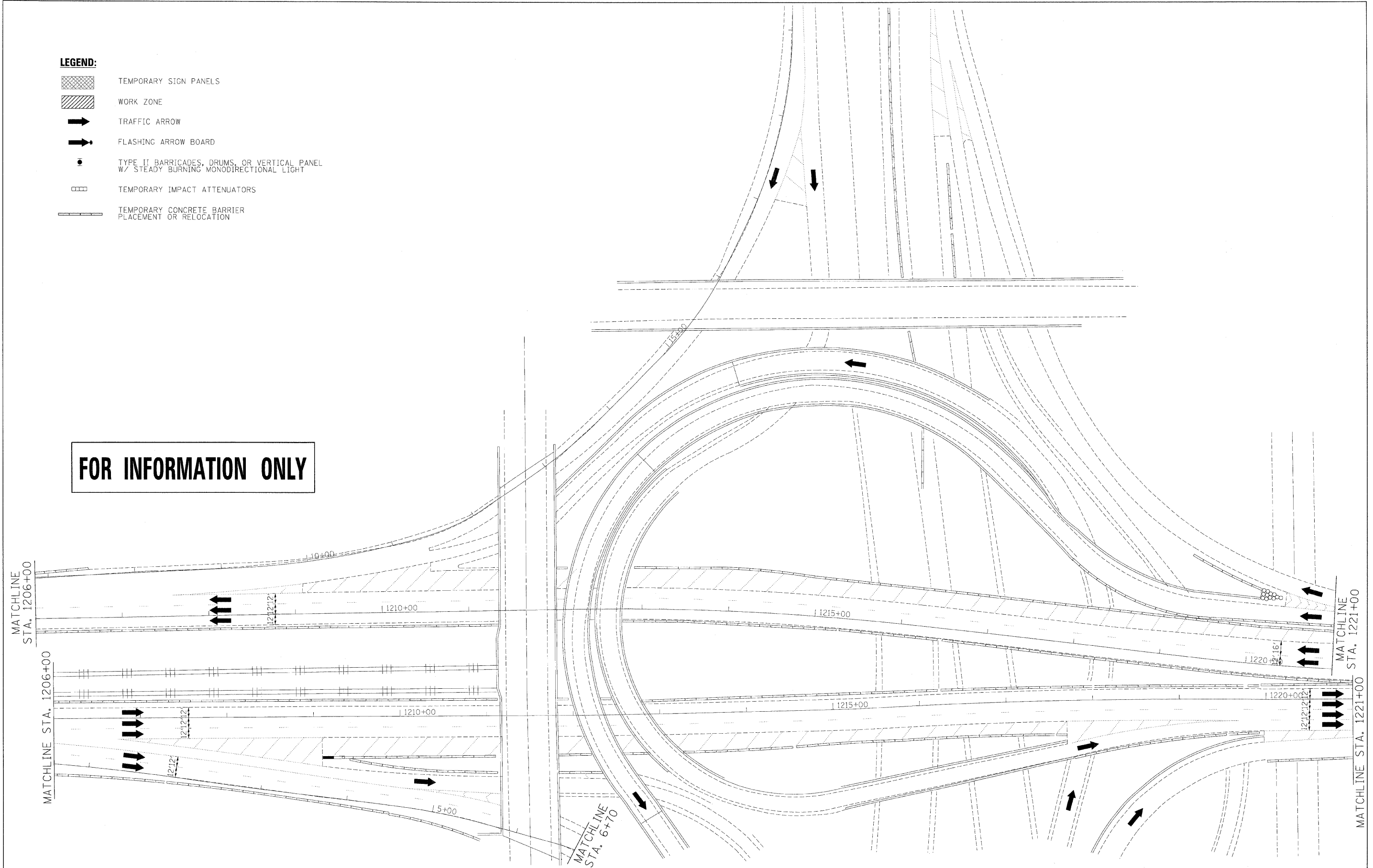


LEGEND:

-  TEMPORARY SIGN PANELS
-  WORK ZONE
-  TRAFFIC ARROW
-  FLASHING ARROW BOARD
-  TYPE II BARRICADES, DRUMS, OR VERTICAL PANEL W/ STEADY BURNING MONODIRECTIONAL LIGHT
-  TEMPORARY IMPACT ATTENUATORS
-  TEMPORARY CONCRETE BARRIER PLACEMENT OR RELOCATION

FOR INFORMATION ONLY



| | | |
|---------------------------------------|-----------------|-----------|
| FILE NAME = | DESIGNED - AJP | REVISED - |
| ...\\p121n_abc_c3_240_mot_s1_2_24.dgn | DRAWN - TMB | REVISED - |
| USER NAME = tblank | CHECKED - JJT | REVISED - |
| PLOT DATE = 11/13/2009 | DATE - 10/16/09 | REVISED - |

benesch

STATE OF ILLINOIS
DEPARTMENT OF TRANSPORTATION

MAINTENANCE OF TRAFFIC
PLAN - STAGE 2

SCALE: 1"=50' SHEET NO. 19 OF 28 SHEETS STA. TO STA.

| F.A.I. RTE. | SECTION | COUNTY | TOTAL SHEETS | SHEET NO. |
|---|----------------------------|--------|--------------------|-----------|
| 290 | 12828B,D, ETC., 3031.1RS-6 | COOK | 185 | 91 |
| FED. ROAD DIST. NO. ILLINOIS FED. AID PROJECT | | | CONTRACT NO. 60G53 | |