

ROUTE	SECTION	COUNTY	TOTAL SHEETS	SHEET NUMBER
FAU 1321	0303 VB-I	COOK	21	1

FOR INDEX OF SHEETS SEE SHEET 2

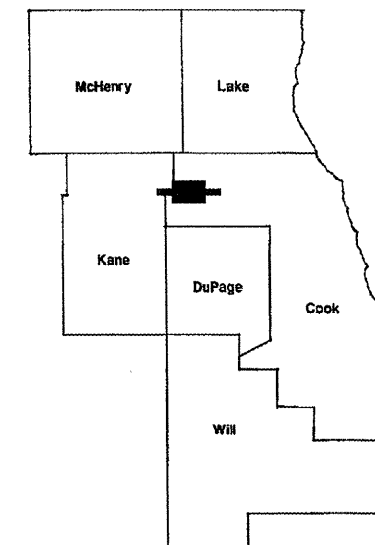
CONTRACT NO. 60H80

STATE OF ILLINOIS
DEPARTMENT OF TRANSPORTATION
DIVISION OF HIGHWAYS
DISTRICT ONE
PROPOSED HIGHWAY PLANS

FAU ROUTE 1321: IL 19 (IRVING PARK RD.)
 OVER EJ&E RR
 SECTION 0303 VB-I
 BRIDGE REPAIR
 COOK COUNTY
 C-91-816-09
 SN 016-0948

**IMPROVEMENT IS LOCATED IN
 THE VILLAGES OF
 STREAMWOOD & BARTLETT
 AND THE CITY OF ELGIN**

D-91-816-09

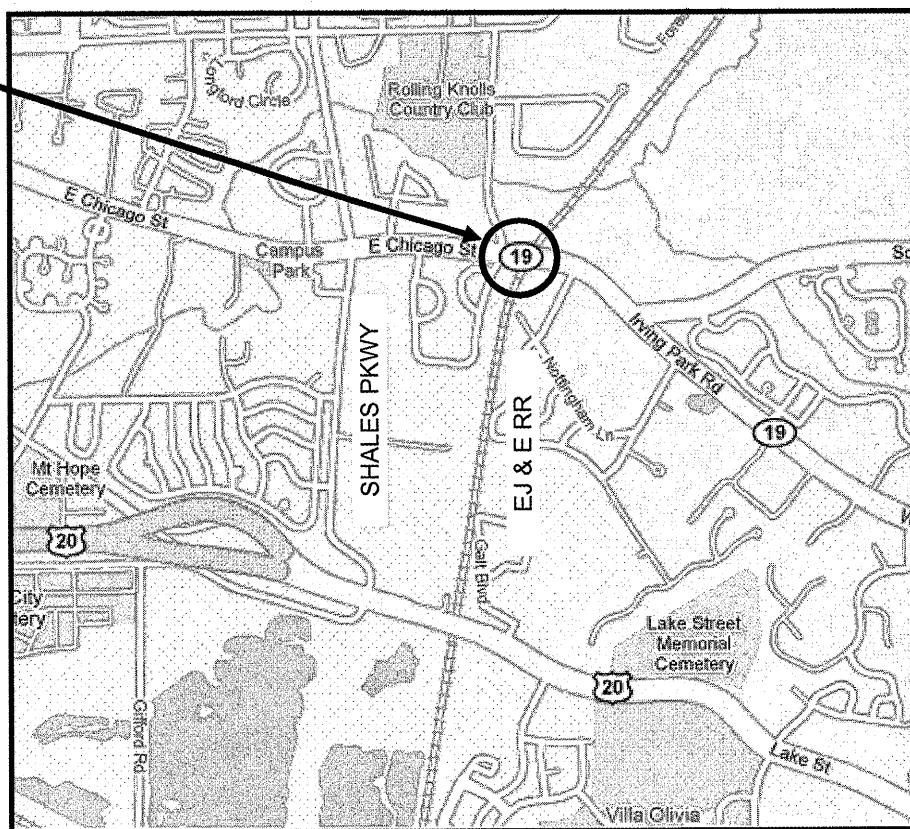


LOCATION OF IMPROVEMENT INDICATED THUS:

**LOCATION OF
 IMPROVEMENT**

TRAFFIC DATA:

POSTED SPEED LIMIT = 45 MPH
 2007 ADT = 12700



HANOVER TOWNSHIP

PROJECT ENGINEER ROBERT BORO (847) 705-4178
PROJECT MANAGER KEN ENG

CONTRACT NO. 60H80

STATE OF ILLINOIS
DEPARTMENT OF TRANSPORTATION
DIVISION OF HIGHWAYS
 SUBMITTED: OCTOBER 23, 2009
Diane M. O'Keefe or
 DEPUTY DIRECTOR OF HIGHWAYS, REGION ENGINEER
December 4, 2009
Charles J. Ingersoll
 ENGINEER OF DESIGN AND ENVIRONMENT
December 4, 2009
Christine M. Reed
 DIRECTOR, DIVISION OF HIGHWAYS

**PRINTED BY THE AUTHORITY
 OF THE STATE OF ILLINOIS**

J.U.L.I.E.: JOINT UTILITY LOCATION
 INFORMATION FOR EXCAVATION
 (800) 892-0123 OR 811

ROUTE	SECTION	COUNTY	TOTAL SHEETS	SHEET NUMBER
FAU 1321	0303 VB-I	COOK	21	2

CONTRACT NO: 60H80

INDEX OF SHEETS

STATE STANDARDS

1	TITLE SHEET
2	INDEX OF SHEETS AND STATE STANDARDS
3	GENERAL NOTES
4 & 5	SUMMARY OF QUANTITIES
6	RESURFACING AND PAVEMENT MARKING PLAN
7-13	BRIDGE REPAIR PLAN SHEETS
14	STANDARD 2382 - BRIDGE APPROACH PAVEMENT DETAIL
15	DETOUR PLANS
16-17	TEMPORARY TRAFFIC SIGNAL PLAN CONDITIONS FOR DETOUR
18	BUTT JOINT AND HMA TAPER DETAILS (BD-32)
19	RAISED REFLECTIVE PAVEMENT MARKERS (SNOW PLOW RESISTANT) (TC-11)
20	DISTRICT ONE TYPICAL PAVEMENT MARKINGS (TC-13)
21	ARTERIAL ROAD INFORMATION SIGN (TC-22)

STANDARD NO	DESCRIPTION
442201-03	CLASS D PATCH
701301-03	LANE CLOSURE, 2L, 2W, SHORT TIME OPERATIONS
701502-03	URBAN LANE CLOSURE, 2L, 2W, WITH BIDIRECTIONAL LEFT TURN LANE
701901-01	TRAFFIC CONTROL DEVICES

ILLINOIS DEPARTMENT OF TRANSPORTATION

INDEX OF SHEETS
STATE STANDARDS

ROUTE	SECTION	COUNTY	TOTAL SHEETS	SHEET NUMBER
FAU 1321	0303 VB-I	COOK	21	3

CONTRACT NO. 60H80

GENERAL NOTES

BEFORE STARTING ANY EXCAVATION, THE CONTRACTOR SHALL CALL J.U.L.I.E. AT (800) 892-0123 OR 811 FOR FIELD LOCATIONS OF BURIED ELECTRIC, TELEPHONE AND GAS UTILITIES (48 HOURS NOTIFICATION IS REQUIRED).

THE CONTRACTOR SHALL COORDINATE CONSTRUCTION ACTIVITIES WITH UTILITY COMPANIES, VILLAGES OF STREAMWOOD & BARTLETT, CITY OF ELGIN.

IT SHALL BE THE CONTRACTOR'S RESPONSIBILITY TO VERIFY ALL DIMENSIONS & CONDITIONS EXISTING IN THE FIELD PRIOR TO CONSTRUCTION & ORDERING OF MATERIALS.

THE CONTRACTOR WILL NOT BE ALLOWED TO SET UP A YARD OR FIELD OFFICE ON STATE PROPERTY WITHOUT WRITTEN PERMISSION FROM THE DEPARTMENT.

ALL DAMAGE TO EXISTING PAVEMENT MARKINGS OR RAISED REFLECTIVE PAVEMENT MARKERS OUTSIDE THE REMOVAL LINE SHOWN ON THE PLANS SHALL BE REPLACED AT NO ADDITIONAL COST TO THE DEPARTMENT.

BEFORE BEGINNING ANY WORK, THE CONTRACTOR SHALL RETAIN AND RECORD FOR FUTURE REFERENCE, ALL EXISTING PAVEMENT MARKING LINES (AND RAISED REFLECTIVE PAVEMENT MARKERS) IN ORDER THAT THESE LOCATIONS CAN BE RE-ESTABLISHED FOR STRIPING. EXACT LOCATIONS OF ALL PAVEMENT MARKINGS SHALL BE AS DIRECTED BY THE ENGINEER.

THE CONTRACTOR SHALL CONTACT THE DISTRICT ONE TRAFFIC CONTROL SUPERVISOR AT (847) 705-4470 A MINIMUM OF 72 HOURS IN ADVANCE OF BEGINNING WORK.

THE ENGINEER SHALL CONTACT WALLY CZARNY, AREA TRAFFIC FIELD ENGINEER, AT (773) 685-8386 A MINIMUM OF TWO (2) WEEKS PRIOR TO THE PLACEMENT OF PERMANENT PAVEMENT MARKINGS.

THE CONTRACTOR SHALL BE REQUIRED TO PROVIDE ACCESS TO ABUTTING PROPERTY AT ALL TIMES DURING THE CONSTRUCTION OF THIS PROJECT.

DO NOT SCALE PLANS FOR CONSTRUCTION DIMENSIONS.

DOUBLE LANE MARKERS ARE TO BE USED AS SHOWN ON THE DISTRICT ONE DETAIL "TYPICAL APPLICATIONS – RAISED REFLECTIVE PAVEMENT MARKERS (SNOW-PLOW RESISTANT)" SHOWN IN THE PLANS.

THE CONTRACTOR SHALL BE RESPONSIBLE FOR THE NOTIFICATION OF ALL EMERGENCY SERVICES, SCHOOL DISTRICTS, I.D.O.T.'S COMMUNICATIONS CENTER, SPRINGFIELD TRUCK PERMIT SECTION AND OTHER AGENCIES AFFECTED BY THE CLOSURE. THE CONTRACTOR SHALL ALSO BE RESPONSIBLE FOR POSTING SIGNS THAT WILL INDICATE THE DATES THE CLOSURE WILL BE IN PLACE.

THESE PLANS HAVE BEEN PREPARED FROM NOTES RECEIVED FROM BRIDGE INSPECTORS.

ILLINOIS DEPARTMENT OF TRANSPORTATION

GENERAL NOTES

ROUTE	SECTION	COUNTY	TOTAL SHEETS	SHEET NUMBER
FAU 1321	0303 VB-I	COOK	21	4

CONTRACT NO.: 60H80

CONSTRUCTION TYPE CODE: SFTY - 2A *URBAN*

CODE NO.	ITEMS	UNITS	TOTAL QUANTITIES
40600982	HOT-MIX ASPHALT SURFACE REMOVAL - BUTT JOINT	SQ YD	320
40603335	HOT-MIX ASPHALT SURFACE COURSE, MIX "D", N50	TON	45
44201809	CLASS D PATCHES, TYPE IV, 13 INCH	SQ YD	34
50102400	CONCRETE REMOVAL	CU YD	16
50157300	PROTECTIVE SHIELD	SQ YD	101
50300255	CONCRETE SUPERSTRUCTURE	CU YD	18
50300260	BRIDGE DECK GROOVING	SQ YD	683
50300300	PROTECTIVE COAT	SQ YD	727
50800205	REINFORCEMENT BARS, EPOXY COATED	POUND	2100
52000110	PREFORMED JOINT STRIP SEAL	FOOT	103
67000400	ENGINEER'S FIELD OFFICE, TYPE A	CAL MO	3
67100100	MOBILIZATION	L SUM	1
70102550	TRAFFIC CONTROL AND PROTECTION FOR TEMPORARY DETOUR	EACH	1
70102622	TRAFFIC CONTROL AND PROTECTION, STANDARD 701502	L SUM	1
70106800	CHANGEABLE MESSAGE SIGN	CAL MO	1
* 78008200	POLYUREA PAVEMENT MARKING TYPE I - LETTERS AND SYMBOLS	SQ FT	20.8
* 78008210	POLYUREA PAVEMENT MARKING TYPE I - LINE 4"	FOOT	1781
* 78008230	POLYUREA PAVEMENT MARKING TYPE I - LINE 6"	FOOT	50

** Specialty Items*

ILLINOIS DEPARTMENT OF TRANSPORTATION

SUMMARY OF QUANTITIES

ROUTE	SECTION	COUNTY	TOTAL SHEETS	SHEET NUMBER
FAU 1321	0303 VB-I	COOK	21	5

CONTRACT NO.: 60H80

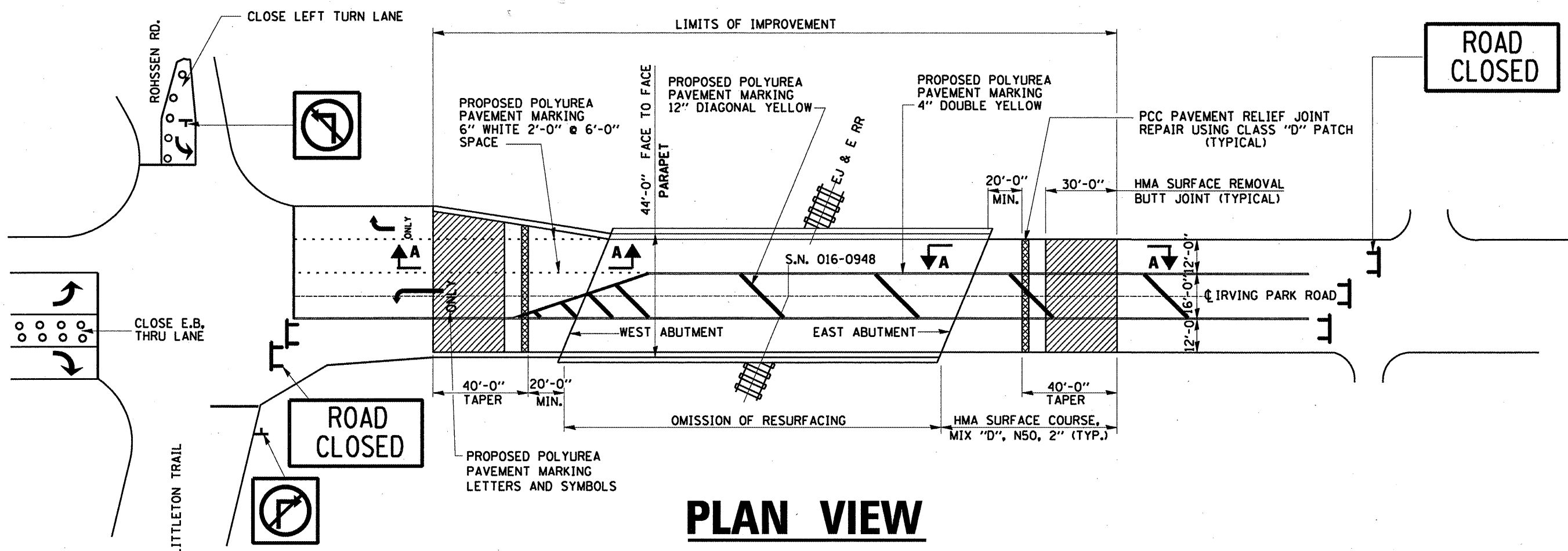
CONSTRUCTION TYPE CODE: SFTY - 2A *URBAN*

CODE NO.	ITEMS	UNITS	TOTAL QUANTITIES
* 78008250	POLYUREA PAVEMENT MARKING TYPE I - LINE 12"	FOOT	90
* 78100105	RAISED REFLECTIVE PAVEMENT MARKER (BRIDGE)	EACH	21
78300200	RAISED REFLECTIVE PAVEMENT MARKER REMOVAL	EACH	21
* 85000200	MAINTENANCE OF EXISTING TRAFFIC SIGNAL INSTALLATION	EACH	1
* 88600600	DETECTOR LOOP REPLACEMENT	FOOT	56
X0322256	TEMPORARY INFORMATION SIGNING	SQ FT	51.4
X0322489	BRIDGE DECK LATEX CONCRETE OVERLAY, 2 1/2 INCHES	SQ YD	695
X0325305	STRUCTURAL REPAIR OF CONCRETE (DEPTH EQUAL TO OR LESS THAN 5 INCHES)	SQ FT	437
Z0001700	APPROACH SLAB REPAIR (FULL DEPTH)	SQ YD	10
Z0001800	APPROACH SLAB REPAIR (PARTIAL DEPTH)	SQ YD	10
Z0006204	BRIDGE DECK HYDRO-SCARIFICATION 1/2"	SQ YD	695
Z0016002	DECK SLAB REPAIR (FULL DEPTH, TYPE II)	SQ YD	16
Z0048665	RAILROAD PROTECTIVE LIABILITY INSURANCE	L SUM	1

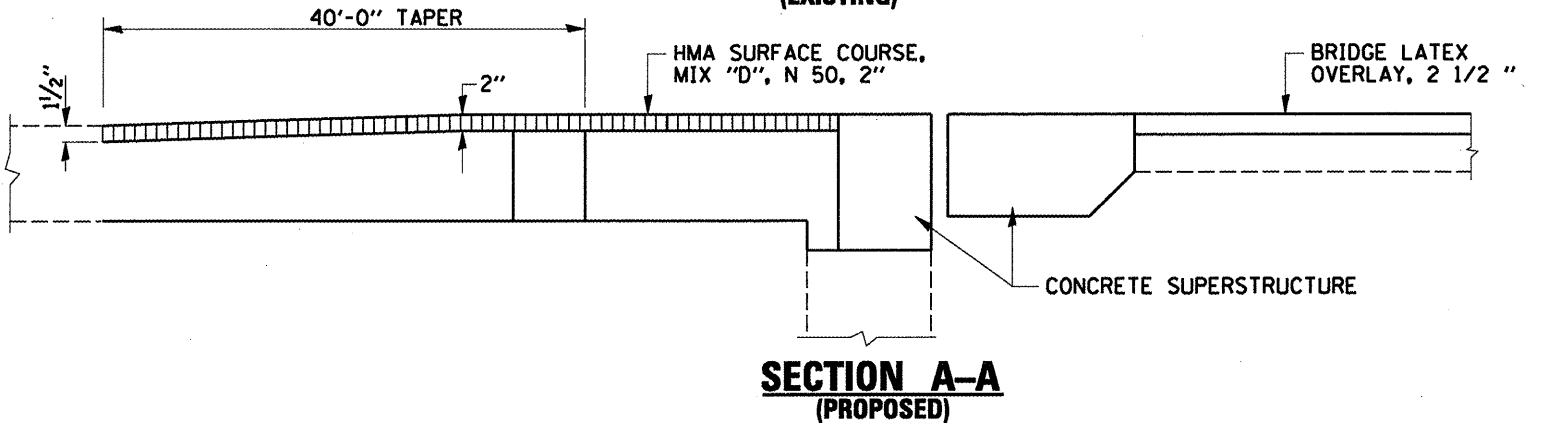
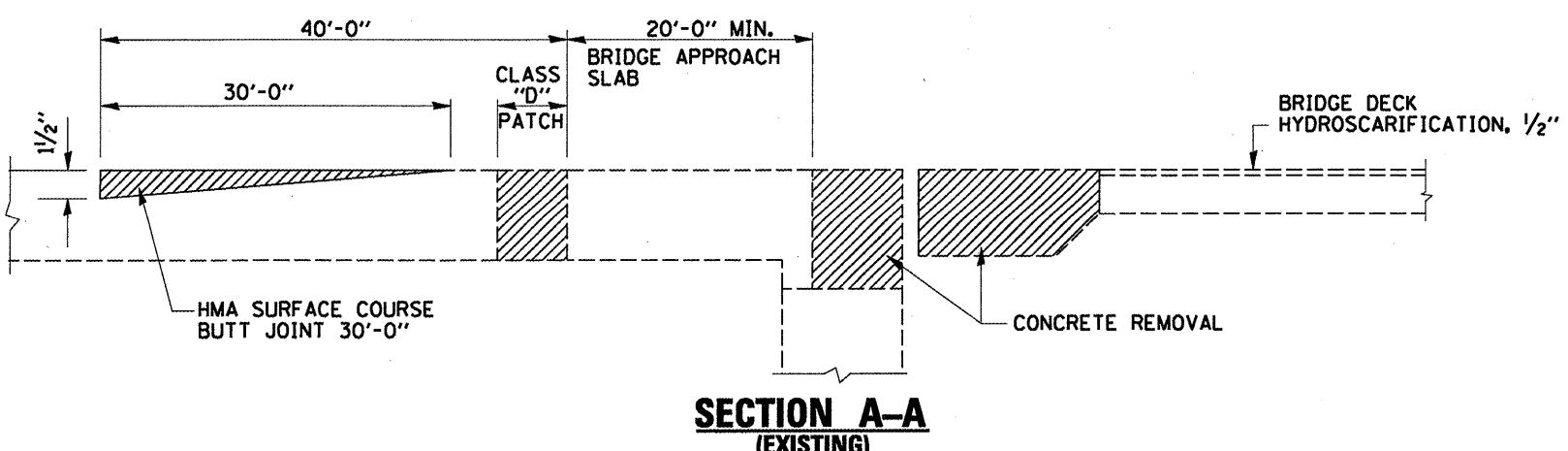
**Specialty Items*

ILLINOIS DEPARTMENT OF TRANSPORTATION

SUMMARY OF QUANTITIES



PLAN VIEW

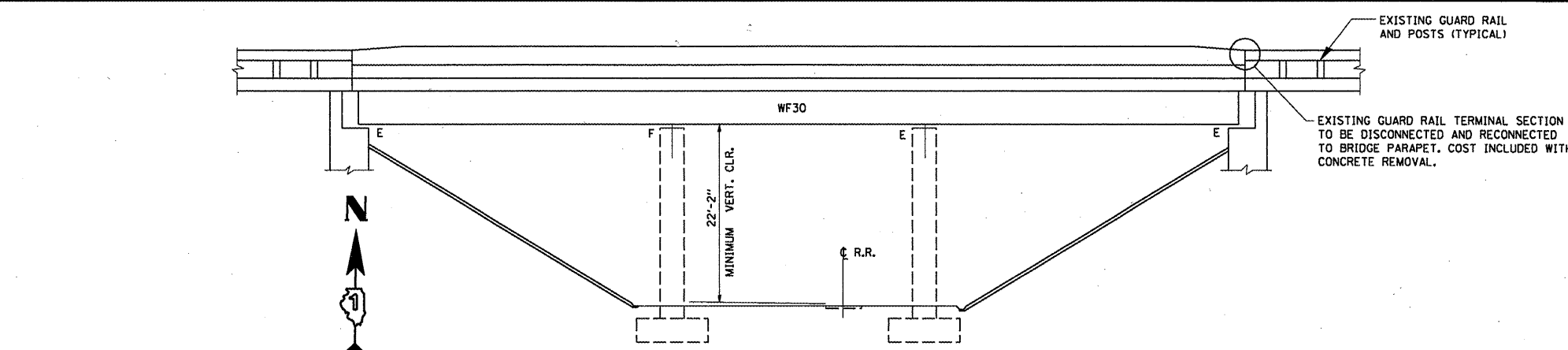


HMA MIXTURE REQUIREMENTS	
MIXTURE TYPE	AIR VOIDS @ Ndes
HMA SURFACE COURSE, MIX "D", N 50 (IL-9.5 mm)	4 % @ 50 GYR
CLASS "D" PATCH (HMA BINDER IL-19 mm)	4 % @ 70 GYR

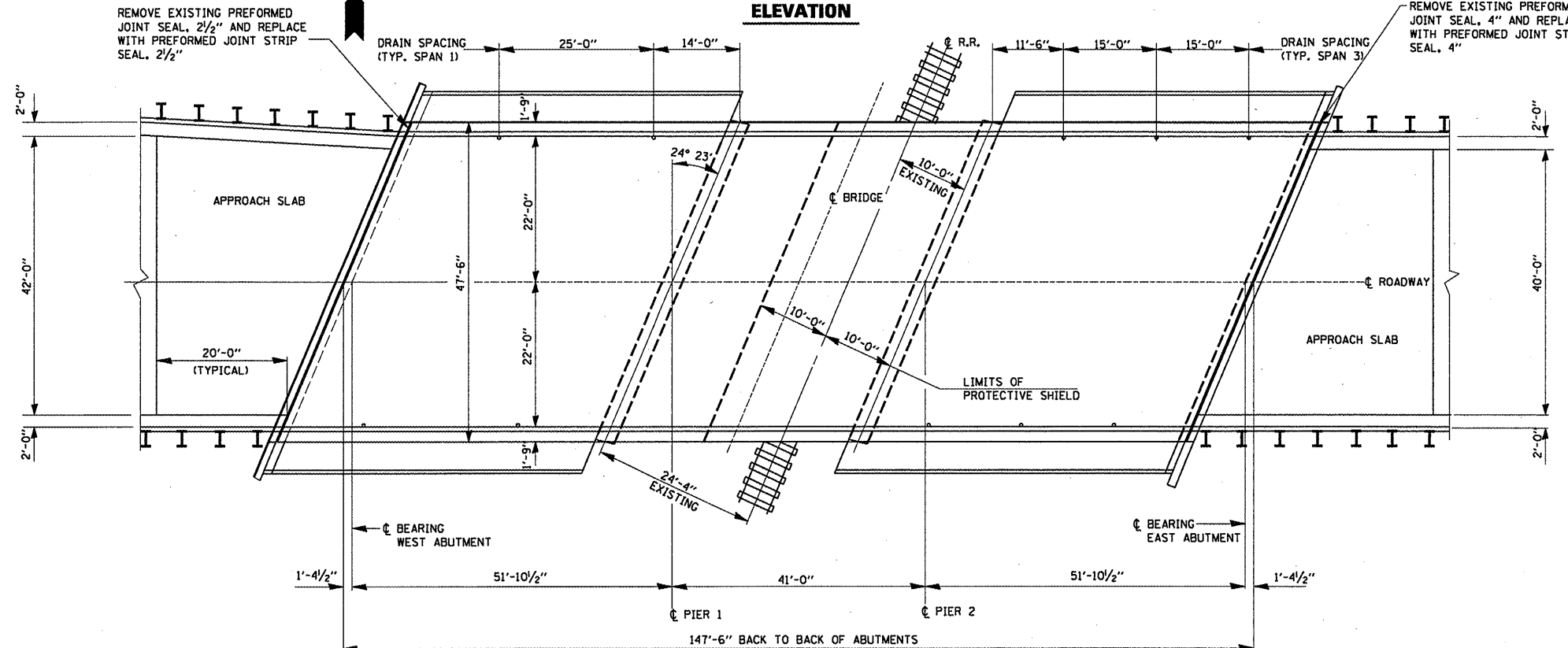
NOTE:

THE UNIT WEIGHT USED TO CALCULATE ALL HMA SURFACE MIX QUANTITIES IS 112 LBS/SQ.YD./IN.
 THE "AC TYPE" FOR POLYMERIZED HMA MIXES SHALL BE "SBS/SBR PG 70-22" AND FOR NON-POLYMERIZED HMA THE "AC TYPE" SHALL BE "PG 64-22" UNLESS MODIFIED BY DISTRICT ONE SPECIAL PROVISIONS.
 FOR "PERCENT OF RAP" SEE DISTRICT ONE SPECIAL PROVISIONS.
 THE CONTRACTOR SHALL PATCH AND REPAIR THE BRIDGE APPROACH SLAB BEFORE RESURFACING. SEE "APPROACH SLAB REPAIR DETAILS".

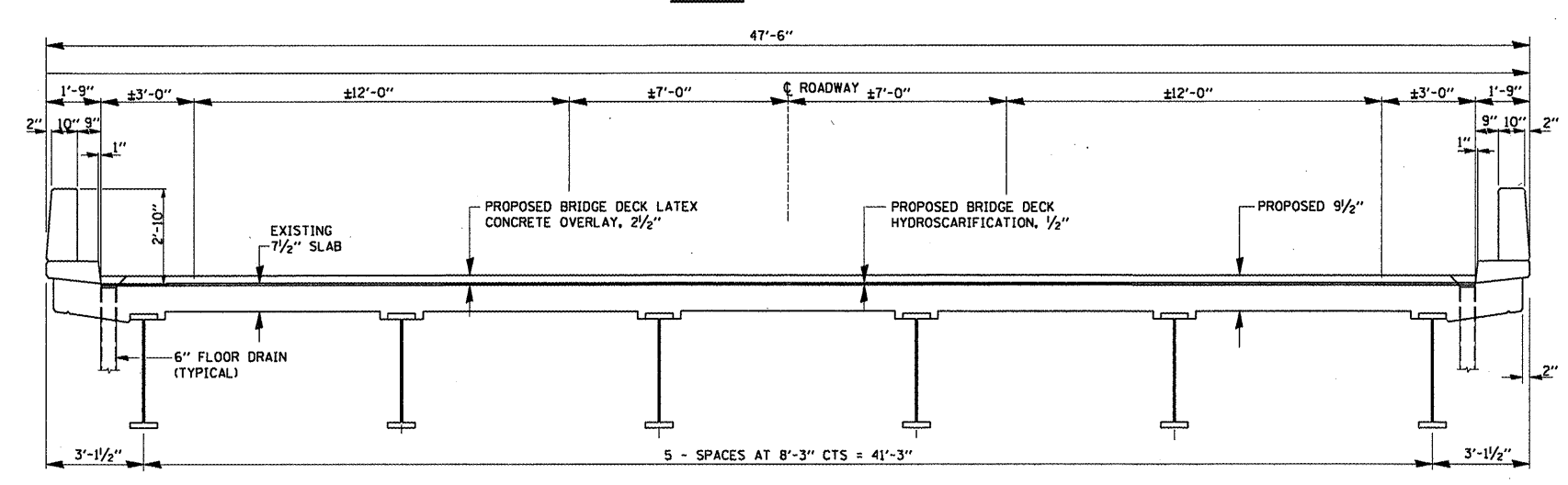
FILE NAME =	USER NAME = t3n1akosmv	DESIGNED -	REVISED -	STATE OF ILLINOIS DEPARTMENT OF TRANSPORTATION	IL 19 (IRVING PARK ROAD) OVER EJ & E RR RESURFACING AND PAVEMENT MARKING PLAN S.N. 016-0948	F.A.U. RTE. 1321	SECTION 0303 VB-1	COUNTY COOK	TOTAL SHEETS 21	SHEET NO. 6	
at\pwwork\pww\DOT\TINIAKOSMV\d0101671\016-0948.dgn	PLOT SCALE = 1/8" = 1'-0" IN.	DRAWN -	REVISED -			SCALE:	SHEET NO. OF SHEETS STA. TO STA.	CONTRACT NO. 60H80			
PLOT DATE = 11/4/2009	DATE -	CHECKED -	REVISED -			ILLINOIS FED. AID PROJECT					
		DATE -	REVISED -								



ELEVATION



PLAN



**CROSS SECTION
(LOOKING EAST)**

GENERAL NOTES:

PLAN DIMENSIONS AND DETAILS RELATIVE TO EXISTING PLANS ARE SUBJECT TO NOMINAL CONSTRUCTION VARIATIONS. THE CONTRACTOR SHALL FIELD VERIFY EXISTING DIMENSIONS AND DETAILS AFFECTING NEW CONSTRUCTION AND MAKE NECESSARY APPROVED ADJUSTMENT PRIOR TO CONSTRUCTION OR ORDERING OF MATERIALS. SUCH VARIATIONS SHALL NOT BE CAUSE FOR ADDITIONAL COMPENSATION FOR A CHANGE IN SCOPE OF THE WORK, HOWEVER, THE CONTRACTOR WILL BE PAID FOR THE QUANTITY ACTUALLY FURNISHED BASED AT THE UNIT PRICE BID FOR THE WORK.

ALL STRUCTURAL STEEL SHALL CONFORM TO AASHTO CLASSIFICATION M-270 GR. 36, UNLESS OTHERWISE NOTED.

REINFORCEMENT BARS DESIGNATED (E) SHALL BE EPOXY COATED.

EXISTING REINFORCEMENT BARS EXTENDING INTO THE REMOVAL AREA SHALL BE CLEANED, STRAIGHTENED AND INCORPORATED INTO THE NEW CONSTRUCTION. ANY REINFORCEMENT BARS THAT ARE DAMAGED DURING CONCRETE REMOVAL SHALL BE REPLACED WITH AN APPROVED BAR SPLICER OR ANCHORAGE SYSTEM. COST INCLUDED WITH CONCRETE REMOVAL.

AREA OF DECK REPAIRS SHOWN ARE ESTIMATED. THE ENGINEER SHALL SHOW ACTUAL LOCATIONS OF DECK REPAIRS ON AS-BUILT PLANS.

CONCRETE SUPERSTRUCTURE SHALL HAVE A SEVEN DAY MINIMUM CURE.

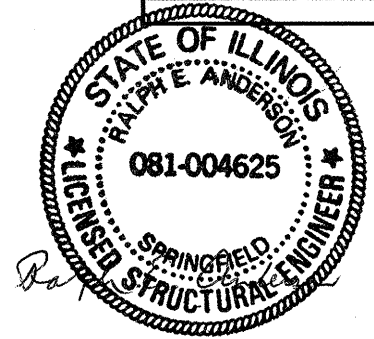
REINFORCEMENT BARS SHALL CONFORM TO THE REQUIREMENTS OF ASTM A 706 Gr 60. SEE SPECIAL PROVISIONS.

JOINT OPENINGS SHALL BE ADJUSTED ACCORDING TO ARTICLE 520.04 OF THE STANDARD SPECIFICATIONS, WHEN THE DECK IS POURED AT AN AMBIENT TEMPERATURE OTHER THAN 50° F.

PRIOR TO POURING THE NEW CONCRETE DECK, ALL HEAVY OR LOOSE RUST, LOOSE MILL SCALE, AND OTHER LOOSE OR POTENTIALLY DETRIMENTAL FOREIGN MATERIAL SHALL BE REMOVED FROM THE SURFACES IN CONTACT WITH CONCRETE. TIGHTLY ADHERED PAINT MAY REMAIN UNLESS OTHERWISE NOTED. REMOVAL SHALL BE ACCOMPLISHED BY METHODS THAT WILL NOT DAMAGE THE STEEL AND THE COST WILL BE INCLUDED IN THE PAY ITEM COVERING REMOVAL OF THE EXISTING CONCRETE.

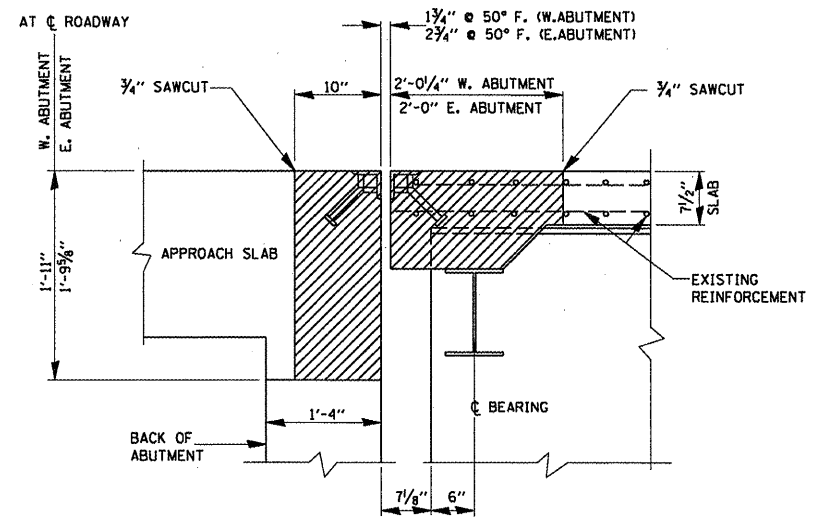
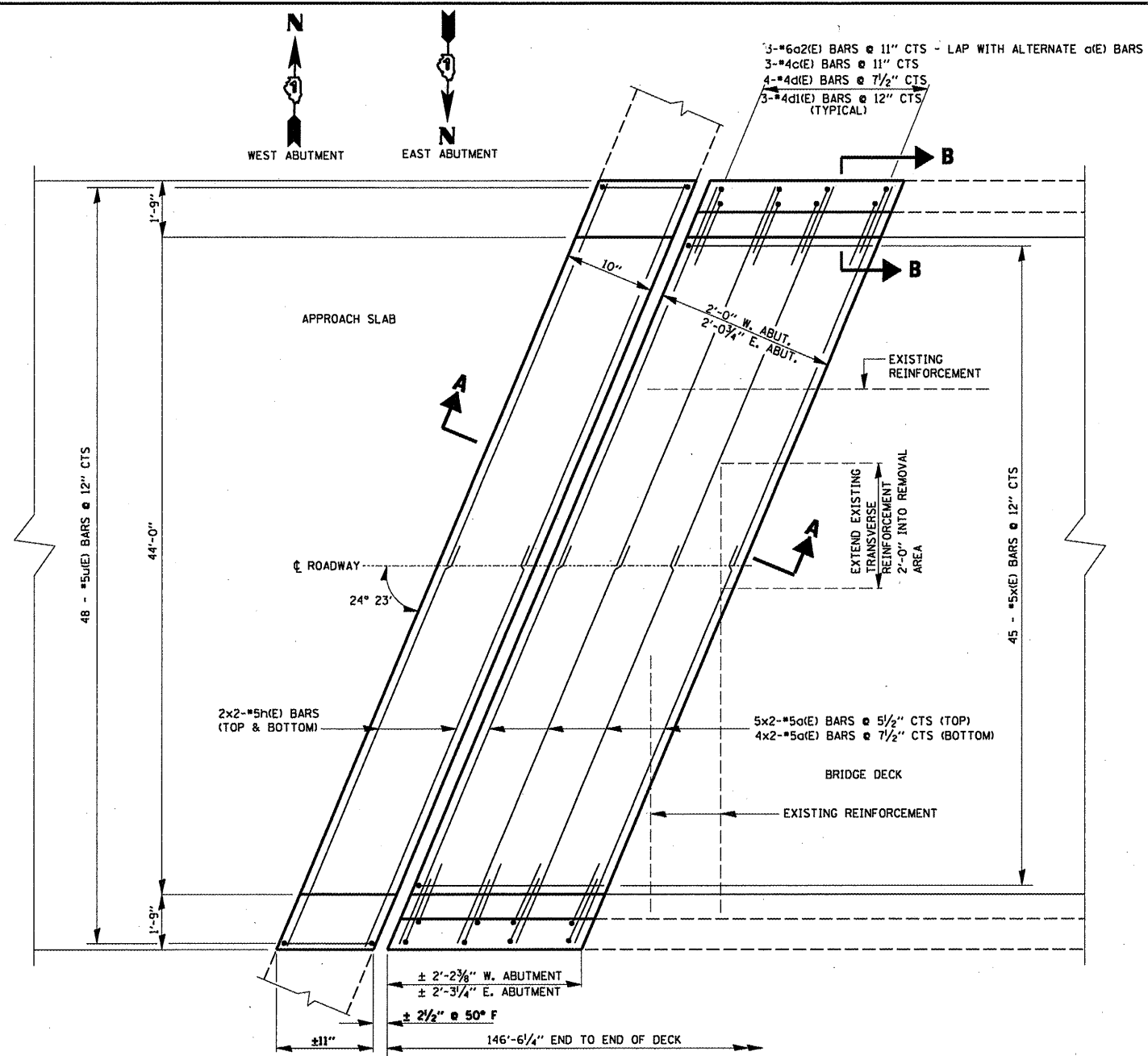
TOTAL BILL OF MATERIALS

ITEM	UNIT	QUANTITY
REINFORCEMENT BARS (EPOXY COATED)	POUND	2100
CONCRETE REMOVAL	CU. YD.	15.8
CONCRETE SUPERSTRUCTURE	CU. YD.	17.4
PREFORMED JOINT STRIP SEAL	FOOT	103
BRIDGE DECK LATEX CONCRETE OVERLAY, 2 1/2"	SQ. YD.	695
BRIDGE DECK HYDROSCARIFICATION, 1/2"	SQ. YD.	695
APPROACH SLAB REPAIR (PARTIAL)	SQ. YD.	10
APPROACH SLAB REPAIR (FULL DEPTH)	SQ. YD.	10
PROTECTIVE COAT	SQ. YD.	727
BRIDGE DECK GROOVING	SQ. YD.	683
PROTECTIVE SHIELD	SQ. YD.	101
DECK SLAB REPAIR (FULL DEPTH, TYPE II)	SQ. YD.	16
STRUCTURAL REPAIR OF CONCRETE (DEPTH < 5")	SQ. FT.	437

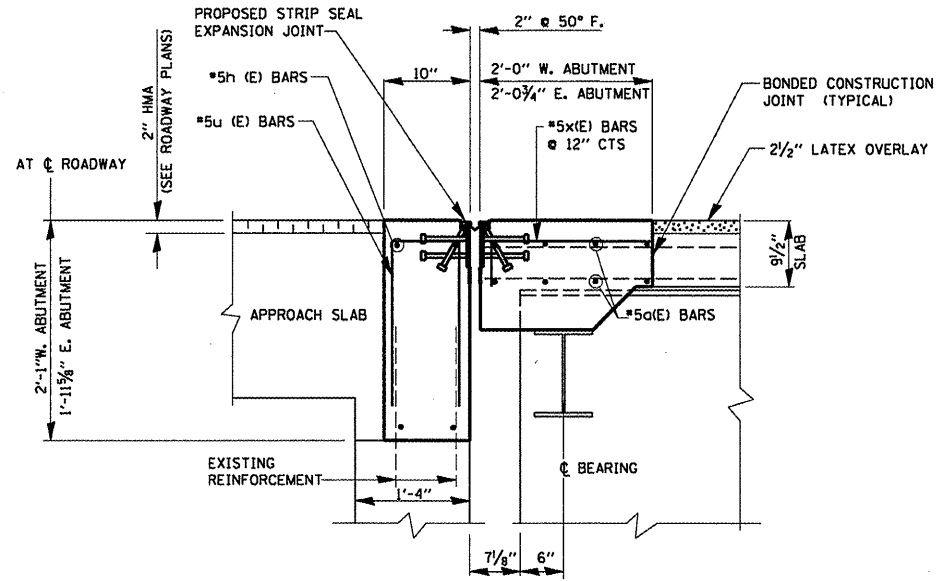


Expires Nov. 30, 2010

FILE NAME =	USER NAME = tnsiakosmv	DESIGNED - RTB	REVISED -	STATE OF ILLINOIS DEPARTMENT OF TRANSPORTATION	IL 19 (IRVING PARK ROAD) OVER EJ & E RR GENERAL PLAN, ELEVATION AND CROSS SECTION S.N. 016-0948	F.A.U. RTE. 1321	SECTION 0303 VB-1	COUNTY COOK	TOTAL SHEETS 21	SHEET NO. 7
CONTRACT NO. 60H80	ILLINOIS FED. AID PROJECT	SCALE:	SHEET NO. 1 OF 7 SHEETS			STA. TO STA.				
PLOT SCALE = 1/8" = 1' / IN.	CHECKED - MVT	REVISED -								
PLOT DATE = 11/5/2009	DATE = 11/4/09	REVISED -								



**SECTION A-A
(EXISTING)**



**SECTION A-A
(PROPOSED)**

BILL OF MATERIALS

BAR	NO.	SIZE	LENGTH	SHARE
a(E)	36	#5	27'-1"	---
a2(E)	12	#6	4'-0"	---
c(E)	12	#4	5'-5"	L
d(E)	12	#4	3'-4"	L
d1(E)	12	#4	2'-11"	L
h(E)	16	#5	27'-1"	---
u(E)	96	#5	2'-1"	□
x(E)	90	#5	2'-7"	□
REINFORCEMENT BARS (EPOXY COATED)		POUND	2100	
CONCRETE REMOVAL		CU.YD.	15.8	
CONCRETE SUPERSTRUCTURE		CU.YD.	17.4	

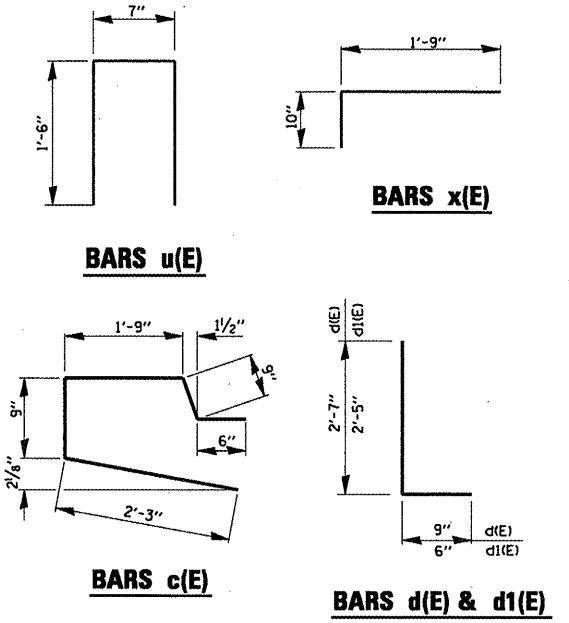
NOTE:
BARS INDICATED THUS 4x2 #5a(E) etc INDICATES 4 LINES OF BARS WITH 2 LENGTHS PER LINE

MINIMUM BAR LAP

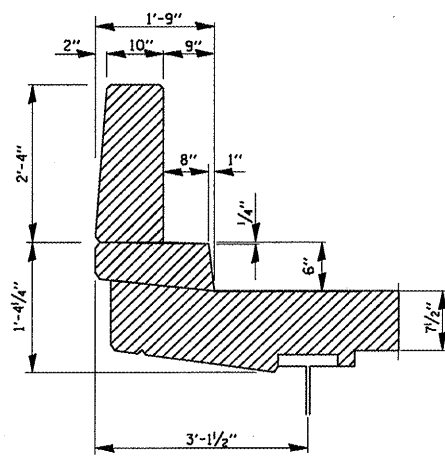
SIZE	LAP
#4	1'-8"
#5	2'-2"

LEGEND:

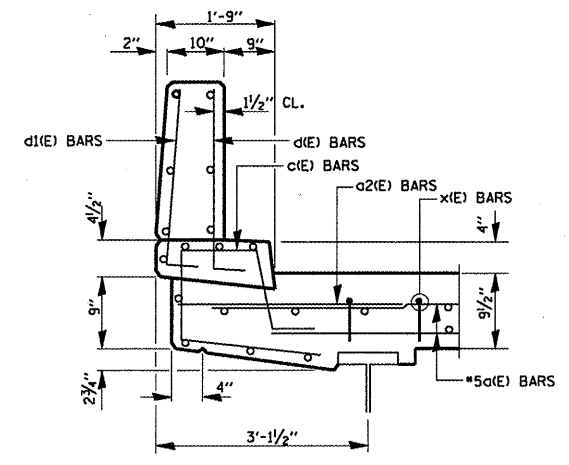
HATCHED AREA INDICATES CONCRETE REMOVAL



**EXPANSION JOINT PLAN
AT EAST AND WEST ABUTMENT**



**SECTION B-B
(EXISTING)**



**SECTION B-B
(PROPOSED)**

**STATE OF ILLINOIS
DEPARTMENT OF TRANSPORTATION**

**IL 19 (IRVING PARK ROAD) OVER EJ & E RR
TRANSVERSE EXPANSION JOINT DETAILS
S.N. 016-0948**

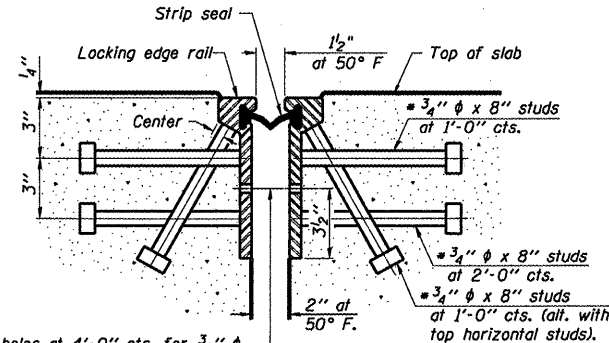
F.A.U. RTE.	SECTION	COUNTY	TOTAL SHEETS	SHEET NO.
1321	0303 VB-1	COOK	21	8

CONTRACT NO. 60H80
ILLINOIS FED. AID PROJECT

FILE NAME	USER NAME	DESIGNED	REVISED
016-0948.dgn	trniakosmv	RTB	-
		MVT	-
		MVT	-
			-

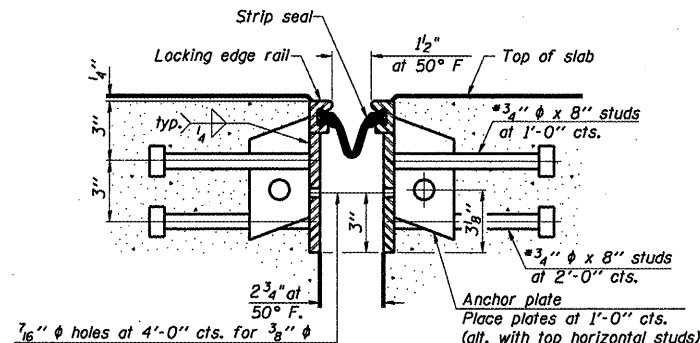
DATE - 11/4/09

Granular or solid flux filled headed studs conforming to Article 1006.32 of the Std. Specs., automatically end welded.



7/16 inch diameter holes at 4 foot 0 inch centers for 3/8 inch diameter bolts. All bolts shall be burned, sawed, or chipped off flush with the plates after forms are removed, typ.

SECTION THRU ROLLED RAIL JOINT



7/16 inch diameter holes at 4 foot 0 inch centers for 3/8 inch diameter bolts. All bolts shall be burned, sawed, or chipped off flush with the plates after forms are removed, typ.

SECTION THRU WELDED RAIL JOINT

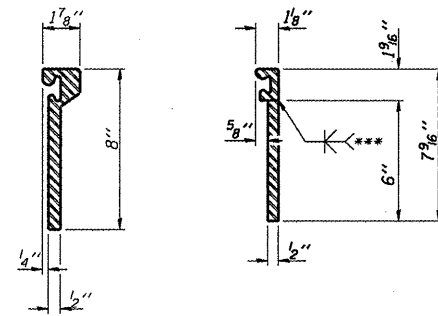
Notes:

The strip seal shall be made continuous and shall have a minimum thickness of 1/4 inch. The configuration of the strip seal shall match the configuration of the Locking Edge Rails. Open or "webbed" strip seal gland configurations are not permitted. The gland shall be sized for a maximum rated movement of 4 inches.

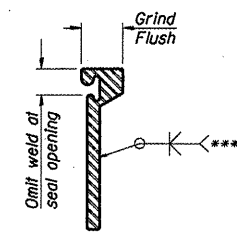
The height and thickness of the Locking Edge Rails shown are minimum dimensions. The actual configuration of the Locking Edge Rails and matching strip seal may vary from manufacturer to manufacturer. Flanged edge rails will not be allowed. Locking Edge Rails may be spliced at slope discontinuities and stage construction joints.

The manufacturer's recommended installation methods shall be followed. The joint opening and deck dimensions detailed on the superstructure are based on a rolled rail expansion joint. If the Contractor elects to use the welded rail expansion joint, the opening and deck dimensions shall be modified according to the dimensions detailed on this sheet. Required modifications shall be made at no additional cost to the State.

All steel components shall be galvanized after fabrication according to Article 520.03 of the Standard Specifications.



ROLLED EXTRUDED RAIL WELDED RAIL

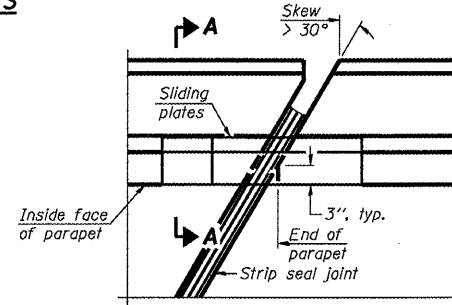


***Back gouge not required if complete joint penetration is verified by mock-up.

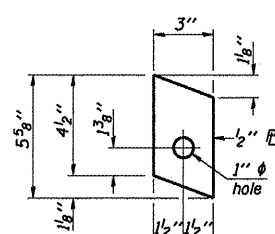
LOCKING EDGE RAIL SPLICE

The inside of the locking edge rail groove shall be free of weld residue.

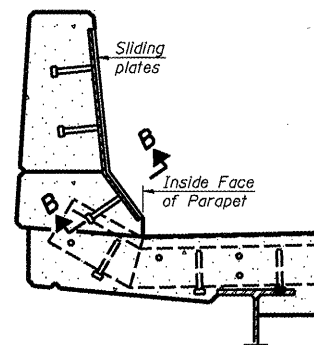
LOCKING EDGE RAILS



PLAN

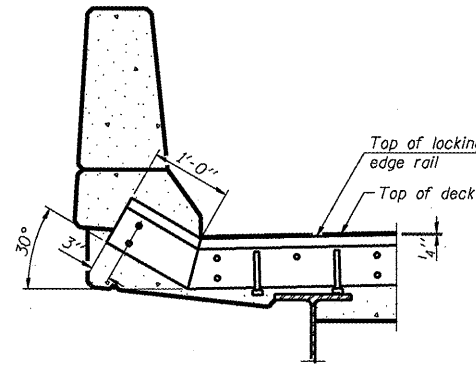


ANCHOR PLATE (for welded rail)

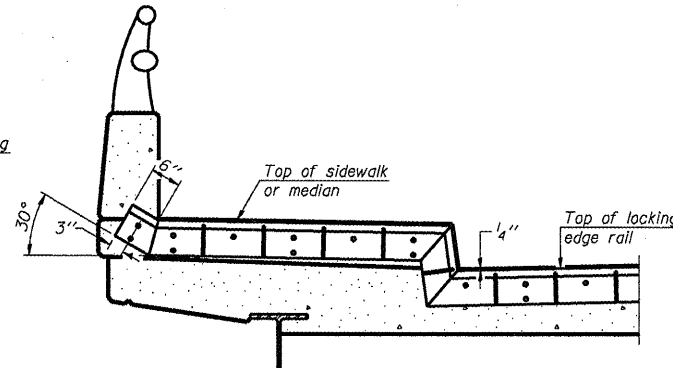


SECTION A-A

POINT BLOCK DETAILS (for skews > 30 degrees)



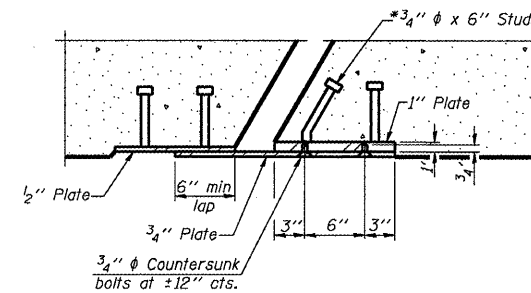
AT PARAPET



AT SIDEWALK OR MEDIAN

Shorter plates with a single row of studs at 12 inch centers may be necessary on medians which are shallower than 9 inches. See manufacturer's recommendation.

TYPICAL END TREATMENTS



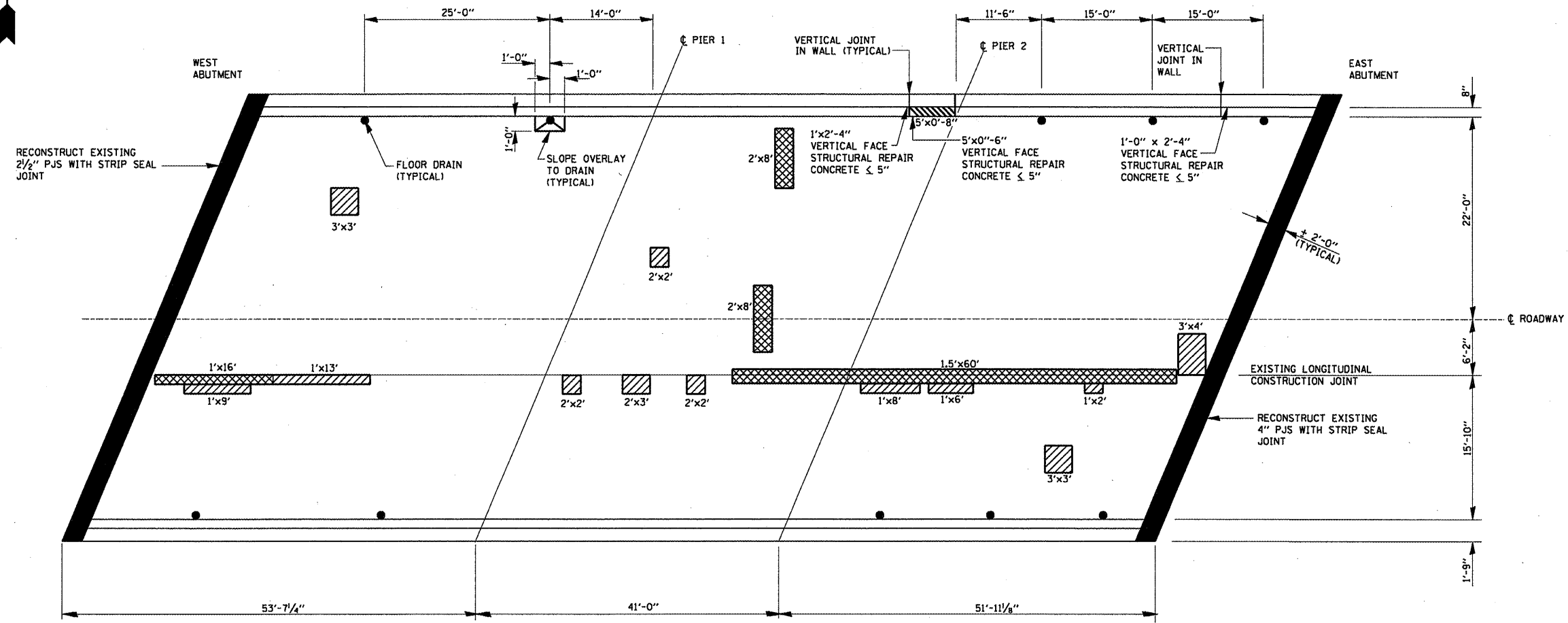
SECTION B-B

BILL OF MATERIAL

Item	Unit	Total
Preformed Joint Strip Seal	Foot	102

EJ-SSJ 10-1-08

FILE NAME =	USER NAME = ttniakosmv	DESIGNED - RTB	REVISED -	STATE OF ILLINOIS DEPARTMENT OF TRANSPORTATION	U.S. 30 OVER E.J. & E.R.R. PREFORMED JOINT STRIP SEAL S.N. 099-0264	F.A.U. RTE.	SECTION	COUNTY	TOTAL SHEETS	SHEET NO.
c:\p\work\p\WIDOT\TINI\AKOSMV\d0101671\01-0948.dgn	DRAWN - MVT	REVISED -	1321			0303 VB-1	COOK	21	9	
PLOT SCALE = 100.0000 / IN.	CHECKED - MVT	REVISED -	CONTRACT NO. 60H80							
PLOT DATE = 11/4/2009	DATE - 11/4/09	REVISED -	FED. ROAD DIST. NO. 1 [ILLINOIS] FED. AID PROJECT							
				SCALE: NONE	SHEET NO. 3 OF 7 SHEETS	STA.	TO STA.			



**PLAN
DECK REPAIRS**

LEGEND:

- DECK SLAB REPAIR (PARTIAL)
ESTIMATED QUANTITY = 10 SO.YD.
FOR INFORMATION ONLY
- DECK SLAB REPAIR
(FULL DEPTH)
- STRUCTURAL REPAIR OF
CONCRETE ≤ 5"
- CONCRETE REMOVAL AND
CONCRETE SUPERSTRUCTURE

BILL OF MATERIALS

ITEM	UNIT	QUANTITY
DECK SLAB REPAIR (FULL DEPTH TYPE II)	SO. YD.	16
STRUCTURAL REPAIR OF CONCRETE ≤ 5"	SO. FT.	11

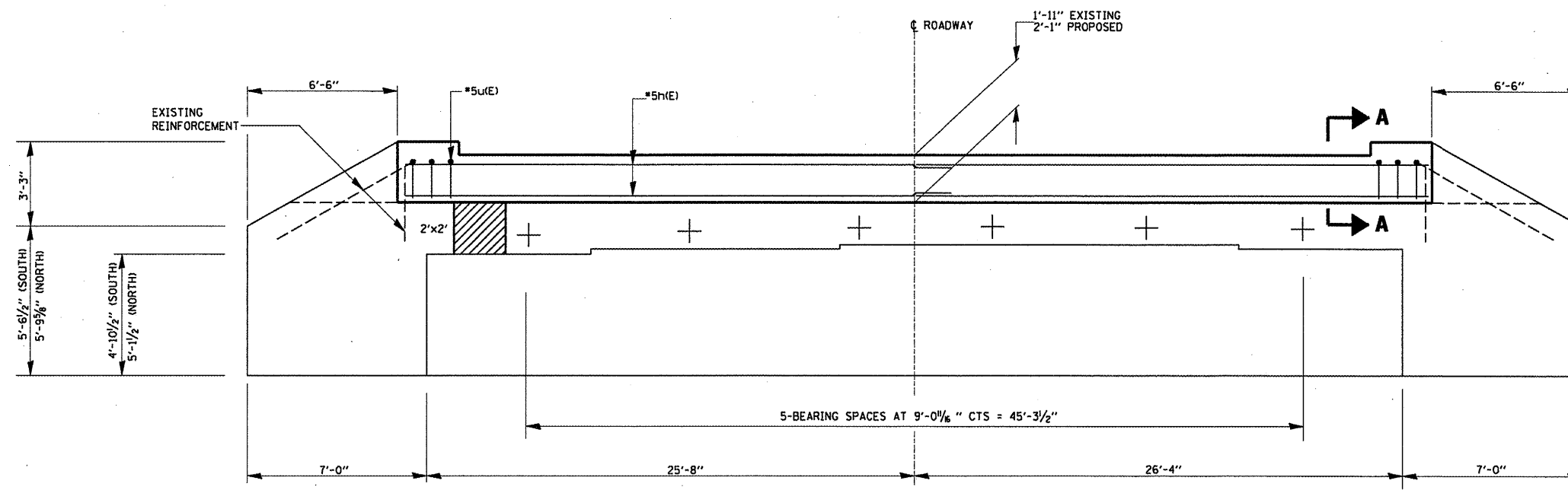
FILE NAME =	USER NAME = tsnakosmv	DESIGNED - RTB	REVISED -
019-0948.dgn	019-0948.dgn	DRAWN - MVT	REVISED -
	PLOT SCALE = 100.0000' / IN.	CHECKED - MVT	REVISED -
	PLOT DATE = 11/4/2009	DATE - 11/4/09	REVISED -

**STATE OF ILLINOIS
DEPARTMENT OF TRANSPORTATION**

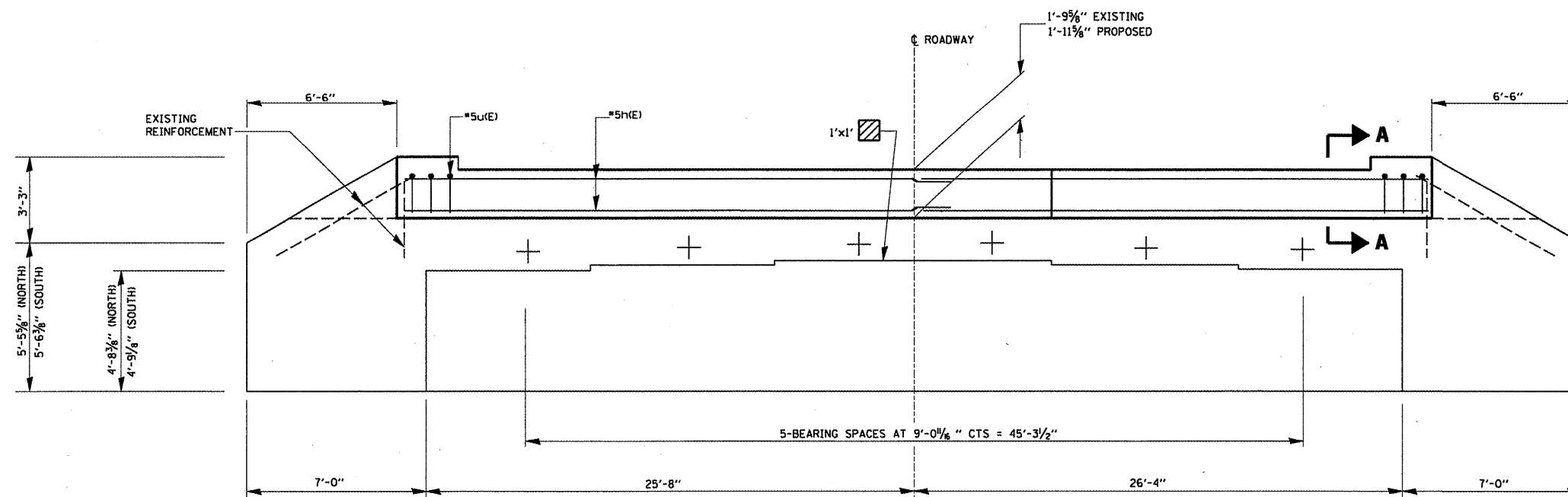
**IL 19 (IRVING PARK ROAD) OVER EJ & E RR
DECK REPAIR PLAN
S.N. 016-0948**

SCALE: SHEET NO. 4 OF 7 SHEETS STA. TO STA.

F.A.U. RTE.	SECTION	COUNTY	TOTAL SHEETS	SHEET NO.
1321	0303 VB-1	COOK	21	10
CONTRACT NO. 60H80				
ILLINOIS FED. AID PROJECT				



WEST ABUTMENT
(LOOKING WEST)



EAST ABUTMENT
(LOOKING EAST)

BILL OF MATERIALS

ITEM	UNIT	QUANTITY
STRUCTURAL REPAIR OF CONCRETE \leq 5"	SO. FT.	5

NOTE:

FOR QUANTITIES OF:
CONCRETE REMOVAL, CONCRETE SUPERSTRUCTURAL,
REINFORCEMENT BARS (EPOXY COATED) AND SECTION A-A
SEE SHEET 2 OF 7

LEGEND:

STRUCTURAL REPAIR OF CONCRETE \leq 5"

FILE NAME =
c:\p\work\p\WIDOT\TINI\AKOSHV\d0101671\016-0948.dgn

USER NAME = tinjakosmv
PLOT SCALE = 100.0000' / IN.
PLOT DATE = 11/4/2009

DESIGNED - RTB
DRAWN - MVT
CHECKED - MVT
DATE - 11/4/09

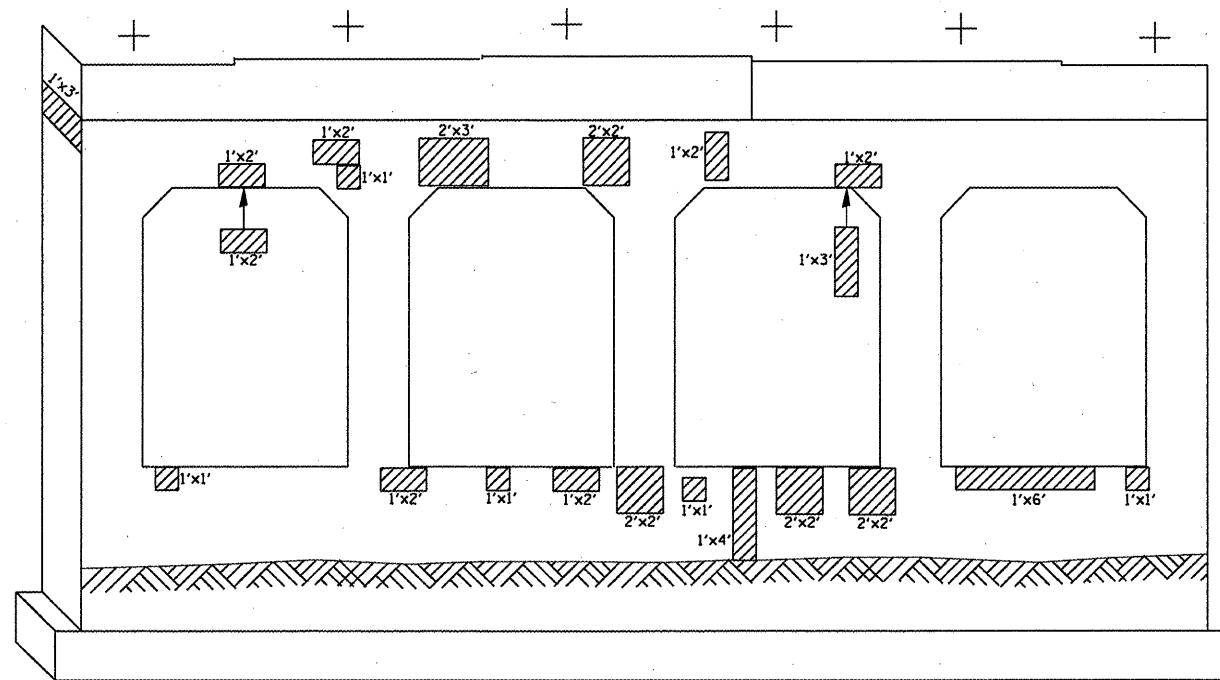
REVISED -
REVISED -
REVISED -
REVISED -

STATE OF ILLINOIS
DEPARTMENT OF TRANSPORTATION

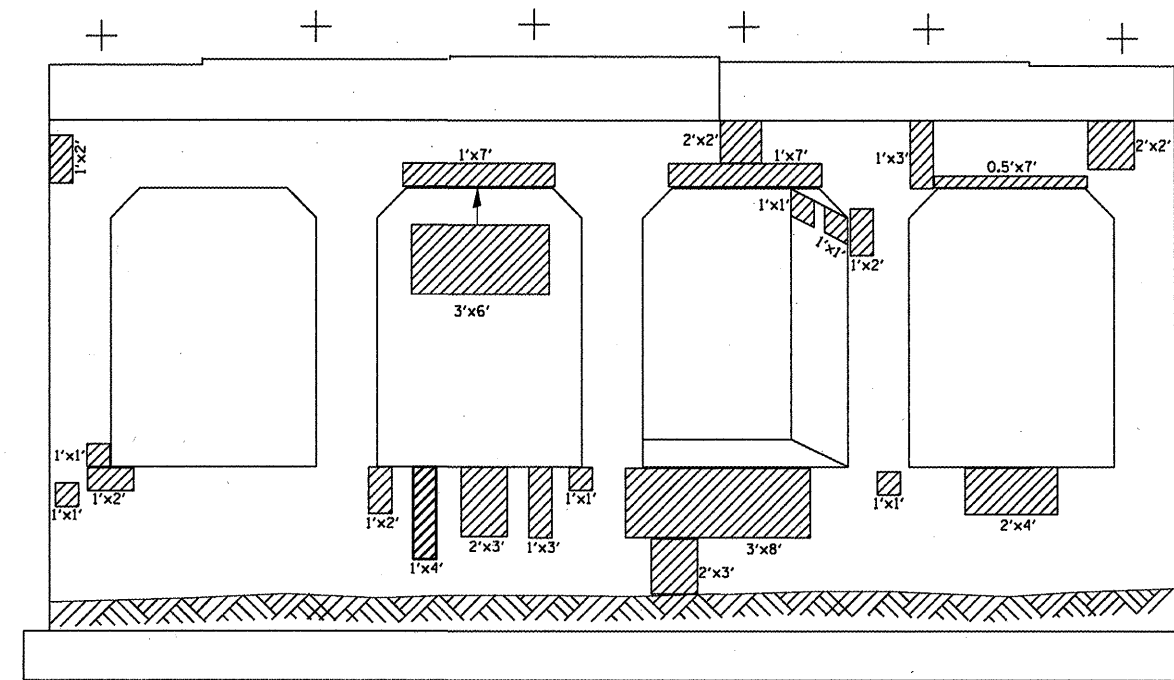
IL 19 (IRVING PARK ROAD) OVER EJ & E RR
ABUTMENTS REPAIRS DETAILS
S.N. 016-0948

SCALE: SHEET NO. 5 OF 7 SHEETS STA. TO STA.

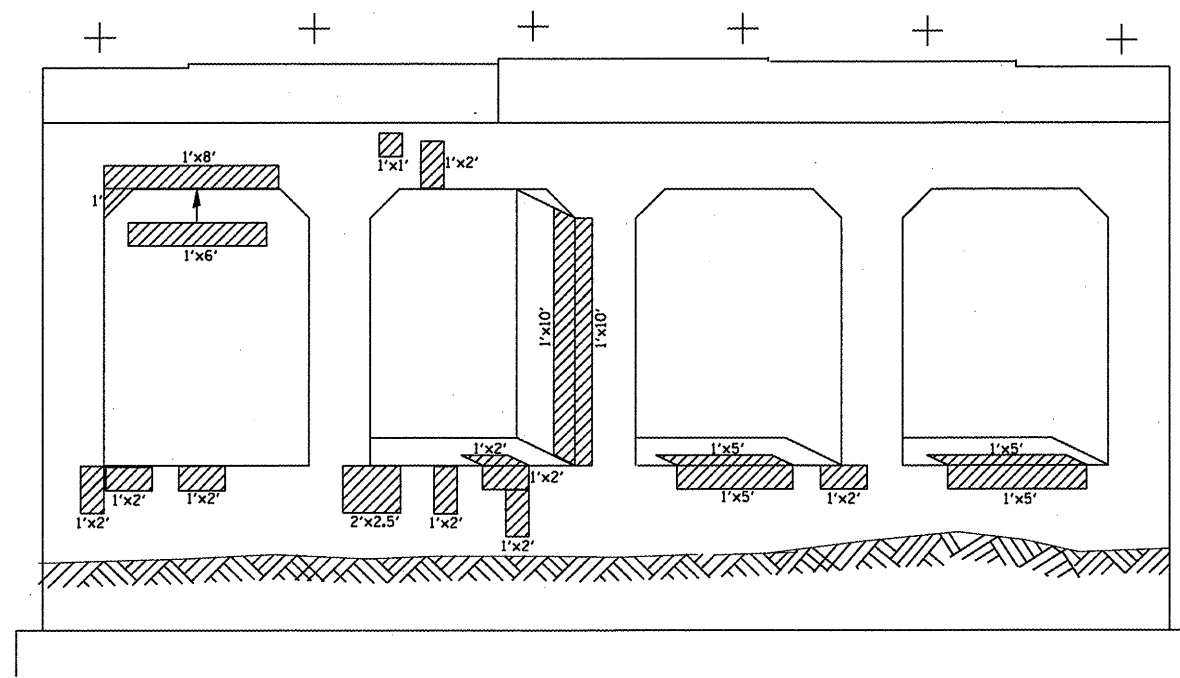
F.A.U. RTE.	SECTION	COUNTY	TOTAL SHEETS	SHEET NO.
1321	0303 VB-1	COOK	21	11
CONTRACT NO. 60H80				
ILLINOIS FED. AID PROJECT				



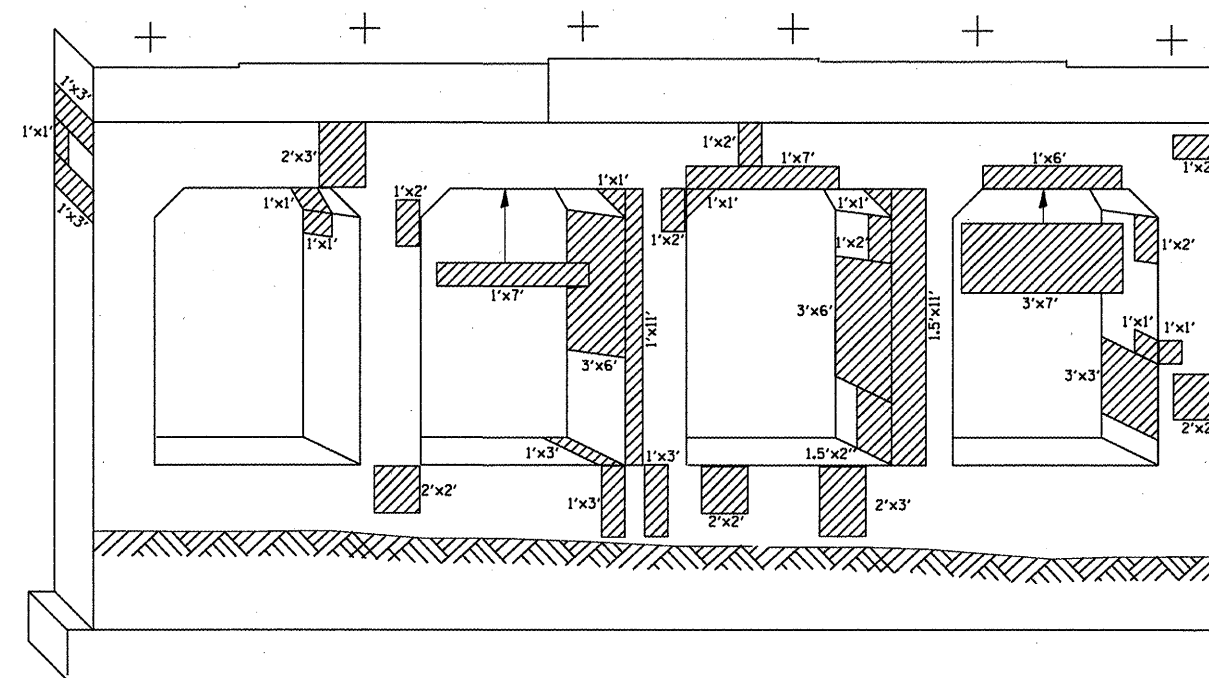
WEST ELEVATION (PIER 1)



WEST ELEVATION (PIER 2)



EAST ELEVATION (PIER 1)



EAST ELEVATION (PIER 2)

LEGEND:

STRUCTURAL REPAIR OF CONCRETE ≤ 5"

BILL OF MATERIALS

ITEM	UNIT	QUANTITY
STRUCTURAL REPAIR OF CONCRETE DEPTH ≤ 5"	SQ. FT.	421

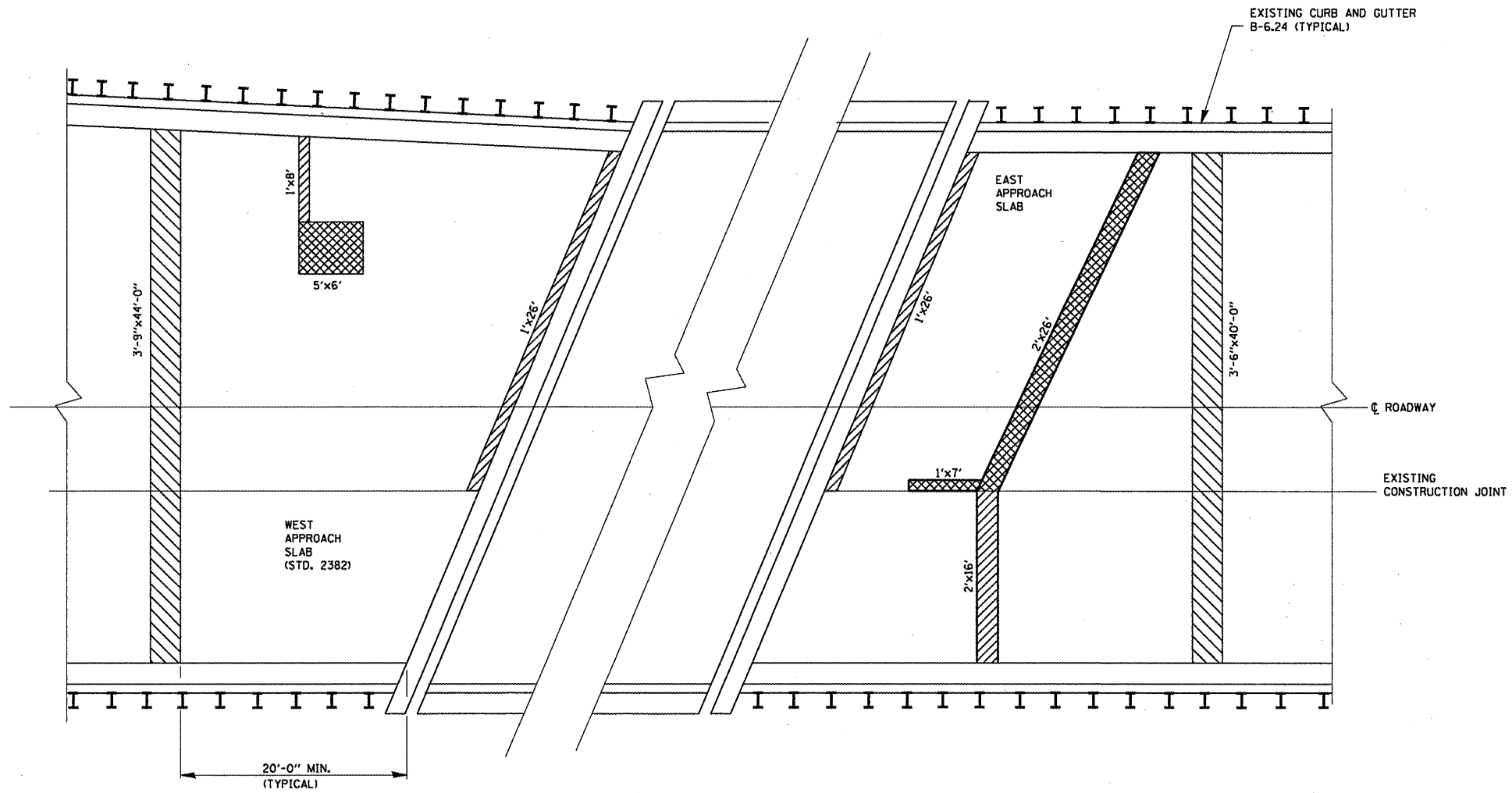
FILE NAME =	USER NAME = tntiakosmv	DESIGNED - RTB	REVISED -
ct\pwork\PM\DOT\TINIAKOSMV\d0101671\016-0948.dgn		DRAWN - MVT	REVISED -
PLOT SCALE = 100.0000 / IN.		CHECKED - MVT	REVISED -
PLOT DATE = 11/5/2009		DATE - 11/4/09	REVISED -

**STATE OF ILLINOIS
DEPARTMENT OF TRANSPORTATION**

**IL 19 (IRVING PARK ROAD) OVER EJ & E RR
PIER REPAIR DETAILS
S.N. 016-0948**

SCALE: SHEET NO. 6 OF 7 SHEETS STA. TO STA.

F.A.U. RTE. 1321	SECTION 0303 VB-1	COUNTY COOK	TOTAL SHEETS 21	SHEET NO. 12
ILLINOIS FED. AID PROJECT			CONTRACT NO. 60H80	



WEST AND EAST APPROACH SLABS

LEGEND:

- APPROACH SLAB REPAIR (PARTIAL DEPTH)
- APPROACH SLAB REPAIR (FULL DEPTH)
- PAVEMENT RELIEF JOINT REPAIR USING CLASS "D" PATCH (SEE ROADWAY PLANS)

NOTE:

ALL APPROACH SLAB AND PAVEMENT RELIEF JOINT REPAIRS SHALL BE COMPLETED PRIOR TO RESURFACING THE APPROACH TO THE BRIDGE.

BILL OF MATERIALS

ITEM	UNIT	QUANTITY
APPROACH SLAB REPAIR (PARTIAL)	SQ. YD.	10
APPROACH SLAB REPAIR (FULL DEPTH)	SQ. YD.	10

FILE NAME =
 USER NAME = tnikosmv
 01-0948.dgn
 PLOT SCALE = 100.0000' / IN.
 PLOT DATE = 11/4/2009

DESIGNED - RTB
 DRAWN - MVT
 CHECKED - MVT
 DATE - 11/4/09

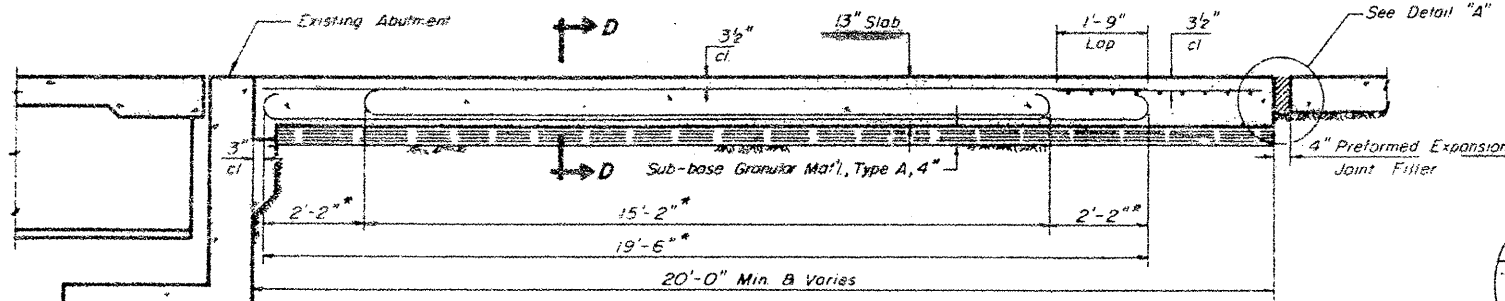
REVISED -
 REVISED -
 REVISED -
 REVISED -

**STATE OF ILLINOIS
 DEPARTMENT OF TRANSPORTATION**

**IL 19 (IRVING PARK ROAD) OVER EJ & E RR
 APPROACH SLAB REPAIR DETAILS
 S.N. 016-0948**

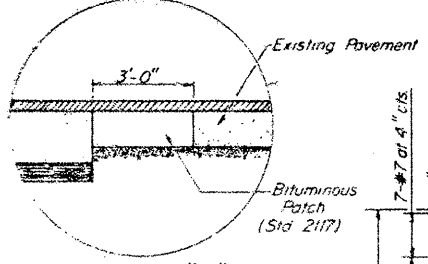
SCALE: SHEET NO. 7 OF 7 SHEETS STA. TO STA.

F.A.U. RTE.	SECTION	COUNTY	TOTAL SHEETS	SHEET NO.
1321	0303 VB-1	COOK	21	13
CONTRACT NO. 60H80			ILLINOIS FED. AID PROJECT	



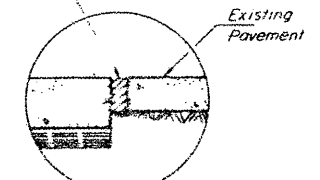
SECTION C-C

* Stagger alternate #7 bars as shown on plan - full width.



DETAIL "A"

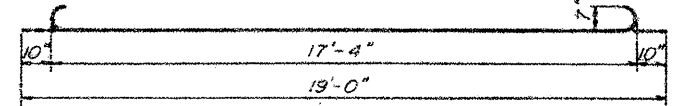
* Bituminous surface is being placed!



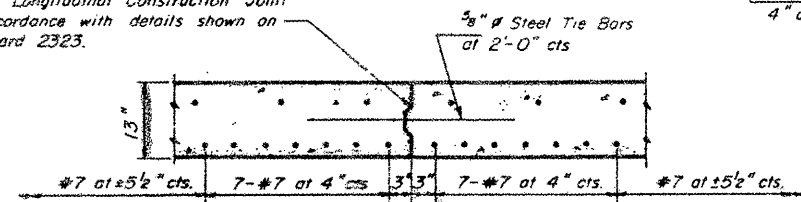
DETAIL "A"

(P.C.C. Pavement Construction)

Keyed Longitudinal Construction Joint in accordance with details shown on Standard 2323.



#7 BARS

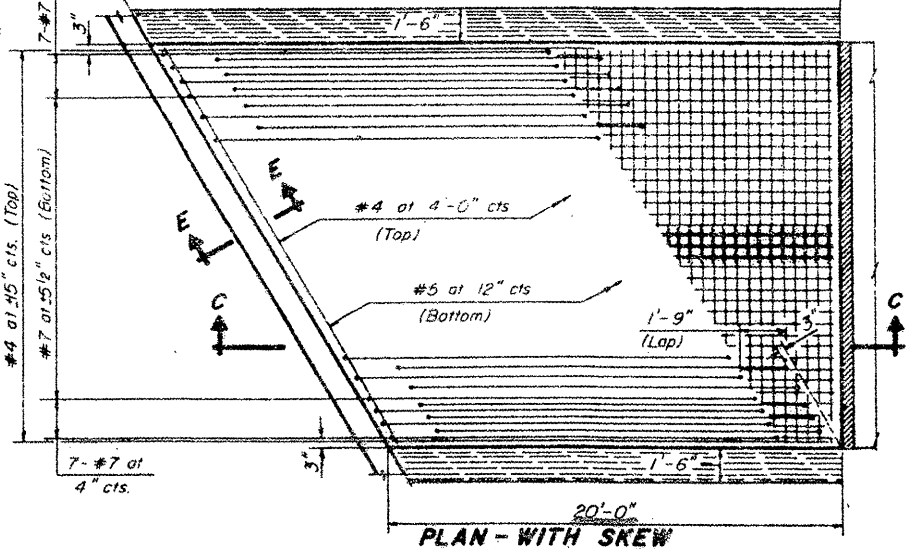


OPTIONAL LONGITUDINAL CONSTRUCTION JOINT

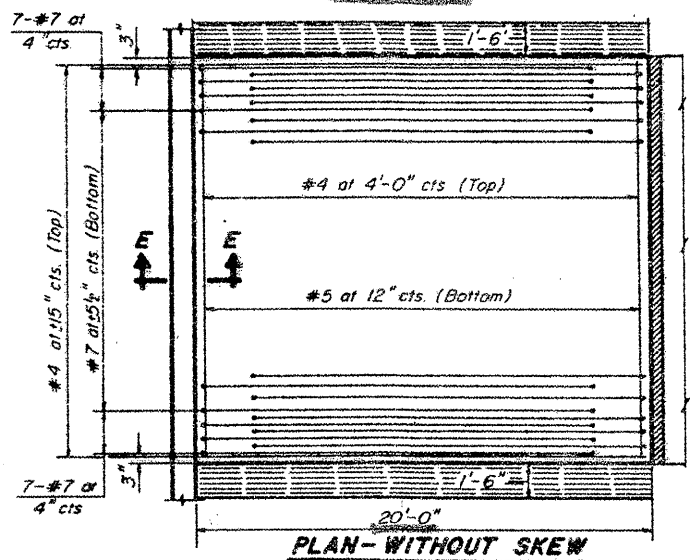
As approved by the Engineer, the Contractor may elect to reduce the widths of pour by use of the Optional Longitudinal Construction Joint shown. Joints shall be located at the edge of a traffic lane.

DESIGN NOTES
 This Standard should be used where an existing approach pavement is being replaced and the pavement within 20 ft. of the structure is in good condition.
 This Standard should not be used with mainline structures on Interstates or Supplemental Freeways.

Design Notes will not appear in the contract plans.

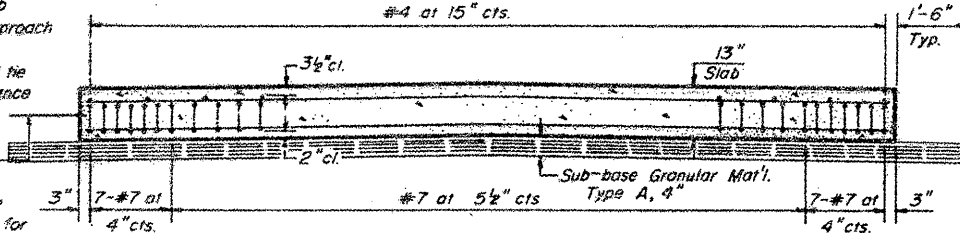


PLAN - WITH SKEW

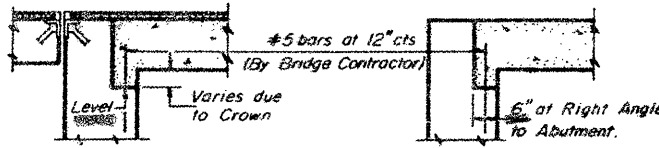


PLAN - WITHOUT SKEW

When the road plans show curb and gutter, gutter, or bridge approach shoulder pavement adjacent to approach slabs, place 1/2 inch steel tie bars at 2'-6 inch centers in accordance with the detail for Bulkhead Longitudinal Construction Joint shown on Standard 2323. Cost of the tie bars will be included in the contract unit price for the adjacent item. Transitions for curb and gutter or gutter shall be as shown on the plans.



SECTION D-D



SECTION E-E

Notes:
 For skews of less than 10° omit wire fabric. For skews of 10° or more use Welded Wire Fabric, 6"x6"-W5.5 x W5.5, placed 3/2 inch below top of slab. Expanded Metal weighing not less than 78 Pounds per 100 Sq. Ft. or a welded bar mat weighing not less than 78 Pounds per 100 Sq. Ft. having members of equal size in both directions and spaced not over 8" apart may be used instead of the Welded Wire Fabric, 6"x6"-W5.5 x W5.5, provided the expanded metal or bar mat is furnished at no additional cost to the State. Reinforcement bars shall conform to the requirements of A.A.S.H.T.O. M 31 or M 53, Grade 60.

DESIGN STRESSES

$f_y = 60,000$ p.s.i.
 $f_c = 3500$ psi
 $n = 8.5$

GENERAL NOTES

The cost of tie bars, expansion joint filler, sub-base, welded wire fabric and bituminous prime when required shall be considered as included in the unit cost of the Bridge Approach Pavement.
 Preformed Expansion Joint Filler shall conform to Section 715 of the Standard Specifications. Width of Bridge Approach Slab shall be determined before the reinforcement bars are fabricated.
 The bituminous patch, when required, will be paid for in accordance with Section 620 of the Standard Specifications.

FOR INFORMATION ONLY

BRIDGE APPROACH PAVEMENT

Sheet 1 of 2

STANDARD 2382-1

Illinois Department of Transportation

PASSED Sept 4 1979

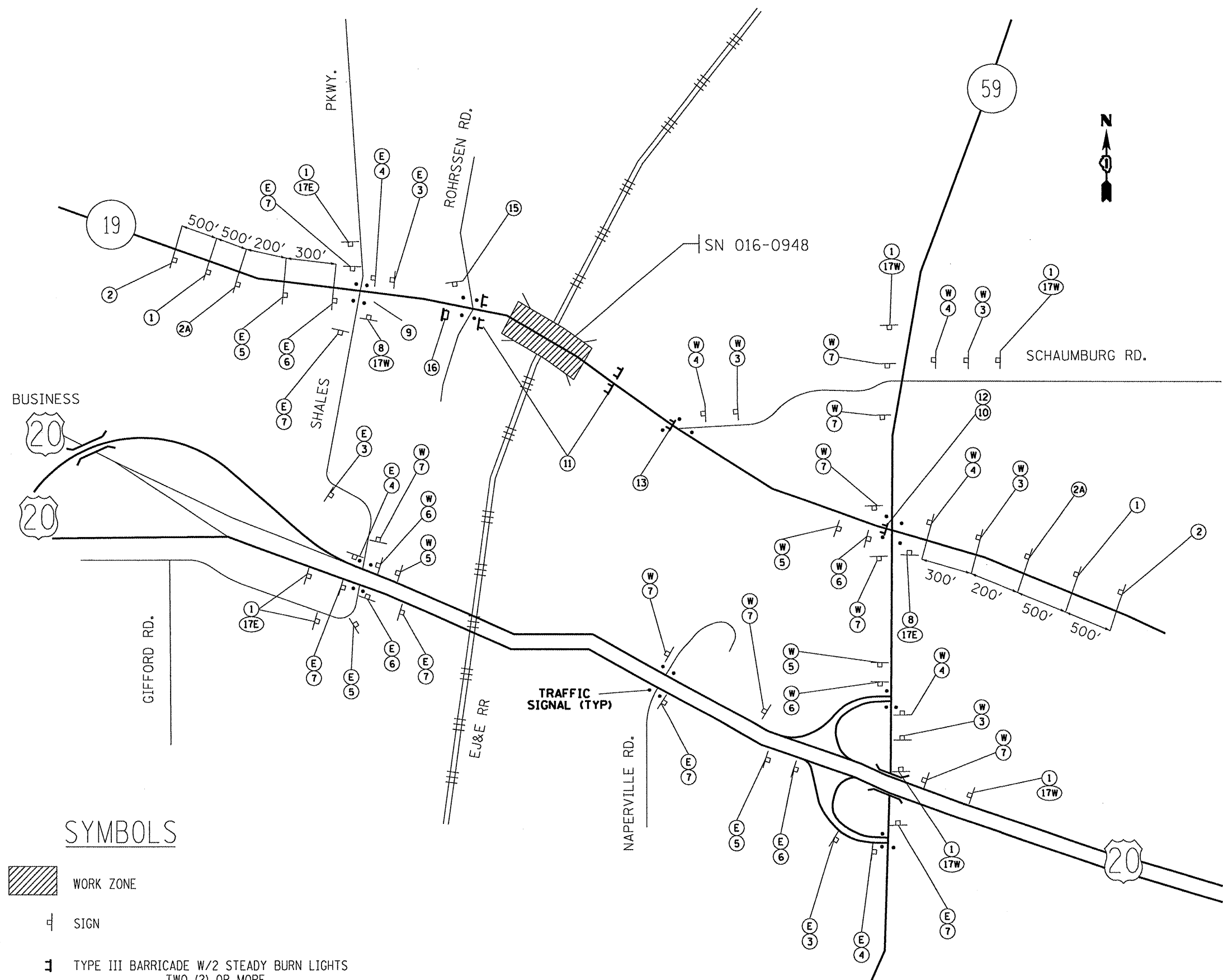
APPROVED Sept 4 1979

F.A.U. RTE.	SECTION	COUNTY	TOTAL SHEETS	SHEET NO.
1321	0303 VB-1	COOK	21	14
CONTRACT NO. 60H80				
ILLINOIS FED. AID PROJECT				

H-5.30 a

SYMBOLS

W20-2 48
 EAST ILL 19
 WEST ILL 19
 ROAD CLOSED AHEAD W20-3 (0) 48
 ROAD CLOSED 500 FT W20-3 (0) 48
 M5-1L (0) 2115
 M5-1R (0) 2115
 M6-3(0)-2115
 END DETOUR M4-8a
 DETOUR M4-10R 48x18
 ROAD CLOSED R11-2
 ROAD CLOSED 1.5 MILES AHEAD LOCAL TRAFFIC ONLY R11-3a 60x30



ROAD CLOSED TO THRU TRAFFIC R11-4
 ROAD CLOSED 0.5 MILES AHEAD LOCAL TRAFFIC ONLY R11-3a 60x30

NOTE: USE BARRELS TO CLOSE LEFT TURN LANE ON SB ROHRSSSEN RD.
 R3-2
 15

16 -CMS: USE BARRELS TO CLOSE EB IL 19 THRU LANE AT ROHRSSSEN RD.

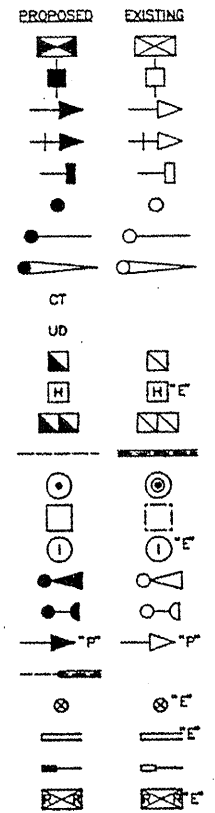
EAST ILL 19
 WEST ILL 19
 17E 17W

ILL 19 M1-50-2424
 DETOUR M4-8-2412
 EAST M3-2-2412
 WEST M3-4-2412

FILE NAME =	USER NAME = rodriiguezj	DESIGNED -	REVISED -	STATE OF ILLINOIS DEPARTMENT OF TRANSPORTATION	IL 19 (IRVING PARK RD.) OVER EJ & E RR DETOUR PLAN	F.A.U. RTE.	SECTION	COUNTY	TOTAL SHEETS	SHEET NO.
at:\p\work\p\WIDOT\RODRIGUEZJ\d0157028	81609-sht-rdwj.dgn	DRAWN -	REVISED -			1321	0303 VB-1	COOK	21	15
PLOT SCALE = 1/8" = 1' / IN.	CHECKED -	REVISED -	REVISED -			CONTRACT NO. 60H80				
PLOT DATE = 11/4/2009	DATE -	REVISED -	REVISED -			(ILLINOIS) FED. AID PROJECT				

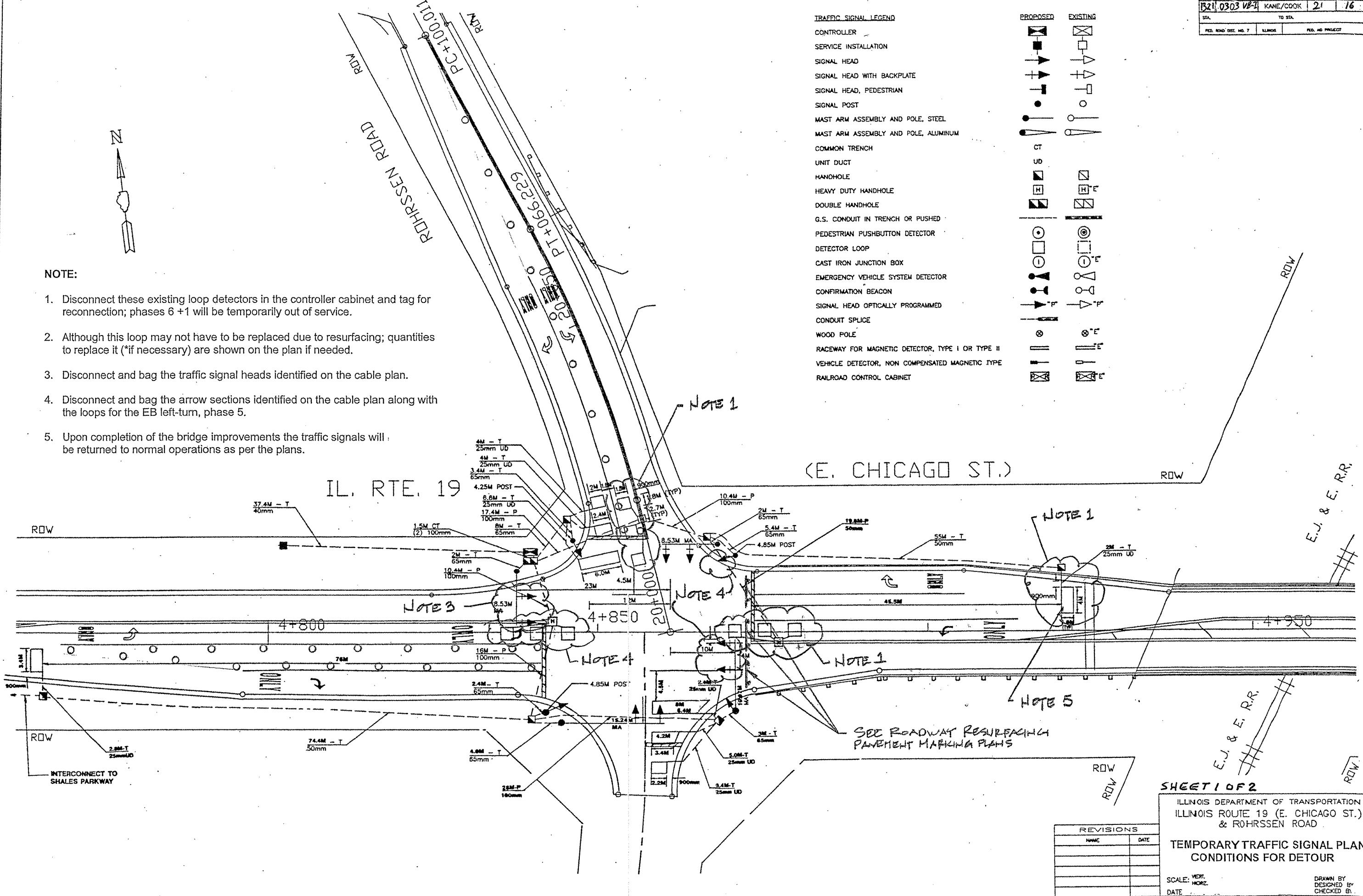
TRAFFIC SIGNAL LEGEND

- CONTROLLER
- SERVICE INSTALLATION
- SIGNAL HEAD
- SIGNAL HEAD WITH BACKPLATE
- SIGNAL HEAD, PEDESTRIAN
- SIGNAL POST
- MAST ARM ASSEMBLY AND POLE, STEEL
- MAST ARM ASSEMBLY AND POLE, ALUMINUM
- COMMON TRENCH
- UNIT DUCT
- HANDHOLE
- HEAVY DUTY HANDHOLE
- DOUBLE HANDHOLE
- G.S. CONDUIT IN TRENCH OR PUSHED
- PEDESTRIAN PUSHBUTTON DETECTOR
- DETECTOR LOOP
- CAST IRON JUNCTION BOX
- EMERGENCY VEHICLE SYSTEM DETECTOR
- CONFIRMATION BEACON
- SIGNAL HEAD OPTICALLY PROGRAMMED
- CONDUIT SPLICE
- WOOD POLE
- RACEWAY FOR MAGNETIC DETECTOR, TYPE I OR TYPE II
- VEHICLE DETECTOR, NON COMPENSATED MAGNETIC TYPE
- RAILROAD CONTROL CABINET



NOTE:

1. Disconnect these existing loop detectors in the controller cabinet and tag for reconnection; phases 6 +1 will be temporarily out of service.
2. Although this loop may not have to be replaced due to resurfacing; quantities to replace it (*if necessary) are shown on the plan if needed.
3. Disconnect and bag the traffic signal heads identified on the cable plan.
4. Disconnect and bag the arrow sections identified on the cable plan along with the loops for the EB left-turn, phase 5.
5. Upon completion of the bridge improvements the traffic signals will be returned to normal operations as per the plans.



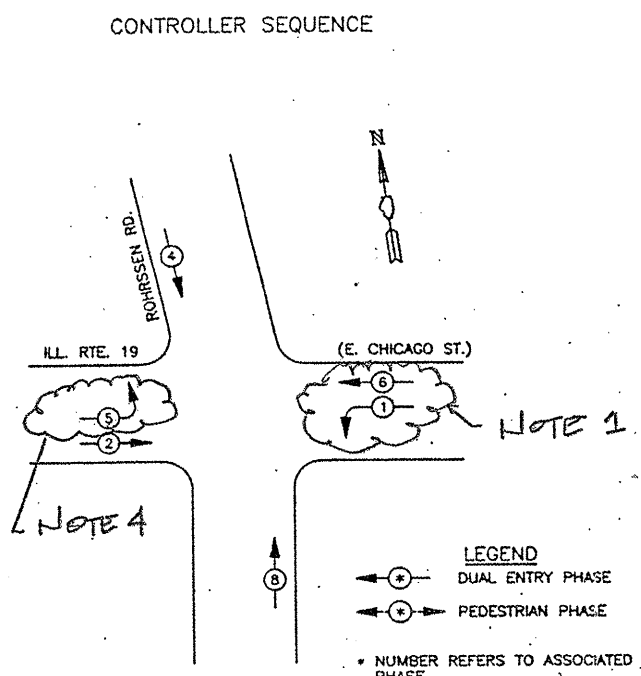
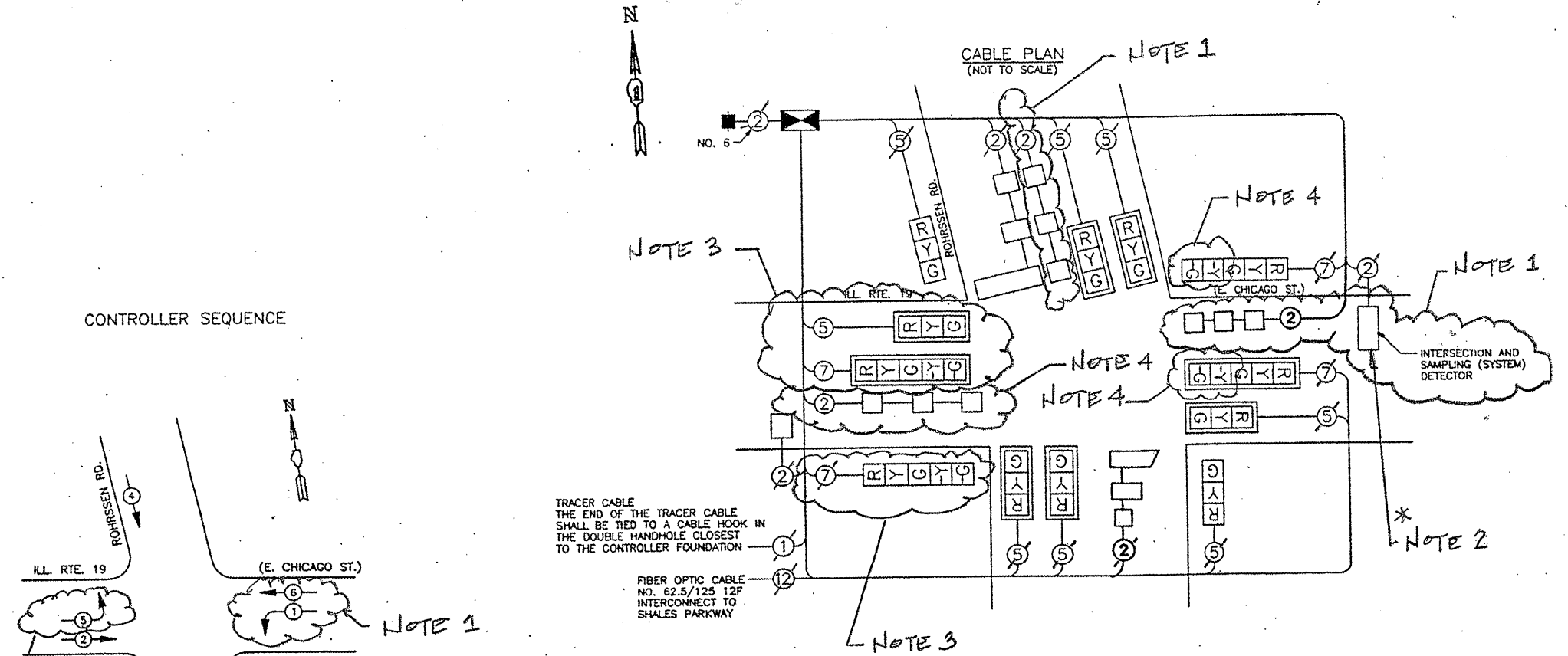
SHEET 1 OF 2

ILLINOIS DEPARTMENT OF TRANSPORTATION
ILLINOIS ROUTE 19 (E. CHICAGO ST.)
& RÖHRSEN ROAD

TEMPORARY TRAFFIC SIGNAL PLAN
CONDITIONS FOR DETOUR

REVISIONS	
NAME	DATE

SCALE: VERT. 1" = 40'
HORIZ. 1" = 40'
DATE: _____
DRAWN BY: _____
DESIGNED BY: _____
CHECKED BY: _____



SEE THE TRAFFIC SIGNAL NOTES ON THE PLAN SHEET

TRAFFIC SIGNAL SCHEDULE OF QUANTITIES

Code	Quantities	Pay Item	Unit
70106800	1	Changeable Message Sign	Each
85000200	1	Maintenance of Existing Traffic Signal Installation	Each
* 88600600	56	Detector Loop Replacement	Foot

EXISTING	PROPOSED	CABLE PLAN LEGEND
G	G	8" (200 mm) TRAFFIC SIGNAL SECTION
R	R	12" (300 mm) TRAFFIC SIGNAL SECTION
W	W	12" (300 mm) PEDESTRIAN SIGNAL SECTION
P	P	12" (300 mm) PEDESTRIAN SIGNAL SECTION
⊗	⊗	CONTROLLER CABINET
⊕	⊕	SERVICE INSTALLATION
⊞	⊞	TELEPHONE HOOK-UP
□	□	VEHICLE DETECTOR, INDUCTION LOOP
⊞	⊞	MAGNETIC DETECTOR
⊞	⊞	EMERGENCY VEHICLE LIGHT DETECTOR
⊞	⊞	CONFIRMATION BEACON
⊞	⊞	PUSHBUTTON DETECTOR
②	②	2 DENOTES NUMBER OF CONDUCTORS. ALL CABLE NO. 14 EXCEPT AS INDICATED. ALL LOOP DETECTOR CABLE TO BE SHIELDED.
R	R	SIGNAL FACE WITH BACKPLATE. "P" INDICATES PROGRAMMED HEAD

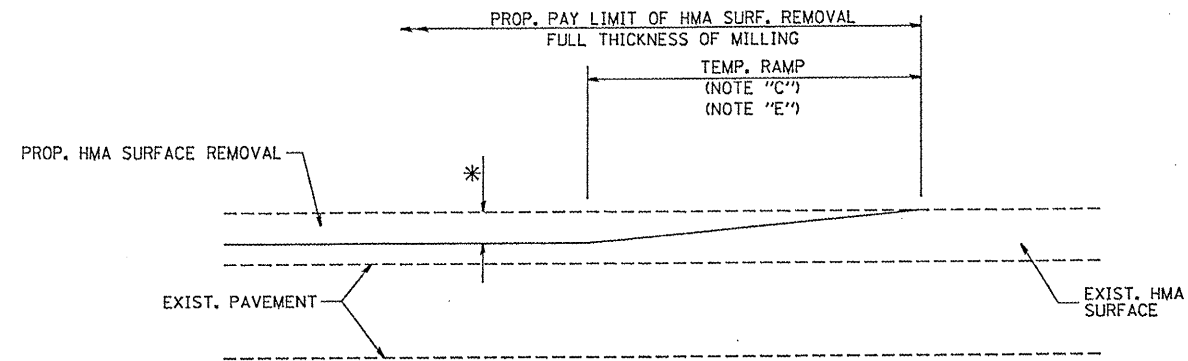
SHEET 2 OF 2

ILLINOIS DEPARTMENT OF TRANSPORTATION
 ILLINOIS ROUTE 19 (E. CHICAGO ST.) & ROHRSSSEN ROAD

TEMPORARY CABLE PLAN CONDITIONS FOR DETOUR

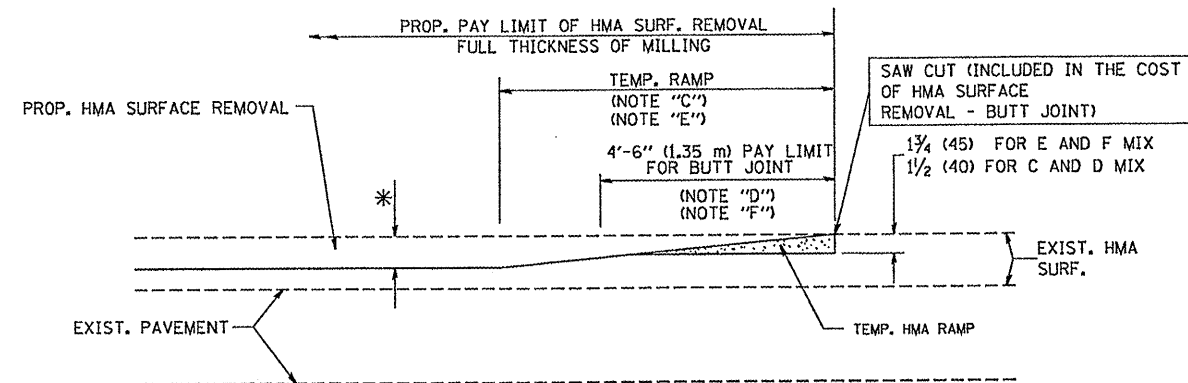
REVISIONS	
NAME	DATE

SCALE: DATE 11-3-89
 DRAWN BY: DESIGNED BY: CHECKED BY:



MILLED TEMPORARY RAMP
(FOR BUTT JOINT AND HMA TAPER SEE DETAIL BELOW)

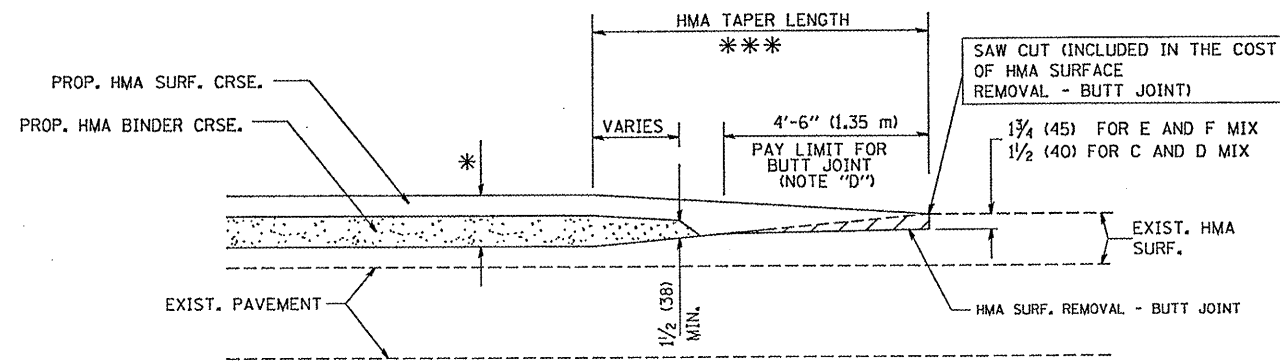
OPTION 1



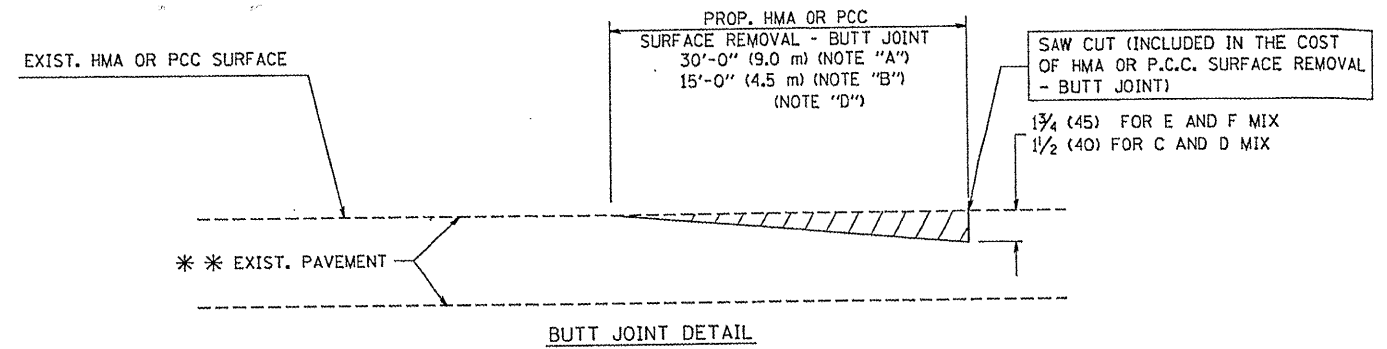
HMA CONSTRUCTED TEMPORARY RAMP
(FOR BUTT JOINT AND HMA TAPER SEE DETAIL BELOW)

OPTION 2

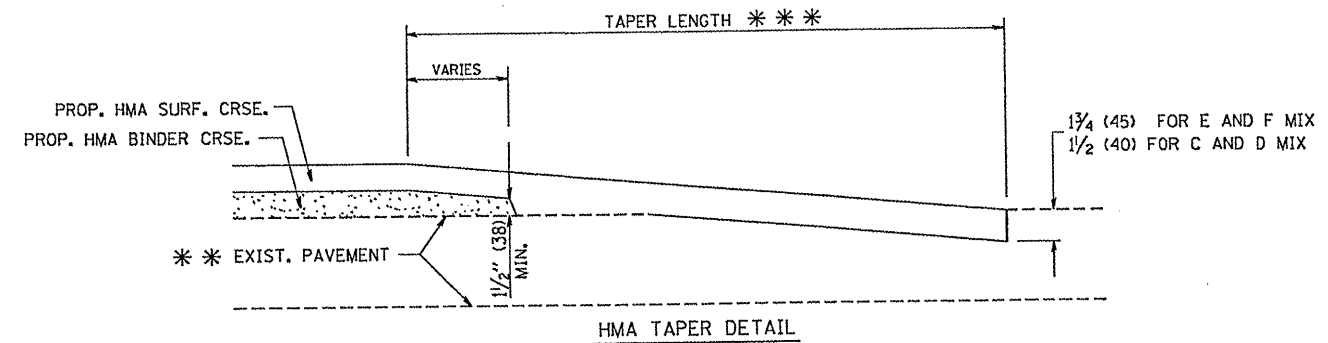
TYPICAL TEMPORARY RAMP



BUTT JOINT AND HMA TAPER
TYPICAL BUTT JOINT AND HMA TAPER
FOR MILLING AND RESURFACING



BUTT JOINT DETAIL



TYPICAL BUTT JOINT AND HMA TAPER
FOR RESURFACING ONLY

*** PC CONCRETE, HMA OR HMA RESURFACED PAVEMENT.

NOTES

- A: MAINLINE ROADWAYS AND MAJOR SIDE ROADS.
 - B: MINOR SIDE ROADS.
 - C: THE TEMP. RAMP SHALL BE CONSTRUCTED IMMEDIATELY UPON REMOVAL OF THE EXISTING HMA SURFACE.
 - D: THE BUTT JOINT SHALL BE CONSTRUCTED IMMEDIATELY PRIOR TO PLACING THE PROPOSED HMA COURSES.
 - E: TAPER THE TEMP. RAMP AT A RATE OF 3'-0" (900 mm) PER 1 INCH (25 mm) OF MILLING THICKNESS.
 - F: INSTALLATION AND REMOVAL OF THE 4'-6" (1.35 m) TEMP. RAMP IS INCLUDED IN COST OF HMA SURFACE REMOVAL - BUTT JOINT
 - G: SEE ARTICLE 406.08 AND 406.14 OF THE STANDARD SPECIFICATIONS FOR "HMA AND/OR PCC SURFACE REMOVAL, BUTT JOINT".
- * SEE TYPICAL SECTIONS FOR MILLING THICKNESS.
- *** 20'-0" (6.1 m) PER 1 (25) RESURFACING (NOTE "A")
10'-0" (3.0 m) PER 1 (25) RESURFACING (NOTE "B")

BASIS OF PAYMENT:

THE BUTT JOINT WILL BE PAID FOR AT THE CONTRACT UNIT PRICE PER SQUARE YARD (SQUARE METER) FOR "HOT-MIX ASPHALT SURFACE REMOVAL - BUTT JOINT" OR FOR "PORTLAND CEMENT CONCRETE SURFACE REMOVAL - BUTT JOINT".

ALL DIMENSIONS ARE IN INCHES (MILLIMETERS) UNLESS OTHERWISE SHOWN.

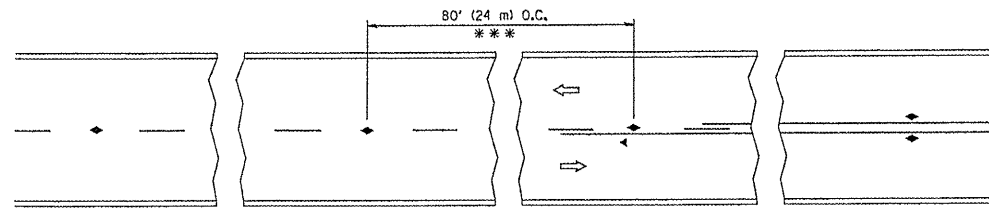
FILE NAME =
W:\d\stsd\22x34\bd32.dgn

USER NAME = goglieno	DESIGNED - M. DE YONG	REVISED - R. SHAH 10-25-94
PLOT SCALE = 50.0000' / IN.	DRAWN -	REVISED - A. ABBAS 03-21-97
PLOT DATE = 1/4/2008	CHECKED -	REVISED - M. GOMEZ 04-06-01
	DATE - 06-13-90	REVISED - R. BORO 01-01-07

STATE OF ILLINOIS
DEPARTMENT OF TRANSPORTATION

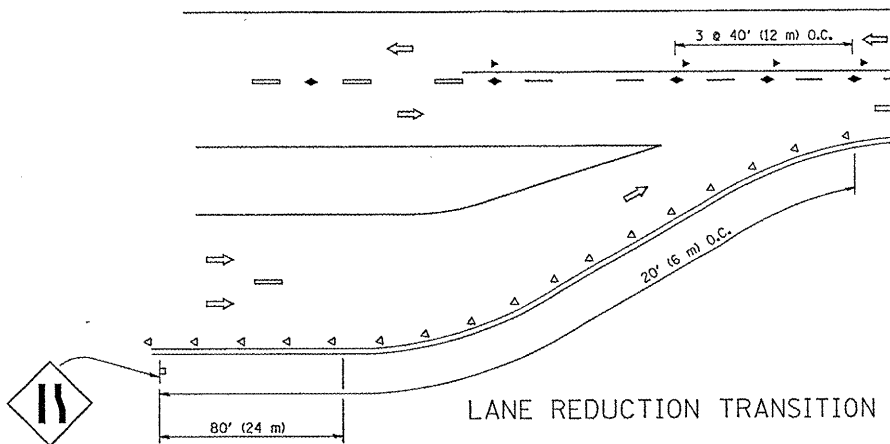
BUTT JOINT AND HMA TAPER DETAILS	
SCALE: NONE	SHEET NO. 1 OF 1 SHEETS STA. TO STA.

F.A.U. RTE. 1321	SECTION 0503 VB-1	COUNTY COOK	TOTAL SHEETS 21	SHEET NO. 18
BD40-05 BD32		CONTRACT NO. 60H80		
FED. ROAD DIST. NO. 1 ILLINOIS FED. AID PROJECT				

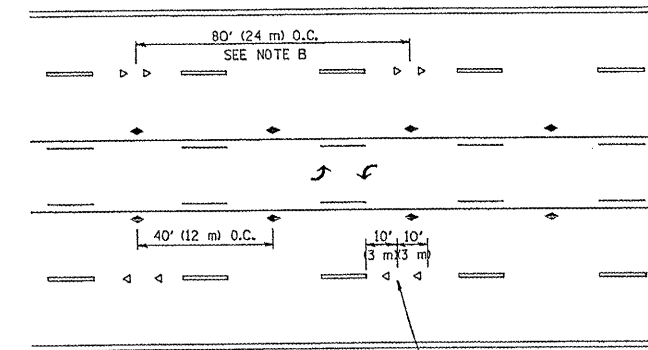


*** REDUCE TO 40' (12 m) O.C. ON CURVES WITH POSTED OR ADVISORY SPEED 45 M.P.H. (70 km/h) OR LESS.

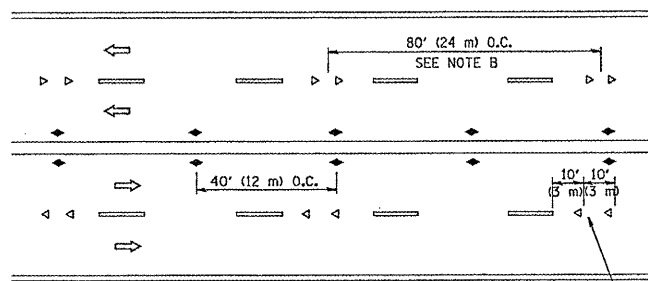
TWO-LANE/TWO-WAY



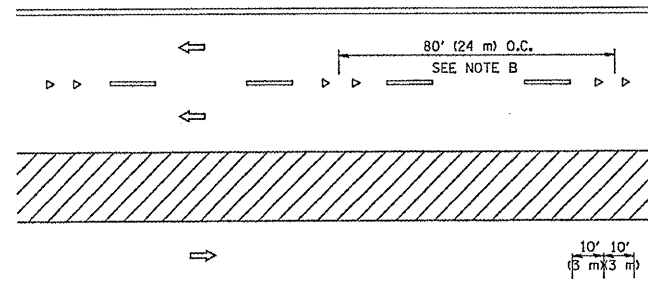
LANE REDUCTION TRANSITION



TWO-WAY LEFT TURN



MULTI-LANE/UNDIVIDED



MULTI-LANE/DIVIDED

GENERAL NOTES

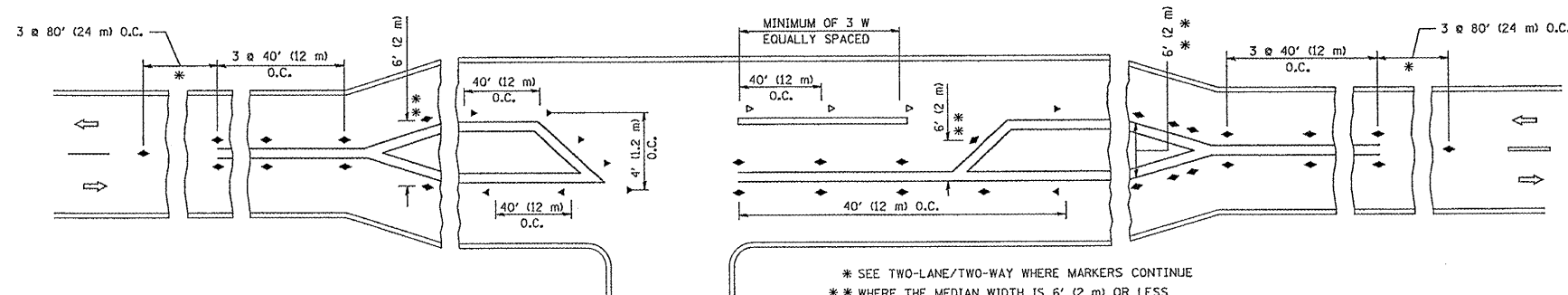
1. MARKERS USED WITH DASHED LINES SHALL BE CENTERED IN THE GAP BETWEEN SEGMENTS.
2. MARKERS USED ADJACENT TO SOLID LINES SHALL BE OFFSET 2 TO 3 (50 TO 75) TOWARD TRAFFIC AS SHOWN.
3. MARKERS THROUGH TANGENTS LESS THAN 500' (150 m) IN LENGTH BETWEEN CURVES SHALL BE INSTALLED AT THE LESSER OF THE TWO CURVE SPACINGS.

SYMBOLS

- YELLOW STRIPE
- WHITE STRIPE
- ◀ ONE-WAY AMBER MARKER
- ◀ ONE-WAY CRYSTAL MARKER (W/O)
- ▶ TWO-WAY AMBER MARKER

LANE MARKER NOTES

- A. USE DOUBLE LANE LINE MARKERS SPACED AS SHOWN.
- B. REDUCE TO 40' (12 m) O.C. ON CURVES WHERE ADVISORY SPEEDS ARE 10 M.P.H (20 km/h) LOWER THAN POSTED SPEEDS.



LEFT TURN

* SEE TWO-LANE/TWO-WAY WHERE MARKERS CONTINUE
 ** WHERE THE MEDIAN WIDTH IS 6' (2 m) OR LESS USE TWO-WAY MARKERS.

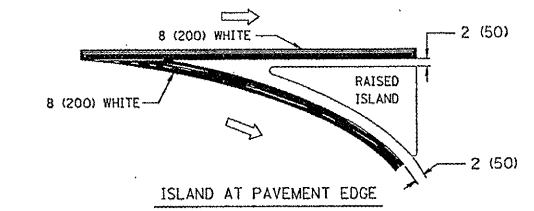
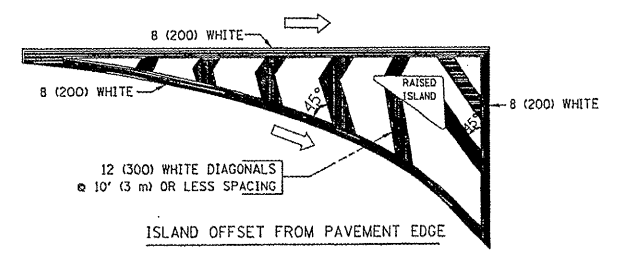
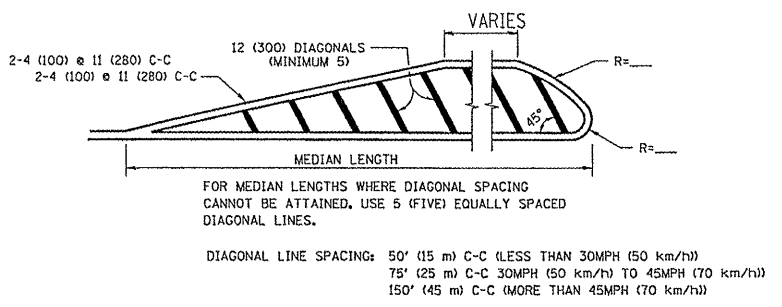
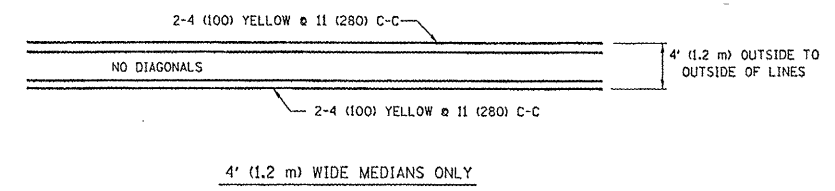
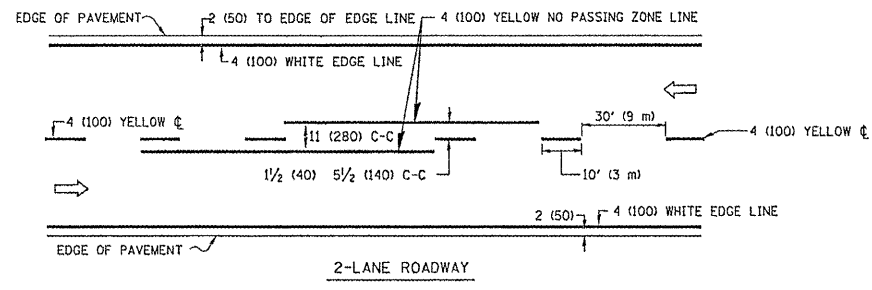
All dimensions are in inches (millimeters) unless otherwise shown.

FILE NAME =	USER NAME = drivakosgn	DESIGNED -	REVISED - T. RAMMACHER 09-19-94
ct:\pwork\p\dot\drivakosgn\0108315\to	l.edgn	DRAWN -	REVISED - T. RAMMACHER 03-12-99
	PLOT SCALE = 50.000' / IN.	CHECKED -	REVISED - T. RAMMACHER 01-06-00
	PLOT DATE = 9/9/2009	DATE -	REVISED - C. JUCIUS 09-09-09

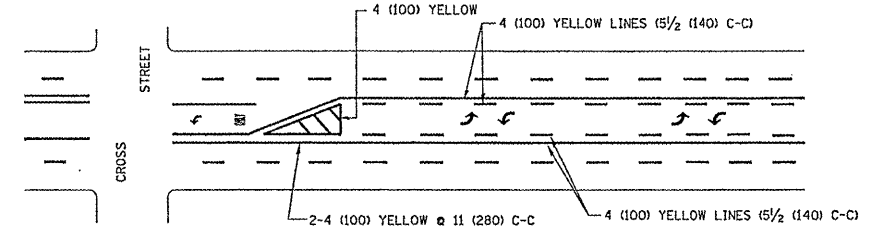
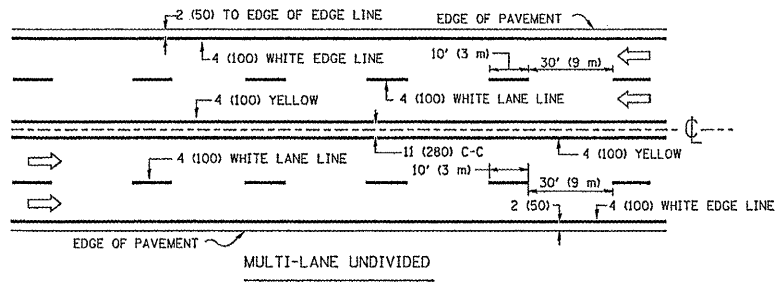
STATE OF ILLINOIS
 DEPARTMENT OF TRANSPORTATION

TYPICAL APPLICATIONS			
RAISED REFLECTIVE PAVEMENT MARKERS (SNOW-PLOW RESISTANT)			
SCALE: NONE	SHEET NO. 1 OF 1 SHEETS	STA.	TO STA.

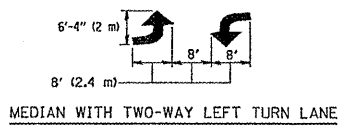
F.A. RTE.	SECTION	COUNTY	TOTAL SHEETS	SHEET NO.
1321	0303 VB-1	COOK	21	19
TC-11			CONTRACT NO. 60H80	
FED. ROAD DIST. NO. 1 ILLINOIS FED. AID PROJECT				



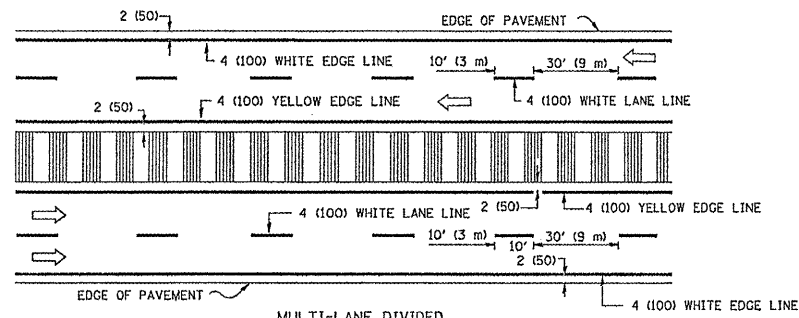
TYPICAL ISLAND MARKING



A MINIMUM OF TWO PAIRS OF TURN ARROWS SHALL BE USED, WHITE IN COLOR. ADDITIONAL PAIRS SHALL BE PLACED AT 200' (60 m) TO 300' (90 m) INTERVALS.

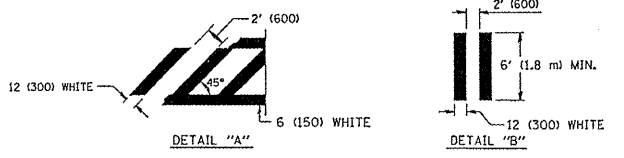
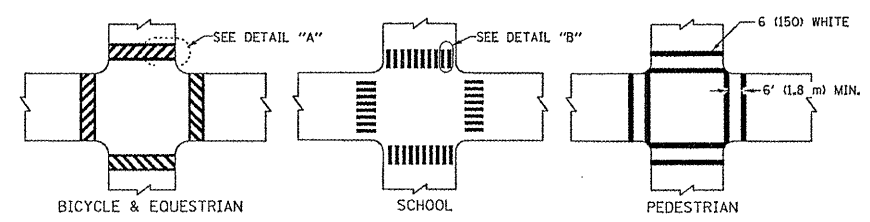


TYPICAL PAINTED MEDIAN MARKING

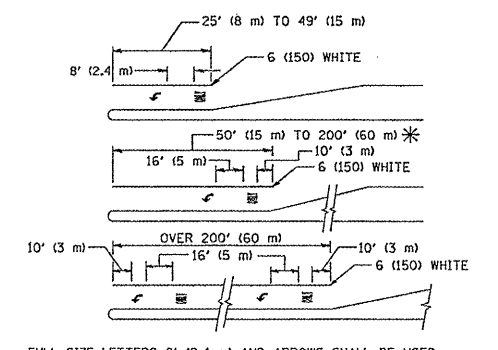


NOTE: MEDIANS WITH BARRIER CURB DO NOT REQUIRE AN EDGE LINE

TYPICAL LANE AND EDGE LINE MARKING



TYPICAL CROSSWALK MARKING



FULL SIZE LETTERS 8' (2.4 m) AND ARROWS SHALL BE USED.
* AREA = 15.6 SQ. FT. (1.5 m²) ONLY AREA = 20.8 SQ. FT. (1.9 m²)
* TURN LANES IN EXCESS OF 400' (120 m) IN LENGTH MAY HAVE AN ADDITIONAL SET OF ARROW - "ONLY" INSTALLED MIDWAY BETWEEN THE OTHER TWO SETS OF ARROW - "ONLY".

TYPICAL LEFT (OR RIGHT) TURN LANE

TYPICAL TURN LANE MARKING

TYPE OF MARKING	WIDTH OF LINE	PATTERN	COLOR	SPACING / REMARKS
CENTERLINE ON 2 LANE PAVEMENT	4 (100)	SKIP-DASH	YELLOW	10' (3 m) LINE WITH 30' (9 m) SPACE
CENTERLINE ON MULTI-LANE UNDIVIDED PAVEMENT	2 @ 4 (100)	SOLID	YELLOW	11 (280) C-C
NO PASSING ZONE LINES: FOR ONE DIRECTION FOR BOTH DIRECTIONS	4 (100)	SOLID	YELLOW	5/2 (140) C-C FROM SKIP-DASH CENTERLINE
LANE LINES	4 (100) 5 (125) ON FREEWAYS	SKIP-DASH SKIP-DASH	WHITE	10' (3 m) LINE WITH 30' (9 m) SPACE
DOTTED LINES (EXTENSIONS OF CENTER, LANE OR TURN LANE MARKINGS)	SAME AS LINE BEING EXTENDED	SKIP-DASH	SAME AS LINE BEING EXTENDED	2' (600) LINE WITH 6' (1.8 m) SPACE
EDGE LINES	4 (100)	SOLID	YELLOW-LEFT WHITE-RIGHT	OUTLINE MOUNTABLE MEDIANS IN YELLOW; EDGE LINES ARE NOT USED NEXT TO BARRIER CURB
TURN LANE MARKINGS	6 (150) LINE; FULL SIZE LETTERS & SYMBOLS (8' (2.4m))	SOLID	WHITE	SEE TYPICAL TURN LANE MARKING DETAIL
TWO WAY LEFT TURN MARKING	2 @ 4 (100) EACH DIRECTION	SKIP-DASH AND SOLID	YELLOW	10' (3 m) LINE WITH 30' (9 m) SPACE FOR SKIP-DASH; 5/2 (140) C-C BETWEEN SOLID LINE AND SKIP-DASH LINE
	8' (2.4m) LEFT ARROW	IN PAIRS	WHITE	SEE TYPICAL TWO-WAY LEFT TURN MARKING DETAIL
CROSSWALK LINES (PEDESTRIAN) A. DIAGONALS (BIKE & EQUESTRIAN) B. LONGITUDINAL BARS (SCHOOL)	2 @ 6 (150) 12 (300) @ 45° 12 (300) @ 90°	SOLID SOLID SOLID	WHITE WHITE WHITE	NOT LESS THAN 6' (1.8 m) APART 2' (600) APART SEE TYPICAL CROSSWALK MARKING DETAILS.
STOP LINES	24 (600)	SOLID	WHITE	PLACE 4' (1.2 m) IN ADVANCE OF AND PARALLEL TO CROSSWALK, IF PRESENT. OTHERWISE, PLACE AT DESIRED STOPPING POINT, PARALLEL TO CROSSROAD CENTERLINE, WHERE POSSIBLE
PAINTED MEDIANS	2 @ 4 (100) WITH 12 (300) DIAGONALS @ 45°	SOLID	YELLOW; TWO WAY TRAFFIC WHITE; ONE WAY TRAFFIC	11 (280) C-C FOR THE DOUBLE LINE SEE TYPICAL PAINTED MEDIAN MARKING.
GORE MARKING AND CHANNELIZING LINES	8 (200) WITH 12 (300) DIAGONALS @ 45°	SOLID	WHITE	DIAGONALS: 15' (4.5 m) C-C (LESS THAN 30MPH (50 km/h)) 20' (6 m) C-C 30MPH (50 km/h) TO 45MPH (70 km/h) 30' (9 m) C-C (OVER 45MPH (70 km/h))
RAILROAD CROSSING	24 (600) TRANSVERSE LINES; "RR" IS 6' (1.8 m) LETTERS; 16 (400) LINE FOR "X"	SOLID	WHITE	SEE STATE STANDARD 780001 AREA OF: "R" = 3.6 SQ. FT. (0.33 m ²) EACH "X" = 54.0 SQ. FT. (5.0 m ²)
SHOULDER DIAGONALS	12 (300) @ 45°	SOLID	WHITE - RIGHT YELLOW - LEFT	50' (15 m) C-C (LESS THAN 30MPH (50 km/h)) 75' (25 m) C-C (30 MPH (50 km/h) TO 45MPH (70 km/h)) 150' (45 m) C-C (OVER 45MPH (70 km/h))

FOR FURTHER DETAILS ON PAVEMENT MARKING REFER TO STANDARD SPECIFICATIONS FOR ROAD AND BRIDGE CONSTRUCTION AND STATE STANDARD 780001.

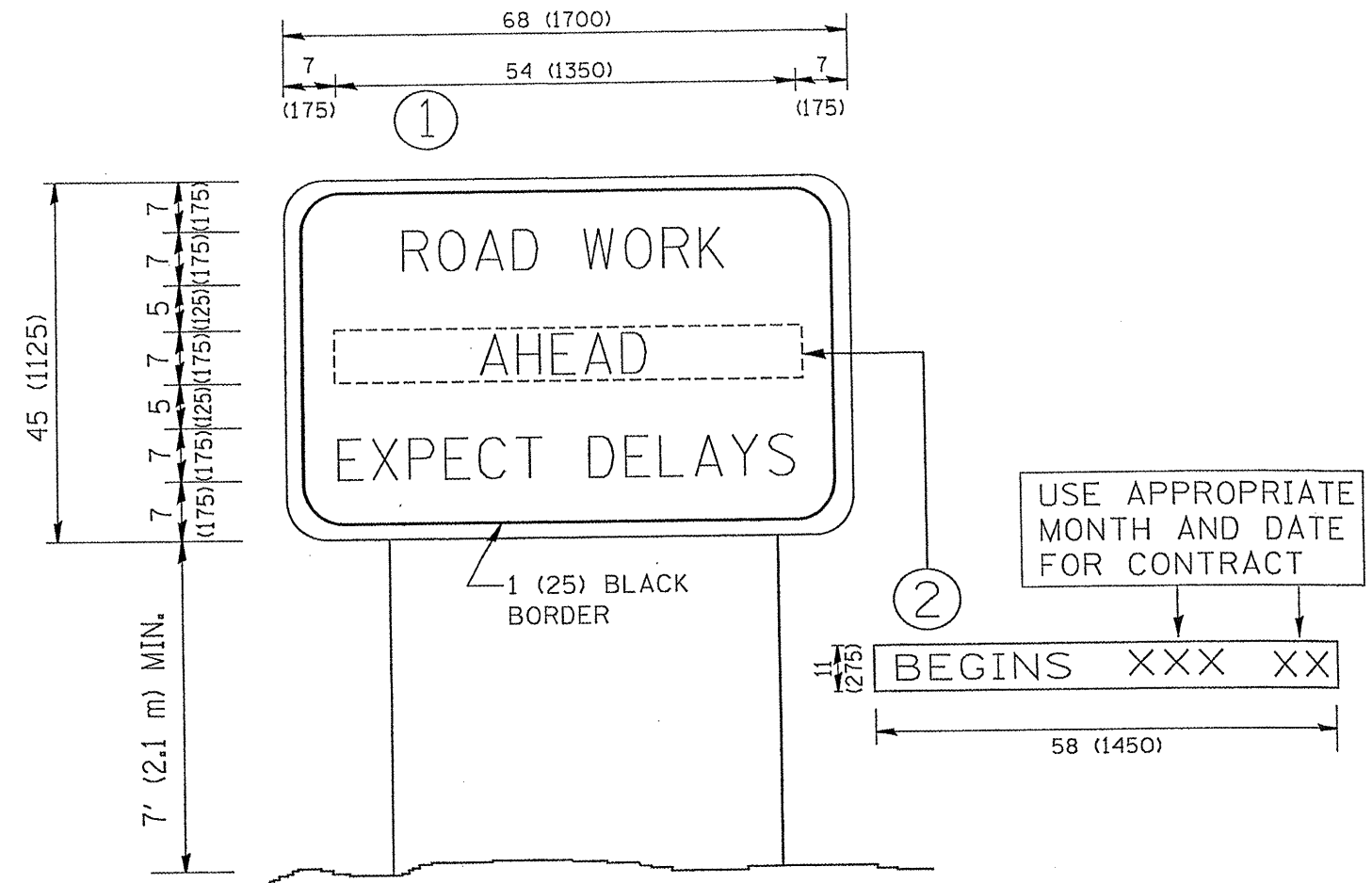
All dimensions are in inches (millimeters) unless otherwise shown.

FILE NAME =	USER NAME = drivakosgn	DESIGNED - EVERS	REVISED -T. RAMMACHER 10-27-94
3.dgn		DRAWN -	REVISED -C. JUCIUS 09-09-09
PLOT SCALE = 50.000' / IN.		CHECKED -	REVISED -
PLOT DATE = 9/9/2009		DATE - 03-19-90	REVISED -

STATE OF ILLINOIS
DEPARTMENT OF TRANSPORTATION

DISTRICT ONE			
TYPICAL PAVEMENT MARKINGS			
SCALE: NONE	SHEET NO. 1 OF 1 SHEETS	STA. TO STA.	

F.A.M. R'TE.	SECTION	COUNTY	TOTAL SHEETS	SHEET NO.
1321	0303 VB-1	COOK	21	20
TC-13		CONTRACT NO. 60480		
FED. ROAD DIST. NO. 1 ILLINOIS FED. AID PROJECT				



NOTES:

1. USE BLACK LETTERING ON ORANGE BACKGROUND.
2. ERECT SIGNS IN ADVANCE OF THE LOCATION FOR THE "ROAD CONSTRUCTION AHEAD" SIGN AT LOCATIONS AS DIRECTED BY THE ENGINEER.
3. ERECT SIGN ① WITH INSTALLED PANEL ② ONE WEEK PRIOR TO THE START OF CONSTRUCTION.
4. REMOVE PANEL ② SOON AFTER THE START OF CONSTRUCTION.
5. SEE SPECIAL PROVISION FOR "TEMPORARY INFORMATION SIGNING" FOR ADDITIONAL INFORMATION.
6. ONE SIGN ASSEMBLY EQUALS 25.70 SQ. FT. (2.3 SQ. M.)
7. SHALL BE PAID FOR AS TEMPORARY INFORMATION SIGNING.

ALL DIMENSIONS ARE IN INCHES (MILLIMETERS) UNLESS OTHERWISE SHOWN.

FILE NAME = W:\diststd\22x34\to22.dgn	USER NAME = gaglianobt	DESIGNED -	REVISED - R. MIRS 09-15-97	STATE OF ILLINOIS DEPARTMENT OF TRANSPORTATION	ARTERIAL ROAD INFORMATION SIGN	F.A.M. RTE. 1321	SECTION 0303 VB-I	COUNTY COOK	TOTAL SHEETS 21	SHEET NO. 21	
	PLOT SCALE = 50,000' / IN.	DRAWN -	REVISED - R. MIRS 12-11-97			TC-22	CONTRACT NO. 60480				
	PLOT DATE = 1/4/2008	CHECKED -	REVISED - T. RAMMACHER 02-02-99			FED. ROAD DIST. NO. 1		ILLINOIS		FED. AID PROJECT	
		DATE -	REVISED - C. JUCIUS 01-31-07			SCALE: NONE	SHEET NO. 1 OF 1 SHEETS	STA.	TO STA.		