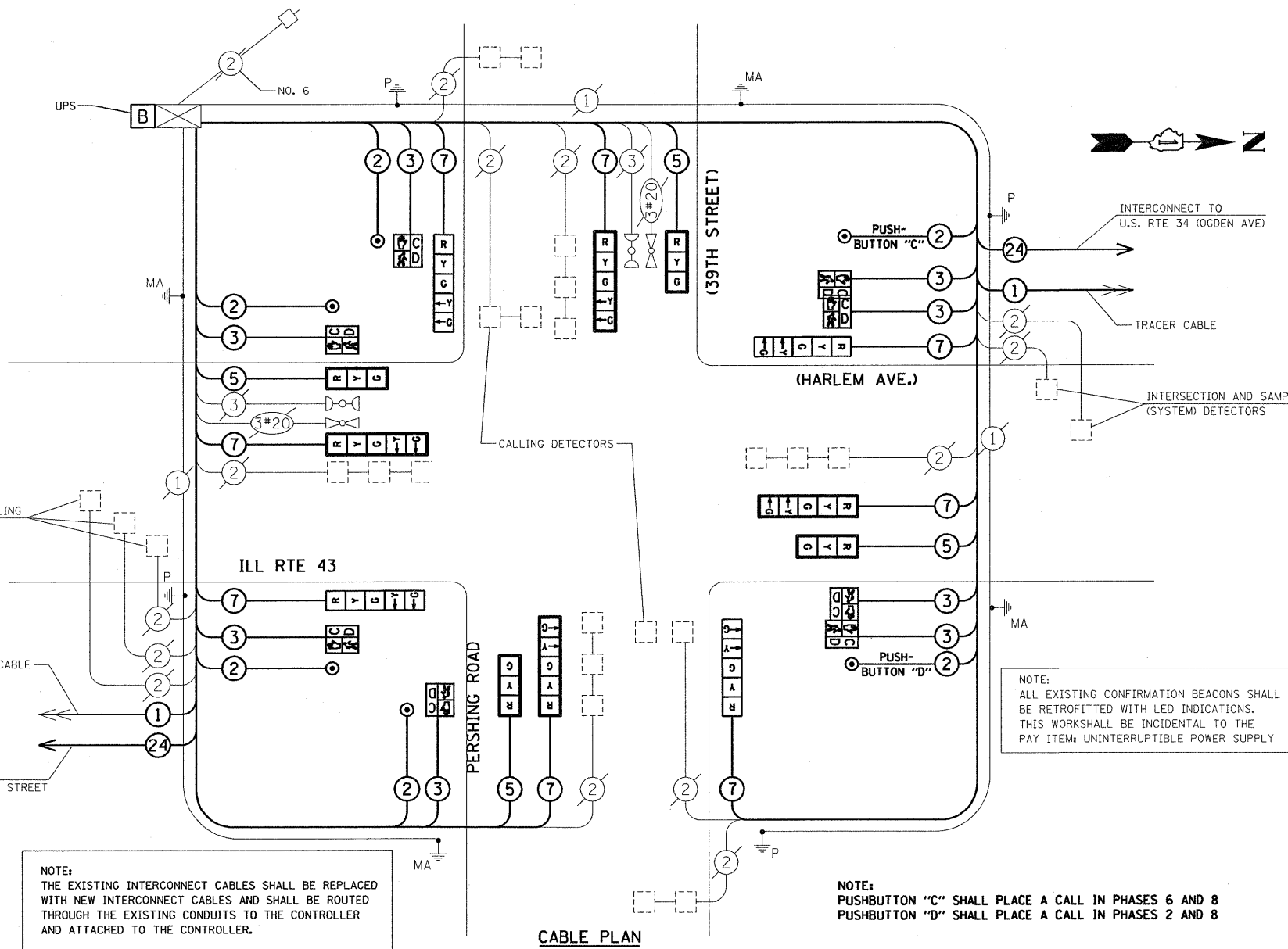
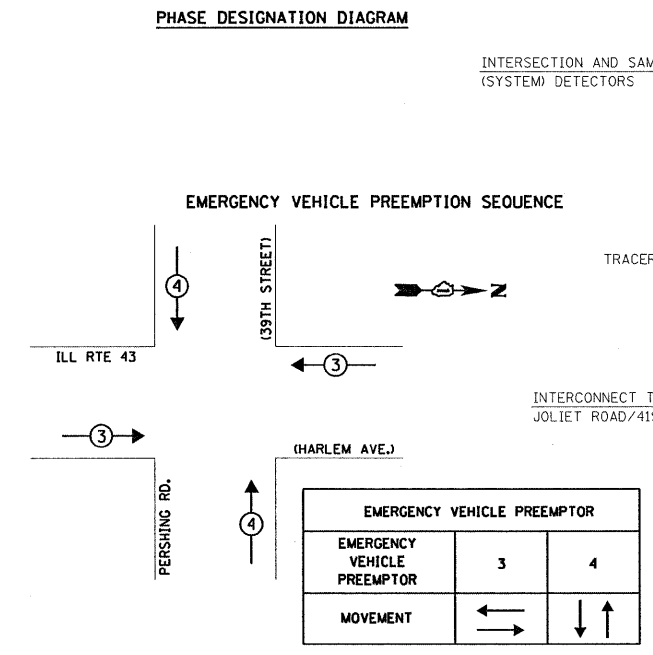
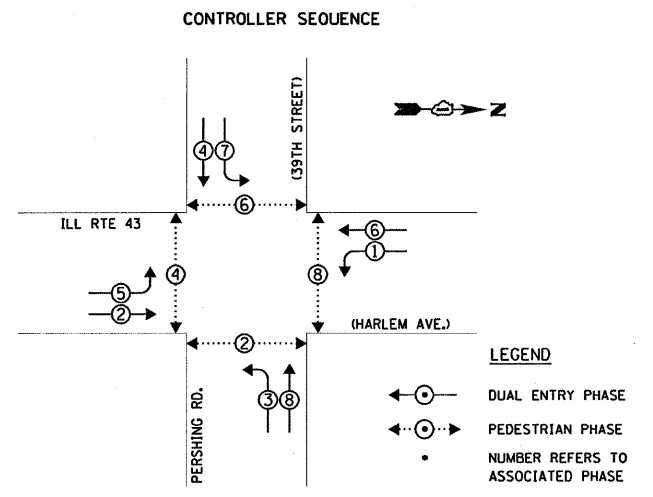


**CABLE PLAN LEGEND**

PROPOSED	EXISTING	DESCRIPTION
		8" (200mm) TRAFFIC SIGNAL SECTION
		12" (300mm) TRAFFIC SIGNAL SECTION
		12" (300mm) PEDESTRIAN SIGNAL SECTION
		12" (300mm) PEDESTRIAN SIGNAL SECTION
		CONTROLLER CABINET
		SERVICE INSTALLATION
		TELEPHONE CONNECTION
		MAGNETIC DETECTOR
		PUSHBUTTON DETECTOR
		VEHICLE DETECTOR, INDUCTION LOOP
		DENOTES NUMBER OF CONDUCTORS. ALL CABLE NO. 14 EXCEPT AS INDICATED. ALL LOOP DETECTOR CABLE TO BE SHIELDED.
		SIGNAL FACE WITH BACKPLATE. "P" INDICATES PROGRAMMED HEAD
		RAILROAD CONTROL CABINET
		ILLUMINATED SIGN, FIBER OPTIC "NO LEFT TURN"
		ILLUMINATED SIGN, FIBER OPTIC "NO RIGHT TURN"
		GROUND ROD AT HANDHOLE, DOUBLE HANDHOLE, OR CONTROLLER
		GROUND ROD AT POST OR MAST ARM POLE
		GROUND ROD AT ELECTRIC SERVICE INSTALLATION
		GROUND ROD IN CONDUIT NO. 6 SOLID COPPER (GREEN)
		FIBER OPTIC CABLE IN CONDUIT NO. 62.5/125 2-MM12F & SM12F
		MICROWAVE VEHICLE SENSOR
		VIDEO DETECTOR
		CLOSED CIRCUIT TV
		EMERGENCY VEHICLE LIGHT DETECTOR
		CONFIRMATION BEACON
		UNINTERRUPTIBLE POWER SUPPLY
		PEDESTRIAN SIGNAL HEAD WITH COUNTDOWN TIMER

NOTE: THE TRAFFIC SIGNAL CONTROLLER EQUIPMENT FOR THIS PROJECT SHALL BE "EAGLE" TO MATCH THE EXISTING ADJACENT SYSTEM.



NOTE: THE EXISTING INTERCONNECT CABLES SHALL BE REPLACED WITH NEW INTERCONNECT CABLES AND SHALL BE ROUTED THROUGH THE EXISTING CONDUITS TO THE CONTROLLER AND ATTACHED TO THE CONTROLLER.

NOTE: PUSHBUTTON "C" SHALL PLACE A CALL IN PHASES 6 AND 8. PUSHBUTTON "D" SHALL PLACE A CALL IN PHASES 2 AND 8.

**SCHEDULE OF INTERSECTION QUANTITIES**

QUANTITY	UNIT	ITEM	QUANTITY	UNIT	ITEM
400	SO FT	PORTLAND CEMENT CONCRETE SIDEWALK 5 INCH	4	EACH	TRAFFIC SIGNAL POST, GALVANIZED STEEL 16 FT.
400	SO. FT.	SIDEWALK REMOVAL	6	EACH	DRILL EXISTING HANDHOLE
162	SO FT	DETECTABLE WARNINGS	4	EACH	SIGNAL HEAD, L.E.D., 1-FACE, 3-SECTION, MAST ARM MOUNTED
81	FOOT	COMBINATION CURB AND GUTTER REMOVAL	4	EACH	SIGNAL HEAD, L.E.D., 1-FACE, 5-SECTION, BRACKET MOUNTED
81	FOOT	COMBINATION CONCRETE CURB AND GUTTER, TYPE B-6.24	4	EACH	SIGNAL HEAD, L.E.D., 1-FACE, 5-SECTION, MAST ARM MOUNTED
85	SO. FT.	BITUMINOUS CONCRETE REMOVAL	4	EACH	PEDESTRIAN SIGNAL HEAD, L.E.D., 1-FACE, BRACKET MOUNTED WITH COUNTDOWN TIMER
624	FOOT	THERMOPLASTIC PAVEMENT MARKING - LINE 6"	2	EACH	PEDESTRIAN SIGNAL HEAD, L.E.D., 2-FACE, BRACKET MOUNTED WITH COUNTDOWN TIMER
161	FOOT	THERMOPLASTIC PAVEMENT MARKING - LINE 24"	8	EACH	TRAFFIC SIGNAL BACKPLATE, LOUVERED, ALUMINUM
213	FOOT	CONDUIT PUSHED, 4" DIA., GALVANIZED STEEL	6	EACH	PEDESTRIAN PUSHBUTTON
91	FOOT	CONDUIT PUSHED, 3 1/2" DIA., GALVANIZED STEEL	1	EACH	MODIFY EXISTING CONTROLLER
1	EACH	HANDHOLE	2199	FOOT	ELECTRIC CABLE IN CONDUIT, SIGNAL NO. 14 2C
1	EACH	UNINTERRUPTIBLE POWER SUPPLY	1935	FOOT	ELECTRIC CABLE IN CONDUIT, SIGNAL NO. 14 3C
1	EACH	MAINTENANCE OF EXISTING TRAFFIC SIGNAL INSTALLATION	994	FOOT	ELECTRIC CABLE IN CONDUIT, SIGNAL NO. 14 5C
3393	FOOT	ELECTRIC CABLE IN CONDUIT, SIGNAL NO. 14 7C	1831	FOOT	ELECTRIC CABLE IN CONDUIT, SIGNAL NO. 14 7C

I.D.O.T. TRAFFIC SIGNAL INSTALLATION ELECTRICAL SERVICE REQUIREMENTS					TOTAL WATTAGE
TYPE	NO. LAMPS	WATTAGE INCAND.	LED	% OPERATION	
SIGNAL (RED)	12		17	0.50	102.00
(YELLOW)	12		25	0.25	75.00
(GREEN)	12		15	0.25	45.00
ARROW	16		12	0.10	19.20
PED. SIGNAL	8		25	1.00	200.00
CONTROLLER	1		100	1.00	100.00
ILLUM. SIGN	-		-	0.05	-
FLASHER	-		-	0.05	-
ENERGY COSTS TO: VILLAGE OF STICKNEY, 6533 PERSHING ROAD, STICKNEY, IL 60402					TOTAL = 541.20
ENERGY SUPPLY CONTACT: JUANITA VEIGELT, (815) 724-5657, COMMONWEALTH EDISON					

FOUNDATION (DEPTH)	FT. (m)	CABLE SLACK	FT. (m)	VERTICAL	FT. (m)
TYPE A - POST	4 (1.2)	HANDHOLE	6.5 (2.0)	ALL FOUNDATIONS	3.5 (1.0)
D - CONTROLLER	4 (1.2)	DOUBLE HANDHOLE	13 (4.0)	MAST ARM (L) POLE	20'+L-2=
E - M. ARM POLE	2 (0.6)	SIGNAL POST	2 (0.6)	(6m+L-0.6m)=	
24" (600mm)	10 (3.0)	CONTROLLER CAB.	1 (0.5)	BRACKET MOUNTED	13 (4.0)
30" (750mm)	15 (4.6)	FIBER OPTIC	13 (4.0)	PED. PUSHBUTTON	4 (1.2)
		ELECTRIC SERVICE	1 (0.5)	ELECTRIC SERVICE	13.5 (4.1)
		GROUND CABLE	1 (0.5)	SERVICE TO GROUND	13.5 (4.1)
				POST MOUNTED	6 (1.8)

**STATE OF ILLINOIS DEPARTMENT OF TRANSPORTATION**

SCHEDULE OF QUANTITIES, CABLE PLAN, PHASE DESIGNATION DIAGRAM AND EMERGENCY VEHICLE PREEMPTION SEQUENCE				F.A.P. RTE.	SECTION	COUNTY	TOTAL SHEETS	SHEET NO.
ILL RTE 43 (HARLEM AVE.) AT PERSHING ROAD				348	2009 078 TS	COOK	33	15
SCALE: NTS				SHEET NO. OF SHEETS STA. TO STA.		CONTRACT NO. 60115		
				FED. ROAD DIST. NO.		ILLINOIS		FED. AID PROJECT