

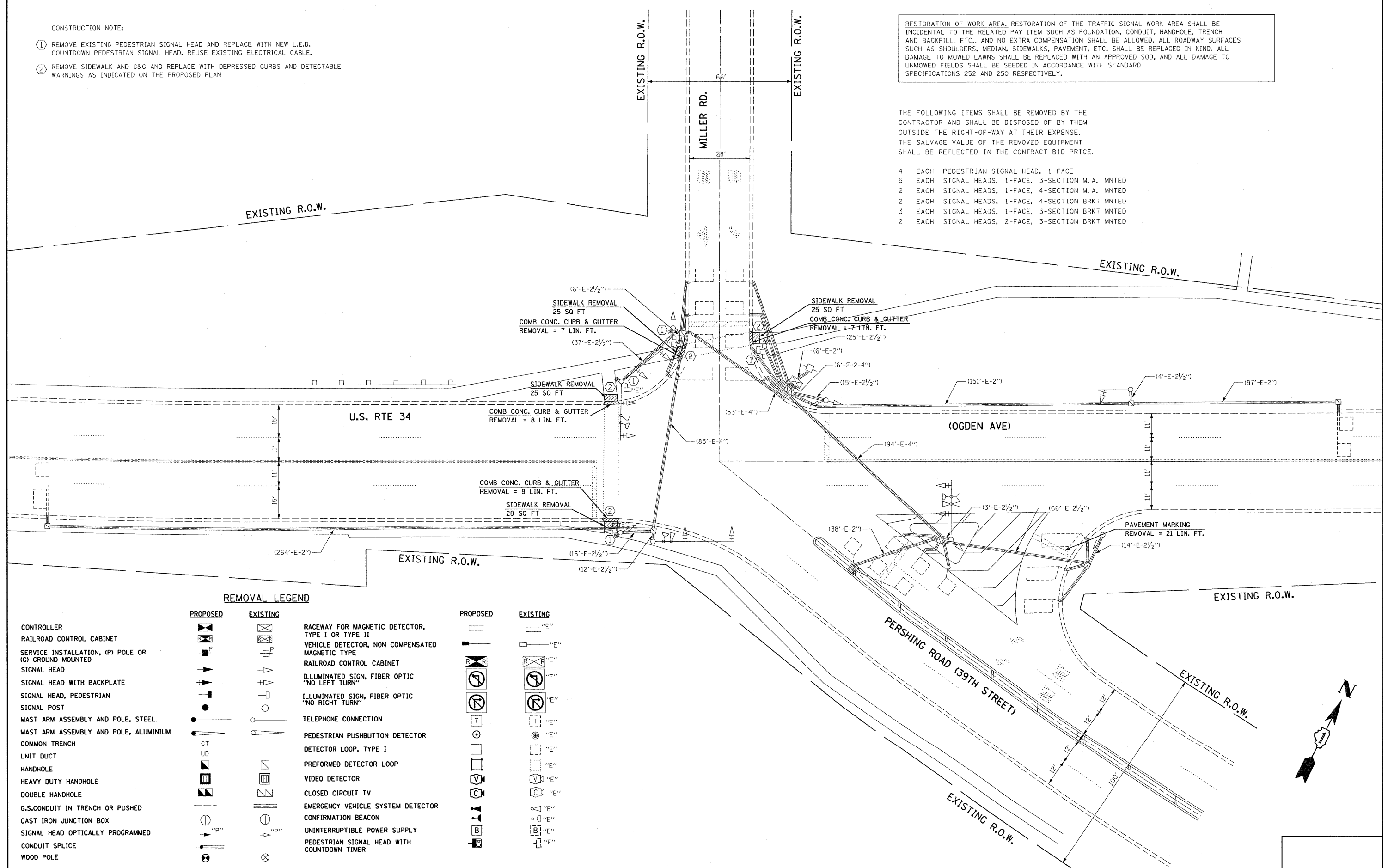
CONSTRUCTION NOTE:

- ① REMOVE EXISTING PEDESTRIAN SIGNAL HEAD AND REPLACE WITH NEW L.E.D. COUNTDOWN PEDESTRIAN SIGNAL HEAD. REUSE EXISTING ELECTRICAL CABLE.
- ② REMOVE SIDEWALK AND C&G AND REPLACE WITH DEPRESSED CURBS AND DETECTABLE WARNINGS AS INDICATED ON THE PROPOSED PLAN

RESTORATION OF WORK AREA. RESTORATION OF THE TRAFFIC SIGNAL WORK AREA SHALL BE INCIDENTAL TO THE RELATED PAY ITEM SUCH AS FOUNDATION, CONDUIT, HANDHOLE, TRENCH AND BACKFILL, ETC., AND NO EXTRA COMPENSATION SHALL BE ALLOWED. ALL ROADWAY SURFACES SUCH AS SHOULDERS, MEDIAN, SIDEWALKS, PAVEMENT, ETC. SHALL BE REPLACED IN KIND. ALL DAMAGE TO MOWED LAWNS SHALL BE REPLACED WITH AN APPROVED SOD, AND ALL DAMAGE TO UNMOWED FIELDS SHALL BE SEEDING IN ACCORDANCE WITH STANDARD SPECIFICATIONS 252 AND 250 RESPECTIVELY.

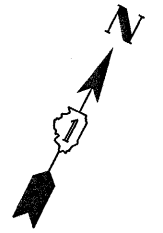
THE FOLLOWING ITEMS SHALL BE REMOVED BY THE CONTRACTOR AND SHALL BE DISPOSED OF BY THEM OUTSIDE THE RIGHT-OF-WAY AT THEIR EXPENSE. THE SALVAGE VALUE OF THE REMOVED EQUIPMENT SHALL BE REFLECTED IN THE CONTRACT BID PRICE.

- 4 EACH PEDESTRIAN SIGNAL HEAD, 1-FACE
- 5 EACH SIGNAL HEADS, 1-FACE, 3-SECTION M.A. MNTD
- 2 EACH SIGNAL HEADS, 1-FACE, 4-SECTION M.A. MNTD
- 2 EACH SIGNAL HEADS, 1-FACE, 4-SECTION BRKT MNTD
- 3 EACH SIGNAL HEADS, 1-FACE, 3-SECTION BRKT MNTD
- 2 EACH SIGNAL HEADS, 2-FACE, 3-SECTION BRKT MNTD



REMOVAL LEGEND

	PROPOSED	EXISTING		PROPOSED	EXISTING
CONTROLLER	[Symbol]	[Symbol]	RACEWAY FOR MAGNETIC DETECTOR, TYPE I OR TYPE II	[Symbol]	[Symbol]
RAILROAD CONTROL CABINET	[Symbol]	[Symbol]	VEHICLE DETECTOR, NON COMPENSATED MAGNETIC TYPE	[Symbol]	[Symbol]
SERVICE INSTALLATION, (P) POLE OR (G) GROUND MOUNTED	[Symbol]	[Symbol]	RAILROAD CONTROL CABINET	[Symbol]	[Symbol]
SIGNAL HEAD	[Symbol]	[Symbol]	ILLUMINATED SIGN, FIBER OPTIC "NO LEFT TURN"	[Symbol]	[Symbol]
SIGNAL HEAD WITH BACKPLATE	[Symbol]	[Symbol]	ILLUMINATED SIGN, FIBER OPTIC "NO RIGHT TURN"	[Symbol]	[Symbol]
SIGNAL HEAD, PEDESTRIAN	[Symbol]	[Symbol]	TELEPHONE CONNECTION	[Symbol]	[Symbol]
SIGNAL POST	[Symbol]	[Symbol]	PEDESTRIAN PUSHBUTTON DETECTOR	[Symbol]	[Symbol]
MAST ARM ASSEMBLY AND POLE, STEEL	[Symbol]	[Symbol]	DETECTOR LOOP, TYPE I	[Symbol]	[Symbol]
MAST ARM ASSEMBLY AND POLE, ALUMINIUM	[Symbol]	[Symbol]	PREFORMED DETECTOR LOOP	[Symbol]	[Symbol]
COMMON TRENCH	[Symbol]	[Symbol]	VIDEO DETECTOR	[Symbol]	[Symbol]
UNIT DUCT	[Symbol]	[Symbol]	CLOSED CIRCUIT TV	[Symbol]	[Symbol]
HANDHOLE	[Symbol]	[Symbol]	EMERGENCY VEHICLE SYSTEM DETECTOR	[Symbol]	[Symbol]
HEAVY DUTY HANDHOLE	[Symbol]	[Symbol]	CONFIRMATION BEACON	[Symbol]	[Symbol]
DOUBLE HANDHOLE	[Symbol]	[Symbol]	UNINTERRUPTIBLE POWER SUPPLY	[Symbol]	[Symbol]
G.S.CONDUIT IN TRENCH OR PUSHED	[Symbol]	[Symbol]	PEDESTRIAN SIGNAL HEAD WITH COUNTDOWN TIMER	[Symbol]	[Symbol]
CAST IRON JUNCTION BOX	[Symbol]	[Symbol]			
SIGNAL HEAD OPTICALLY PROGRAMMED	[Symbol]	[Symbol]			
CONDUIT SPLICE	[Symbol]	[Symbol]			
WOOD POLE	[Symbol]	[Symbol]			



10:36:40 11/09/2009

FILE NAME =	USER NAME = kenthaphixaybc	DESIGNED - TCM/BPR	REVISED - 09/08/2009 PER IDOT	STATE OF ILLINOIS DEPARTMENT OF TRANSPORTATION	TEMPORARY TRAFFIC SIGNAL INSTALLATION & REMOVE EXISTING TRAFFIC SIGNAL EQUIPMENT PLAN U.S. RTE 34 (OGDEN AVE.) AT PERSHING ROAD (39TH STREET)/MILLER ROAD			F.A.P. RTE. 348	SECTION 2009 078 TS	COUNTY COOK	TOTAL SHEETS 33	SHEET NO. 20
CONTRACT NO. 60115	SCALE: 1"=20'		SHEET NO. OF SHEETS STA. TO STA.		FED. ROAD DIST. NO. ILLINOIS	FED. AID PROJECT						