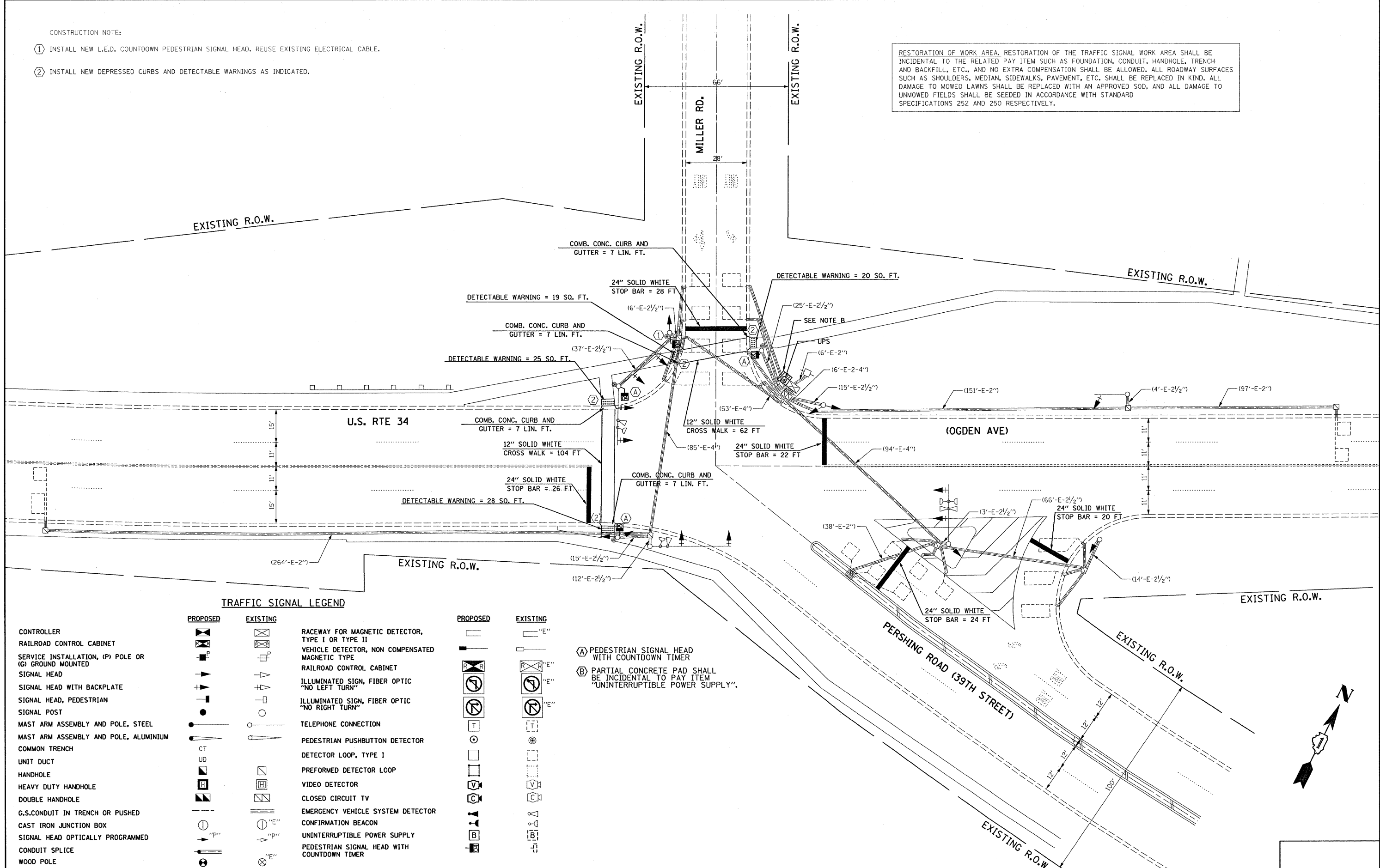


CONSTRUCTION NOTE:

- ① INSTALL NEW L.E.D. COUNTDOWN PEDESTRIAN SIGNAL HEAD, REUSE EXISTING ELECTRICAL CABLE.
- ② INSTALL NEW DEPRESSED CURBS AND DETECTABLE WARNINGS AS INDICATED.

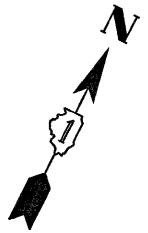
RESTORATION OF WORK AREA, RESTORATION OF THE TRAFFIC SIGNAL WORK AREA SHALL BE INCIDENTAL TO THE RELATED PAY ITEM SUCH AS FOUNDATION, CONDUIT, HANDHOLE, TRENCH AND BACKFILL, ETC., AND NO EXTRA COMPENSATION SHALL BE ALLOWED. ALL ROADWAY SURFACES SUCH AS SHOULDERS, MEDIAN, SIDEWALKS, PAVEMENT, ETC. SHALL BE REPLACED IN KIND. ALL DAMAGE TO MOWED LAWNS SHALL BE REPLACED WITH AN APPROVED SOD, AND ALL DAMAGE TO UNMOWED FIELDS SHALL BE SEEDED IN ACCORDANCE WITH STANDARD SPECIFICATIONS 252 AND 250 RESPECTIVELY.



TRAFFIC SIGNAL LEGEND

PROPOSED	EXISTING	PROPOSED	EXISTING
CONTROLLER	[Symbol]	RACEWAY FOR MAGNETIC DETECTOR, TYPE I OR TYPE II	[Symbol]
RAILROAD CONTROL CABINET	[Symbol]	VEHICLE DETECTOR, NON COMPENSATED MAGNETIC TYPE	[Symbol]
SERVICE INSTALLATION, (P) POLE OR (G) GROUND MOUNTED	[Symbol]	RAILROAD CONTROL CABINET	[Symbol]
SIGNAL HEAD	[Symbol]	ILLUMINATED SIGN, FIBER OPTIC "NO LEFT TURN"	[Symbol]
SIGNAL HEAD WITH BACKPLATE	[Symbol]	ILLUMINATED SIGN, FIBER OPTIC "NO RIGHT TURN"	[Symbol]
SIGNAL HEAD, PEDESTRIAN	[Symbol]	TELEPHONE CONNECTION	[Symbol]
SIGNAL POST	[Symbol]	PEDESTRIAN PUSHBUTTON DETECTOR	[Symbol]
MAST ARM ASSEMBLY AND POLE, STEEL	[Symbol]	DETECTOR LOOP, TYPE I	[Symbol]
MAST ARM ASSEMBLY AND POLE, ALUMINIUM	[Symbol]	PREFORMED DETECTOR LOOP	[Symbol]
COMMON TRENCH	[Symbol]	VIDEO DETECTOR	[Symbol]
UNIT DUCT	[Symbol]	CLOSED CIRCUIT TV	[Symbol]
HANDHOLE	[Symbol]	EMERGENCY VEHICLE SYSTEM DETECTOR	[Symbol]
HEAVY DUTY HANDHOLE	[Symbol]	CONFIRMATION BEACON	[Symbol]
DOUBLE HANDHOLE	[Symbol]	UNINTERRUPTIBLE POWER SUPPLY	[Symbol]
G.S.CONDUIT IN TRENCH OR PUSHED	[Symbol]	PEDESTRIAN SIGNAL HEAD WITH COUNTDOWN TIMER	[Symbol]
CAST IRON JUNCTION BOX	[Symbol]		
SIGNAL HEAD OPTICALLY PROGRAMMED	[Symbol]		
CONDUIT SPLICE	[Symbol]		
WOOD POLE	[Symbol]		

- (A) PEDESTRIAN SIGNAL HEAD WITH COUNTDOWN TIMER
- (B) PARTIAL CONCRETE PAD SHALL BE INCIDENTAL TO PAY ITEM "UNINTERRUPTIBLE POWER SUPPLY".



06:50:54 11/06/2009

FILE NAME =	USER NAME = konthapixaybc	DESIGNED - TCM/BPR	REVISED - 09/08/2009 PER IDOT	<b>STATE OF ILLINOIS DEPARTMENT OF TRANSPORTATION</b>	<b>PROPOSED TRAFFIC SIGNAL INSTALLATION PLAN</b>			F.A.P. RTE. 348	SECTION 2009 078 TS	COUNTY COOK	TOTAL SHEETS 33	SHEET NO. 22
CONTRACT NO. 60115	DRAWN - TCM/BPR		REVISED -		SCALE: 1"=20'	SHEET NO. OF SHEETS	STA. TO STA.	FED. ROAD DIST. NO.	ILLINOIS	FED. AID PROJECT		
	CHECKED - TCM		REVISED -									
	DATE - 07/02/2009		REVISED -									